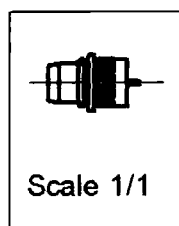
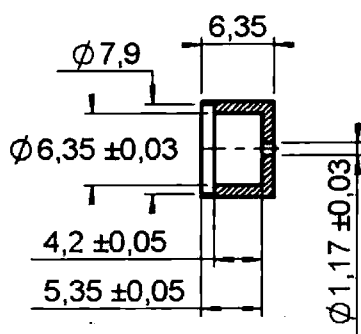
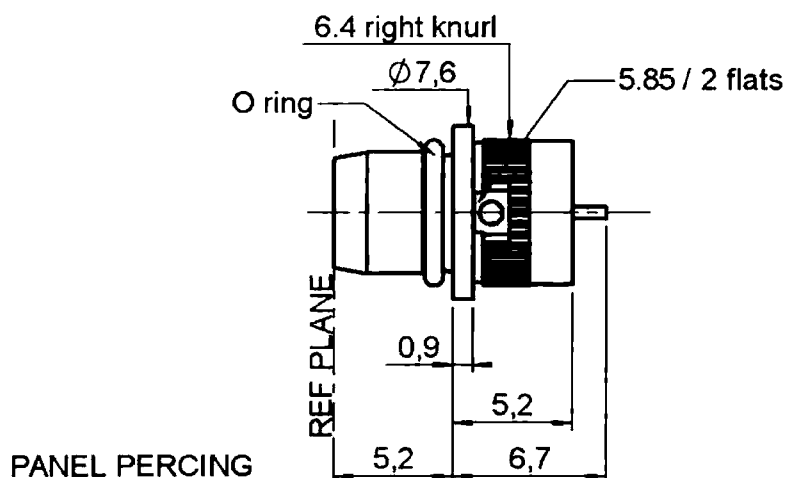


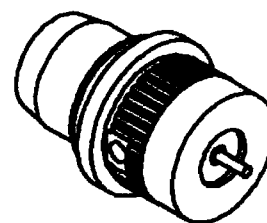
**PRESS FIT PLUG RECEPTACLE
WITH CYLINDRICAL CONTACT**

R128.595.001

Series : **BMA**



Scale 1/1



All dimensions are in mm.

| COMPONENTS | MATERIALS | PLATING |
|----------------|-----------------|--------------------------------------|
| BODY | STAINLESS STEEL | PASSIVATED . μm |
| CENTRE CONTACT | BRASS | GOLD 1.3 OVER NICKEL 2 μm |
| OUTER CONTACT | - | - μm |
| INSULATOR | PTFE | - μm |
| GASKET | SILICONE RUBBER | - |
| OTHERS PARTS | - | - |
| - | - | - |
| - | - | - |



RADIALL®

dition : 9926 D

Design changes may be in order to improve the product.

PRESS FIT PLUG RECEPTACLE
WITH CYLINDRICAL CONTACT

R128.595.001

Series : BMA

ELECTRICAL CHARACTERISTICS

| | | |
|---------------------------------|---------|------------------------------|
| Impedance | | 50 Ω |
| Frequency | | 0-22 GHz |
| VSWR | 1.25* + | 0.000 x F(GHz) Maxi |
| Insertion loss | | 0.07 $\sqrt{F(GHz)}$ dB Maxi |
| RF leakage | - (| 90 - F(GHz)) dB mini |
| Voltage rating | | 500 Veff Maxi |
| Dielectric withstanding voltage | | 1500 Veff mini |
| Insulation resistance | | 5000 M Ω mini |

SPECIFICATION

ENVIRONMENTAL

| | |
|----------------------------|--------------|
| Operating temperature | -65/+125 °C |
| Hermetic seal | NA Atm.cm3/s |
| Leakage – pressurised only | NA Mpa |

OTHERS CHARACTERISTICS

Assembly instruction NA

Others :
 * de 0 -10 Ghz

MECHANICAL CHARACTERISTICS

| | |
|----------------------------|------------------|
| Centre contact retention | |
| Axial force – Mating end | 27 N mini |
| Axial force – Opposite end | 27 N mini |
| Torque | NA N.cm mini |
| Recommended torque | |
| Mating | NA N.cm |
| Panel nut | NA N.cm |
| Mating life | 1000 Cycles mini |
| Weight | 1.500 g |



RADIALL®

dition : 9926 D

Design changes may be in order to improve the product.

Mouser Electronics

Authorized Distributor

Click to View Pricing, Inventory, Delivery & Lifecycle Information:

Radial:

[R128595001](#)