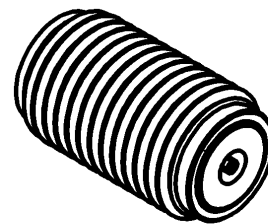
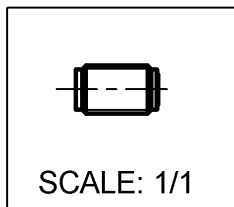
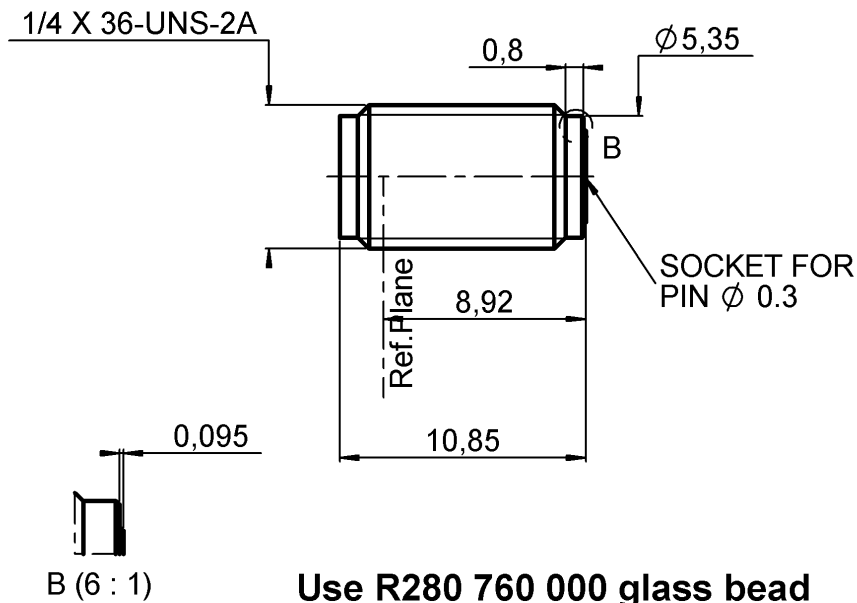


**UNIVERSAL SCREW RECEPTACLE
FOR 0.3 MM AXE**

R127.841.001

Series : SMA2.9



All dimensions are in mm.

COMPONENTS	MATERIALS	PLATINGS (µm)
BODY	STAINLESS STEEL	PASSIVATED .
CENTER CONTACT	BERYLLIUM COPPER	GOLD 1.3 OVER NICKEL 2
OUTER CONTACT	-	-
INSULATOR	ULTEM	-
GASKET	-	-
OTHERS PARTS	BRASS	GOLD 1.3 OVER NICKEL 2
-	-	-
-	-	-

Issue : 0625 A

In the effort to improve our products, we reserve the right to make changes judged to be necessary.



UNIVERSAL SCREW RECEPTACLE

R127.841.001

FOR 0.3 MM AXE

Series : SMA2.9

PACKAGING

SPECIFICATION

Standard	Unit	Other
1		Contact us

ELECTRICAL CHARACTERISTICS

ENVIRONMENTAL

Impedance	50	Ω
Frequency	0-40	GHz
VSWR	1.05 + 0,0050	x F(GHz) Maxi
Insertion loss	0.03	\sqrt{F} (GHz) dB Maxi
RF leakage	- (90)	- F(GHz) dB Maxi
Voltage rating	350	Veff Maxi
Dielectric withstanding voltage	750	Veff mini
Insulation resistance	5000	M Ω mini

Operating temperature	-65/+165	$^{\circ}$ C
Hermetic seal	NA	Atm.cm3/s
Panel leakage	NA	

OTHERS CHARACTERISTICS

Assembly instruction

Others :

MECHANICAL CHARACTERISTICS

Center contact retention		
Axial force – Mating end	27	N mini
Axial force – Opposite end	27	N mini
Torque	NA	N.cm mini
Recommended torque		
Mating	80-120	N.cm
Panel nut	190	N.cm
Mating life	500	Cycles mini
Weight	1,5600	g

Issue : 0625 A

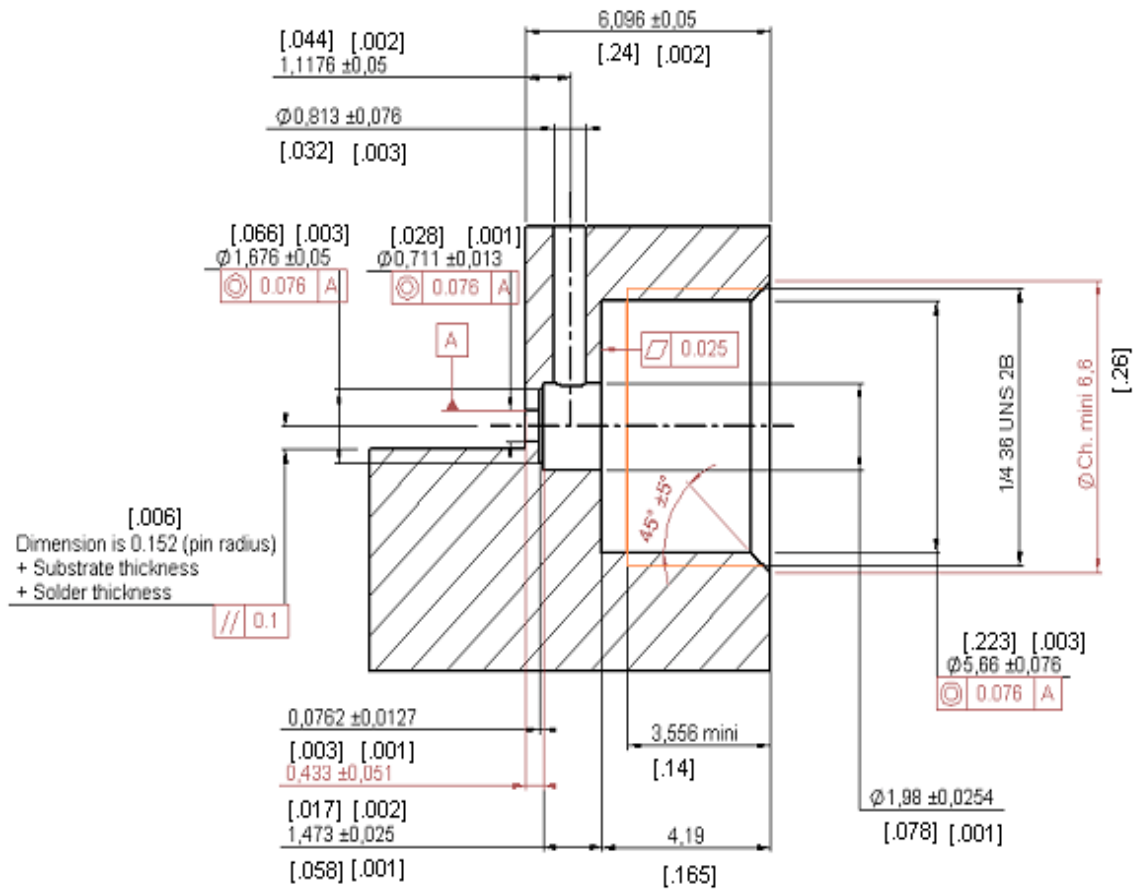
In the effort to improve our products, we reserve the right to make changes judged to be necessary.



UNIVERSAL SCREW RECEPTACLE
FOR 0.3 MM AXE

R127.841.001

Series : SMA2.9



To obtain correct concentricity and dimensions on the panel drilling,
 we recommend to use RADIALL special tools:
 R282.080.000 drilling tool
 and R282.082.000 screw tap

Issue : 0625 A

In the effort to improve our products, we reserve the right to make changes judged to be necessary.



UNIVERSAL SCREW RECEPTACLE

R127.841.001

FOR 0.3 MM AXE

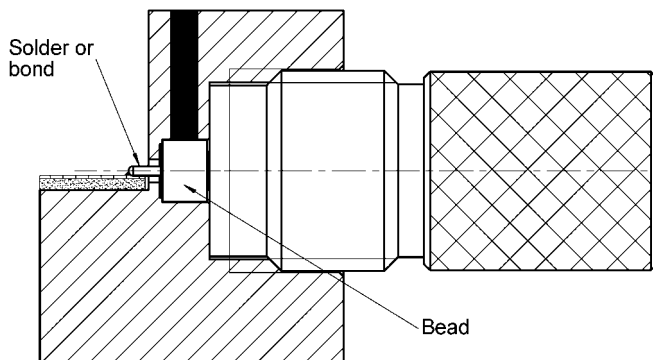
Series : SMA2.9

Soldering of the glass bead and mounting of the SMA 2.9 on the housing

1

SOLDERING of the glass bead

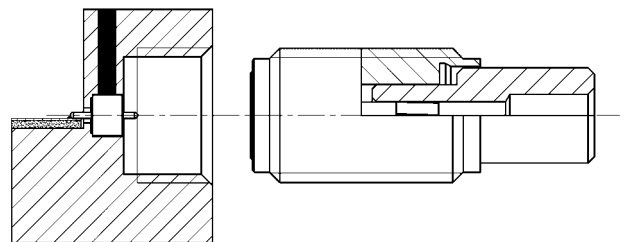
Set up of the R280.760.000 glass bead in the housing.
keep the glass Bead into position thanks to
R282.745.000 Positioneer



3

MOUNTING of the flange on the box

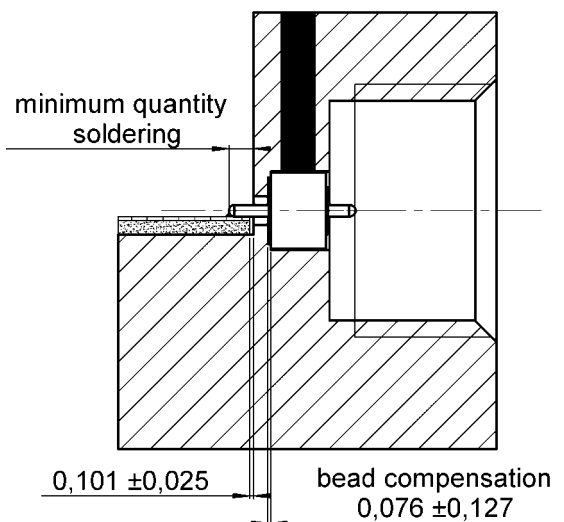
Set up the R282.860.000 position gauge on the flange to ensure a good concentricity.
Screw the assembly on the housing.



2

POSITION of the glass bead after soldering

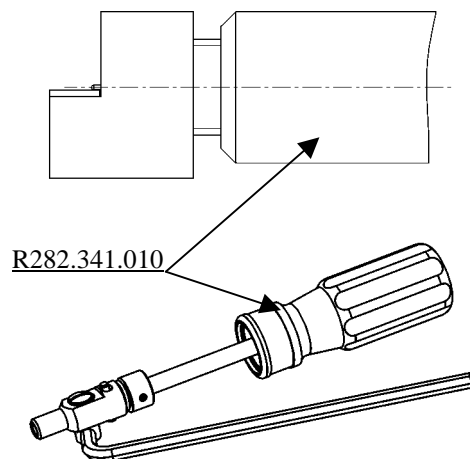
Check the soldering quality as well as the position of the glass bead in the housing.



4

Locking of the flange on the box

Lock the flange on the housing thanks to
R282.341.010 dynamometer screw-driver



Issue : 0625 A

In the effort to improve our products, we reserve the right to make changes judged to be necessary.



Mouser Electronics

Authorized Distributor

Click to View Pricing, Inventory, Delivery & Lifecycle Information:

[Radial:](#)

[R127841001](#)