

recommended cut-out for snap-in fixing  
(edge opposite to snap-in direction)

wall thickness

length of cut-out

width of cut-out

0.75 to 1.25

30 -0.1

22+0.2

1.25 to 2

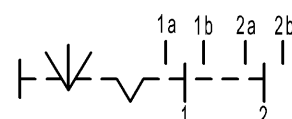
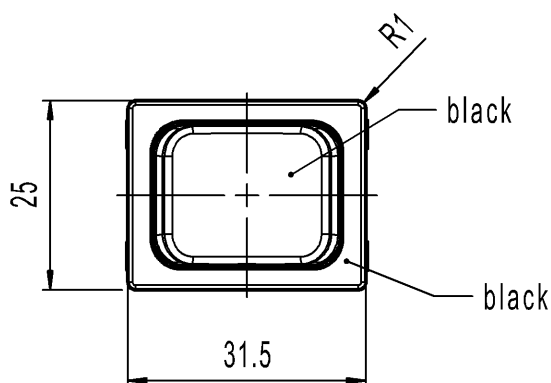
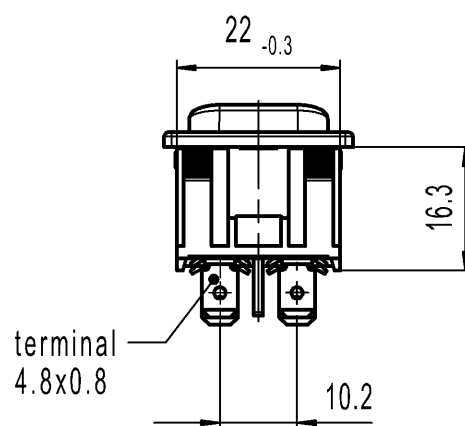
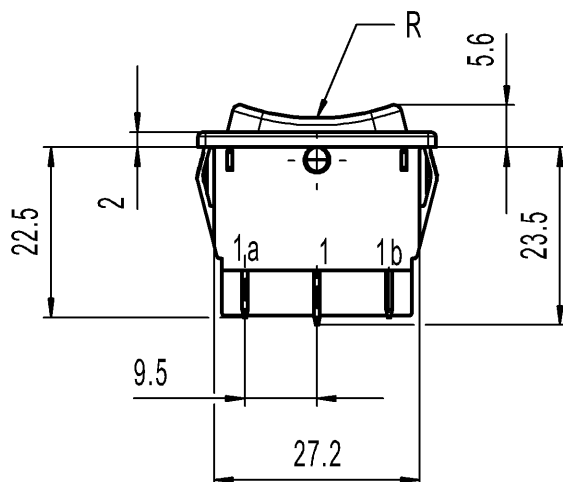
30.2 -0.1

22+0.2

2 to 3

30.6 -0.1

22+0.2



DPDT  
With centre-off  
Suitable for appliances of class II

Marking



1839.

6(4)/250~T105/55

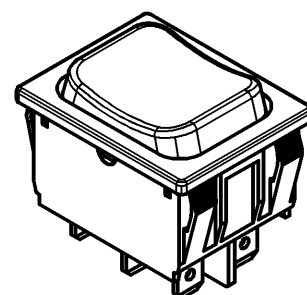


6A 125-250V AC

1/8 HP

R58

Code of manufacture: place/year/week



-		-				-		1839.1502-XX				
Figure		Type				Customer Part No.		Art.No.-PI				
<div>Shape and location</div> <div></div>		<div>Angle ± 2 °</div> <div>Edge tolerance</div> <div></div>		Length		Radii		Sheet 01		Ident.  K	Document number  18391502	Index  h
				0-6	± 0.2		±		± 0.2			
				>6-15	± 0.4		±		±			
				>15-30	± 0.4		±		±			
				>30-70	± 0.6		±		±			
					±		±		±			
					±		±		±			
					±		±		±			
					±		±		±			
												All dimensions are in millimetres
h	141196	2022-09-28		MOHITEN								
g	64508	2009-08-20		HHE		System NX V1899						
f	29987	2000-08-08		GRH								
e	24370	1996-11-25		GRH		Replacement of						
Index	MEC-No.	Date (YYYY-MM-DD)		Edited by		Zg.gl.Nr.v.25.11.1996						

# Mouser Electronics

Authorized Distributor

Click to View Pricing, Inventory, Delivery & Lifecycle Information:

[Marquardt:](#)

[01839.1502-01](#)