

**222CB 1-1/4B1-1/4BVLC**

## 222CB Series Industrial Solenoid Valves

The 222CB is a 2-way normally closed valve for air, water, and steam applications.

### Features

- Forged brass body with large wrench flats
- Repair kits available

### Specifications

Seat material.....	Rulon
Watts.....	12 @ 60Hz
VA inrush.....	38
VA holding.....	19
Maximum working pressure.....	300 psi (21 bar)
Minimum operating pressure.....	5 psi (0.34 bar)
UL/CUL file number.....	MP604

### 222CB Series Industrial Solenoid Valves

Description	Port size (in)	Conn. size	Mopd <sup>2</sup> ac	Cv	Max. Ac fluid temp. <sup>1</sup>	Elastomer	Suggested coil	Model number	Item number
Brass General Purpose	1/2	1/2"	250	3.5	180°F	BUNA-N	AMG	222CB 1/2B1/2BVLC	039917
	3/4	3/4"	250	7.0	180°F	BUNA-N	AMG	222CB 3/4B3/4BVLC	028192
	1	1"	250	13.0	180°F	BUNA-N	AMG	222CB 1B1BVLC	039931
	1-1/4	1-1/4"	250	16.0	180°F	BUNA-N	AMG	222CB 1-1/4B1-1/4BVLC	039918
	1-1/2	1-1/2"	250	25.0	180°F	BUNA-N	AMG	222CB 1-1/2B1-1/2BVLC	038879
Brass Steam	1/2	1/2"	150	3.5	400°F	Rulon with Ethylene Propylene Gaskets	AHG	222CB 1/2B1/2TVLC	037958
	3/4	3/4"	150	7.0	400°F	Rulon with Ethylene Propylene Gaskets	AHG	222CB 3/4B3/4TVLC	039930
	1	1"	250	13.0	180°F	BUNA-N	AHG	222CB 1B1TVLC	039834
	1-1/4	1-1/4"	150	16.0	400°F	Rulon with Ethylene Propylene Gaskets	AHG	222CB 1-1/4B1-1/4TVLC	040532
	1-1/2	1-1/2"	150	25.0	400°F	Rulon with Ethylene Propylene Gaskets	AHG	222CB 1-1/2B1-1/2TVLC	040582

<sup>1</sup> With an ambient temperature of 77°F

<sup>2</sup> Maximum Operating Pressure Differential  
VLC - See coil assemblies for availability

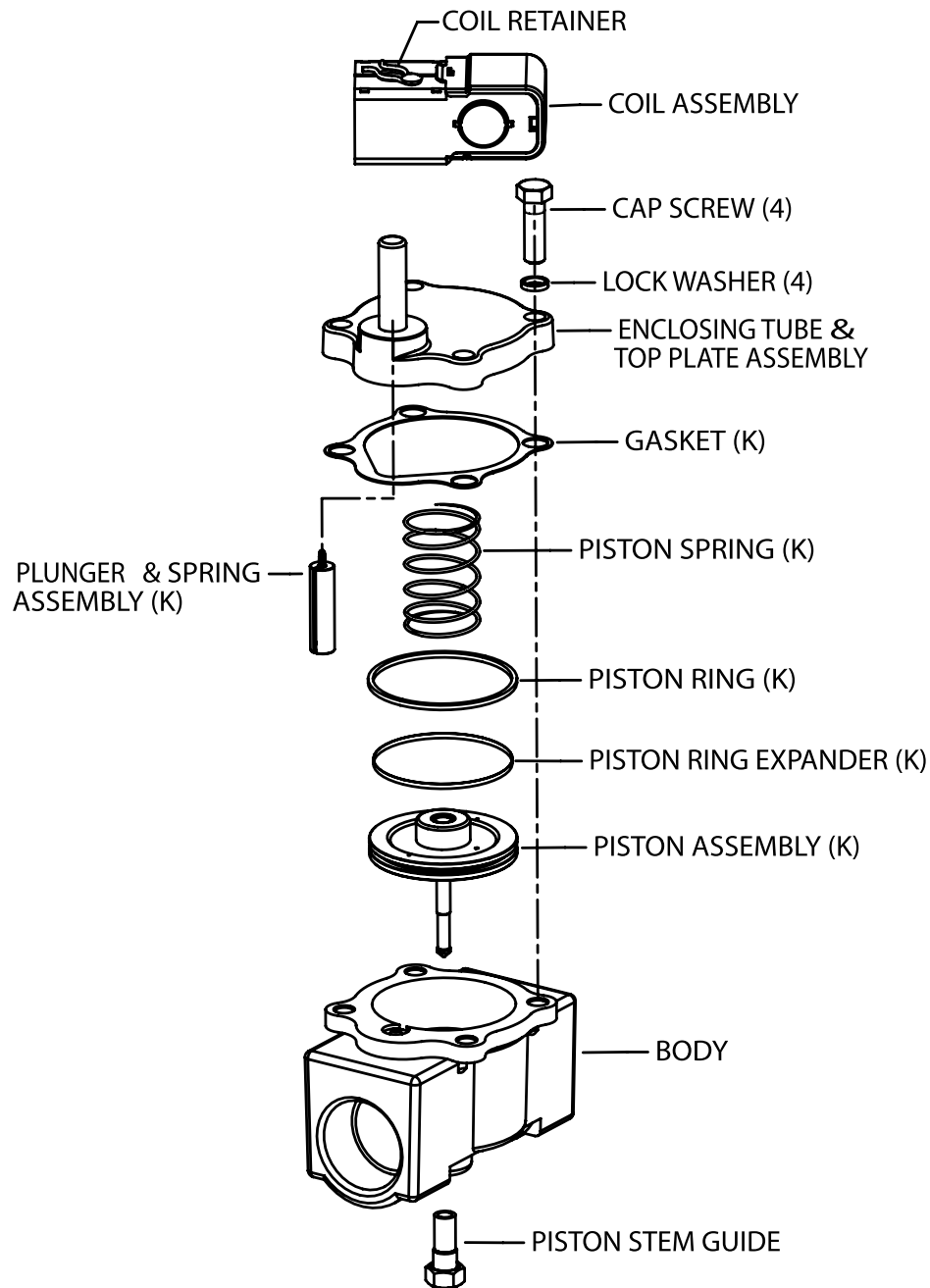
Exploded view & parts kit data

222CB complete valve repair kits

Seat material	Body size									
	3/8" & 1/2"		3/4"		1"		1-1/4"		1-1/2"	
	Model number	Item number	Model number	Item number	Model number	Item number	Model number	Item number	Model number	Item number
Buna-N	K-1116	030765	K-1120	037558	K-1124	028955	K-1128	031349	K-1132	028956
Rulon	K-1118	029235	K-1122	021109	K-1126	034178	K-1130	034047		

Valve repair kit

(K) indicates part is supplied in valve repair kit.



# Mouser Electronics

Authorized Distributor

Click to View Pricing, Inventory, Delivery & Lifecycle Information:

[White-Rodgers:](#)

[222CB 3/4B3/4BVLC](#) [222CB 3/4B3/4TVLC](#) [222CB 1-1/4B1-1/4BVLC](#) [222CB 1/2B1/2BVLC](#) [222CB 1-1/4B1-1/4TVLC](#)  
[222CB 1B1BVLC](#) [222CB 1-1/2B1-1/2TVLC](#) [222CB 1B1TVLC](#) [222CB 1-1/2B1-1/2BVLC](#) [222CB 1/2B1/2TVLC](#)