



240RA 12T7VLC

# 240RA SERIES REFRIGERANT SOLENOID VALVES

The 240RA is a 2-way, normally closed diaphragm valve used for liquid, suction, and hot gas service.

**FEATURES**

- Single coil family fits all valve sizes
- Can be brazed into the line without disassembly
- PTFE diaphragm for high temperature applications
- Extended ends for easy installation (standard)
- Mounting stud models can be field converted to manual stem
- Field serviceable parts available

**SPECIFICATIONS**

Maximum Fluid Temperature..... 250°F (121°C)  
 Maximum Working Pressure..... 500 psig (35 bar)  
 Maximum Operating Pressure Differential ..... 300 psig (21 bar)  
 UL/CUL File Number ..... MP604  
 Canadian CRN ..... 0C21506.513467890YTN

**MODEL NUMBER NOMENCLATURE** - Example: 240RA 8T5MVLC

VALVE SERIES	DESIGN SERIES	PORT SIZE	CONNECTION TYPE	CONNECTION SIZE	VALVE CONFIGURATION	*COIL	SEQUENTIAL IDENTIFIER	CUSTOMER SPECIAL	PACK TYPE
240R	A	8	T	5	M	VLC			
Normally Closed Refrigerant Solenoid Valves	Diaphragm Design	In 1/16"	T = ODF Extended Ends	In 1/8"	M = Manual Opening Stem T = Mounting Stud  (Omit for Std. Valve)	VLC = Valve Less Coil  For Valves with Coil See Coil Nomenclature on Coil Catalog Page	Blank Thru -99	G = Customer Special  (Omit for Standard)	B1 = Bulk Pack  (Omit for Individual Pack)

\* Valves in catalog are shipped without solenoid coils (VLC = Valve Less Coil). See coil pages for coil selection and a complete list of voltage options.

**240RA SERIES REFRIGERANT SOLENOID VALVES**

VALVE CONFIGURATION	PORT SIZE (IN)	CONNECTION SIZE & TYPE	NOMINAL LIQUID CAPACITY - TONS (kW)						MODEL NUMBER	ITEM NUMBER						
			R-22	R-134a	R-404A / R-507	R-407C	R-448A / R-449A	R-450A / R-513A								
Standard Valve	1/2	5/8" ODF	15.6 (54.9)	12.1 (42.6)	10.3 (36.2)	14.8 (52.1)	15.7 (55.1)	10.8 (37.8)	240RA 8T5VLC	060374						
Standard Valve		7/8" ODF							240RA 8T7VLC	060375						
Standard Valve	9/16	5/8" ODF	23.3 (81.9)	18.0 (63.3)	15.3 (53.8)	22.1 (77.2)	23.4 (82.3)	16.1 (56.5)	240RA 9T5VLC	060376						
Standard Valve		7/8" ODF							240RA 9T7VLC	060377						
Standard Valve		1-1/8" ODF							30.5(107.3)	21.0 (74.0)	20.1 (70.7)	29.0 (102.0)	30.6 (107.7)	21.0 (74.0)	240RA 9T9VLC	060378
Standard Valve	3/4	7/8" ODF	34.9 (122.7)	27.1 (95.3)	23.0 (80.9)	33.2 (116.8)	29.0 (102.0)	24.1 (84.6)	240RA 12T7VLC	060379						
Standard Valve		1-1/8" ODF							240RA 12T9VLC	060380						
Standard Valve	1	1-1/8" ODF	58.0 (203.9)	45.0 (158.3)	38.3 (134.7)	55.2 (194.1)	58.2 (204.8)	40.0 (140.6)	240RA 16T9VLC	060381						
Standard Valve		1-3/8" ODF							240RA 16T11VLC	060382						
Standard Valve	1-1/4	1-5/8" ODF	95.4 (335.5)	70.9 (249.4)	65.7 (231.1)	90.8 (319.3)	95.8 (336.8)	65.8 (231.3)	240RA 20T13VLC	060384						
Standard Valve		2-1/8" ODF							240RA 20T17VLC	060385						
Mounting Stud	1/2	5/8" ODF	15.6 (54.9)	12.1 (42.6)	10.3 (36.2)	14.8 (52.1)	15.7 (55.1)	10.8 (37.8)	240RA 8T5TVLC	040846						
Mounting Stud		7/8" ODF							240RA 8T7TVLC	044860						
Mounting Stud	9/16	5/8" ODF	23.3 (81.9)	18.0 (63.3)	15.3 (53.8)	22.1 (77.2)	23.4 (82.3)	16.1 (56.5)	240RA 9T5TVLC	040848						
Mounting Stud		7/8" ODF							30.5(107.3)	21.0 (74.0)	20.1 (70.7)	29.0 (102.0)	30.6 (107.7)	21.0 (74.0)	240RA 9T7TVLC	043205
Mounting Stud		1-1/8" ODF							240RA 9T9TVLC	044861						

**240RA SERIES REFRIGERANT SOLENOID VALVES (CONTINUED)**

VALVE CONFIGURATION	PORT SIZE (IN)	CONNECTION SIZE & TYPE	NOMINAL LIQUID CAPACITY - TONS (kW)						MODEL NUMBER	ITEM NUMBER						
			R-22	R-134a	R-404A / R-507	R-407C	R-448A / R-449A	R-450A / R-513A								
Mounting Stud	3/4	7/8" ODF	34.9 (122.7)	27.1 (95.3)	23.0 (80.9)	33.2 (116.8)	29.0 (102.0)	24.1 (84.6)	240RA 12T7TVLC	040850						
Mounting Stud		1-1/8" ODF							240RA 12T9TVLC	043959						
Mounting Stud	1	1-1/8" ODF	58.0 (203.9)	45.0 (158.3)	38.3 (134.7)	55.2 (194.1)	58.2 (204.8)	40.0 (140.6)	240RA 16T9TVLC	042549						
Mounting Stud		1-3/8" ODF							240RA 16T11TVLC	044428						
Mounting Stud	1-1/4	1-3/8" ODF	95.4 (335.5)	70.9 (249.4)	65.7 (231.1)	90.8 (319.3)	95.8 (336.8)	65.8 (231.3)	240RA 20T11TVLC	047761						
Mounting Stud		1-5/8" ODF							240RA 20T13TVLC	047747						
Mounting Stud		2-1/8" ODF							240RA 20T17TVLC	054297						
Manual Stem	1/2	5/8" ODF	15.6 (54.9)	12.1 (42.6)	10.3 (36.2)	14.8 (52.1)	15.7 (55.1)	10.8 (37.8)	240RA 8T5MVLC	040845						
Manual Stem		7/8" ODF							240RA 8T7MVLC	045753						
Manual Stem	9/16	5/8" ODF	23.3 (81.9)	18.0 (63.3)	15.3 (53.8)	22.1 (77.2)	23.4 (82.3)	16.1 (56.5)	240RA 9T5MVLC	040847						
Manual Stem		7/8" ODF							30.5 (107.3)	21.0 (74.0)	20.1 (70.7)	29.0 (102.0)	30.6 (107.7)	21.0 (74.0)	240RA 9T7MVLC	043204
Manual Stem		1-1/8" ODF													240RA 9T9MVLC	045752
Manual Stem	3/4	7/8" ODF	34.9 (122.7)	27.1 (95.3)	23.0 (80.9)	33.2 (116.8)	29.0 (102.0)	24.1 (84.6)	240RA 12T7MVLC	040849						
Manual Stem		1-1/8" ODF							240RA 12T9MVLC	045549						
Manual Stem	1	1-1/8" ODF	58.0 (203.9)	45.0 (158.3)	38.3 (134.7)	55.2 (194.1)	58.2 (204.8)	40.0 (140.6)	240RA 16T9MVLC	042548						
Manual Stem		1-3/8" ODF							240RA 16T11MVLC	044788						
Manual Stem	1-1/4	1-3/8" ODF	95.4 (335.5)	70.9 (249.4)	65.7 (231.1)	90.8 (319.3)	95.8 (336.8)	65.8 (231.3)	240RA 20T11MVLC	046636						
Manual Stem		1-5/8" ODF							240RA 20T13MVLC	046637						
Manual Stem		2-1/8" ODF							240RA 20T17MVLC	046638						

Capacities based on 100°F liquid and 40°F saturated evaporator per ARI standard 760-87. All ratings are based on largest connection size.



Detailed product drawings

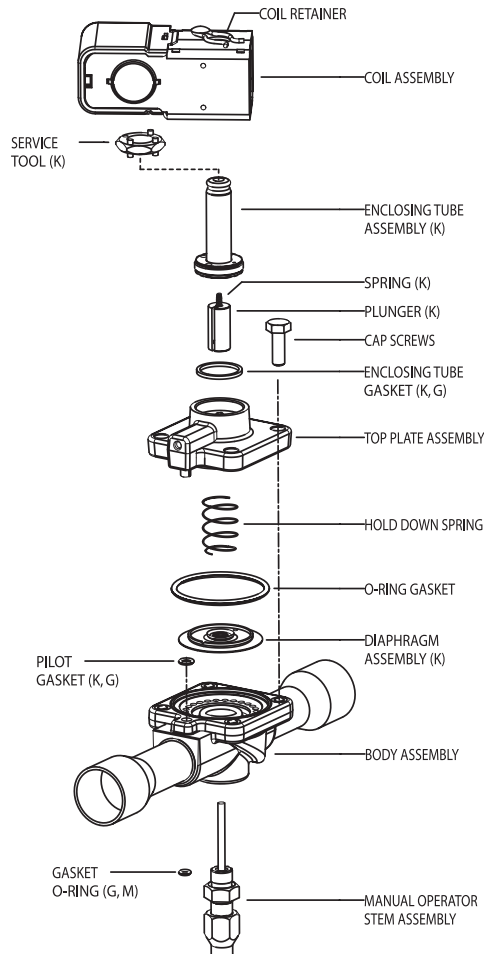
Extended capacity tables



**EXPLODED VIEW & PARTS KIT DATA**

**240RA SERIES PART KITS**

DESCRIPTION	MODEL NUMBER	ITEM NUMBER
<b>Complete Kits</b>		
200RA 8 Solenoid Valve Complete Kit (K)	KS-30321	060626
200RA 9 Solenoid Valve Complete Kit (K)	KS-30322	060627
240RA 12 Solenoid Valve Complete Kit (K)	KS-30323	060628
240RA 16 Solenoid Valve Complete Kit (K)	KS-30324	060629
240RA 20 Solenoid Valve Complete Kit (K)	KS-30325	060630
<b>Manual Opener Kits</b>		
240RA 8 Solenoid Valve Manual Opener Kit (M)	KS-30066	044657
240RA 9 and 240RA 12 Solenoid Valve Manual Opener Kit (M)	KS-30067	044658
240RA 16 Solenoid Valve Manual Opener Kit (M)	KS-30068	044491
240RA 20 Solenoid Valve Manual Opener Kit (M)	KS-30098	047723
<b>Gasket Kits</b>		
240RA and 540RA Gasket Kit (G)	KG-10028	054356
<b>Tool Kits</b>		
100RB, 240RA and 540RA Solenoid Valve Universal (2/3 hole) Spanner Wrench (Included in complete valve kit)	X-11981-1	027451
Magnetic Solenoid Tool opens a normally closed solenoid valve in the de-energized state, incorporates a spanner wrench for easy disassembly of solenoid valve series 100RB, 200RB, 240RA, and provides an orifice to manually adjust opening stem.	SOLENOID TOOL	066019



**VALVE REPAIR KIT**

(K) indicates part is supplied in valve repair kit.

**MANUAL STEM KIT**

(M) indicates part is supplied in manual stem kit

**GASKET KIT**

(G) indicates gasket is supplied in gasket kit.

# Mouser Electronics

Authorized Distributor

Click to View Pricing, Inventory, Delivery & Lifecycle Information:

[White-Rodgers:](#)

[KS-30068](#) [KS-30098](#) [KS-30066](#) [KS-30325](#) [KS-30323](#) [KS-30324](#) [KS-30067](#)