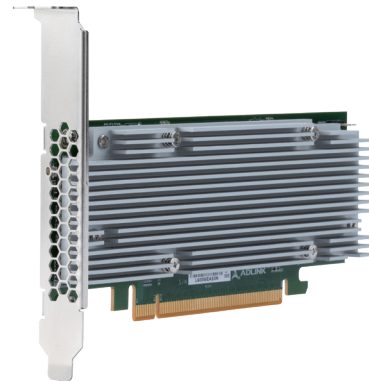


## FEC ACCELERATOR SERVER ADAPTER BASED ON INTEL® VRAN DEDICATED ACCELERATOR ACC100

# PCIe-ACC100

## Datasheet



### Features

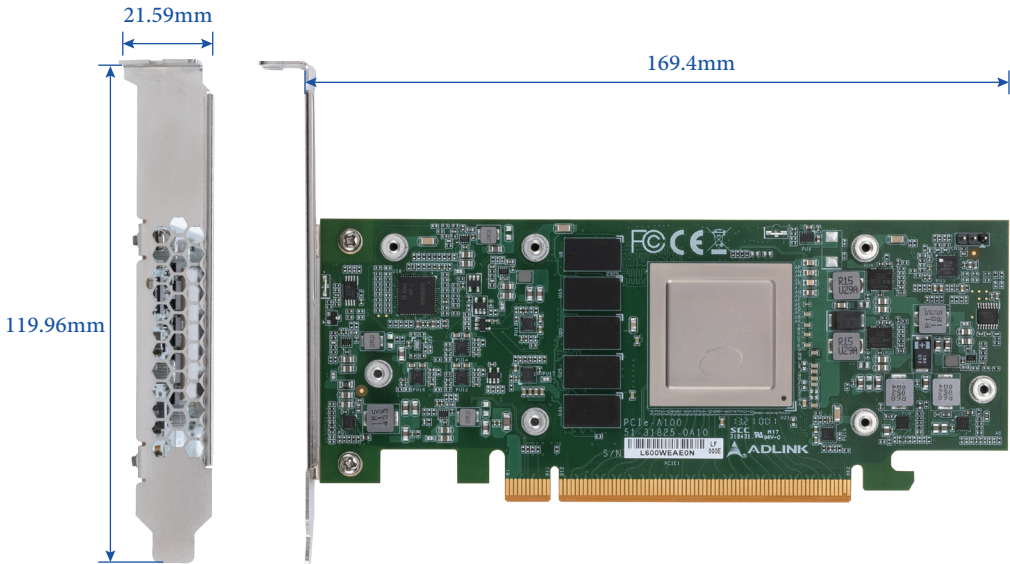
- Integrates Intel® vRAN Dedicated Accelerator ACC100 eASIC device (formerly Mount Bryce)  
LDPC FEC processing (3GPP 5G): LDPC encode/decode, CRC, rate matching, HARQ  
LTE FEC processing (3GPP 4G): Turbo encode/decode, CRC, rate matching  
Supports virtualization, scalable to desired system configuration; separate engines for UL/DL  
Load balancing supported by Queue Mgr.
- Low profile PCIe card for low-cost design  
Power envelope of low-profile slot  
For Intel® Xeon® Scalable Processor & Xeon® D Processor based COTS servers  
No PCIe card auxiliary power required  
No front-panel I/O for maximum air-flow Full and Half-height bracket options
- Onboard DDR4 for HARQ processing
- High-speed host interface: PCIe x16 Gen3
- Operating temperature: -5°C to +55°C
- Passive cooling
- NEBS compliance ready

### Specifications

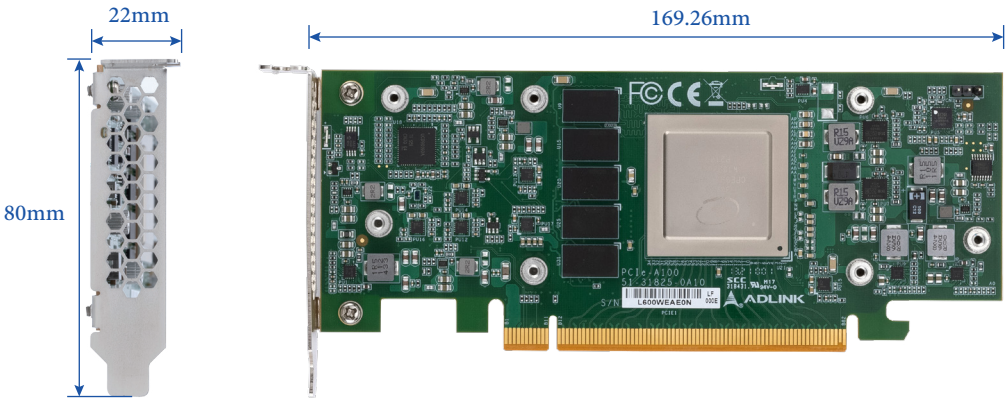
Dimensions	Half-Height Half-Length (HHHL) board Option 1: with full-height bracket: 169.4mm x 21.59mm x 119.96mm Option 2: with half-height bracket: 169.26mm x 22mm x 80mm
Performance	5G throughput: Encode = 21Gbps encode, 8Gbps decode 4G throughput: Encode = 8.4Gbps encode, 2.1Gbps decode
Software and Cloud Support	Interface via DPDK BBDev Cloud native, VM and bare metal, SRIOV/Vt-d
Interface	PCIe x16 Gen3 interface to host
Memory	DDR4-2666 4GB ECC
Operating Temperature	-5°C - +55°C

# Mechanical Overview

Option 1: Full-height bracket



Option 2: Half-height bracket



# Mouser Electronics

Authorized Distributor

Click to View Pricing, Inventory, Delivery & Lifecycle Information:

[ADLINK Technology:](#)

[91-31825-100E](#)