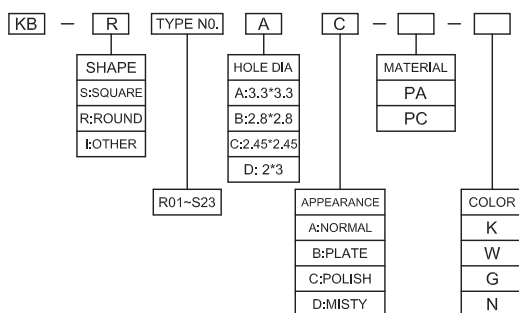
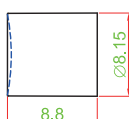




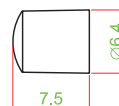
HOW TO ORDER



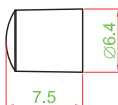
塑膠顏色編碼 (CAP COLOR)		
中文	ENGLISH	CODE
灰色	GRAY	G
綠色	GREEN	N
黑色	BLACK	K
紅色	RED	R
白色	WHITE	W
黃色	YELLOW	Y
透明	TRANSPARENT	T



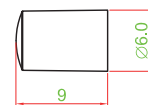
PART NUMBER	KB-R01AC-PA-□
COLOR OF KNOB	G, K, N, R, T
SERIES	A.M.ML.PT.T PS010.PS015.PS018



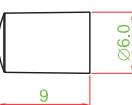
PART NUMBER	KB-R02AD-PA-□
COLOR OF KNOB	K
SERIES	A.M.ML.PT.T PS010.PS015.PS018



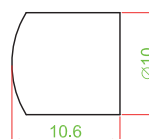
PART NUMBER	KB-R02BD-PA-□
COLOR OF KNOB	K
SERIES	MS.PD



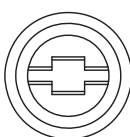
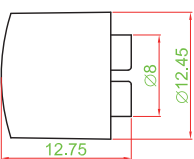
PART NUMBER	KB-R03BA-PA-□
COLOR OF KNOB	G, K, R
SERIES	MS.PD



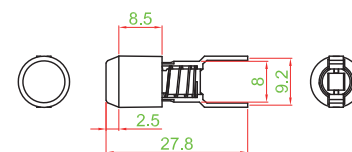
PART NUMBER	KB-R03DA-PA-□
COLOR OF KNOB	G, K, R
SERIES	ACTUATOR (2 x 3 mm)



PART NUMBER	KB-R05AC-PC-□
COLOR OF KNOB	K, T
SERIES	A.M.ML.PT.T PS010.PS015.PS018

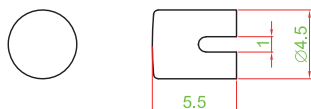


PART NUMBER	KB-R06AD-PA-□
COLOR OF KNOB	G, K, W
SERIES	A.M.ML.PT.T PS010.PS015.PS018



PART NUMBER	KB-R08AC-K-PC-Y
COLOR OF KNOB	B.G.N.O.R.W.Y
SERIES	T

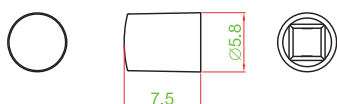




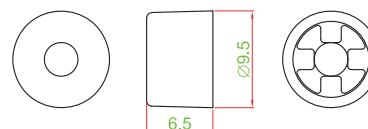
PART NUMBER	KB-R10CA-PA-□
COLOR OF KNOB	B, G, W, K, R
SERIES	KT



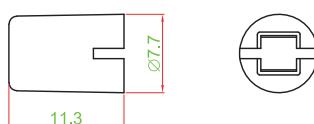
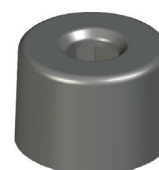
PART NUMBER	KB-R11AC-PA-□
COLOR OF KNOB	K, T
SERIES	A.M.ML.PT.T PS010.PS015.PS018



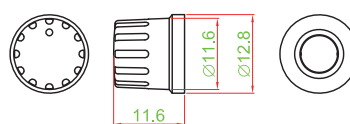
PART NUMBER	KB-R12BD-PA-□
COLOR OF KNOB	K, T
SERIES	PD.MS



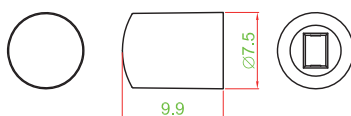
PART NUMBER	KB-R13AC-PA-□
COLOR OF KNOB	K, T
SERIES	ML



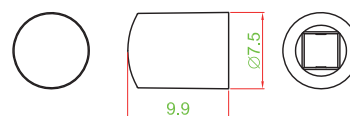
PART NUMBER	KB-R15AA-PA-□
COLOR OF KNOB	K, T, W
SERIES	A.M.ML.PT.T PS010.PS015.PS018



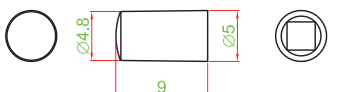
PART NUMBER	KB-R16AH-W-PA-□-2P
COLOR OF KNOB	K, G
SERIES	RS003



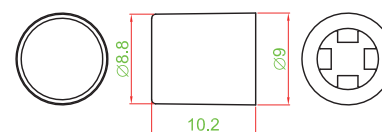
PART NUMBER	KB-R18DA-PA-□
COLOR OF KNOB	R, Y, N, B, W
SERIES	ACTUATOR (2 x 3 mm)



PART NUMBER	KB-R18A1A-PA-□
COLOR OF KNOB	R, Y, N, B, W
SERIES	A.M.ML.PT.T PS010.PS015.PS018



PART NUMBER	KB-R21BC-PA-□
COLOR OF KNOB	K, W
SERIES	MS.PD



PART NUMBER	KB-R22AC-PC-□
COLOR OF KNOB	G, K, W
SERIES	A.M.ML.PT.T PS010.PS015.PS018

TACT
SWITCHPUSH
BUTTON
SWITCHLED TOUCH
SENSOR
SWITCH5 DIRECTION
NAVIGATION
SWITCH
WITH LEDMEMBRANE
SWITCHLED LIGHT
BARSLIDE
SWITCHROTARY
SWITCHROCKER
SWITCHDETECT
SWITCH

ENCODER

INTERRUPTER

MINIATURE
MICRO
SWITCHTELEPHONE
HOOK
SWITCHDOOR
SWITCHMINI SIZE
SOCKET

KNOB

CAP
SYMBOL



TACT
SWITCH

PUSH
BUTTON
SWITCH

LED TOUCH
SENSOR
SWITCH

5 DIRECTION
NAVIGATION
SWITCH WITH LED

MEMBRANE
SWITCH

LED LIGHT
BAR

SLIDE
SWITCH

ROTARY
SWITCH

ROCKER
SWITCH

DETECT
SWITCH

ENCODER

INTERRUPTER

MINIATURE
MICRO
SWITCH

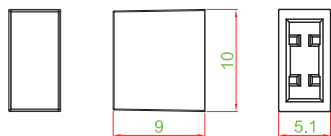
TELEPHONE
HOOK
SWITCH

DOOR
SWITCH

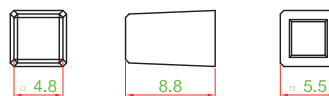
MINI SIZE
SOCKET

KNOB

CAP
SYMBOL



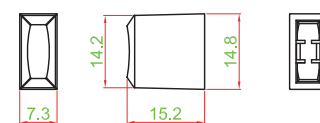
PART NUMBER	KB-S04BA-PA-□
COLOR OF KNOB	K , W
SERIES	MS.PD



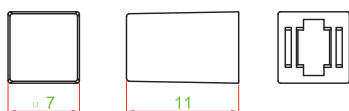
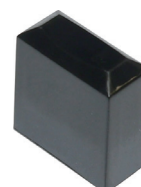
PART NUMBER	KB-S07AC-PA-□
COLOR OF KNOB	G , K , W
SERIES	A.M.ML.PT.T PS010.PS015.PS018



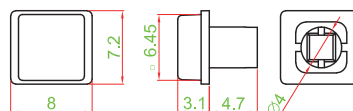
PART NUMBER	KB-S07BC-PA-□
COLOR OF KNOB	G , K , W
SERIES	PD , MS



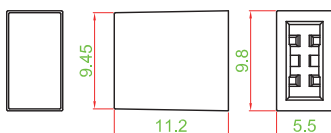
PART NUMBER	KB-S14AC-PA-□ KB-S14AD-PA-□
COLOR OF KNOB	G , K
SERIES	A.M.ML.PT.T PS010.PS015.PS018



PART NUMBER	KB-S19AC-PC-□
COLOR OF KNOB	G , K , W
SERIES	A.M.ML.PT.T PS010.PS015.PS018



PART NUMBER	KB-S20CD-PC-□
COLOR OF KNOB	G , K
SERIES	ACTUATOR (2.45 x 2.45mm)



PART NUMBER	KB-S23BD-PA-□
COLOR OF KNOB	G , K , W
SERIES	MS.PD



Mouser Electronics

Authorized Distributor

Click to View Pricing, Inventory, Delivery & Lifecycle Information:

[Well Buying:](#)

[KB-R11AC-PC-T](#)