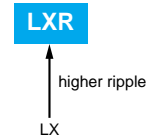


# LXR Series

- Higher ripple capability than LX series
- Endurance with ripple current : 105°C 5000 hours



## ◆ SPECIFICATIONS

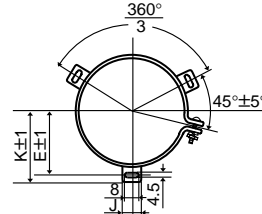
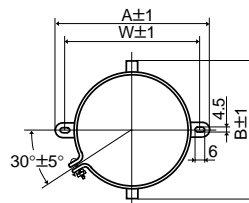
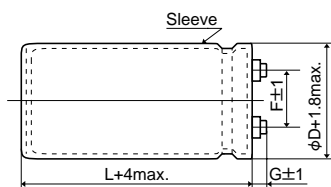
Items	Characteristics						
<b>Category</b>							
<b>Temperature Range</b>	-25 to +105°C						
<b>Rated Voltage Range</b>	350 to 450V <sub>dc</sub>						
<b>Capacitance Tolerance</b>	±20% (M) (at 20°C, 120Hz)						
<b>Leakage Current</b>	I=0.02CV or 5mA, whichever is smaller. Where, I : Max. leakage current (μA), C : Nominal capacitance (μF), V : Rated voltage (V) (at 20°C after 5 minutes)						
<b>Dissipation Factor (tanδ)</b>	0.15max. (at 20°C, 120Hz)						
<b>Low Temperature Characteristics</b>	Capacitance change $C(-25^{\circ}\text{C})/C(+20^{\circ}\text{C}) \geq 0.7$ (at 120Hz)						
<b>Insulation Resistance</b>	When measured between the terminals shorted each other and the mounting clamp on the insulating sleeve covering the case by using an insulation resistance meter of 500V <sub>dc</sub> , the insulation shall not be less than 100MΩ.						
<b>Insulation Withstanding Voltage</b>	When a voltage of 2000V <sub>ac</sub> is applied for 1 minute between the terminals shorted each other and the mounting clamp on the insulating sleeve covering the case, there shall not be electrical damage.						
<b>Endurance</b>	The following specifications shall be satisfied when the capacitors are restored to 20°C after subjected to DC voltage with the rated ripple current is applied for 5000 hours at 105°C. <table border="1"> <tr> <td>Capacitance change</td> <td>≤±20% of the initial value</td> </tr> <tr> <td>D.F. (tanδ)</td> <td>≤200% of the initial specified value</td> </tr> <tr> <td>Leakage current</td> <td>≤The initial specified value</td> </tr> </table>	Capacitance change	≤±20% of the initial value	D.F. (tanδ)	≤200% of the initial specified value	Leakage current	≤The initial specified value
Capacitance change	≤±20% of the initial value						
D.F. (tanδ)	≤200% of the initial specified value						
Leakage current	≤The initial specified value						
<b>Shelf Life</b>	The following specifications shall be satisfied when the capacitors are restored to 20°C after exposing them for 1000 hours at 105°C without voltage applied. <table border="1"> <tr> <td>Capacitance change</td> <td>≤±20% of the initial value</td> </tr> <tr> <td>D.F. (tanδ)</td> <td>≤200% of the initial specified value</td> </tr> <tr> <td>Leakage current</td> <td>≤The initial specified value</td> </tr> </table>	Capacitance change	≤±20% of the initial value	D.F. (tanδ)	≤200% of the initial specified value	Leakage current	≤The initial specified value
Capacitance change	≤±20% of the initial value						
D.F. (tanδ)	≤200% of the initial specified value						
Leakage current	≤The initial specified value						

## ◆ DIMENSIONS (Screw-Mount) [mm]

● Terminal Code : LG

● Mounting Clamp Code : B

● Mounting Clamp Code : C



<Screw specifications>  
 φ63.5 to φ89  
 Plus hexagon-headed screw :  
 M5×0.8×10  
 Maximum screw tightening torque :  
 3.23Nm  
 φ100  
 Cross-recessed head (Phillips) screw :  
 M8×1.25×16  
 Spring washer  
 Washer  
 Maximum screw tightening torque :  
 6.31Nm

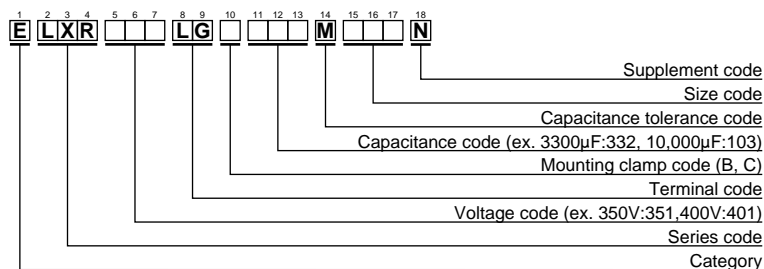
φ63.5 & φ76 : G=6  
 φ89 : G=4  
 φ100 : G=10

φD	A	B	W	F
63.5	90	76	80	28.0
76	104.5	90	93.5	31.5

φD	E	K	F	J
63.5	38.1	43.5	28.0	14.0
76	44.5	50.0	31.5	14.0
89	50.8	56.5	31.5	16.0
100	56.5	63.4	41.5	18.0

\* The screw and the mounting clamp are separately supplied and not attached to the product.

## ◆ PART NUMBERING SYSTEM



Please refer to "A guide to global code (screw-mount terminal type)"



LXR Series

◆STANDARD RATINGS

WV (Vdc)	Cap (μF)	Case size φD×L(mm)	tanδ	Rated ripple current (Arms/105°C,120Hz)	Part No.	WV (Vdc)	Cap (μF)	Case size φD×L(mm)	tanδ	Rated ripple current (Arms/105°C,120Hz)	Part No.	
350	3300	63.5×115	0.15	14.4	ELXR351LGC332MDB5N	400	6800	76×170	0.15	27.3	ELXR401LGC682MEH0N	
	3900	63.5×130	0.15	16.6	ELXR351LGC392MDD0N		6800	89×155	0.15	26.6	ELXR401LGC682MFF5N	
	4700	63.5×155	0.15	19.8	ELXR351LGC472MDF5N		8200	89×170	0.15	30.5	ELXR401LGC822MFH0N	
	4700	76×115	0.15	19.1	ELXR351LGC472MEB5N		10000	100×190	0.15	34.5	ELXR401LGC103MGK0N	
	5600	63.5×170	0.15	22.5	ELXR351LGC562MDH0N		12000	100×220	0.15	40.2	ELXR401LGC123MGN0N	
	5600	76×130	0.15	21.9	ELXR351LGC562MED0N		450	2200	63.5×115	0.15	11.8	ELXR451LGC222MDB5N
	6800	76×155	0.15	26.2	ELXR351LGC682MEF5N			2700	63.5×130	0.15	13.7	ELXR451LGC272MDD0N
	8200	76×170	0.15	30.0	ELXR351LGC822MEH0N			2700	76×115	0.15	14.5	ELXR451LGC272MEB5N
	8200	89×155	0.15	29.2	ELXR351LGC822MFF5N			3300	63.5×155	0.15	16.5	ELXR451LGC332MDF5N
	10000	89×170	0.15	33.7	ELXR351LGC103MFH0N			3300	76×130	0.15	16.9	ELXR451LGC332MED0N
	12000	100×190	0.15	37.8	ELXR351LGC123MGK0N			3900	63.5×170	0.15	18.7	ELXR451LGC392MDH0N
	15000	100×250	0.15	47.7	ELXR351LGC153MGR0N			4700	76×155	0.15	21.7	ELXR451LGC472MEF5N
400	2700	63.5×115	0.15	13.1	ELXR401LGC272MDB5N	5600		76×190	0.15	26.1	ELXR451LGC562MEK0N	
	3300	63.5×130	0.15	15.2	ELXR401LGC332MDD0N	5600		89×155	0.15	24.1	ELXR451LGC562MFF5N	
	3900	63.5×155	0.15	17.9	ELXR401LGC392MDF5N	6800		89×170	0.15	27.8	ELXR451LGC682MFH0N	
	3900	76×115	0.15	18.2	ELXR401LGC392MEB5N	8200		89×190	0.15	32.0	ELXR451LGC822MFK0N	
	4700	63.5×170	0.15	20.5	ELXR401LGC472MDH0N	10000		100×220	0.15	36.8	ELXR451LGC103MGN0N	
	4700	76×130	0.15	20.1	ELXR401LGC472MED0N	12000	100×250	0.15	42.7	ELXR451LGC123MGR0N		
	5600	76×155	0.15	23.8	ELXR401LGC562MEF5N							

◆RATED RIPPLE CURRENT MULTIPLIERS

●Frequency Multipliers

Frequency (Hz)	120	300	1k	3k
Coefficient	1.0	1.1	1.3	1.4

The endurance of capacitors is shortened with internal heating produced by ripple current at the rate of halving the lifetime with every 5 to 10°C rise. When long life performance is required in actual use, the rms ripple current has to be reduced. Also, for the LXR series capacitors, using them at operating voltage less than their rated voltage can extend their lifetime. For the details, please contact a representative of Nippon Chemi-Con.

# Mouser Electronics

Authorized Distributor

Click to View Pricing, Inventory, Delivery & Lifecycle Information:

[United Chemi-Con \(UCC\):](#)

[ELXR451LGC822MFK0N](#)