

DRAWING MADE IN THIRD ANGLE PROJECTION

3

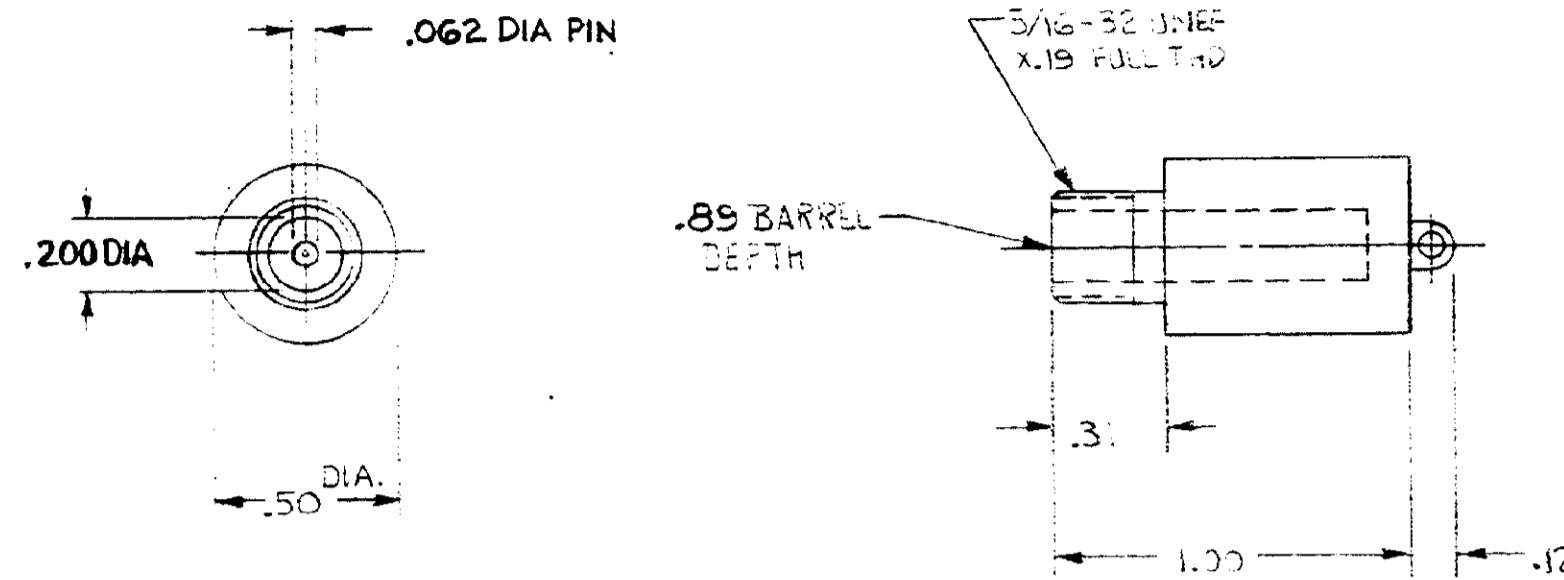
2

1

LOC L 37  
DIST 37

THIS DRAWING IS UNPUBLISHED. RELEASED FOR PUBLICATION . 19  
© COPYRIGHT 19 BY AMP INCORPORATED, HARRISBURG, PA. ALL INTERNATIONAL RIGHTS RESERVED. AMP PRODUCTS MAY BE COVERED BY U.S. AND FOREIGN PATENTS AND/OR PATENTS PENDING.

REVISIONS						
P	F	ZONE	LTR	DESCRIPTION	DATE	APPROVED
			0	RELEASE. NPR 1401	RPH 4-3-85	SWL



1. RECEPTACLE TO MATE WITH AMP LGH 1/2 L LEAD ASSEMBLY. AVAILABLE SEPARATELY.
2. SPECIAL HANDLING REQUIREMENTS:  
SPECIAL TESTING: PIN TO GND, 23KVDC @ SEA LEVEL ROOM TEMP, MAX LEAKAGE 10pa  
100% TESTING.  
TEST DATA SUPPLIED WITH EACH LOT.

868438-1

PART NO

UNLESS OTHERWISE SPECIFIED DIMENSIONS ARE IN INCHES. TOLERANCES ON: DECIMALS XX±.02 ANGLES XXX±.005	CONTRACT NO	<b>AMP</b>   AMP INCORPORATED Harrisburg, Pa. 17105	
	DR <i>R. B. Hapner 3-29-85</i>		
MATERIAL MOLDED GLASS EPOXY	CHK	APPD <i>John W. Gaur 4-3-85</i>	APPD
FINISH BLACK	DSGN APPD	OTHER APPD	SIZE <b>C</b>
			FSCM NO <b>00779</b>
			DRAWING NO <b>868438</b>
			SCALE NTS
			SHEET

# Mouser Electronics

Authorized Distributor

Click to View Pricing, Inventory, Delivery & Lifecycle Information:

[TE Connectivity:](#)

[868438-1](#)