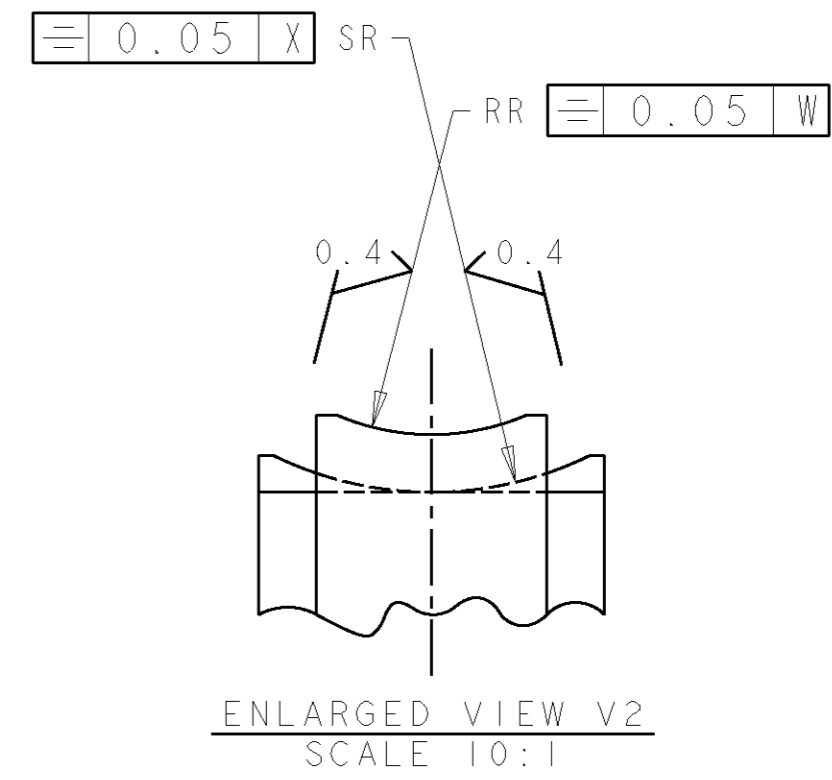
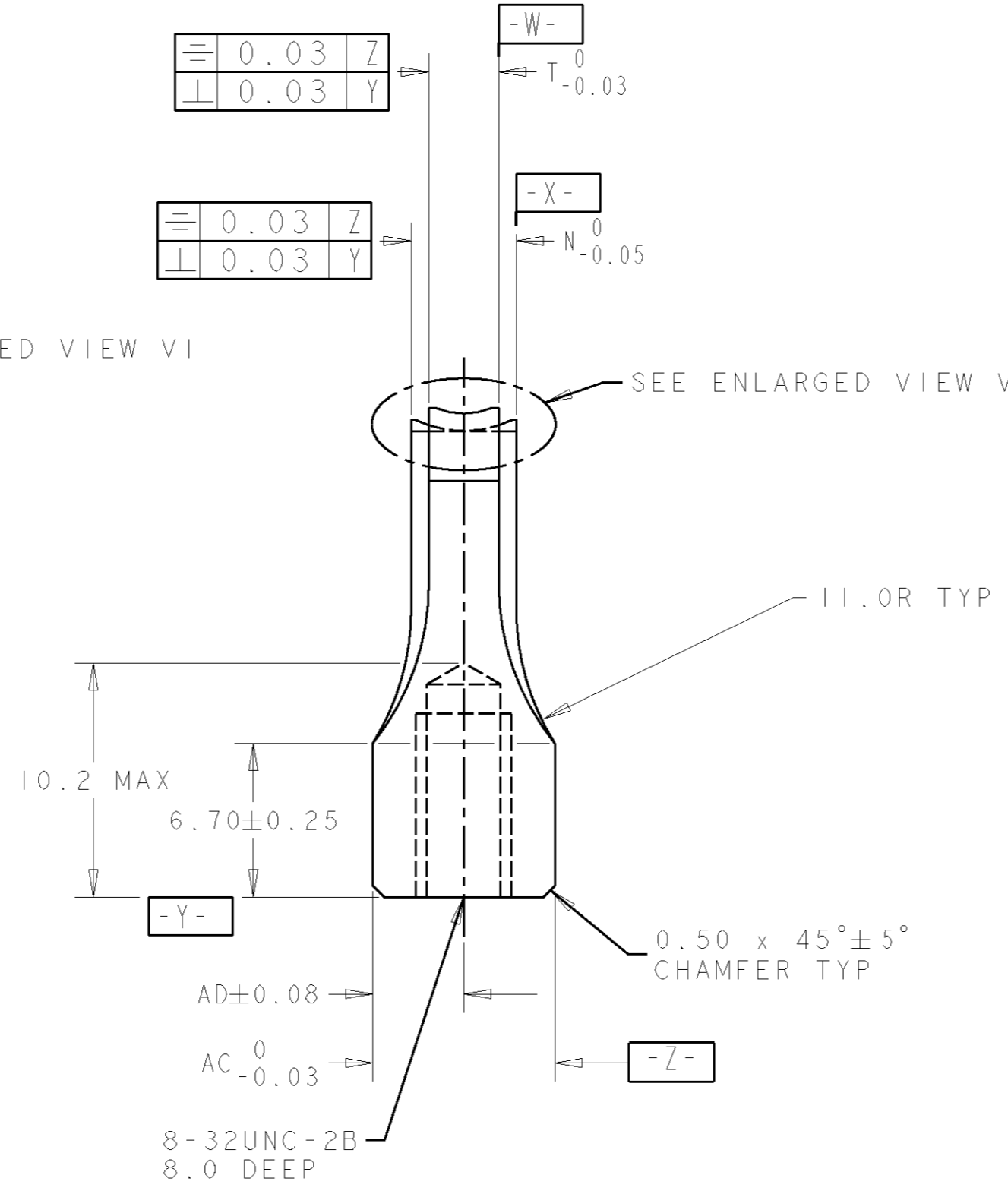
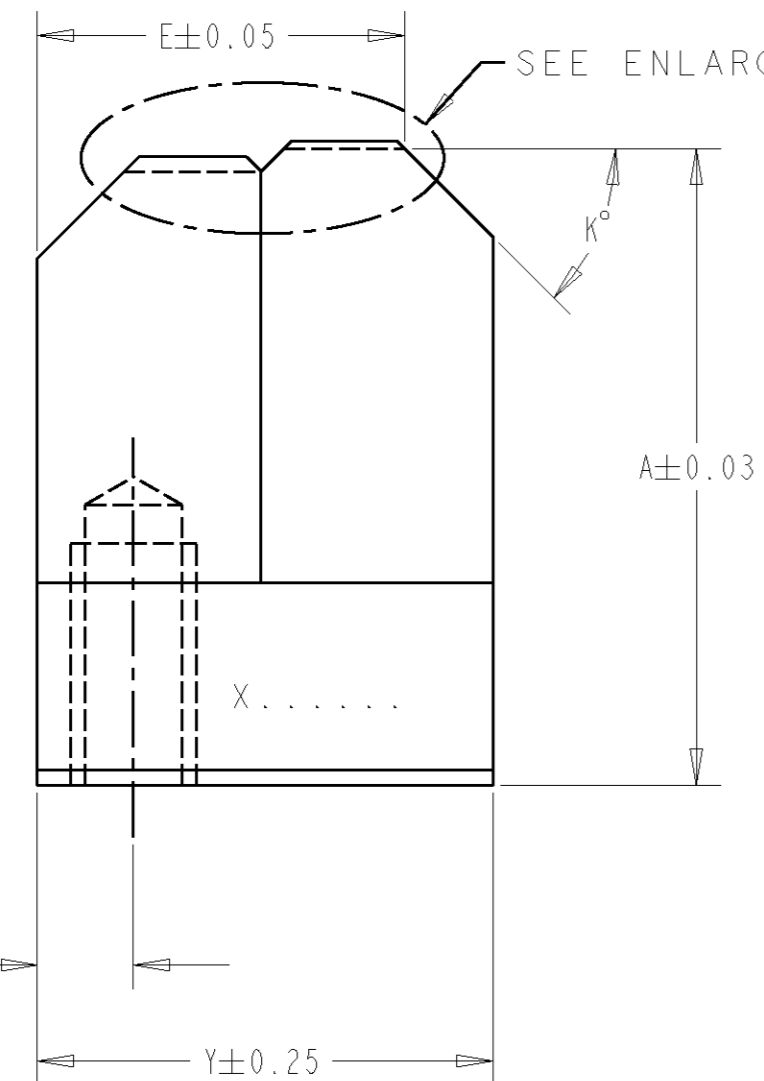
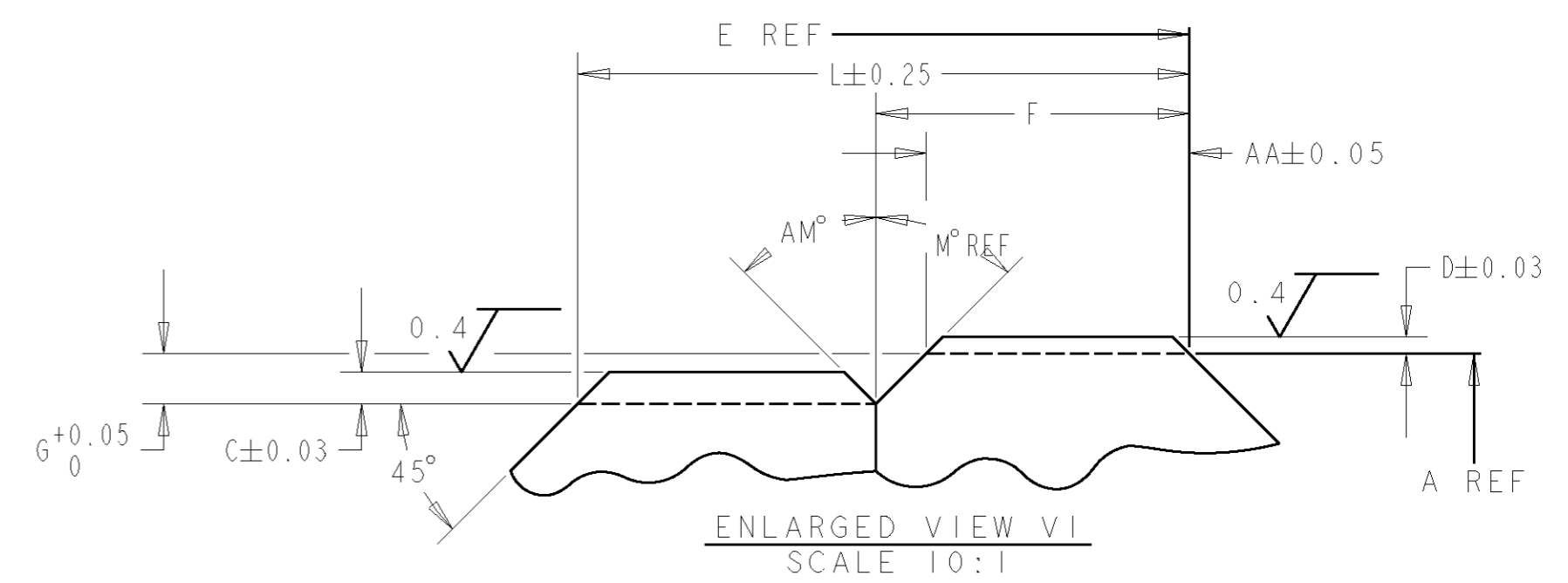
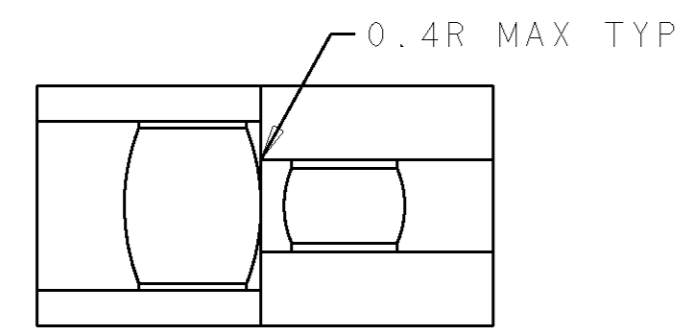


3rd ANGLE (AMERICAN) PROJECTION
DIMENSIONS IN METRIC
DO NOT SCALE PRINT

NUMBER
576258

IDENTIFY PART AS PER SPEC. 115-67-2 IN AREA X.....
FOR METHOD, REFER TO PARA 3.3 C; INCLUDE VENDOR SYMBOL, AND ENSURE PART IS DEMAGNETISED.
LEGAL, HEALTH, SAFETY AND ENVIRONMENTAL CONSTRAINTS
MAY APPLY TO THE MATERIALS SPECIFIED ON THIS DOCUMENT REFER TO ENGINEERING MATERIAL SPEC. 100-3012



NOTES:
1. TOP EDGES TO REMAIN SHARP, REMOVE BURRS ONLY.

-	-	-	K	S. J. MASSIE	T3032	24-02-93	MATERIAL	HEAT TREAT	FINISH
Y	M CLIFFORD	EB00-0232-99	21-04-99	J	S. J. MASSIE	T3012	100-43	111-43	112-157
W	L. J. LOFTHOUSE	EB00-0163-97	20-03-97	H	S. J. MASSIE	T2999		Rc 56-58	
V	L. J. LOFTHOUSE	EB00-0268-96	03-06-96	G	S. J. MASSIE	T2933			
U	L. J. LOFTHOUSE	EB00-0120-96	19-03-96	F	S. J. MASSIE	T2923			
T	R. M. SQUIRES	T3554	23-06-95	E	S. J. MASSIE	T2911			
S	R. M. SQUIRES	T3458	29-09-94	D	S. J. MASSIE	T2792			
R	S. J. MASSIE	T3402	26-05-94	C	S. J. MASSIE	T2735			
P	S. J. MASSIE	T3261	12-04-94	B	S. J. MASSIE	T2661			
N	S. J. MASSIE	T3229	10-08-93	A	S. J. MASSIE	T2642			
M	S. J. MASSIE	T3149	13-05-93	O	S. J. MASSIE	T2639			
L	S. J. MASSIE	T3097	01-04-93	I	S. J. MASSIE	AS DRN			
REV	ENGINEER	ECN	DATE	REV	ENGINEER	ECN	DATE	SHT 1 OF 2	LOC E A2 NUMBER 576258 REV Y



ANVIL, COMBINATION

IDENTIFY PART AS PER SPEC. 115-67-2 IN X.....
 FOR METHOD, REFER TO PARA 3.3 C; INCLUDE VENDOR
 SYMBOL, AND ENSURE PART IS DEMAGNETISED.
 LEGAL, HEALTH, SAFETY AND ENVIRONMENTAL CONSTRAINTS
 MAY APPLY TO THE MATERIALS SPECIFIED ON THIS
 DOCUMENT REFER TO ENGINEERING MATERIAL SPEC. 100-3012

NUMBER
576258

3rd ANGLE (AMERICAN) PROJECTION
 DIMENSIONS IN METRIC
 DO NOT SCALE PRINT

This information is confidential and is disclosed to you on condition that no further dis-
 closure is made by you to other than AMP Personnel without written authorization from
 AMP of GREAT BRITAIN LTD.

PART NO	REV	T	N	A	G	AA	F	L	E	Y	AM°	M°	K°	D	RR	C	SR	AC	AD	FIRST USED
576258-1	0	2.03	3.56	21.06	0.40	4.85	5.23	8.84	12.50	15.06	45°	43°	45°	0.15	2.29	0.86	1.78	7.92	3.96	9-576533-2
576258-2	J	3.56	6.35	21.06	0.30	4.38	4.90	9.42	12.14	15.06	#	60°	45°	0.28	4.75	#	#	7.92	3.96	1-576074-0
576258-3	B	2.03	3.56	21.06	#	#	4.70	8.23	12.14	15.06	45°	45°	45°	0.15	2.29	0.28	4.75	7.92	3.96	576590-5
576258-4	C	2.79	3.81	21.06	0.50	4.06	4.55	7.69	12.50	15.06	30°	44°	45°	0.23	3.18	0.87	2.00	7.92	3.96	9-576533-3
576258-5	D	2.29	3.56	20.55	0.51	3.56	4.45	7.92	12.14	15.06	30°	60°	45°	0.18	2.29	0.82	1.84	7.92	3.96	1-576527-7
576258-6	D	2.79	3.94	21.06	#	#	5.08	9.65	11.89	15.06	45°	#	45°	0.20	3.18	0.50	3.18	7.92	3.96	576519-6
576258-7	E	2.54	3.81	21.06	0.38	4.34	5.00	8.89	12.09	15.00	45°	60°	45°	0.18	3.18	0.30	4.75	7.92	3.96	2-576074-1
576258-8	H	6.35	8.89	20.32	1.02	5.84	7.59	13.16	13.67	16.59	30°	60°	45°	0.46	7.92	1.07	8.89	9.53	4.76	576077-4
576258-9	G	3.05	4.57	21.06	#	#	5.66	10.31	13.54	15.06	45°	#	45°	0.18	3.18	1.16	2.36	7.92	3.96	576540-3
1-576258-0	K	2.79	3.94	21.06	#	#	6.92	10.73	15.00	18.00	45°	45°	45°	0.23	3.18	0.75	2.34	7.92	3.96	576009-9
1-576258-1	L	2.29	3.81	20.55	0.51	3.60	3.89	9.65	12.00	15.06	30°	30°	45°	0.18	2.29	0.94	1.93	7.92	3.96	3-576074-3
1-576258-2	M	2.29	4.06	21.06	0.38	3.30	3.96	7.62	12.14	15.06	30°	60°	45°	0.18	2.29	0.36	4.75	7.92	3.96	2-576074-8
1-576258-3	N	2.79	6.25	21.06	0.38	4.98	5.64	10.62	12.14	15.06	#	60°	45°	0.23	3.18	#	#	7.92	3.96	576520-3
1-576258-4	P	2.79	4.32	21.06	0.38	4.88	5.26	9.53	11.89	15.06	45°	45°	45°	0.23	3.18	1.02	2.30	7.92	3.96	4-576074-9
1-576258-5	R	3.56	5.33	20.32	0.76	4.83	5.59	11.18	11.89	15.06	45°	45°	45°	0.28	4.75	1.45	2.74	7.92	3.96	1-576042-6
1-576258-6	S	2.79	4.32	21.06	#	#	4.82	8.82	12.50	15.06	30°	#	45°	0.23	3.18	0.51	3.86	7.92	3.96	8-576019-6
1-576258-7	S	3.56	5.23	21.06	0.51	5.59	6.48	10.85	12.40	15.06	30°	60°	45°	0.25	4.75	0.53	6.35	7.92	3.96	576097-6
1-576258-8	T	4.57	6.86	21.06	0.76	5.46	6.22	11.56	12.19	15.06	#	45°	45°	0.36	4.75	1.56	4.13	7.92	3.96	3-576064-5
1-576258-9	U	4.06	5.23	21.06	0.69	4.83	6.02	11.00	12.14	15.88	30°	60°	45°	0.25	6.35	0.64	4.75	7.92	3.96	6-576074
2-576258-0	V	3.05	4.47	21.06	0.40	4.70	5.41	11.05	12.14	15.06	30°	60°	45°	0.25	3.18	1.18	2.34	7.92	3.96	7-576074-6
2-576258-1	W	3.56	4.06	21.06	0.40	4.45	4.83	10.50	12.14	15.0	30°	30°	45°	0.48	1.07	1.04	2.03	7.92	3.96	6-576019-5
2-576258-2	Y	2.29	3.30	21.06	0.63	3.17	3.81	9.53	11.89	15.06	45°	45°	30°	0.18	2.29	0.83	1.59	7.92	3.96	1157041-1
2-576258-3																				
2-576258-4																				
2-576258-5																				
2-576258-6																				
2-576258-7																				
2-576258-8																				
2-576258-9																				
3-576258-0																				
3-576258-1																				
3-576258-2																				
3-576258-3																				

SEE SHEET ONE

MATERIAL	HEAT TREAT	FINISH
100-43	111-43 Rc 56-58	112-157
UNLESS OTHERWISE SPECIFIED	REMOVE BURRS, BREAK SHARP EDGES 0.38R MAX. 0.0 = ± 0.51 0.000 = ± 0.013 0.8 ✓ 0.00 = ± 0.13 ANGLES = ± 0° 30'	
FIRST USED SEE TABLE	SCALE #	
DR. S. J. MASSIE	10/91	
CHK. J. GARDNER	01/92	
APP. F. A. B.	01/92	
AMP TERMINAL HOUSE, STANMORE, MIDDX. of Great Britain Ltd.		
ANVIL, COMBINATION		
REV	ENGINEER	ECN
SHT 2 OF 2		LOC E A2
NUMBER		576258
REV	Y	

Mouser Electronics

Authorized Distributor

Click to View Pricing, Inventory, Delivery & Lifecycle Information:

[TE Connectivity:](#)

[2-576258-2](#)