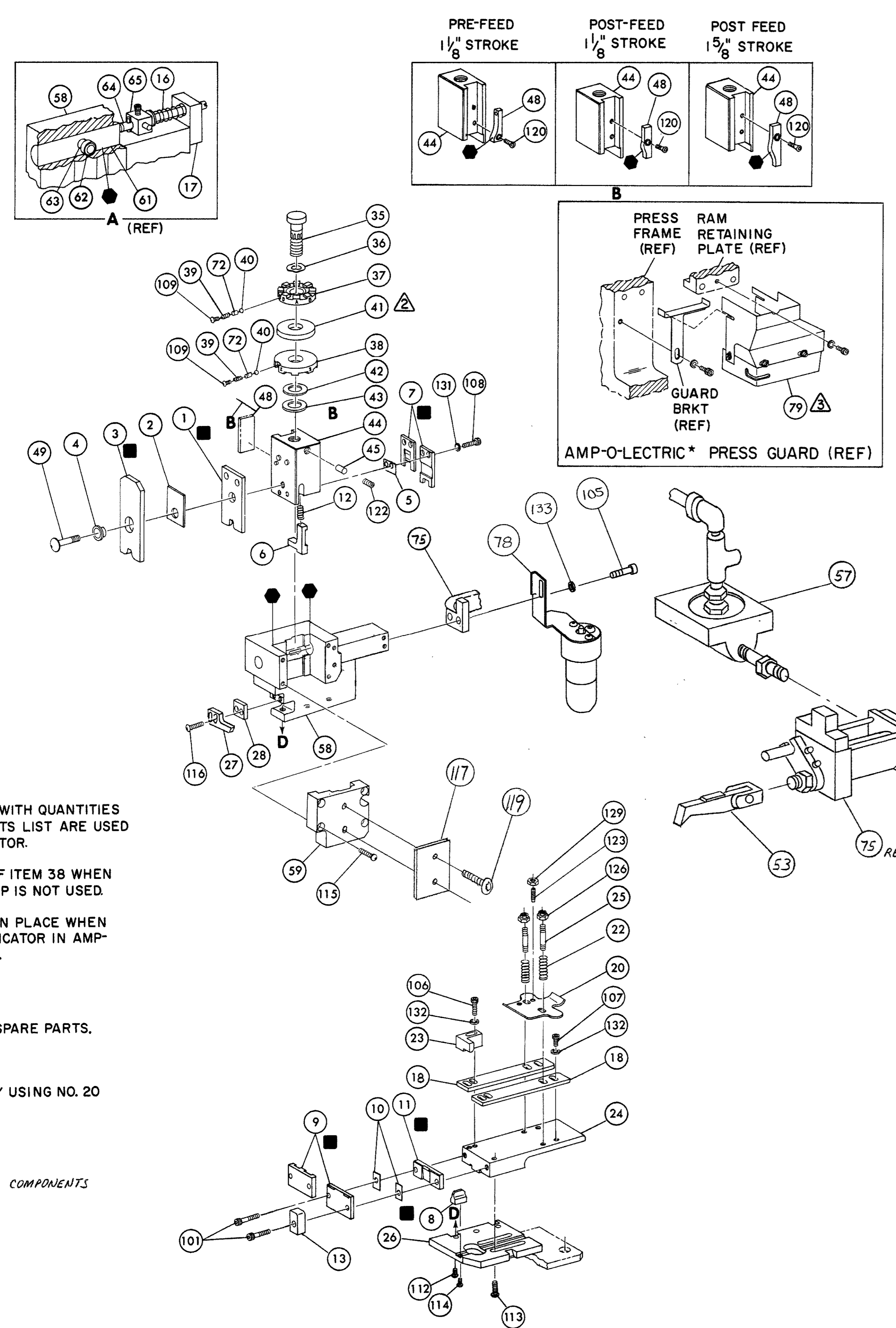


THIS DRAWING IS A CONTROLLED DOCUMENT.



NOTES:

1. ONLY THE ITEMS WITH QUANTITIES SPECIFIED ON PARTS LIST ARE USED ON THIS APPLICATOR.

△ USED IN PLACE OF ITEM 38 WHEN INSULATION CRIMP IS NOT USED.

△ GUARD MUST BE IN PLACE WHEN OPERATING APPLICATOR IN AMP-O-LECTRIC PRESS.

△ SEE REMARKS

KEY:

■ RECOMMENDED SPARE PARTS.

▲ LUBRICATE DAILY USING NO. 20 MACHINE OIL.

● GREASE LIGHTLY.

△ SEE DRAWING FOR COMPONENTS

QTY	PART NO	DESCRIPTION	ITEM NO	QTY	PART NO	DESCRIPTION	ITEM NO
—	21045-3	RING, RETAINING 'C' (.187 DIA) FEED PIN	145	1	454220-1	CAP, RAM	59
—	—	—	144	1	453736-1	HOUSING	58
—	5-21028-1	PIN, SLOT SPG (.12 DIA X .50) FD ADJ ROD	143	1	692655-5	VALVE, ASSY	57
—	—	—	142	—	—	—	56
—	1-21030-7	PIN, DOWEL (.187 DIA X 1.50) HOUSING	141	—	240624-1	PIN, FEED FINGER	55
—	1-21030-1	PIN, DOWEL (.187 DIA X .50) LEVER	140	—	—	SPRING, FEED FINGER	54
—	—	—	139	1	460680-2	FINGER, FEED ASSY	53
—	—	—	138	—	240634	LEVER, TERMINAL	52
—	21899-4	WASHER, FLAT (5/16 DIA) SCR ADJ	137	—	—	—	51
—	—	—	136	—	—	—	50
—	21024-5	WASHER, LOCK (NO 10) FEED ADJ PLATE	135	1	7-21002-9	BOLT, CRIMPER	49
2	21024-5	WASHER, LOCK (NO 10) SHEAR PLATE	134	—	—	CAM, FEED STROKE	48
2	21024-5	WASHER, LOCK (NO 10) FEED ROD GUIDE	133	—	—	—	47
5	21024-4	WASHER, LOCK (NO 8) STRIP GUIDE	132	—	—	—	46
2	21024-4	WASHER, LOCK (NO 8) SHEAR BLADE	131	1	690191-1	PLUG, NYLON	45
—	—	—	130	1	455674-1	RAM	44
2	21018-4	NUT, HEX MACH (4-40) DRAG	129	1	690125-1	WASHER, LAMINATED	43
—	21018-5	NUT, HEX MACH (6-32) FD ADJ PLATE	128	1	690124-1	WASHER, RAM	42
—	—	—	127	—	—	SPACER, DISC	41
2	21022-2	NUT, HEX SELF-LKG (8-32) DRAG STUD	126	2	23241-6	BALL, STEEL	40
—	—	—	125	2	690170-1	SPRING, COMPRESSION	39
—	—	—	124	1	690142-1	DISC, INSULATION	38
2	2-21006-6	SCR, SKT SET CUP POINT (4-40 X .62) DRAG	123	1	690141-8	DISC, WIRE	37
1	21009-2	SCR, SKT SET (1/4-20 X 25) (LOC-WEL) RAM	122	1	22480-5	WASHER, SPRING	36
—	—	—	121	1	690212-1	POST, RAM	35
1	1-21002-7	SCR, BTN HD SKT CAP (6-32 X .38) CAM	120	—	—	—	34
2	21017-2	SCR, DRIVE #2 X .19	119	—	—	—	33
—	6-23715-5	SCR, PAN HD MACH (6-32 X 1.50) FEED ADJ	118	—	453880	APPLICATOR, BASIC (SUB ASSY)	32
1	461264-1	PLATE, IDENTIFICATION	117	—	—	—	31
2	2-21002-2	SCR, BTN HD SKT CAP (8-32 X .50) STRIPPER	116	—	—	—	30
4	2-21002-9	SCR, BTN HD SKT CAP (10-32 X .75) HSG CAP	115	—	—	—	29
1	22733-8	SCR, BTN HD SKT CAP (8-32 X .38) (LOC-WEL) ANVIL	114	1	3-690451-2	SPACER, STRIPPER	28
4	3-21002-3	SCR, BTN HD SKT CAP (1/4-20 X .50) STR GDE PL	113	1	240639-1	STRIPPER	27
3	17177-1	SCR, BTN HD SKT CAP (1/4-20 X .62) BASE PL	112	1	455676-1	PLATE, BASE	26
—	—	—	111	2	22354-8	DRAG, STUD	25
—	—	—	110	1	455678-1	PLATE, STRIP GUIDE	24
2	23030-1	SCR, SKT HD CAP (6-32 X .25) (LOC-WEL) CP DISC	109	1	240825-2	PLATE, STRIP HOLD	23
2	2-21000-7	SCR, SKT HD CAP (8-32 X .50) SHEAR BLADE	108	2	4-22281-1	SPRING, DRAG	22
3	7-21000-4	SCR, SKT HD CAP (8-32 X .31) STRIP GUIDE	107	—	—	—	21
2	2-21000-9	SCR, SKT HD CAP (8-32 X .75) STRIP GUIDE	106	1	454177-1	DRAG, STOCK	20
2	3-21000-7	SCR, SKT HD CAP (10-32 X .75) FD ROD GUIDE	105	1	454204-3	GUIDE, STRIP (REAR)	19
—	—	—	104	2	454204-3	GUIDE, STRIP (FRONT & REAR)	18
—	3-21000-6	SCR, SKT HD CAP (10-32 X .62) FD ADJ PLATE	103	—	454178-1	GUIDE, FEED ROD	17
—	3-21000-4	SCR, SKT HD CAP (10-32 X .38) PIVOT BLK	102	—	4-22284-9	SPRING, FEED RETURN	16
2	3-21002-0	SCR, BTN HD CAP (10-32 X .88) SHEAR PLATE	101	—	—	—	15
REF	455745-1	GUARD (WINDOW)	79	—	—	—	14
1	465184-9	LUBRICATOR ASSY	78	1	690481-5	SPACER, HOLD DOWN	13
—	—	OIL, LUBRICATING	77	1	23846-1	SPRING, HOLD DOWN	12
1	454406-1	SPACER, LUB-BRACKET	76	1	240644-1	PLATE, REAR SHEAR	11
1	460277-1	AIR FEED ASSY	75	—	—	SPACER, SHEAR PLATE	10
—	—	—	74	1	2-690482-9	PLATE, FRONT SHEAR	9
—	458109-1	WASHER, FLAT (SPECIAL)	73	1	238005-1	ANVIL	8
2	690603-1	SPRING, ASSIST	72	1	2-690474-6	BLADE, SLUG	7
—	690517-1	SPACER	71	1	1-455892-4	HOLD DOWN, TERMINAL	6
—	22594-8	NUT, HEX	70	1	1-240641-0	SPACER, SHEAR BLADE	5
—	240628-1	PLATE, ADJ	69	1	238009-1	SPACER, TUBULAR	4
—	240626-1	SHAFT, PIVOT	68	1	456134-6	CRIMPER, INSULATION	3
—	240633-1	BUSHING	67	1	1-455888-1	SPACER, INSULATION	2
—	455680-1	LEVER, INTERMEDIATE	66	1	456422-2	CRIMPER, WIRE	1
—	240629-1	BLOCK, PIVOT	65	—	—	—	—
—	240632-2	SCREW, ADJ	64	—	—	—	—
—	240659-3	PIN, CAM ROLLER	63	—	—	—	—
—	240658-1	CAM, ROLLER	62	—	—	—	—
—	454398-1	ROD, FEED	60	—	—	—	—

CRIMPING DATA				APPLICATOR WILL APPLY	
PAD LTR	CRIMP HEIGHT	WIRE SIZE	WIRE LENGTH	FASTON	
A	.073	1#14 OR (1#18 & 1#16)		42219	
B	.068	2#18		42400	
C	.064	1#16		RING	42660
D	.058	1#18		350981	42706
CRIMP	SIZE	TYPE	FEED	APPL INST	
WIRE	.110	F	.843	A1 8039	60275
INSUL	.180	F			60488
WIRE RANGE	18-14	INSULATION RANGE	.120-.170*	PRESS NO	565435-5
				350983	60713
REMARKS					
AMP-O-LECTRIC AIR-FEED					
△ LUBRICATION REQUIRED TO APPLY NICKEL, GOLD OR SILVER PLATED TERMINALS.					
* INSULATION RANGE .085-.140					

REMARKS	NO	REV
APPL USED ON MACHINE PART NO	MACH SERIAL NO	DISTRIBUTION
CUSTOMER NAME	APPL SERIAL NO	ORIGINAL
ADDRESS	PURCHASE ORDER	CUSTOMER COPY
CITY	ENG APP	FIELD ENG COPY

Mouser Electronics

Authorized Distributor

Click to View Pricing, Inventory, Delivery & Lifecycle Information:

[TE Connectivity:](#)

[466649-4](#)