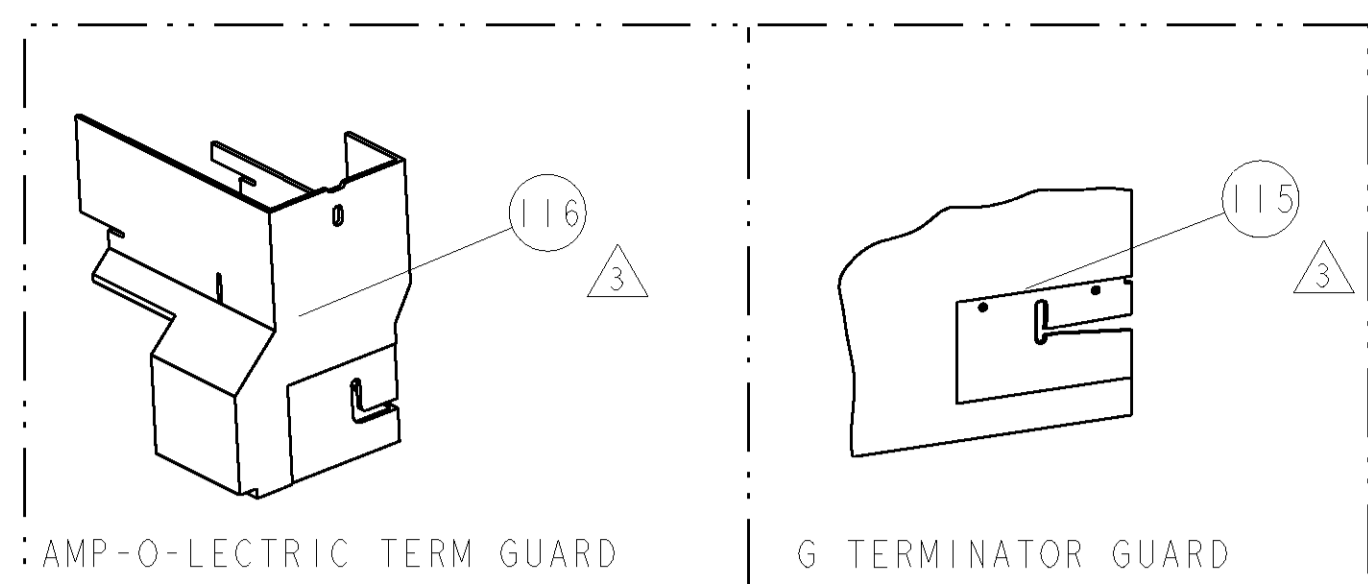


PART NUMBER	REV	FIRST USED	POWER UNIT	FEED TYPE	DESCRIPTION
1855360-1	A	122500-1	LEADMAKER	POST FEED	CUTS CARRIER
1855360-2	A	565435-5	BENCH MODEL K	PRE FEED	CUTS CARRIER
1855360-3	A	354500-1	BENCH MODEL G	PRE FEED	CUTS CARRIER
1855360-6	A	122500-1	LEADMAKER	POST FEED	CONTINUOUS CARRIER
7-1855360-7	A	-	-	-	SPARE PARTS

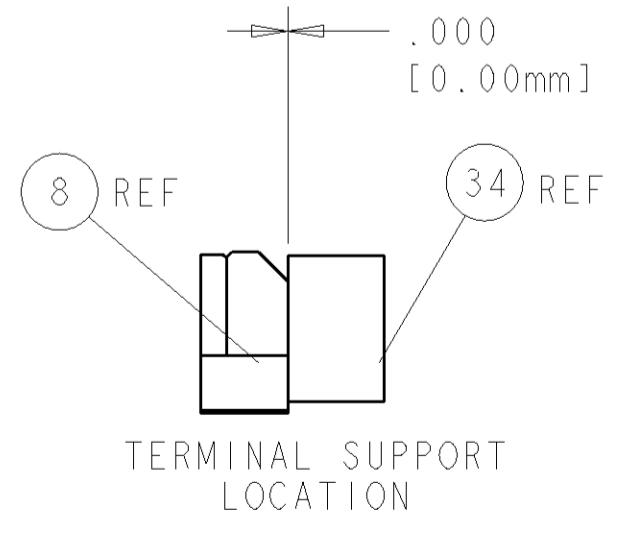
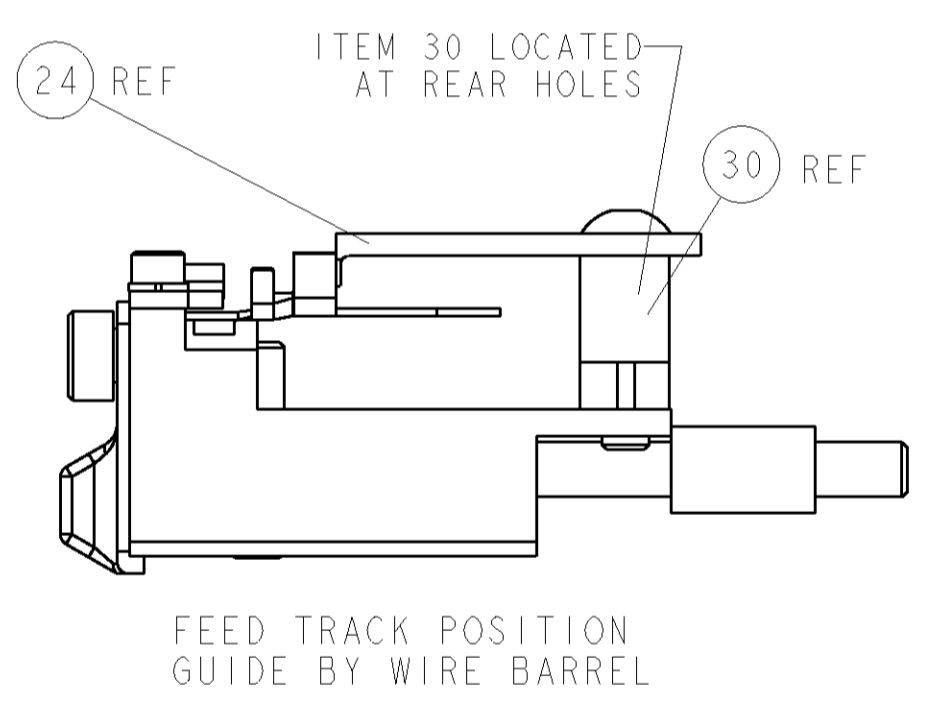
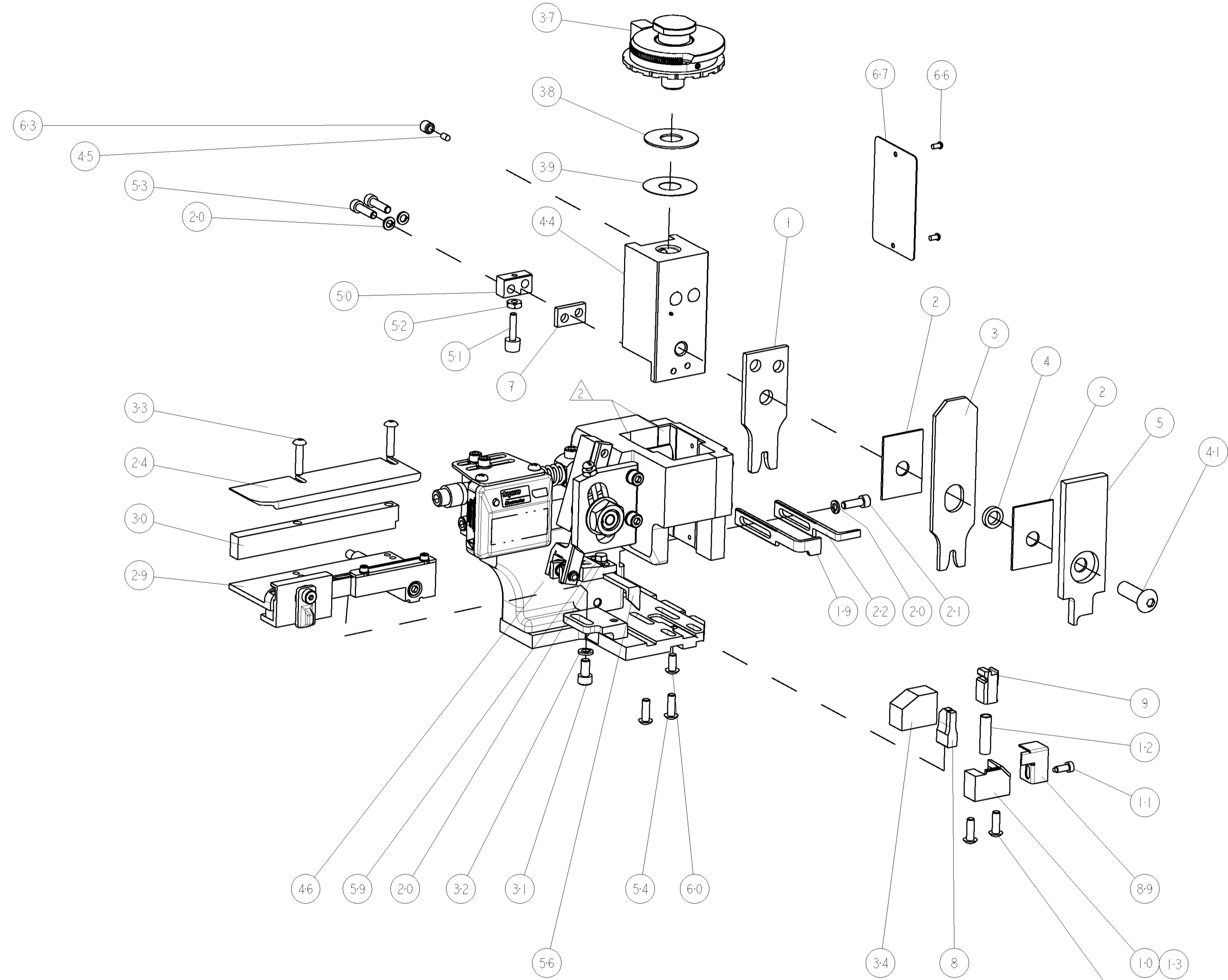


TERMINAL NAME: RING TONGUE		YAZAKI TERMINAL - FORD CRIMP SPECS		REF SETTING
TE PN	COMP PN	CRIMP HEIGHT	WIRE SIZE	
1949590-1	E8EB-14463-JA	2.55±0.05mm [.100±.002]	14AWG	C5
-	-	2.45±0.05mm [.096±.002]	16AWG	D5
CRIMP	SIZE	TYPE	RANGE	
-	3.94mm [.155]	F	16-14 AWG	
-	4.06mm [.160]	O	Ø4.20 MAX	
WIRE STRIP LENGTH	TERM APPL SPEC	FEED	APPLICATOR INSTRUCTIONS	SET UP GAGE
.183 - .198	FORD	.562	408-8040	458637-1

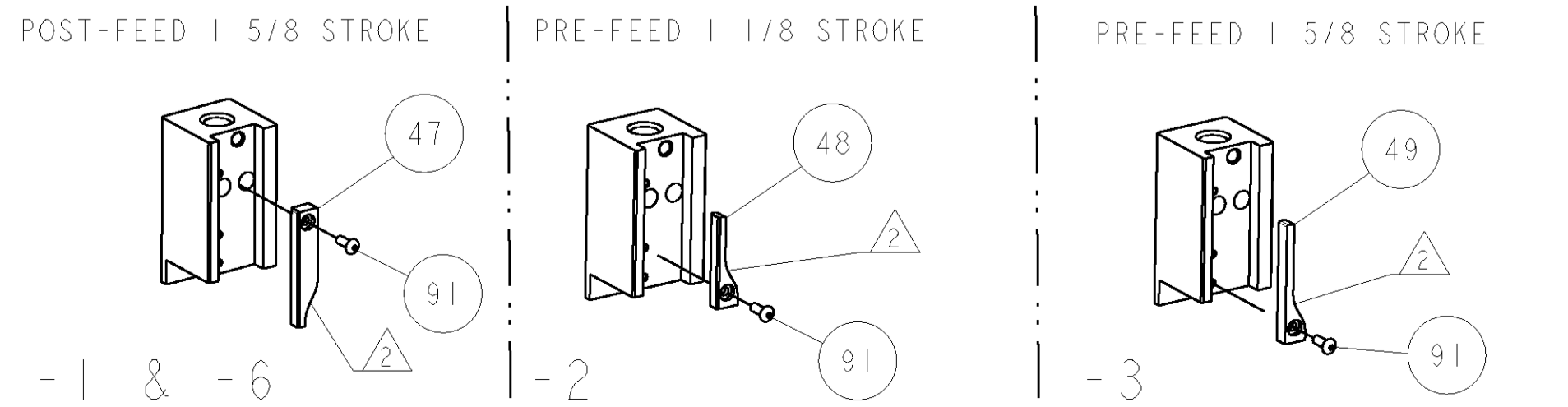
LOC	DIST	P	LTR	DESCRIPTION	DATE	DWN	APPR
A	66			RELEASED	03JAN2008	BH	BH

- △ RECOMMENDED SPARE PARTS
- △ GREASE LIGHTLY
- △ GUARD MUST BE IN PLACE WHEN OPERATING APPLICATOR IN A BENCH MACHINE

**\* WARNING**  
ON INSTALLATION, SET WIRE DISC TO LARGEST WIRE SIZE SETTING. USE OF SETTINGS BELOW MIN. REQUIRED CRIMP HEIGHT SETTING WILL CAUSE DAMAGE TO CRIMP TOOLING.



QTY	REF	DESCRIPTION	ITEM NO
1	REF	GUARD WINDOW	116
1	REF	INSERT, GUARD	115
1		SCR, BTN SKT HD CAP 6-32 X .375	91
1		GUARD, FRONT CHIP	89
1		SF APPL INST 408-8040	72
1		217238-1 GENERAL INSTRUCTION PKG	71
1		461264-5 PLATE, IDENTIFICATION	67
2	2	21017-2 SCREW, DRIVE	66
1	1	21009-2 SCR, SET, SELF LOCKING 1/4-20 X .250	63
1	1	22733-8 SCR, BHSC, SELF-LOCKING, 8-32 X .375	60
1	1	2-22603-0 SCR, HEX HD CAP 8-32 X .312	59
1	1	458537-2 PAWL, FEED	56
4	4	2-21002-2 SCR, BTN SKT HD CAP 8-32 X .500	54
2	2	2-21000-8 SCR, SKT HD CAP 8-32 X .625	53
1	1	21018-5 NUT, HEX, REG 6-32	52
1	1	811242-2 BUMPER, HOLD DOWN	51
1	1	690753-1 SPACER, TONKER	50
1	1	690602-6 CAM, PRE FEED, 1 5/8	49
1	1	690602-5 CAM, PRE FEED, 1 1/8	48
1	1	690501-4 CAM, POST FEED, 1 5/8	47
1	1	459456-1 APPL. BASIC SUB ASSY (SIDE WISE MOCA)	46
1	1	690191-1 PLUG, NYLON	45
1	1	1-455673-4 RAM, SIDE FEED	44
1	1	7-21002-9 SCR, BTN SKT HD CAP 5/16-24 X 1.00	41
1	1	690125-1 SHIM SUB-ASSY	39
1	1	469367-7 SHIM	38
1	1	879103-2 FINE ADJUST HEAD ASSEMBLY	37
1	1	690786-3 TERMINAL SUPPORT	34
2	2	2-21002-4 SCR, BTN SKT HD CAP 8-32 X .750	33
1	1	21024-5 WASHER, SPRG LOCK, REG NO 10	32
1	1	3-21000-4 SCR, SKT HD CAP 10-32 X .375	31
1	1	1320908-2 SPACER, STRIP GUIDE	30
1	1	1633091-1 ASSEMBLY, STRIP GUIDE	29
1	1	1-455888-0 SPACER, CRIMPER	28
1	1	1320928-1 PLATE, STRIP GUIDE	24
1	1	690472-2 STRIPPER	22
1	1	2-21000-7 SCR, SKT HD CAP 8-32 X .500	21
4	4	21024-4 WASHER, SPRG LOCK, REG NO 8	20
1	1	691353-1 STRIPPER	19
1	1	679625-1 SHEAR HOLDER, FRONT (NO CUT)	13
1	1	3-22280-3 SPRING, COMPRESSION	12
1	1	690461-1 STOP, SHEAR	11
1	1	690459-1 SHEAR HOLDER, FRONT	10
1	1	454276-1 FLOATING SHEAR, FRONT	9
1	1	5-1633535-1 ANVIL, COMBINATION	8
1	1	240641-5 SPACER	7
-	-	-	6
1	1	2-455889-0 DEPRESSOR, SHEAR	5
1	1	3-238011-3 BLOCK, CRIMPER SPACER	4
1	1	1583690-9 CRIMPER, INSUL O	3
1	1	1-455888-0 SPACER, CRIMPER	2
1	1	456415-8 CRIMPER, WIRE .155 F PREMIUM	1



DIMENSIONS: INCHES 	TOLERANCES UNLESS OTHERWISE SPECIFIED: 0 PLC ±.001 1 PLC ±.001 2 PLC ±.001 3 PLC ±.001 4 PLC ±.001 ANGLES ±.001	DWN B HIGMAN 19DEC2007 CHK B HIGMAN 19DEC2007 APVD J ELBIN 19DEC2007 NAME PRODUCT SPEC APPLICATION SPEC MATERIAL FINISH	Tyco Electronics Harrisburg, PA 17105-3608 FINE ADJUST SIDE FEED HDM APPLICATOR SIZE CAGE CODE DRAWING NO A1 00779 C=1855360 SCALE 3:5 SHEET 1 OF 1 REV A
---------------------------	---	--	--

CUSTOMER VIEWABLE ASSEMBLY

# Mouser Electronics

Authorized Distributor

Click to View Pricing, Inventory, Delivery & Lifecycle Information:

[TE Connectivity:](#)

[1855360-2](#)