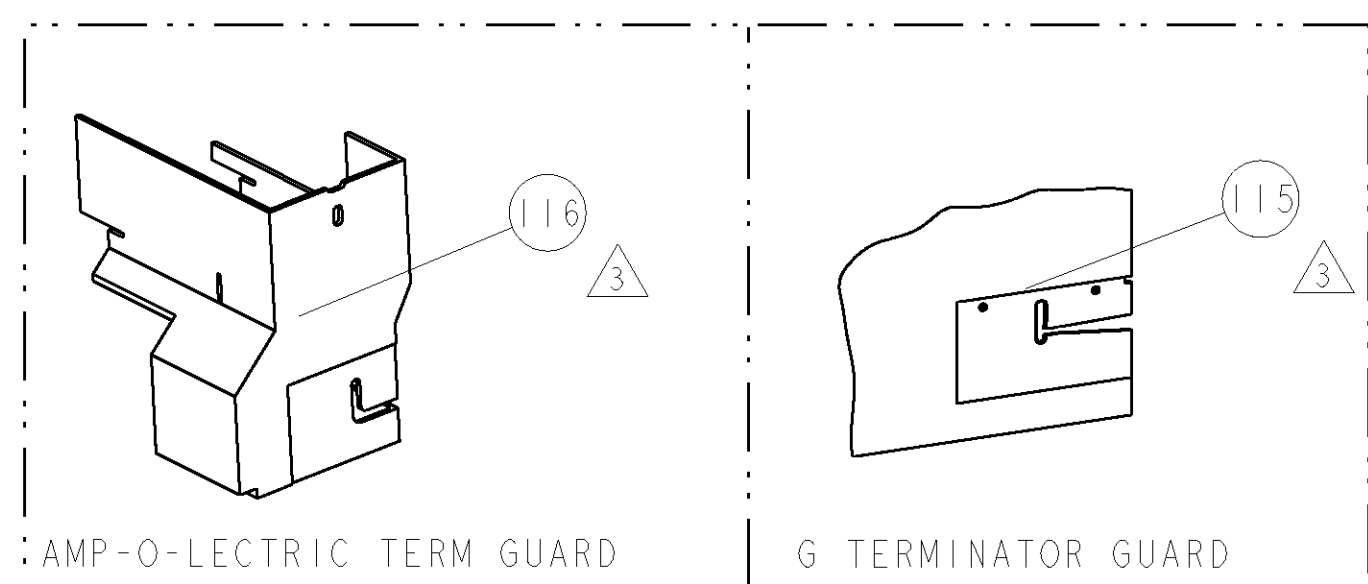


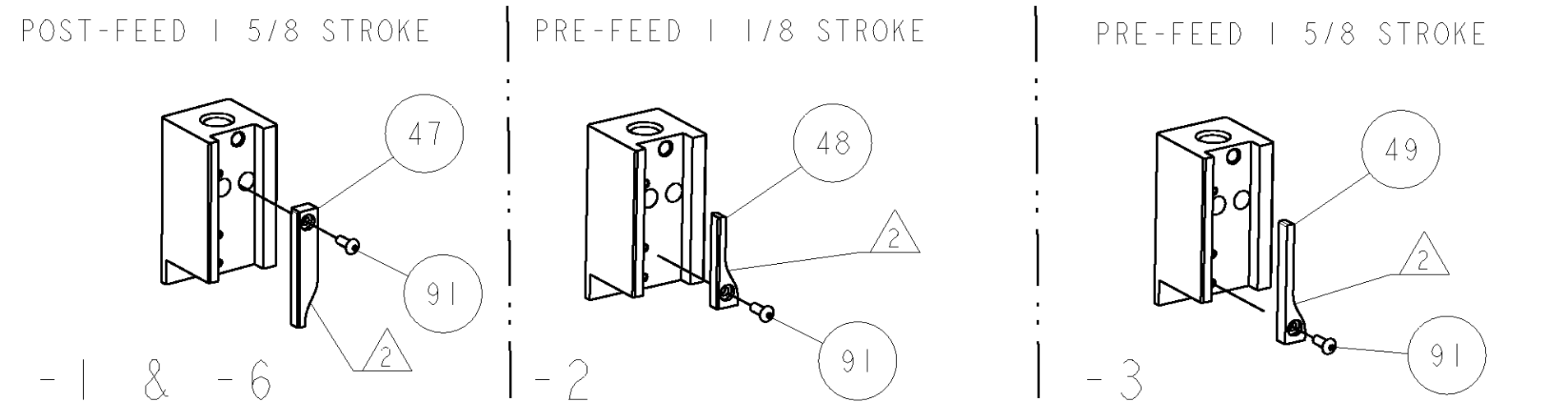
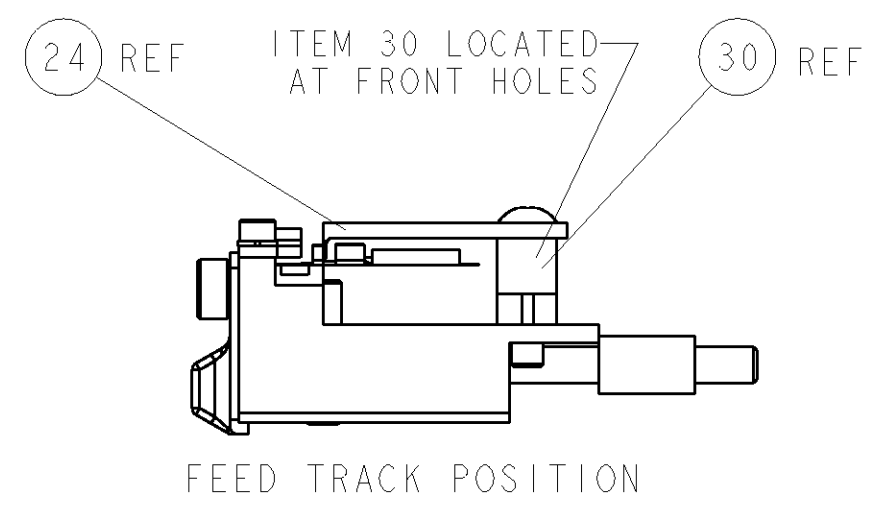
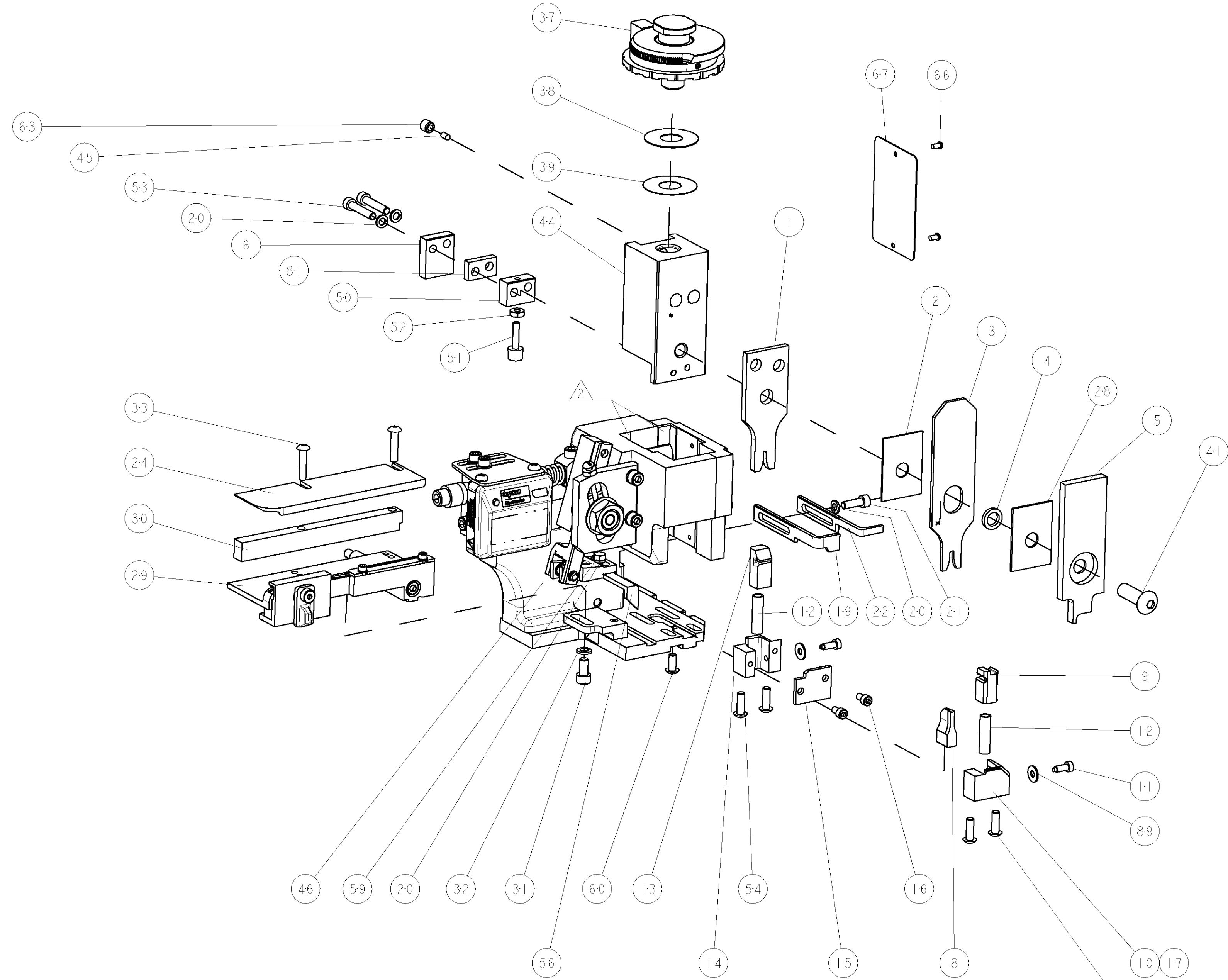
PART NUMBER	REV	FIRST USED	POWER UNIT	FEED TYPE	DESCRIPTION
1855201-1	A	122500-1	LEADMAKER	POST FEED	CUTS CARRIER
1855201-2	A	565435-5	BENCH MODEL K	PRE FEED	CUTS CARRIER
1855201-3	A	354500-1	BENCH MODEL G	PRE FEED	CUTS CARRIER
1855201-6	A	122500-1	LEADMAKER	POST FEED	CONTINUOUS CARRIER
7-1855201-7	A	-	-	-	SPARE PARTS



TERMINAL NAME: FEMALE MICRO-PACK 100			
TYCO PN	PACKARD PN	PACKARD TERMINAL - PACKARD CRIMP SPECS	
286848	12146448		
		CRIMP HEIGHT	WIRE SIZE
		1.35±0.05mm [.053±.002]	1.50mm ²
		1.30±0.05mm [.051±.002]	1.00mm ² or 16 AWG
		1.10±0.05mm [.043±.002]	0.80mm ² or 18 AWG
		1.05±0.05mm [.041±.002]	0.75mm ²
		CRIMP	SIZE
		WIRE	1.78mm [.070]
		INSUL	2.67mm [.105]
		FEED	9.4mm
		APPLICATOR INSTRUCTIONS	408-8040
		SET UP GAGE	458637-1
WIRE STRIP LENGTH	TERM APPL SPEC	APPLICATOR INSTRUCTIONS	
4.7 - 5.5mm	NONE	408-8040	

- △ RECOMMENDED SPARE PARTS
- △ GREASE LIGHTLY
- △ GUARD MUST BE IN PLACE WHEN OPERATING APPLICATOR IN A BENCH MACHINE

*** WARNING**
ON INSTALLATION, SET WIRE DISC TO LARGEST WIRE SIZE SETTING. USE OF SETTINGS BELOW MIN. REQUIRED CRIMP HEIGHT SETTING WILL CAUSE DAMAGE TO CRIMP TOOLING.



LOC	DIST	REV	DESCRIPTION	DATE	BY	APPD
A	66		RELEASED	15MAR2007	RK	GB

REF	QTY	DESCRIPTION	ITEM NO
-	-	REF - ..	455749-1
-	-	REF - ..	679532-1
-	1	SCR, BTN SKT HD CAP 6-32 X .375	91
-	2	WASHER, FLAT, REG NO 6	89
-	1	SPACER	81
-	1	SF APPL INST 408-8040	72
-	1	GENERAL INSTRUCTION PKG	71
-	1	PLATE, IDENTIFICATION	67
-	2	SCR, DRIVE	66
-	1	SCR, SET, SELF LOCKING 1/4-20 X .250	63
-	1	SCR, BHSC, SELF-LOCKING, 8-32 X .375	60
-	1	SCR, HEX HD CAP 8-32 X .312	59
-	1	PAWL, FEED	56
-	4	SCR, BTN SKT HD CAP 8-32 X .500	54
-	2	SCR, SKT HD CAP 8-32 X .875	53
-	1	NUT, HEX, REG 6-32	52
-	1	BUMPER, HOLD DOWN	51
-	1	SPACER, TONKER	50
-	-	CAM, PRE FEED, 1/8	49
-	-	CAM, PRE FEED, 1/8	48
-	1	CAM, POST FEED, 1/8	47
-	1	APPL. BASIC SUB ASSY (SIDE WISE MOCA)	46
-	1	PLUG, NYLON	45
-	1	RAM, SIDE FEED	44
-	1	SCR, BTN SKT HD CAP 5/16-24 X 1.00	41
-	1	SHIM SUB-ASSY	39
-	1	SHIM	38
-	1	FINE ADJUST HEAD ASSEMBLY	37
-	2	SCR, BTN SKT HD CAP 8-32 X .750	33
-	1	WASHER, SPRG LOCK, REG NO 10	32
-	1	SCR, SKT HD CAP 10-32 X .375	31
-	1	SPACER, STRIP GUIDE	30
-	1	ASSEMBLY, STRIP GUIDE	29
-	1	SPACER, CRIMPER	28
-	1	PLATE, STRIP GUIDE	24
-	1	STRIPPER	22
-	1	SCR, SKT HD CAP 8-32 X .500	21
-	4	WASHER, SPRG LOCK, REG NO 8	20
-	-	STRIPPER	19
-	1	SHEAR HOLDER, FRONT (NO CUT)	17
-	2	SCR, SKT HD CAP 6-32 X .250	16
-	1	SHEAR PLATE, REAR	15
-	1	SHEAR HOLDER, REAR	14
-	1	FLOATING SHEAR, REAR	13
-	2	SPRING, COMPRESSION	12
-	2	STOP, SHEAR	11
-	-	SHEAR HOLDER, FRONT	10
-	1	FLOATING SHEAR, FRONT	9
-	1	ANVIL, COMBINATION	8
-	1	DEPRESSOR SHEAR, REAR	6
-	1	DEPRESSOR, SHEAR	5
-	1	BLOCK, CRIMPER SPACER	4
-	1	CRIMPER, INSULATION PREMIUM	3
-	1	SPACER, CRIMPER	2
-	1	CRIMPER, WIRE PREMIUM	1

DIMENSIONS: INCHES		TOLERANCES UNLESS OTHERWISE SPECIFIED:	
0 PLC	±	1 PLC	±0.1
1 PLC	±0.01	2 PLC	±0.01
3 PLC	±0.001	4 PLC	±0.001
ANGLES	±0.0001		
MATERIAL		FINISH	
-		-	
WEIGHT		SCALE	
-		3:5	
CUSTOMER DRAWING		SHEET 1 OF 1	

CUSTOMER VIEWABLE ASSEMBLY

Mouser Electronics

Authorized Distributor

Click to View Pricing, Inventory, Delivery & Lifecycle Information:

[TE Connectivity:](#)

[1855201-6](#)