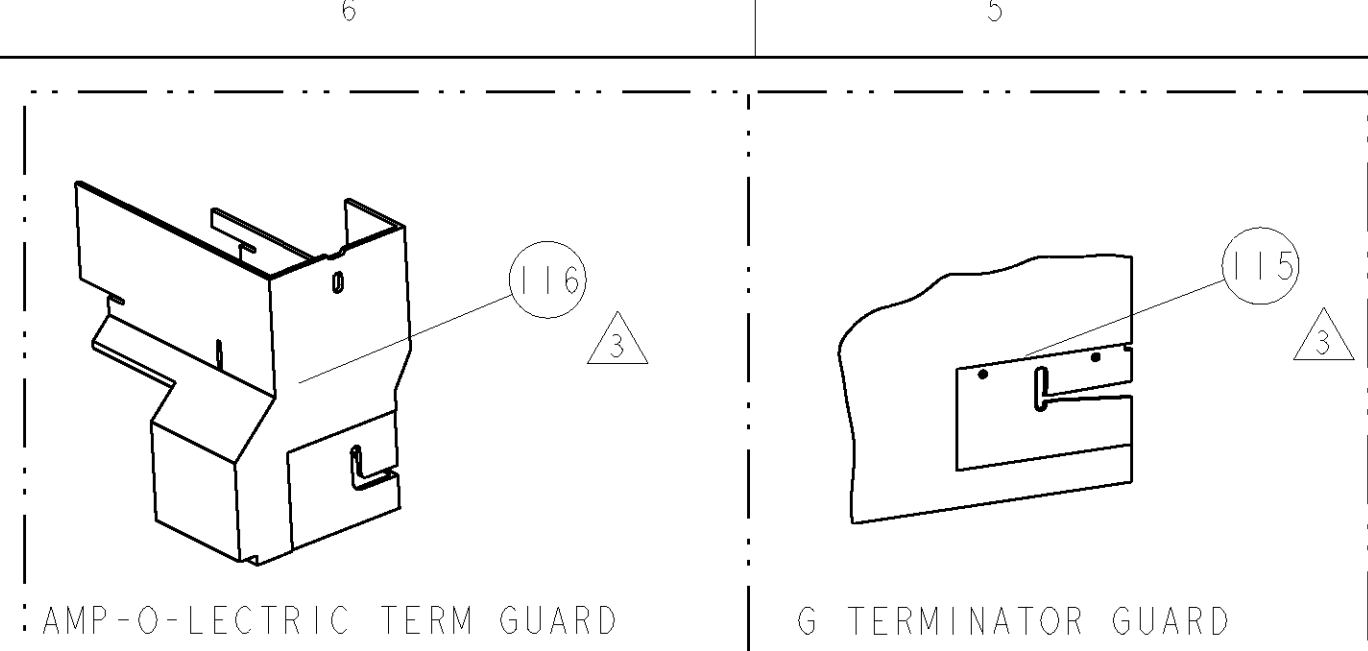


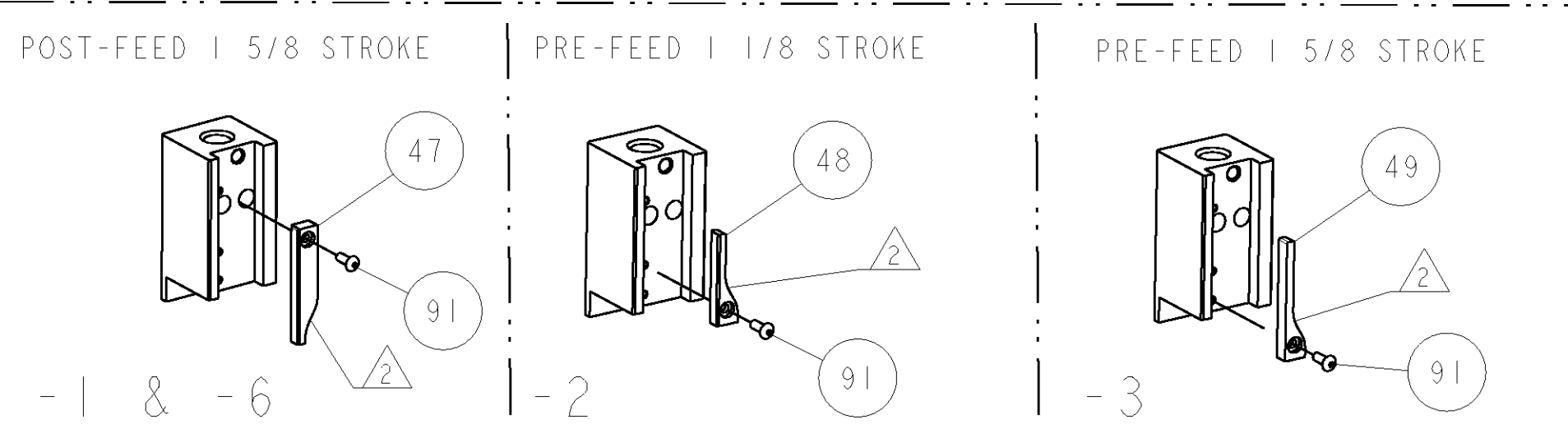
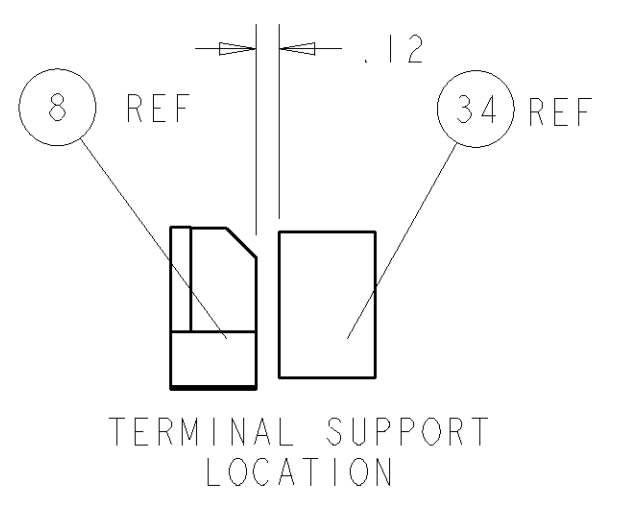
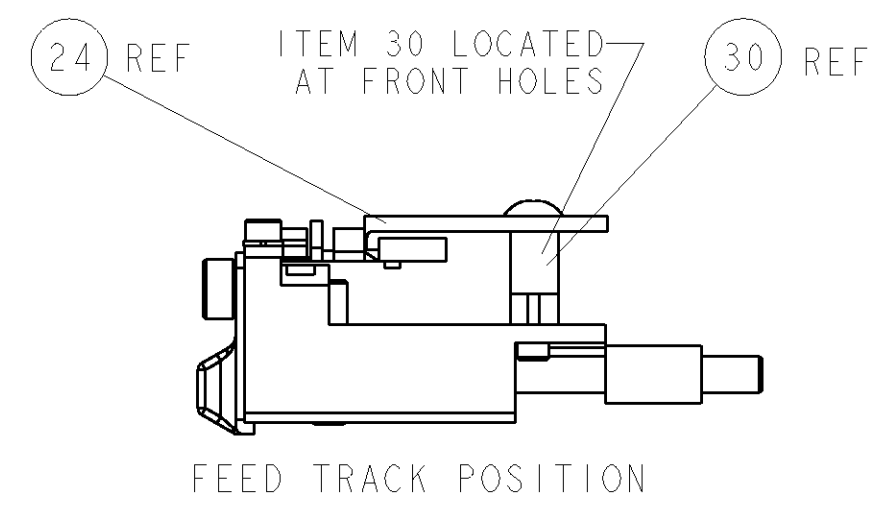
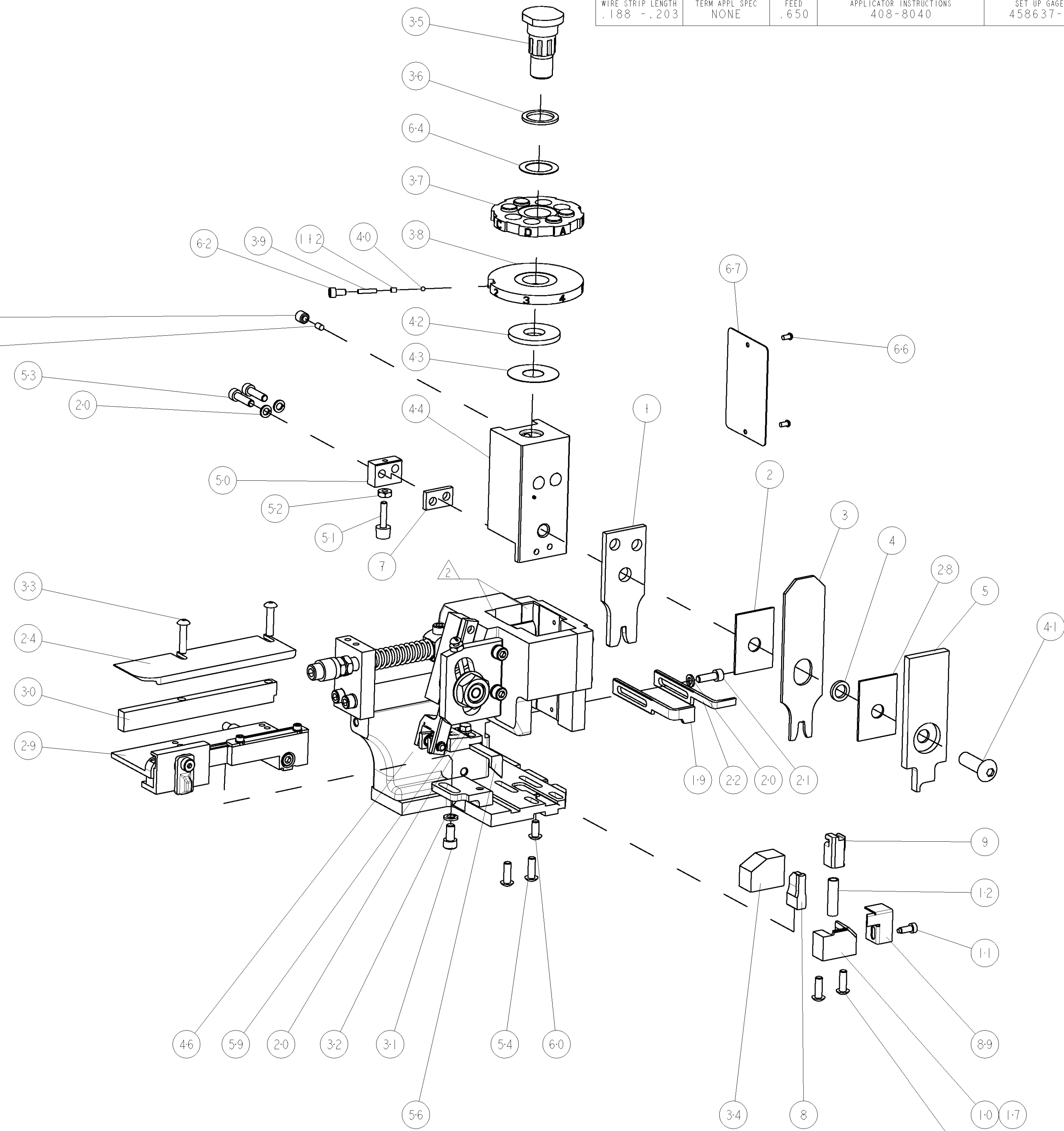
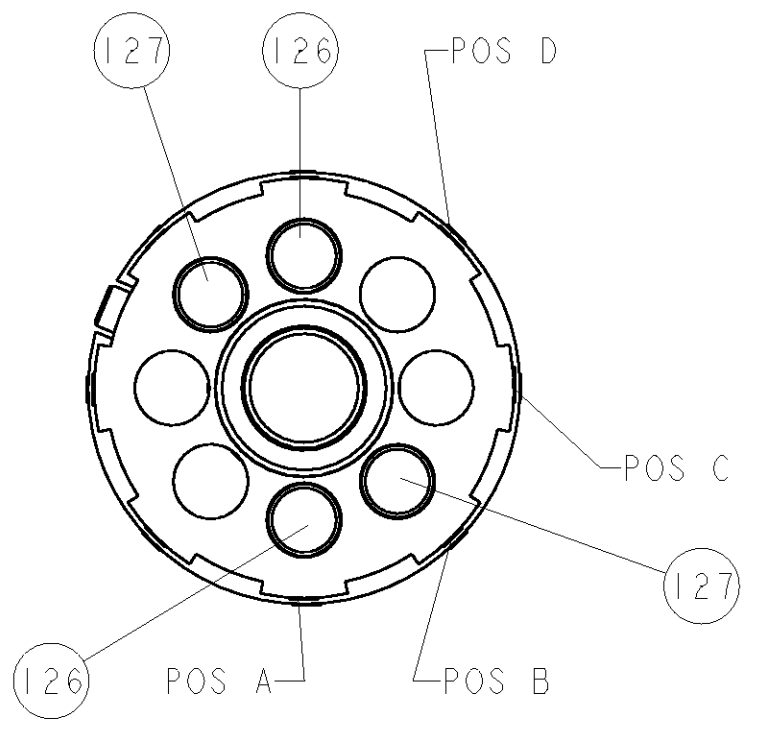
PART NUMBER	REV	FIRST USED	POWER UNIT	FEED TYPE	DESCRIPTION
1852391-1	A	122500-1	LEADMAKER	POST FEED	CUTS CARRIER
1852391-2	A	565435-5	BENCH MODEL K	PRE FEED	CUTS CARRIER
1852391-3	A	354500-1	BENCH MODEL G	PRE FEED	CUTS CARRIER
1852391-6	A	122500-1	LEADMAKER	POST FEED	CONTINUOUS CARRIER
7-1852391-7	A	-	-	-	SPARE PARTS



TYCO PN		MANF PN		SUMITOMO TERMINAL - AMP CRIMP SPECS	
1949225	8100-3396				
		PAD LTR	CRIMP HEIGHT	WIRE SIZE	
		A	.076±.002 [1.93±0.05mm]	12AWG	
		B	.064±.002 [1.63±0.05mm]	14AWG	
		C	±.002 [±0.05mm]		
		D	±.002 [±0.05mm]		
		CRIMP	SIZE	TYPE	RANGE
		WIRE	.130 [3.30mm]	F	14-12 AWG
		INSUL	.180 [4.57mm]	F	.155 max
WIRE STRIP LENGTH .188 - .203	TERM APPL SPEC NONE	FEED .650	APPLICATOR INSTRUCTIONS 408-8040		SET UP GAGE 458637-1

LOC	DIST	REV	DESCRIPTION	DATE	DRN	APPR
A	66		PRODUCT RELEASE	05JAN2007	CMR	TE

- △ RECOMMENDED SPARE PARTS
- △ GREASE LIGHTLY
- △ GUARD MUST BE IN PLACE WHEN OPERATING APPLICATOR IN A BENCH MACHINE



QTY	DESCRIPTION	ITEM NO	
2	2-354779-4	PIN, WIRE DISC, .3110	127
2	9-354778-7	PIN, WIRE DISC, .2980	126
REF	455749-1	GUARD WINDOW	116
REF	679532-1	INSERT, GUARD	115
1	690603-1	SPRING ASSIST AMP-O-MATOR APPLICATOR	112
1	1-21002-7	SCR, BTN SKT HD CAP 6-32 X .375	91
1	318563-1	GUARD, FRONT CHIP	89
1	4088040	SF APPL INST 408-8040	72
1	217238-1	GENERAL INSTRUCTION PKG	71
1	461264-1	PLATE, IDENTIFICATION	67
2	21017-2	SCREW, DRIVE	66
1	986950-1	WASHER, FLAT PRECISION	64
1	21009-2	SCR, SET, SELF LOCKING 1/4-20 X .250	63
1	23030-1	SCR, SKT HD CAP 6-32 X .25	62
1	22733-8	SCR, BHSC, SELF-LOCKING, 8-32 X .375	60
1	2-22603-0	SCR, HEX HD CAP 8-32 X .312	59
1	458537-2	PAWL, FEED	56
4	2-21002-2	SCR, BTN SKT HD CAP 8-32 X .500	54
2	2-21000-8	SCR, SKT HD CAP 8-32 X .625	53
1	21018-5	NUT, HEX, REG 6-32	52
1	811242-2	BUMPER, HOLD DOWN	51
1	690753-1	SPACER, TONKER	50
1	690602-6	CAM, PRE FEED, 1/8	49
1	690602-5	CAM, PRE FEED, 1/18	48
1	690501-4	CAM, POST FEED, 1/8	47
1	459456-1	APPL. BASIC SUB ASSY (SIDE WISE MQCA)	46
1	690191-1	PLUG, NYLON	45
1	455673-1	RAM, SIDE FEED	44
1	690125-1	SHIM SUB-ASSY	43
1	690124-1	WASHER, RAM (.115)	42
1	7-21002-9	SCR, BTN SKT HD CAP 5/16-24 X 1.00	41
1	23241-6	BALL, STEEL	40
1	690170-1	SPRING, COMPRESSION	39
1	1-690142-0	DISC, INSULATION	38
1	354777-1	WIRE DISC, ASSEMBLY	37
1	22480-5	SPRING, COMPRESSION	36
1	690212-1	POST, RAM	35
1	690786-3	TERMINAL SUPPORT	34
2	2-21002-4	SCR, BTN SKT HD CAP 8-32 X .750	33
1	21024-5	WASHER, SPRG LOCK, REG NO 10	32
1	3-21000-4	SCR, SKT HD CAP 10-32 X .375	31
1	1-1320908-5	SPACER, STRIP GUIDE	30
1	1633091-1	ASSEMBLY, STRIP GUIDE	29
1	1-455888-0	SPACER, CRIMPER	28
1	1320928-1	PLATE, STRIP GUIDE	24
1	690472-2	STRIPPER	22
1	2-21000-7	SCR, SKT HD CAP 8-32 X .500	21
4	21024-4	WASHER, SPRG LOCK, REG NO 8	20
1	691353-1	STRIPPER	19
1	679625-1	SHEAR HOLDER, FRONT (NO CUT)	17
1	3-22280-3	SPRING, COMPRESSION	12
1	690461-1	STOP, SHEAR	11
1	690459-1	SHEAR HOLDER, FRONT	10
1	454276-1	FLOATING SHEAR, FRONT	9
1	6-1633117-7	ANVIL, COMBINATION	8
1	240641-5	SPACER	7
1	1-455889-4	DEPRESSOR, SHEAR	5
1	238011-7	BLOCK, CRIMPER SPACER	4
1	4-456134-3	CRIMPER, INSULATION F PREMIUM	3
1	1-455888-0	SPACER, CRIMPER	2
1	456410-4	CRIMPER, WIRE PREMIUM	1

DIMENSIONS:		TOLERANCES UNLESS OTHERWISE SPECIFIED:	
INCHES	0 PLC ±.01	1 PLC ±.01	2 PLC ±.01
	3 PLC ±.001	4 PLC ±.001	ANGLES ±.001
	FINISH		

DRN	05JAN2007	APPR	05JAN2007
CHK	T. ELBIN	NAME	T. BENCHOFF
APPR	05JAN2007	PRODUCT SPEC	
		APPLICATION SPEC	
MATERIAL		WEIGHT	
		CUSTOMER DRAWING	

SIZE	CAGE CODE	DRAWING NO	RESTRICTED TO
A	00779	1852391	
SCALE	3:5	SHEET	1 OF 1
REV	A		

CUSTOMER VIEWABLE ASSEMBLY

Mouser Electronics

Authorized Distributor

Click to View Pricing, Inventory, Delivery & Lifecycle Information:

[TE Connectivity:](#)

[1852391-2](#)