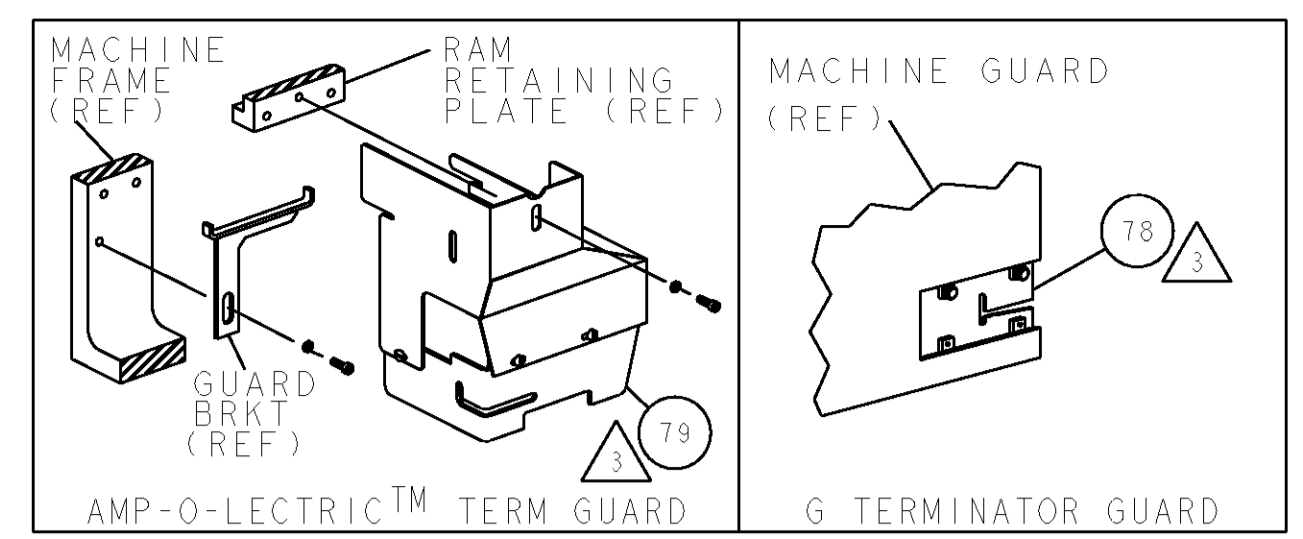


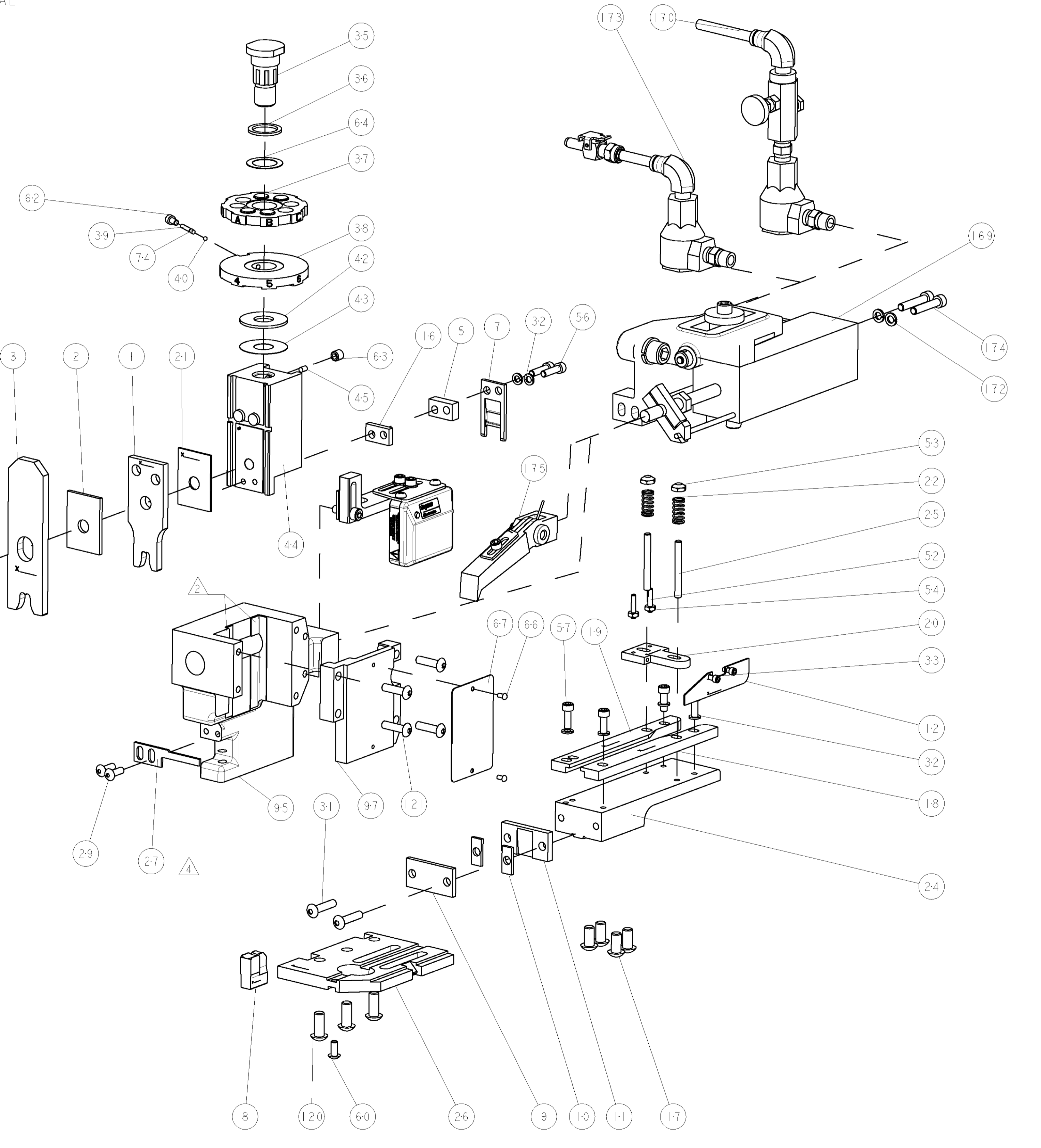
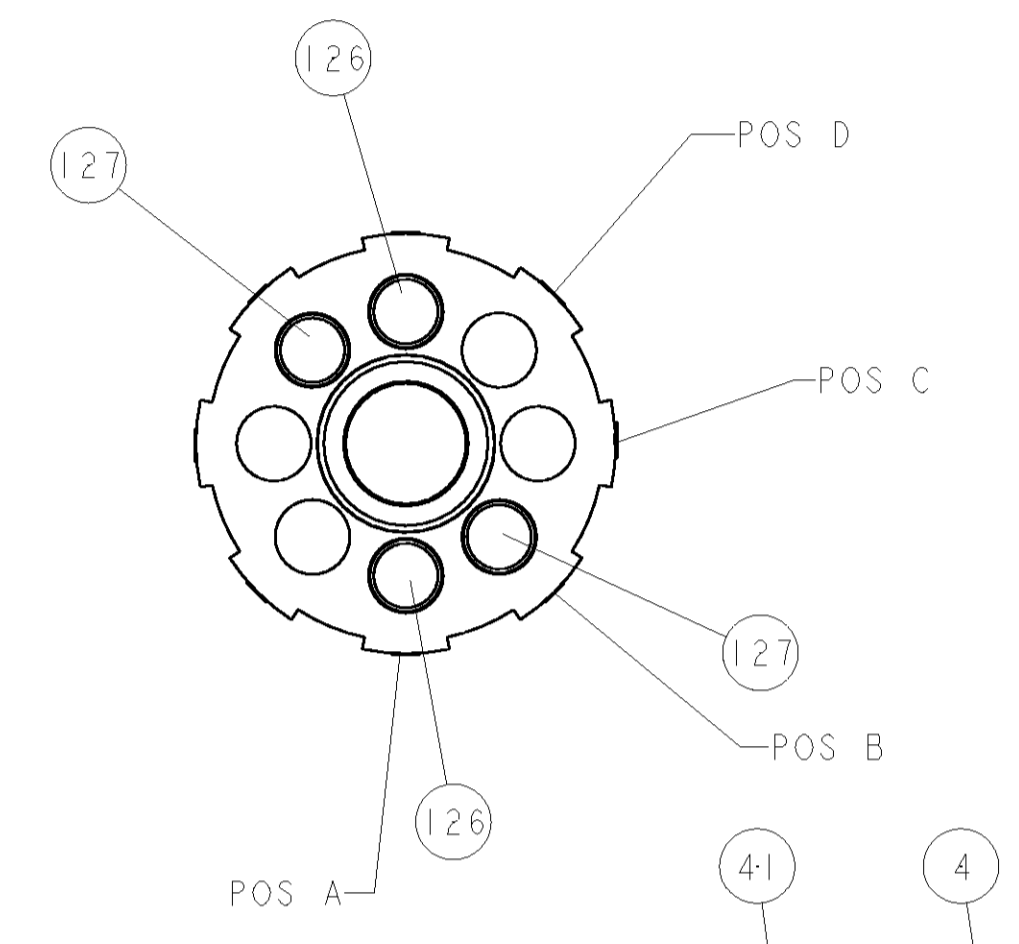
|             |  |     |            |                           |           |
|-------------|--|-----|------------|---------------------------|-----------|
| PART NUMBER |  | REV | FIRST USED | POWER UNIT                | FEED TYPE |
| 1852323-1   |  | A   | 122500-1   | LEADMAKER & BENCH MODEL G | AIR FEED  |
| 1852323-2   |  | A   | 565435-5   | BENCH MODEL K             | AIR FEED  |
| 7-1852323-7 |  | A   | -          | SPARE PARTS               | -         |

- △ RECOMMENDED SPARE PARTS
- ② GREASE LIGHTLY
- ③ GUARD MUST BE IN PLACE WHEN OPERATING APPLICATOR IN A BENCH MACHINE
- ④ INSTALL ITEM 27 UPSIDE DOWN FOR TERMINAL CLEARANCE DURING FEEDING. ADJUST ITEM 27 FOR RAM CLEARANCE.



|                              |                |                                |                         |             |
|------------------------------|----------------|--------------------------------|-------------------------|-------------|
| TERMINAL NAME: RING TERMINAL |                |                                |                         |             |
| TYCO PN                      | MFG PN         | JST TERMINAL - AMP CRIMP SPECS |                         |             |
| 1949128-1                    | 25245.123.011  |                                |                         |             |
|                              |                | PAD LTR                        | CRIMP HEIGHT            | WIRE SIZE   |
| -                            | -              | A                              | 4.45±0.10mm [.175±.004] | 12.00mm     |
| -                            | -              | B                              | 4.35±0.10mm [.171±.004] | 10.00mm     |
| -                            | -              | C                              | -                       | -           |
| -                            | -              | D                              | -                       | -           |
|                              |                | CRIMP                          | SIZE                    | TYPE        |
| -                            | -              | -                              | -                       | -           |
|                              |                | WIRE                           | 6.10mm [.240]           | F 12mm-10mm |
|                              |                | INSUL                          | 8.38mm [.330]           | F Ø.280 max |
| WIRE STRIP LENGTH            | TERM APPL SPEC | FEED                           | APPL INSTRUCTIONS       | SET UP GAGE |
| 7.50mm                       | NONE           | 30.99mm                        | 408-8039                | 458638-1    |

| LOC | DIST | REV | DESCRIPTION | DATE      | DWN | APPR |
|-----|------|-----|-------------|-----------|-----|------|
| A   | 66   |     | RELEASED    | 17OCT2006 | BH  | BH   |



|   |     |     |   |             |  |     |
|---|-----|-----|---|-------------|--|-----|
| - | 1   | 1   | - | 460680-1    | FEED FINGER ASSEMBLY                   | 175 |
| - | 2   | 2   | - | 3-21000-9   | SCR, SKT HD CAP 10-32 X 1.000          | 174 |
| - | -   | 1   | - | 692655-7    | AIR FEED VALVE ASSEMBLY                | 173 |
| - | 2   | 2   | - | 21024-5     | WASHER, SPRG LOCK, REG NO 10           | 172 |
| - | 1   | -   | - | 692655-5    | AIR FEED VALVE ASSEMBLY                | 170 |
| - | 1   | 1   | - | 1-460277-9  | AIR FEED ASSY                          | 169 |
| - | 2   | 2   | - | 4-354778-5  | PIN, WIRE DISC, .2720                  | 127 |
| - | 2   | 2   | - | 4-354778-1  | PIN, WIRE DISC, .2700                  | 126 |
| - | 4   | 4   | - | 2-21002-9   | SCR, BTN SKT HD CAP 10-32 X .750       | 121 |
| - | 3   | 3   | - | 2-22733-8   | SCR, BHSC, SELF-LOCKING, 1/4-20 X .625 | 120 |
| - | 1   | 1   | - | 454220-1    | CAP, RAM                               | 97  |
| - | 1   | 1   | - | 453736-1    | HOUSING, APPLICATOR                    | 95  |
| △ | REF | -   | - | 455745-1    | GUARD WINDOW                           | 79  |
| △ | -   | REF | - | 679532-1    | INSERT, GUARD                          | 78  |
| - | 1   | 1   | - | 690603-1    | SPRING ASSIST AMP-O-MATOR APPLICATOR   | 74  |
| - | 1   | 1   | - | 217238-1    | GENERAL INSTRUCTION PKG                | 72  |
| - | 1   | 1   | - | 4088039     | EF APPL INST 408-8039                  | 71  |
| - | 1   | 1   | - | 461264-1    | PLATE, IDENTIFICATION                  | 67  |
| - | 2   | 2   | - | 21017-2     | SCREW, DRIVE                           | 66  |
| - | 1   | 1   | - | 986950-1    | WASHER, FLAT PRECISION                 | 64  |
| - | 1   | 1   | - | 21009-2     | SCR, SET, SELF LOCKING 1/4-20 X .250   | 63  |
| - | 1   | 1   | - | 23030-1     | SCR, SKT HD CAP 6-32 X .25             | 62  |
| - | 1   | 1   | - | 22733-8     | SCR, BHSC, SELF-LOCKING, 8-32 X .375   | 60  |
| - | 4   | 4   | - | 2-21000-7   | SCR, SKT HD CAP 8-32 X .500            | 57  |
| - | 2   | 2   | - | 2-21000-8   | SCR, SKT HD CAP 8-32 X .625            | 56  |
| - | 2   | 2   | - | 21018-4     | NUT, HEX, REG 4-40                     | 54  |
| - | 2   | 2   | - | 21022-2     | NUT, LOCK, HEX, TORQUE, 8-32           | 53  |
| - | 2   | 2   | - | 2-21006-6   | SCR, SET, CUP POINT 4-40 X .625        | 52  |
| - | 1   | 1   | - | 690191-1    | PLUG, NYLON                            | 45  |
| - | 1   | 1   | - | 1-819307-7  | RAM, SIDE FEED                         | 44  |
| - | 1   | 1   | - | 690125-1    | SHIM SUB-ASSY                          | 43  |
| - | 1   | 1   | - | 690124-5    | WASHER, RAM (.062)                     | 42  |
| - | 1   | 1   | - | 7-21002-9   | SCR, BTN SKT HD CAP 5/16-24 X 1.00     | 41  |
| - | 1   | 1   | - | 23241-6     | BALL, STEEL                            | 40  |
| - | 1   | 1   | - | 690170-1    | SPRING, COMPRESSION                    | 39  |
| - | 1   | 1   | - | 690142-1    | DISC, INSULATION                       | 38  |
| - | 1   | 1   | - | 354777-1    | WIRE DISC, ASSEMBLY                    | 37  |
| - | 1   | 1   | - | 22480-5     | SPRING, COMPRESSION                    | 36  |
| - | 1   | 1   | - | 690212-1    | POST, RAM                              | 35  |
| - | 2   | 2   | - | 1-21000-3   | SCR, SKT HD CAP 4-40 X .250            | 33  |
| - | 6   | 6   | - | 21024-4     | WASHER, SPRG LOCK, REG NO 8            | 32  |
| - | 2   | 2   | - | 3-21002-0   | SCR, BTN SKT HD CAP 10-32 X .875       | 31  |
| - | 2   | 2   | - | 2-21002-2   | SCR, BTN SKT HD CAP 8-32 X .500        | 29  |
| △ | 1   | 1   | - | 690455-2    | STRIPPER, FRONT CASTING                | 27  |
| - | 1   | 1   | - | 455676-1    | PLATE, BASE                            | 26  |
| - | 2   | 2   | - | 22354-8     | STUD, THREADED                         | 25  |
| - | 1   | 1   | - | 455678-1    | PLATE, STRIP GUIDE                     | 24  |
| - | 2   | 2   | - | 2-22281-3   | SPRING, COMPRESSION                    | 22  |
| - | 1   | 1   | - | 455888-9    | SPACER, CRIMPER                        | 21  |
| - | 1   | 1   | - | 464451-1    | ARM, STOCK DRAG                        | 20  |
| - | 1   | 1   | - | 5-458030-8  | STRIP GUIDE, REAR                      | 19  |
| - | 1   | 1   | - | 5-458031-9  | STRIP GUIDE, FRONT                     | 18  |
| - | 4   | 4   | - | 3-21002-3   | SCR, BTN SKT HD CAP 1/4-20 X .500      | 17  |
| - | 1   | 1   | - | 2-240641-4  | SPACER                                 | 16  |
| - | 1   | 1   | - | 1-464452-3  | DRAG, STOCK                            | 12  |
| △ | 1   | 1   | - | 240644-1    | PLATE, REAR SHEAR                      | 11  |
| △ | 2   | 2   | - | 240645-8    | SPACER, SHEAR PLATE                    | 10  |
| △ | 1   | 1   | - | 240642-1    | PLATE, FRONT SHEAR                     | 9   |
| △ | 1   | 1   | - | 1633498-1   | ANVIL, COMBINATION                     | 8   |
| △ | 1   | 1   | - | 690474-6    | BLADE, SLUG                            | 7   |
| - | 1   | 1   | - | 2-240641-5  | SPACER                                 | 5   |
| - | 1   | 1   | - | 3-238009-0  | BLOCK, FL CRIMPER SPACER               | 4   |
| △ | 1   | 1   | - | 2-1633471-0 | CRIMPER, INSULATION F                  | 3   |
| △ | 1   | 1   | - | 2-455888-1  | SPACER, CRIMPER                        | 2   |
| △ | 1   | 1   | - | 3-1673600-8 | CRIMPER, WIRE                          | 1   |

|                    |     |  |  |                           |  |                           |  |                           |  |                               |  |
|--------------------|-----|--|--|---------------------------|--|---------------------------|--|---------------------------|--|-------------------------------|--|
| DIMENSIONS: INCHES |     | TOLERANCES UNLESS OTHERWISE SPECIFIED: |  | DWG: B. HIGMAN 19SEPT2006 |  | CHK: B. HIGMAN 19SEPT2006 |  | APPR: J. ELBIN 19SEPT2006 |  | NAME: END FEED HDM APPLICATOR |  |
| 0                  | PLC | ±                                      |  | TYCO                      |  | Tyco Electronics          |  | Harrisburg, PA 17105-3608 |  | RESTRICTED TO                 |  |
| 1                  | PLC | ±0.1                                   |  | ELECTRONICS               |  | Harrisburg, PA 17105-3608 |  | SCALE: 3:5                |  | SHEET 1 OF 1                  |  |
| 2                  | PLC | ±0.01                                  |  | CUSTOMER DRAWING          |  | SCALE: 3:5                |  | SHEET 1 OF 1              |  | REV A                         |  |
| 3                  | PLC | ±0.001                                 |  | CUSTOMER DRAWING          |  | SCALE: 3:5                |  | SHEET 1 OF 1              |  | REV A                         |  |
| 4                  | PLC | ±0.0001                                |  | CUSTOMER DRAWING          |  | SCALE: 3:5                |  | SHEET 1 OF 1              |  | REV A                         |  |
| MATERIAL           |     | FINISH                                 |  | WEIGHT                    |  | CAGE CODE                 |  | DRAWING NO                |  | CUSTOMER DRAWING              |  |
|                    |     |  |  |                           |  | A1 00779                  |  | C=1852323                 |  |                               |  |

# Mouser Electronics

Authorized Distributor

Click to View Pricing, Inventory, Delivery & Lifecycle Information:

[TE Connectivity:](#)

[1852323-1](#)