

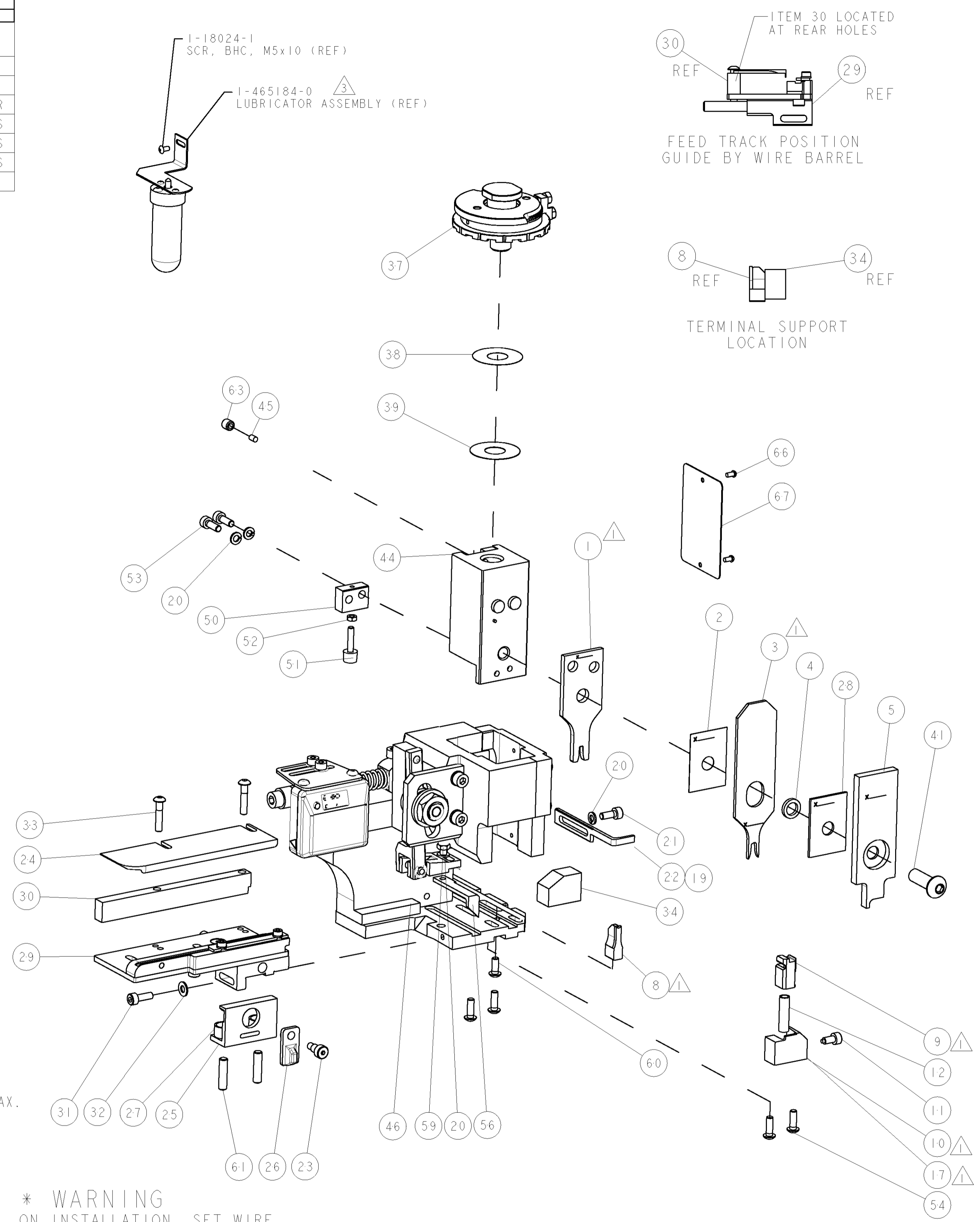
PART NUMBER	REV	TERMINATOR	FEED TYPE	DESCRIPTION
1528644-1	A	LEADMAKER	MECH POST FEED	CUTS CARRIER
1528644-2	A	BENCH	MECH PRE FEED	CUTS CARRIER
1528644-6	A	LEADMAKER	MECH POST FEED	CONTINUOUS CARRIER
7-1528644-1	A	LEADMAKER	MECH POST FEED	-1 AND SPARE PARTS
7-1528644-2	A	BENCH	MECH PRE FEED	-2 AND SPARE PARTS
7-1528644-6	A	LEADMAKER	MECH POST FEED	-6 AND SPARE PARTS
7-1528644-7	A	-	-	SPARE PARTS KIT

WIRE	SIZE	TYPE	RANGE
WIRE	2.54 [1.00 IN]	F	1.50mm ² -2.50mm ²
INSUL	3.68 [1.45 IN]	OV	1.90-2.90 [0.75-1.14 IN]

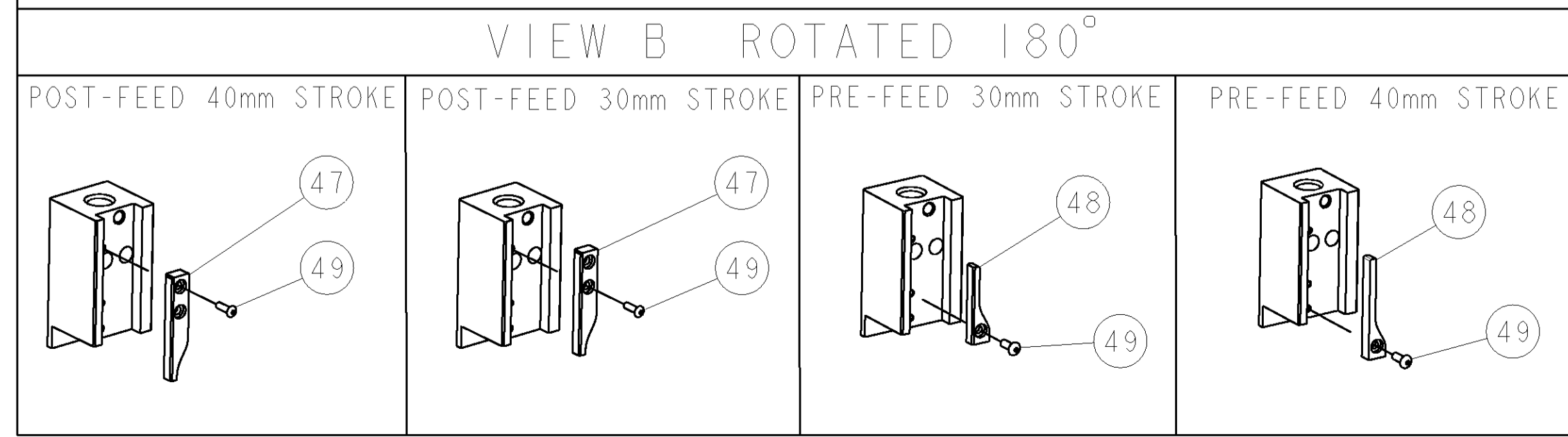
TERMINAL APPL SPEC	LEARN CRIMP DATA SHEETS	FEED
26657 & 26705		11.68 [4.60 IN]

TYCO PN	MANUF'S PN	TYCO PN	MANUF'S PN
1949035-1	26705.201.185	1949034-1	26657.330.185
1949035-2	26705.201.702	1949034-2	26657.201.142
-	-	1949034-3	26657.201.702

WIRE SIZE	CRIMP HEIGHT	REF SETTING
2.50mm ²	1.70 ±0.05 [0.67 ±0.02 IN]	C3
2.25mm ²	1.60 ±0.05 [0.63 ±0.02 IN]	D0
1.50mm ²	1.45 ±0.05 [0.57 ±0.02 IN]	E0



*** WARNING**
 ON INSTALLATION, SET WIRE DISC TO LARGEST WIRE SIZE SETTING. USE OF SETTINGS BELOW MIN. REQUIRED CRIMP HEIGHT SETTING WILL CAUSE DAMAGE TO CRIMP TOOLING.



-77	-76	-72	-71	-6	-2	-1	PART NO	DESCRIPTION	ITEM NO
-	-	-	-	-	-	-	-	-	84
-	-	-	-	-	-	-	-	-	83
-	-	-	-	-	-	-	-	-	82
-	-	-	-	-	-	-	-	-	81
-	-	-	-	-	-	-	-	-	80
-	-	-	-	-	-	-	-	-	79
-	-	-	-	-	-	-	-	-	78
-	-	-	-	-	-	-	-	-	77
-	-	-	-	-	-	-	-	-	76
-	-	-	-	-	-	-	-	-	75
-	-	-	-	-	-	-	-	-	74

LOC	DIST	REV	DATE	BY	APPV
A	66		11JUL2006	DP	MC
		A	SEE ECO-06-016516		
		A1	SEE ECR-07-005916		

REV	DATE	DESCRIPTION	BY	APPV
73				
72				
71	1338705-3	DOCUMENTATION PACKAGE		
70				
69				
68				
67	461264-5	PLATE, IDENTIFICATION		
66	21017-2	SCREW, DRIVE		
65				
64				
63	3-18031-0	SCR, SET, CUP POINT M6 X 6.0		
62				
61	2-18032-5	SCR, SET, FLT POINT M5 X 20.0		
60	18024-7	SCR, BTN SKT HD CAP (M4 X 10.0)		
59	5-18022-2	SCR, HEX HD CAP M4 X 8.0		
58				
57				
56	1338685-1	PAWL, FEED		
55				
54	18024-8	SCR, BTN SKT HD CAP (M4 X 12.0)		
53	1-18023-2	SCR, SKT HD CAP M4 X 12.0		
52	18030-1	NUT, HEX, REG M3		
51	811242-5	BUMPER, HOLD DOWN		
50	690753-2	SPACER, TONKER		
49	18024-3	SCR, BTN SKT HD CAP (M3 X 10.0)		
48	1338675-1	CAM, UNIVERSAL PRE FEED		
47	1338676-1	CAM, UNIVERSAL POST-FEED		
46	1320999-3	APPLICATOR SUBASSEMBLY, HDI		
45	690191-1	PLUG, NYLON		
44	1338660-1	RAM		
43				
42				
41	2-18024-6	SCR, BTN SKT HD CAP (M8 X 25.0)		
40				
39	690125-1	SHIM SUB-ASSY		
38	469367-2	SHIM		
37	879103-2	FINE ADJUST HEAD SUBASSY		
36				
35				
34	3-1320934-0	SUPPORT, TERMINAL		
33	1-18024-0	SCR, BTN SKT HD CAP (M4 X 20.0)		
32	18027-2	WASHER, FLAT, REG M4		
31	1-18023-2	SCR, SKT HD CAP M4 X 12.0		
30	1320908-8	SPACER, STRIP GUIDE		
29	1633073-2	STRIP GUIDE ASSEMBLY		
28	1-455888-2	SPACER, CRIMPER		
27	1-22284-0	SPRING, COMPRESSION		
26	356835-1	LEVER, DRAG RELEASE		
25	240792-1	DRAG, TERMINAL		
24	1320928-1	PLATE, STRIP GUIDE		
23	980371-4	SCR, SKT HD SHLDR 5.0 DIA X 6.0		
22	690472-2	STRIPPER		
21	1-18023-1	SCR, SKT HD CAP M4 X 10.0		
20	18025-2	WASHER, SPRG LOCK, REG M4		
19	690472-1	STRIPPER		
18				
17	1338684-1	HOLDER, SHEAR, NO-CUT		
16				
15				
14				
13				
12	3-22280-3	SPRING, COMPRESSION		
11	356885-4	STOP, SHEAR		
10	1320921-1	SHEAR HOLDER, FRONT, CUT		
9	454276-1	FLOATING SHEAR, FRONT		
8	1-1633133-0	ANVIL, COMBINATION .100		
7				
6				
5	3-455889-6	DEPRESSOR, SHEAR		
4	2-238011-2	BLOCK, CRIMPER SPACER		
3	2-854830-2	CRIMPER, INSULATION SPECIAL		
2	455888-1	SPACER, CRIMPER		
1	2-456407-2	CRIMPER, WIRE PREMIUM		

REV	DATE	DESCRIPTION	BY	APPV					
77	-76	-72	-71	-6	-2	-1	PART NO	DESCRIPTION	ITEM NO

DIMENSIONS:	TOLERANCES UNLESS OTHERWISE SPECIFIED:
mm [IN]	0 PLC ±
	1 PLC ±
	2 PLC ±
	3 PLC ±
	4 PLC ±
	ANGLES ±

MATERIAL	FINISH	WEIGHT	SCALE	SHEET	OF	REV
			3:5	1	1	A1

TYCO	DESCRIPTION	DATE	BY	APPV
TYCO ELECTRONICS	FINE ADJUST SIDE FEED HDI APPLICATOR	11JUL2006	DP	MC

Mouser Electronics

Authorized Distributor

Click to View Pricing, Inventory, Delivery & Lifecycle Information:

[TE Connectivity:](#)

[1528644-6](#)