

4

3

2

1

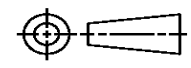
THIS DRAWING IS UNPUBLISHED. RELEASED FOR PUBLICATION
© COPYRIGHT ALL RIGHTS RESERVED.

LOC	DIST	REVISIONS			
P	LTR	DESCRIPTION	DATE	DWN	APVD
	A1	ECR-14-003322	10MAR2014	GK	HMR

REPLACED BY OCEAN STYLE APPLICATOR PART NUMBER 2266147-1

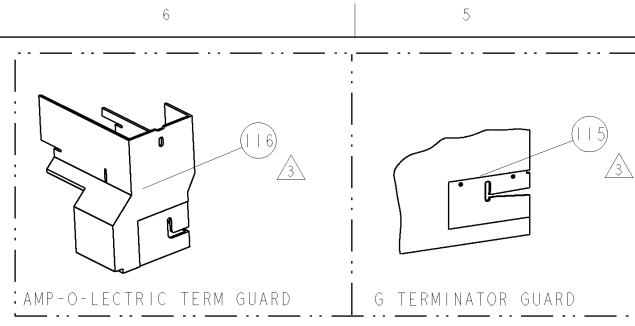
FOR REPLACEMENT PARTS FOR APPLICATOR 1855409
REFER TO ADDITIONAL PAGE(S). SPARE PARTS KIT (IF LISTED)
WILL REMAIN AVAILABLE.

THE REPLACEMENT OCEAN STYLE APPLICATOR HAS THE
SAME TERMINATOR/PRESS INTERFACE AS APPLICATOR
1855409

THIS DRAWING IS A CONTROLLED DOCUMENT.		DWN	GOPALAKRISHNA HV		
DIMENSIONS:		CHK	RAGHAVENDRA		
		APVD	RAGHAVENDRA		
TOLERANCES UNLESS OTHERWISE SPECIFIED:		PRODUCT SPEC	NAME		
0 PLC	±	APPLICATION SPEC	FINE ADJUST SIDE FEED HDM APPLICATOR		
1 PLC	±		SIZE	CAGE CODE	DRAWING NO
2 PLC	±		A3		©- 1855409
3 PLC	±				RESTRICTED TO
4 PLC	±				
ANGLES	±	WEIGHT			
MATERIAL	FINISH	CUSTOMER DRAWING	SCALE	SHEET 1 OF 2	REV A1



PART NUMBER	REV	FIRST USED	POWER UNIT	FEED TYPE	DESCRIPTION
1855409-1	A	122500-1	LEADMAKER	POST FEED	CUTS CARRIER
1855409-2	A	565435-5	BENCH MODEL K	PRE FEED	CUTS CARRIER
1855409-3	A	354500-1	BENCH MODEL G	PRE FEED	CUTS CARRIER
1855409-6	A	122500-1	LEADMAKER	POST FEED	CONTINUOUS CARRIER
7-1855409-7	A	-	-	-	SPARE PARTS

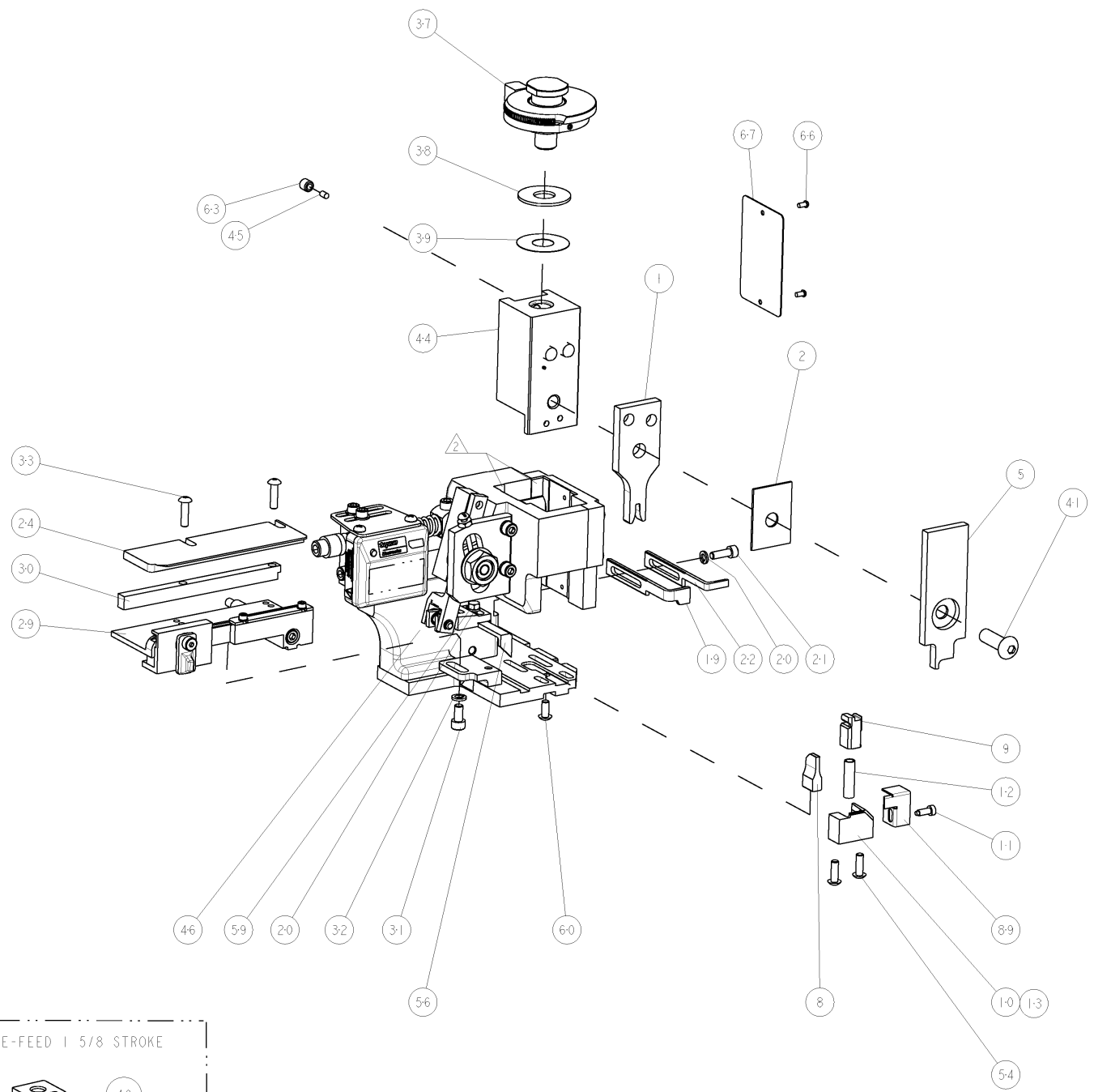
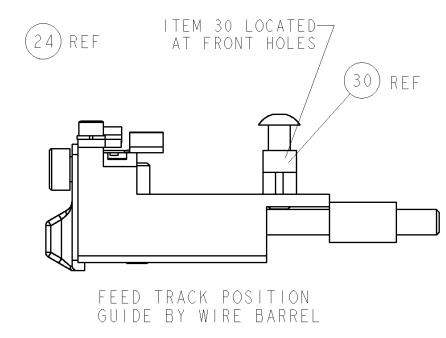


TE PN		MANF PN		GROTE & HARTMANN TERMINAL - TE CRIMP SPECS		REF SETTING	
1949691	25768.123.178						
				CRIMP HEIGHT	WIRE SIZE		
				.080+.002/- .002 [2.03mm+.05/- .05]	14AWG or 2.5mm2	B8	
				.074+.002/- .002 [1.88mm+.05/- .05]	16AWG or 2mm2	D0	
				.068+.002/- .002 [1.73mm+.05/- .05]	18AWG or 1.5mm2	E1	
				CRIMP	SIZE	TYPE	RANGE
				WIRE	.100 [2.54mm]	F	1.50-2.5mm
				INSUL	.100 [2.54mm]	O	Ø .080 MAX
WIRE STRIP LENGTH	TERM APPL SPEC	FEED	APPLICATOR INSTRUCTIONS	SET UP GAGE			
.265-.280	NONE	.384	408-8040	458637-1			

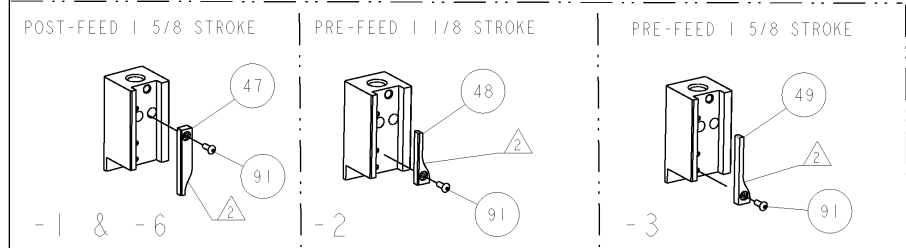
LOC	DIST	REV	DESCRIPTION	DATE	DNW	APVD
A	66		PRODUCT RELEASE	27JUN2008	CMR	GB

- △ RECOMMENDED SPARE PARTS
- △ GREASE LIGHTLY
- △ GUARD MUST BE IN PLACE WHEN OPERATING APPLICATOR IN A BENCH MACHINE

*** WARNING**
ON INSTALLATION, SET WIRE DISC TO LARGEST WIRE SIZE SETTING. USE OF SETTINGS BELOW MIN. REQUIRED CRIMP HEIGHT SETTING WILL CAUSE DAMAGE TO CRIMP TOOLING.



△	-	-	REF	-	455749-1	GUARD WINDOW	116
△	-	-	REF	-	679532-1	INSERT, GUARD	115
	-	1	1	1	1-21002-7	SCR, BTN SKT HD CAP 6-32 X .375	91
	-	1	1	1	318563-1	GUARD, FRONT CHIP	89
	-	1	1	1	4088040	SF APPL INST 408-8040	72
	-	1	1	1	217238-1	GENERAL INSTRUCTION PKG	71
	-	1	1	1	461264-5	PLATE, IDENTIFICATION	67
	-	2	2	2	21017-2	SCREW, DRIVE	66
	-	1	1	1	21009-2	SCR, SET, SELF LOCKING 1/4-20 X .250	63
	-	1	1	1	22733-8	SCR, BHSC, SELF-LOCKING, 8-32 X .375	60
	-	1	1	1	2-22603-0	SCR, HEX HD CAP 8-32 X .312	59
	-	1	1	1	458537-2	PAWL, FEED	56
	-	2	2	2	2-21002-2	SCR, BTN SKT HD CAP 8-32 X .500	54
	-	-	1	-	690602-6	CAM, PRE FEED, 1 5/8	49
	-	-	1	-	690602-5	CAM, PRE FEED, 1 1/8	48
	-	-	-	-	690501-4	CAM, POST FEED, 1 5/8	47
	-	1	1	1	459456-1	APPL. BASIC SUB ASSY (SIDE WISE MOCA)	46
	-	1	1	1	690191-1	PLUG, NYLON	45
	-	1	1	1	1-455673-5	RAM, SIDE FEED	44
	-	1	1	1	7-21002-9	SCR, BTN SKT HD CAP 5/16-24 X 1.00	41
	-	1	1	1	690125-1	SHIM SUB-ASSY	39
	-	1	1	1	1-469367-4	SHIM	38
	-	1	1	1	879103-4	FINE ADJUST HEAD ASSEMBLY	37
	-	2	2	2	2-21002-3	SCR, BTN SKT HD CAP 8-32 X .625	33
	-	1	1	1	21024-5	WASHER, SPRG LOCK, REG NO 10	32
	-	1	1	1	3-21000-4	SCR, SKT HD CAP 10-32 X .375	31
	-	1	1	1	2-1320908-4	SPACER, STRIP GUIDE	30
	-	1	1	1	1633091-3	ASSEMBLY, STRIP GUIDE	29
	-	1	1	1	8-690440-1	GUIDE, REAR STRIP	24
	-	1	-	-	690472-2	STRIPPER	22
	-	1	1	1	2-21000-7	SCR, SKT HD CAP 8-32 X .500	21
	-	2	2	2	21024-4	WASHER, SPRG LOCK, REG NO 8	20
	-	-	1	-	691353-1	STRIPPER	19
△	-	1	-	-	679625-1	SHEAR HOLDER, FRONT (NO CUT)	13
△	-	1	1	1	3-22280-3	SPRING, COMPRESSION	12
△	-	1	1	1	690461-1	STOP, SHEAR	11
△	-	-	1	-	690459-1	SHEAR HOLDER, FRONT	10
△	-	1	1	1	454276-1	FLOATING SHEAR, FRONT	9
△	1	1	1	1	1633665-2	ANVIL, COMBINATION	8
	-	-	-	-	-	-	7
	-	-	-	-	-	-	6
	-	1	1	1	1-455889-4	DEPRESSOR, SHEAR	5
	-	-	-	-	-	-	4
	-	-	-	-	-	-	3
△	-	1	1	1	1-455888-0	SPACER, CRIMPER	2
△	1	1	1	1	1633664-4	CRIMPER, WIRE	1



DIMENSIONS	TOLERANCES UNLESS OTHERWISE SPECIFIED:	APVD	DATE	NAME	PRODUCT SPEC	SIZE	CASE CODE	DRAWING NO	RESTRICTED TO
INCHES	0 PLC ±.010 1 PLC ±.010 2 PLC ±.010 3 PLC ±.001 4 PLC ±.0001	C. REICHELDERFER	03JUNE2008	ELBLIN		A1	00779	1855409	
MATERIAL	FINISH	WEIGHT	CUSTOMER DRAWING		SCALE 3:5		SHEET 1 OF 1		REV A

Mouser Electronics

Authorized Distributor

Click to View Pricing, Inventory, Delivery & Lifecycle Information:

[TE Connectivity:](#)

[1855409-3](#)