

4

3

2

1


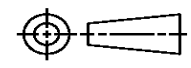
THIS DRAWING IS UNPUBLISHED. RELEASED FOR PUBLICATION
© COPYRIGHT ALL RIGHTS RESERVED.

LOC		DIST		REVISIONS			
P	LTR	DESCRIPTION		DATE	DWN	APVD	
	A1	ECR-13-019318		10JAN2014	RS	LZ	

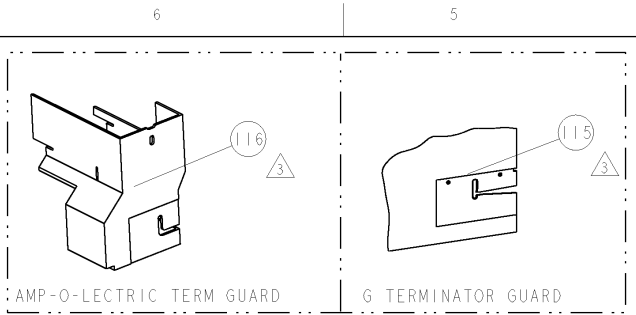
REPLACED BY OCEAN STYLE APPLICATOR PART NUMBER 2151267-1

FOR REPLACEMENT PARTS FOR APPLICATOR 1855402 REFER TO ADDITIONAL PAGE(S). SPARE PARTS KIT (IF LISTED) WILL REMAIN AVAILABLE.

THE REPLACEMENT OCEAN STYLE APPLICATOR HAS THE SAME TERMINATOR/PRESS INTERFACE AS APPLICATOR 1855402

THIS DRAWING IS A CONTROLLED DOCUMENT.		DWN	R.SHEN		 TE Connectivity		
DIMENSIONS:		CHK	LJ. ZHANG				
		TOLERANCES UNLESS OTHERWISE SPECIFIED:		NAME			
		0 PLC ±		FINE ADJUST SIDE FEED HDM APPLICATOR			
MATERIAL		FINISH		APVD	U. GUO		
				PRODUCT SPEC			
				APPLICATION SPEC			
				SIZE	CAGE CODE	DRAWING NO	RESTRICTED TO
				A3		©- 1855402	
CUSTOMER ACCESSIBLE PRODUCTION DRAWING				SCALE	SHEET 1 OF 2	REV A1	

PART NUMBER	REV	FIRST USED	POWER UNIT	FEED TYPE	DESCRIPTION
1855402-1	A	122500-1	LEADMAKER	POST FEED	CUTS CARRIER
1855402-2	A	565435-5	BENCH MODEL K	PRE FEED	CUTS CARRIER
1855402-3	A	354500-1	BENCH MODEL G	PRE FEED	CUTS CARRIER
1855402-6	A	122500-1	LEADMAKER	POST FEED	CONTINUOUS CARRIER
7-1855402-7	A	-	-	-	SPARE PARTS

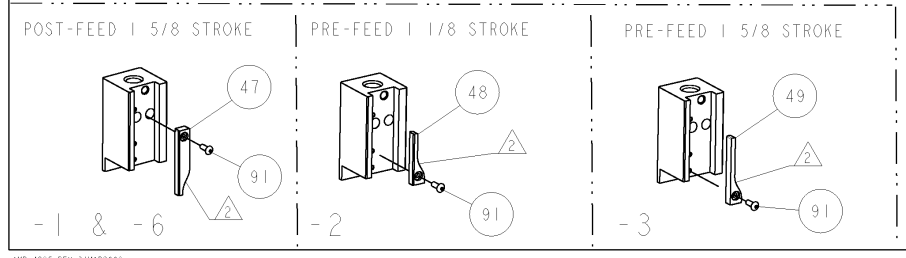
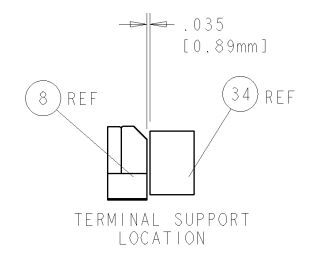
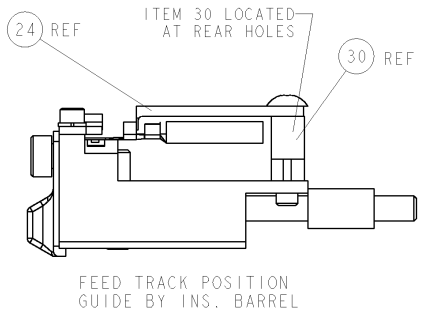
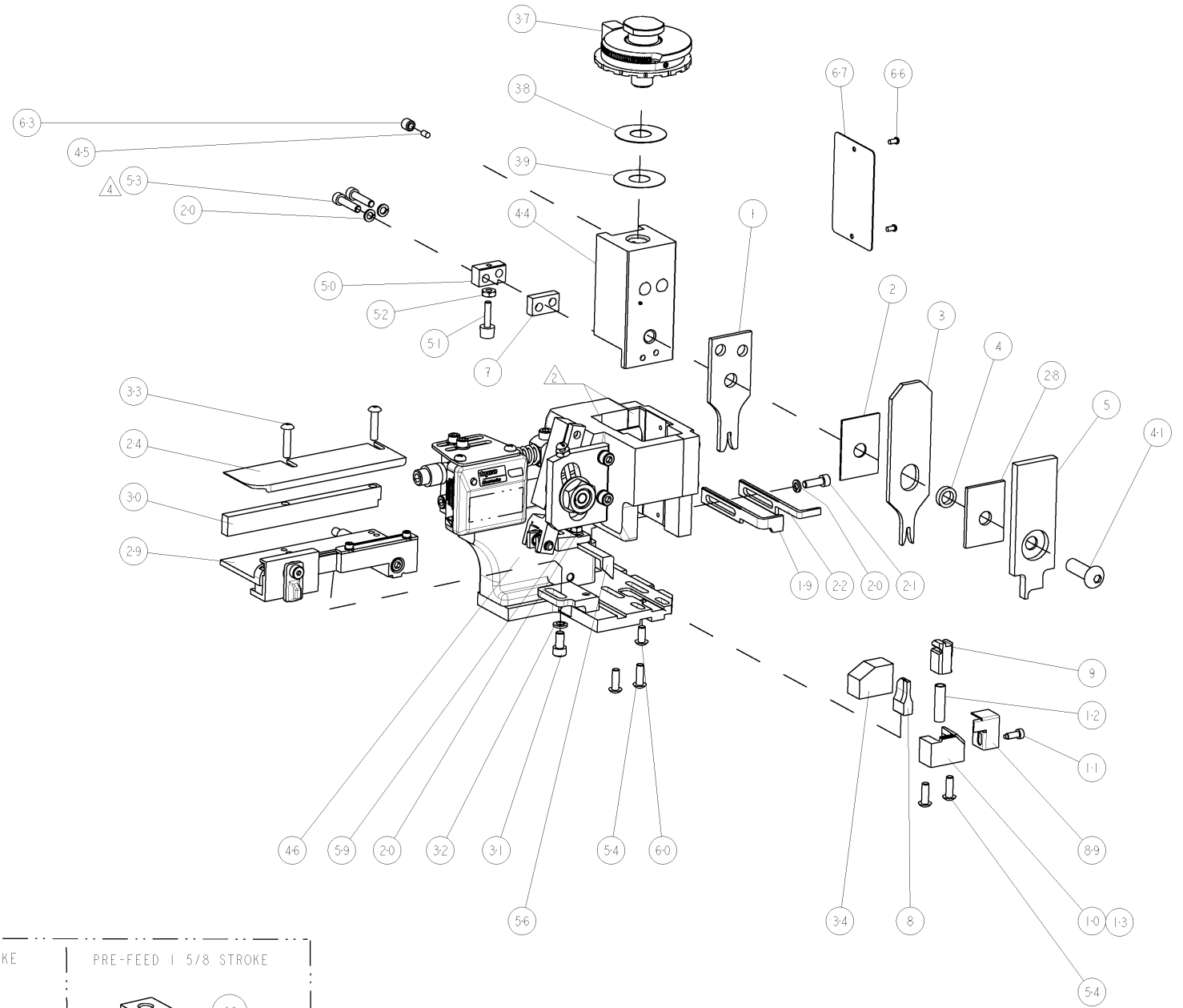


TERMINAL NAME: TAB2.8X0.8			
SOCKET	PIN	TE TERMINAL - TE CRIMP SPECS	
-	962841		
-	-	CRIMP HEIGHT	WIRE SIZE
-	-	1.36mm+.05/- .05 [.054+.002/- .002]	1mm2
-	-	1.27mm+.05/- .05 [.050+.002/- .002]	0.75mm2
-	-	1.18mm+.05/- .05 [.046+.002/- .002]	0.5mm2
-	-	-	-
-	-	CRIMP	SIZE
-	-	WIRE	2.05mm [.081]
-	-	INSUL	2.55mm [.100]
-	-	FEED	1.4.50
-	-	APPLICATOR INSTRUCTIONS	408-8040
-	-	SET UP GAGE	458637-1

LOC	DIST	REVISIONS			
A	66	REV	DESCRIPTION	DATE	DWN
		A	RELEASED	21MAY2008	LG

- △ RECOMMENDED SPARE PARTS
- △ GREASE LIGHTLY
- △ GUARD MUST BE IN PLACE WHEN OPERATING APPLICATOR IN A BENCH MACHINE
- △ CUT TO LENGTH AT ASSEMBLY.

*** WARNING**
ON INSTALLATION, SET WIRE DISC TO LARGEST WIRE SIZE SETTING. USE OF SETTINGS BELOW MIN. REQUIRED CRIMP HEIGHT SETTING WILL CAUSE DAMAGE TO CRIMP TOOLING.



QTY	REF	DESCRIPTION	ITEM NO
-	-	455749-1 GUARD WINDOW	116
-	REF	679532-1 INSERT, GUARD	115
-	1	1-21002-7 SCR, BTN SKT HD CAP 6-32 X .375	91
-	1	318563-1 GUARD, FRONT CHIP	89
-	1	4088040 SF APPL INST 408-8040	72
-	1	217238-1 GENERAL INSTRUCTION PKG	71
-	1	461264-5 PLATE, IDENTIFICATION	67
-	2	21017-2 SCREW, DRIVE	66
-	1	21009-2 SCR, SET, SELF LOCKING 1/4-20 X .250	63
-	1	22733-8 SCR, BHSC, SELF-LOCKING, 8-32 X .375	60
-	1	2-22603-0 SCR, HEX HD CAP 8-32 X .312	59
-	1	458537-2 PAWL, FEED	56
-	4	2-21002-2 SCR, BTN SKT HD CAP 8-32 X .500	54
-	2	2-21000-9 SCR, SKT HD CAP 8-32 X .750	53
-	1	21018-5 NUT, HEX, REG 6-32	52
-	1	811242-2 BUMPER, HOLD DOWN	51
-	1	690753-1 SPACER, TONKER	50
-	-	690602-6 CAM, PRE FEED, 1 5/8	49
-	-	690602-5 CAM, PRE FEED, 1 1/8	48
-	-	690501-4 CAM, POST FEED, 1 5/8	47
-	1	459456-2 APPL, BASIC SUB ASSY (SIDE WISE MQCA)	46
-	1	690191-1 PLUG, NYLON	45
-	1	455673-1 RAM, SIDE FEED	44
-	1	7-21002-9 SCR, BTN SKT HD CAP 5/16-24 X 1.00	41
-	1	690125-1 SHIM SUB-ASSY	39
-	1	1-469367-0 SHIM	38
-	1	879103-2 FINE ADJUST HEAD ASSEMBLY	37
-	1	690786-4 TERMINAL SUPPORT	34
-	2	2-21002-4 SCR, BTN SKT HD CAP 8-32 X .750	33
-	1	21024-5 WASHER, SPRG LOCK, REG NO 10	32
-	1	3-21000-4 SCR, SKT HD CAP 10-32 X .375	31
-	1	1-1320908-5 SPACER, STRIP GUIDE	30
-	1	1633091-4 ASSEMBLY, STRIP GUIDE	29
-	1	1-455888-9 SPACER, CRIMPER	28
-	1	1320928-1 PLATE, STRIP GUIDE	24
-	1	690472-2 STRIPPER	22
-	1	2-21000-7 SCR, SKT HD CAP 8-32 X .500	21
-	4	21024-4 WASHER, SPRG LOCK, REG NO 8	20
-	-	691353-1 STRIPPER	19
-	1	679625-5 SHEAR HOLDER, FRONT (NO CUT)	13
-	1	3-22280-3 SPRING, COMPRESSION	12
-	1	690461-1 STOP, SHEAR	11
-	1	690459-5 SHEAR HOLDER, FRONT	10
-	1	454276-8 FLOATING SHEAR, FRONT	9
-	1	5-662186-1 ANVIL, COMBINATION	8
-	1	1-240641-8 SPACER	7
-	-	-	6
-	1	1-455889-4 DEPRESSOR, SHEAR	5
-	1	238011-2 BLOCK, CRIMPER SPACER	4
-	1	4-456135-8 CRIMPER, INSULATION 0 PREMIUM	3
-	1	455888-8 SPACER, CRIMPER	2
-	1	1-456405-5 CRIMPER, WIRE PREMIUM	1

DIMENSIONS		TOLERANCES UNLESS OTHERWISE SPECIFIED		DRAWN	
INCHES		PLC ±.01		GROSS 12MAY2008	
MATERIAL		PLC .001		CHK G. BAILEY 12MAY2008	
FINISH		PLC .0001		APPV N. DEMING 12MAY2008	
CUSTOMER DRAWING		APPLICATOR INSTRUCTIONS 408-8040		NAME FINE ADJUST SIDE FEED HDM APPLICATOR	
SCALE 3:5		WEIGHT		SIZE CARE CODE DRAWING NO. RESTRICTED TO	
SHEET 1 OF 1		CUSTOMER DRAWING		A 00779 1855402	

CUSTOMER VIEWABLE ASSEMBLY

Mouser Electronics

Authorized Distributor

Click to View Pricing, Inventory, Delivery & Lifecycle Information:

[TE Connectivity:](#)

[1855402-3](#)