

4

3

2

1

THIS DRAWING IS UNPUBLISHED.

RELEASED FOR PUBLICATION

© COPYRIGHT

ALL RIGHTS RESERVED.

LOC DIST

REVISIONS

P	LTR	DESCRIPTION	DATE	DWN	APVD

REPLACED BY OCEAN STYLE APPLICATOR PART NUMBER

FOR REPLACEMENT PARTS FOR APPLICATOR REFER TO ADDITIONAL PAGE(S). SPARE PARTS KIT (IF LISTED) WILL REMAIN AVAILABLE.

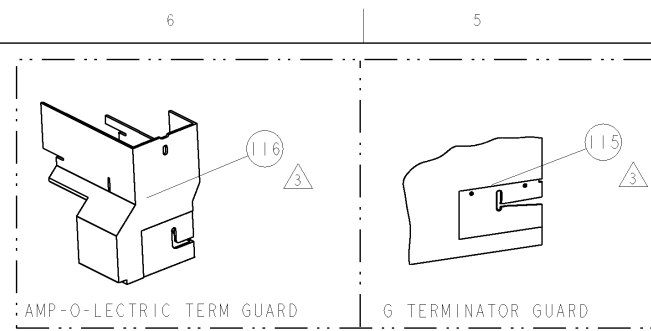
THE REPLACEMENT OCEAN STYLE APPLICATOR HAS THE SAME TERMINATOR/PRESS INTERFACE AS APPLICATOR

THIS DRAWING IS A CONTROLLED DOCUMENT.		DWN	 TE Connectivity		
DIMENSIONS:		CHK			
TOLERANCES UNLESS OTHERWISE SPECIFIED:		APVD	NAME		
 0 PLC ± 1 PLC ± 2 PLC ± 3 PLC ± 4 PLC ± ANGLES ±		PRODUCT SPEC	RESTRICTED TO		
		APPLICATION SPEC	SIZE	CAGE CODE	DRAWING NO
MATERIAL	FINISH	WEIGHT	A3	C-	
		SCALE	SHEET	OF	REV

PART NUMBER	REV	FIRST USED	POWER UNIT	FEED TYPE	DESCRIPTION
1855284-1	A	122500-1	LEADMAKER	POST FEED	CUTS CARRIER
1855284-2	A	565435-5	BENCH MODEL K	PRE FEED	CUTS CARRIER
1855284-3	A	354500-1	BENCH MODEL G	PRE FEED	CUTS CARRIER
1855284-6	A	122500-1	LEADMAKER	POST FEED	CONTINUOUS CARRIER
7-1855284-7	A	-	-	-	SPARE PARTS

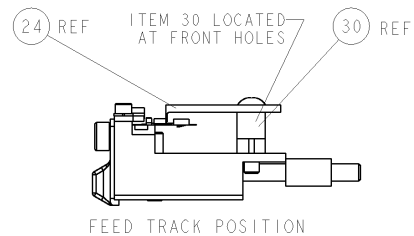
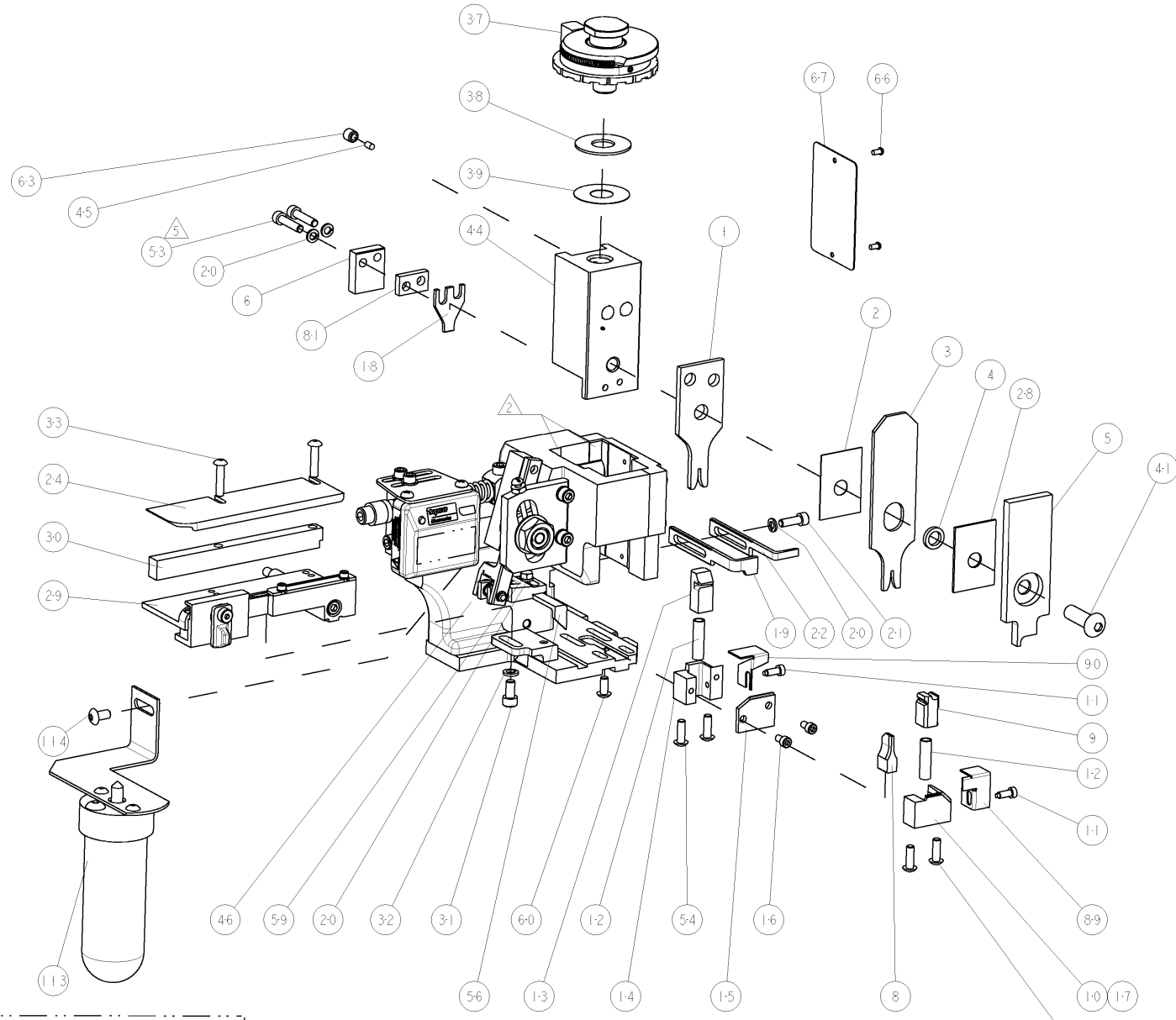
- △ RECOMMENDED SPARE PARTS
- △ GREASE LIGHTLY
- △ GUARD MUST BE IN PLACE WHEN OPERATING APPLICATOR IN A BENCH MACHINE
- △ MAXIMUM DIAMETER SHALL BE 1.75mm [.069] WHEN USED IN 15.24mm [.600] HIGH HOUSINGS, AND 1.4mm [.055] WHEN USED IN 15.38mm [.645] HIGH HOUSINGS, OR 13.84mm [.545] HIGH HOUSINGS.
- △ CUT AT ASSEMBLY.

*** WARNING**
ON INSTALLATION, SET WIRE SIZE DISC TO LARGEST WIRE SIZE SETTING. USE OF SETTINGS BELOW MIN. REQUIRED CRIMP HEIGHT SETTING WILL CAUSE DAMAGE TO CRIMP TOOLING.

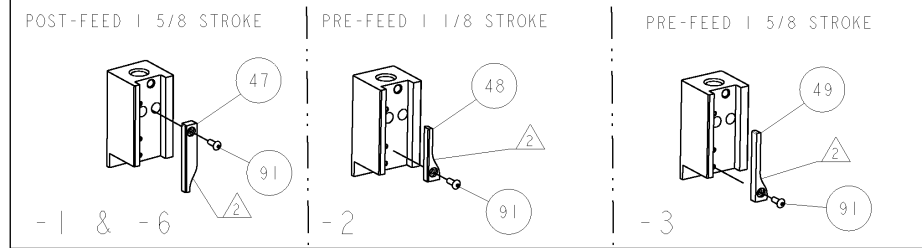


TERMINAL NAME: CONTACT, MOD IV, RECEPTACLE, CRIMP				
85969	-	AMP TERMINAL - AMP CRIMP SPECS		
86492	-			
87195	-	CRIMP HEIGHT	WIRE SIZE	REF SETTING
87309	-	0.72-0.94mm [.0285-.0370]	20AWG	B4
87523	-	0.72-0.84mm [.0285-.0330]	22AWG	B8
102680	-	0.64-0.83mm [.0250-.0325]	24AWG	C3
141097	-			
141760	-	CRIMP	SIZE	TYPE
141702	-	WIRE	1.40mm [.055]	F
-	-	INSUL	1.57mm [.062]	F
			Ø1.4 OR 1.75mm MAX	△
WIRE STRIP LENGTH	TERM APPL SPEC	FEED	APPLICATOR INSTRUCTIONS	SET UP GAGE
3.58-4.78mm	114-25003	7.62mm	408-8040	458637-1

REV	DATE	BY	CHKD	APPV
A	16MAY2007	RK	GB	



REV	DATE	BY	CHKD	APPV	DESCRIPTION	ITEM NO
-	-	-	-	-	REF	116
-	-	-	-	-	REF	115
-	-	-	-	-	SCR, BTN SKT HD CAP 10-32 X .375	114
-	-	-	-	-	LUBRICATOR ASSY	113
-	-	-	-	-	SCR, BTN SKT HD CAP 6-32 X .375	91
-	-	-	-	-	GUARD, REAR CHIP	90
-	-	-	-	-	GUARD, FRONT CHIP	89
-	-	-	-	-	SPACER	81
-	-	-	-	-	SF APPL INST 408-8040	72
-	-	-	-	-	GENERAL INSTRUCTION PKG	71
-	-	-	-	-	PLATE, IDENTIFICATION	67
-	-	-	-	-	SCREW, DRIVE	66
-	-	-	-	-	SCR, SET, SELF LOCKING 1/4-20 X .250	63
-	-	-	-	-	SCR, BHSC, SELF-LOCKING, 8-32 X .375	60
-	-	-	-	-	SCR, HEX HD CAP 8-32 X .312	59
-	-	-	-	-	PAWL, FEED	56
-	-	-	-	-	SCR, BTN SKT HD CAP 8-32 X .500	54
-	-	-	-	-	SCR, SKT HD CAP 8-32 X .750	53
-	-	-	-	-	CAM, PRE FEED, 1 5/8	49
-	-	-	-	-	CAM, PRE FEED, 1 1/8	48
-	-	-	-	-	CAM, POST FEED, 1 5/8	47
-	-	-	-	-	APPL, BASIC SUB ASSY (SIDE WISE MQCA)	46
-	-	-	-	-	PLUG, NYLON	45
-	-	-	-	-	RAM, SIDE FEED	44
-	-	-	-	-	SCR, BTN SKT HD CAP 5/16-24 X 1.00	41
-	-	-	-	-	SHIM SUB-ASSY	39
-	-	-	-	-	SHIM	38
-	-	-	-	-	FINE ADJUST HEAD ASSEMBLY	37
-	-	-	-	-	SCR, BTN SKT HD CAP 8-32 X .750	33
-	-	-	-	-	WASHER, SPRG LOCK, REG NO 10	32
-	-	-	-	-	SCR, SKT HD CAP 10-32 X .375	31
-	-	-	-	-	SPACER, STRIP GUIDE	30
-	-	-	-	-	ASSEMBLY, STRIP GUIDE	29
-	-	-	-	-	SPACER, CRIMPER	28
-	-	-	-	-	PLATE, STRIP GUIDE	24
-	-	-	-	-	STRIPPER	22
-	-	-	-	-	SCR, SKT HD CAP 8-32 X .500	21
-	-	-	-	-	WASHER, SPRG LOCK, REG NO 8	20
-	-	-	-	-	STRIPPER	19
-	-	-	-	-	HOLD DOWN, TERMINAL	18
-	-	-	-	-	SHEAR HOLDER, FRONT (NO CUT)	17
-	-	-	-	-	SCR, SKT HD CAP 6-32 X .250	16
-	-	-	-	-	PLATE, REAR SHEAR	15
-	-	-	-	-	SHEAR HOLDER, REAR	14
-	-	-	-	-	FLOATING SHEAR, REAR	13
-	-	-	-	-	SPRING, COMPRESSION	12
-	-	-	-	-	STOP, SHEAR	11
-	-	-	-	-	SHEAR HOLDER, FRONT	10
-	-	-	-	-	FLOATING SHEAR, FRONT	9
-	-	-	-	-	ANVIL, COMBINATION	8
-	-	-	-	-	DEPRESSOR SHEAR, REAR	6
-	-	-	-	-	DEPRESSOR, SHEAR	5
-	-	-	-	-	BLOCK, CRIMPER SPACER	4
-	-	-	-	-	CRIMPER, INSULATION F PREMIUM	3
-	-	-	-	-	SPACER, CRIMPER	2
-	-	-	-	-	CRIMPER, WIRE F STEPPED PREMIUM	1



DIMENSIONS: INCHES		TOLERANCES UNLESS OTHERWISE SPECIFIED:		MATERIAL		FINISH		WEIGHT		SCALE	
0 PLC	±	1 PLC	±0.1	2 PLC	±0.01	3 PLC	±0.001	4 PLC	±0.0001	ANGLE	±0.0001
CUSTOMER DRAWING		APPLICATOR INSTRUCTIONS		DATE		REV		APPV		SCALE	
408-8040		408-8040		16MAY2007		1		R. KNEPPER		3:5	

Mouser Electronics

Authorized Distributor

Click to View Pricing, Inventory, Delivery & Lifecycle Information:

[TE Connectivity:](#)

[1855284-3](#)