

4

3

2

1


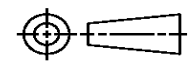
THIS DRAWING IS UNPUBLISHED. RELEASED FOR PUBLICATION
© COPYRIGHT ALL RIGHTS RESERVED.

LOC		DIST		REVISIONS		
P	LTR	DESCRIPTION	DATE	DWN	APVD	
	A1	ECR-13-018173	29NOV13	RS	LZ	

REPLACED BY OCEAN STYLE APPLICATOR PART NUMBER 2151164-1

FOR REPLACEMENT PARTS FOR APPLICATOR 1855123 REFER TO ADDITIONAL PAGE(S). SPARE PARTS KIT (IF LISTED) WILL REMAIN AVAILABLE.

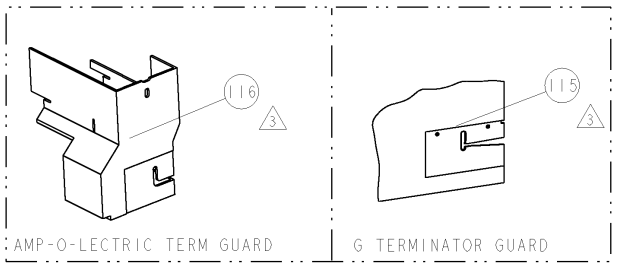
THE REPLACEMENT OCEAN STYLE APPLICATOR HAS THE SAME TERMINATOR/PRESS INTERFACE AS APPLICATOR 1855123

THIS DRAWING IS A CONTROLLED DOCUMENT.		DWN R.SHEN	 TE Connectivity		
DIMENSIONS:		CHK LJ.ZHANG			
		APVD U.GUO	NAME FINE ADJUST SIDE FEED HDM APPLICATOR		
TOLERANCES UNLESS OTHERWISE SPECIFIED:		PRODUCT SPEC	APPLICATION SPEC		
0 PLC ± 1 PLC ± 2 PLC ± 3 PLC ± 4 PLC ± ANGLES ±		WEIGHT	SIZE A3	CAGE CODE	DRAWING NO ©- 1855123
MATERIAL		CUSTOMER ACCESSIBLE PRODUCTION DRAWING		SCALE	SHEET 1 OF 2 REV A1

PART NUMBER	REV	FIRST USED	POWER UNIT	FEED TYPE	DESCRIPTION
1855123-1	A	122500-1	LEADMAKER	POST FEED	CUTS CARRIER
1855123-2	A	565435-5	BENCH MODEL K	PRE FEED	CUTS CARRIER
1855123-3	A	354500-1	BENCH MODEL G	PRE FEED	CUTS CARRIER
1855123-6	A	122500-1	LEADMAKER	POST FEED	CONTINUOUS CARRIER
7-1855123-7	A	-	-	-	SPARE PARTS

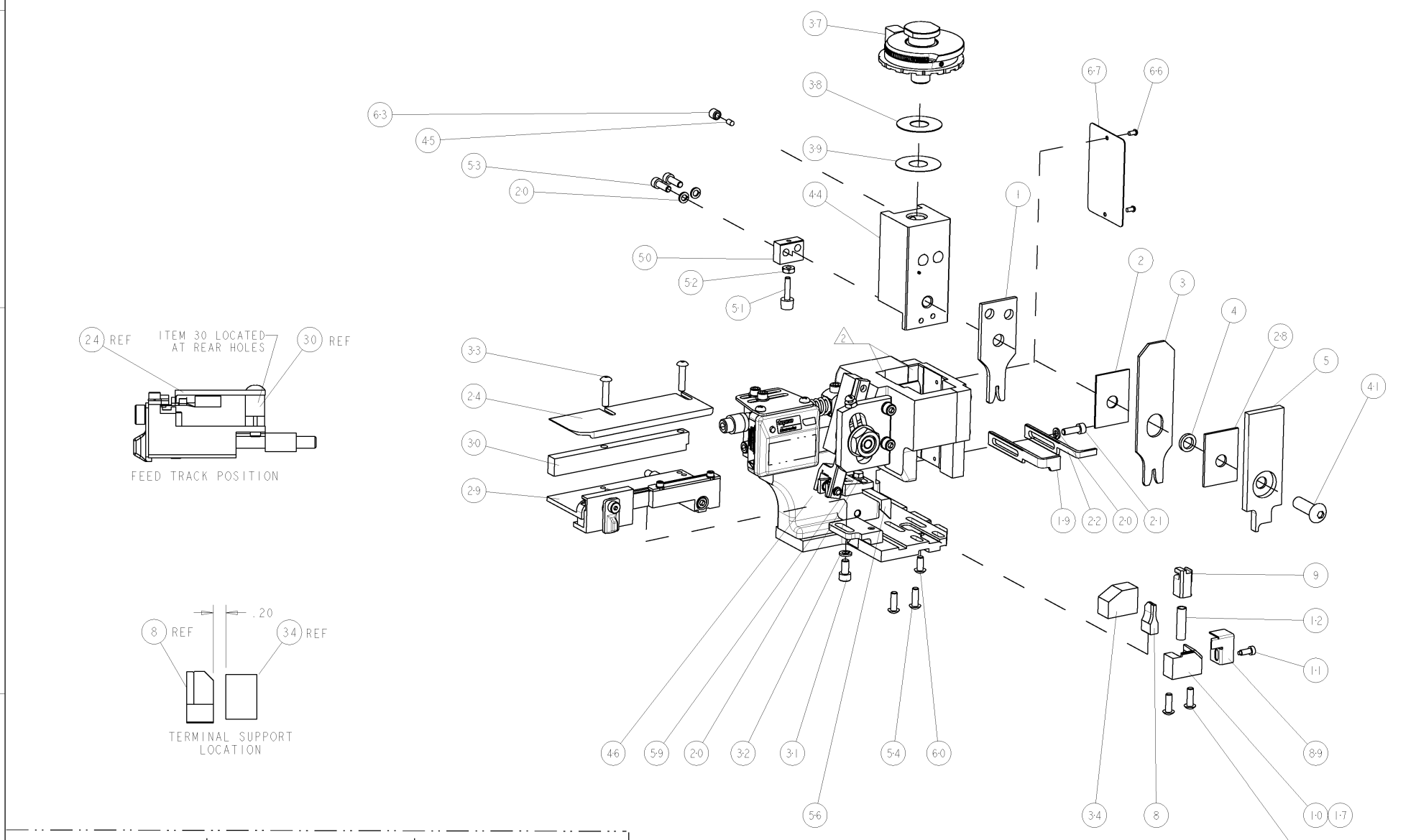
- △ RECOMMENDED SPARE PARTS
- △ GREASE LIGHTLY
- △ GUARD MUST BE IN PLACE WHEN OPERATING APPLICATOR IN A BENCH MACHINE

4. USE SPEC 114-18148-1 FOR TERMINAL 968849
 USE SPEC 114-18144-0 FOR TERMINAL 967702
 USE SPEC 114-18144-1 FOR TERMINAL 967705

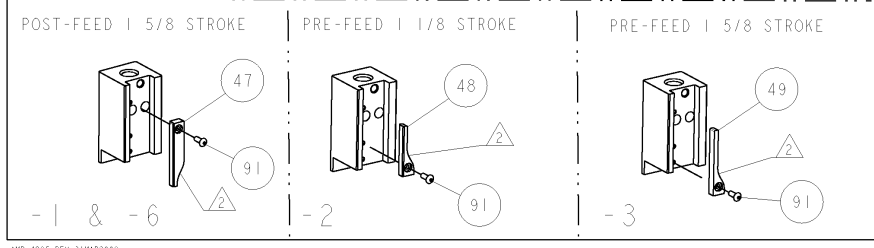


TERMINAL NAME: MCP 2.8 FLAT TYPE RECEPTACLE				
968849	-	AMP TERMINAL	-	AMP CRIMP SPECS
967702	-			
967705	-	CRIMP HEIGHT	WIRE SIZE	REF SETTING
-	-	.054±.002 [1.36±0.05mm]	16AWG	B7
-	-	.050±.002 [1.27±0.05mm]	18AWG	C4
-	-	.046±.002 [1.18±0.05mm]	20AWG	D2
-	-	-	-	-
-	-	CRIMP	SIZE	TYPE
-	-	WIRE	.080 [2.03mm]	F
-	-	INSUL	.100 [2.54mm]	OV
-	-			
WIRE STRIP LENGTH	TERM APPL SPEC	FEED	APPLICATOR INSTRUCTIONS	SET UP GAGE
.150 -.165	SEE NOTE 4	.472	408-8040 & 408-8490	458637-1

LOC	DIST	REV	DESCRIPTION	DATE	OWN	APPD
A	66		PRODUCT RELEASE	05SEP2008	CMR	GB



△	-	-	-	REF	-	..	455749-1	GUARD WINDOW	116
△	-	-	-	REF	-	..	679532-1	INSERT, GUARD	115
-	1	1	1	1	-	-	1-21002-7	SCR, BTN SKT HD CAP 6-32 X .375	91
-	1	1	1	1	-	-	318563-1	GUARD, FRONT CHIP	89
-	1	1	1	1	-	-	4088040	SF APPL INST 408-8040	72
-	1	1	1	1	-	-	217238-1	GENERAL INSTRUCTION PKG	71
-	1	1	1	1	-	-	461264-5	PLATE, IDENTIFICATION	67
-	2	2	2	2	-	-	21017-2	SCREW, DRIVE	66
-	1	1	1	1	-	-	21009-2	SCR, SET, SELF LOCKING 1/4-20 X .250	63
-	1	1	1	1	-	-	22733-8	SCR, BHSC, SELF-LOCKING, 8-32 X .375	60
-	1	1	1	1	-	-	2-22603-0	SCR, HEX HD CAP 8-32 X .312	59
-	1	1	1	1	-	-	458537-2	PAWL, FEED	56
-	4	4	4	4	-	-	2-21002-2	SCR, BTN SKT HD CAP 8-32 X .500	54
-	2	2	2	2	-	-	2-21000-7	SCR, SKT HD CAP 8-32 X .500	53
-	1	1	1	1	-	-	21018-5	NUT, HEX, REG 6-32	52
-	1	1	1	1	-	-	811242-2	BUMPER, HOLD DOWN	51
-	1	1	1	1	-	-	690753-1	SPACER, TONKER	50
-	-	-	-	-	690602-6	CAM, PRE FEED, 1/8	49
-	-	-	-	-	690602-5	CAM, PRE FEED, 1/16	48
-	-	-	-	-	690501-4	CAM, POST FEED, 1/8	47
-	1	1	1	1	-	-	459456-1	APPL, BASIC SUB ASSY (SIDE WISE MQCA)	46
-	1	1	1	1	-	-	690191-1	PLUG, NYLON	45
-	1	1	1	1	-	-	455673-1	RAM, SIDE FEED	44
-	1	1	1	1	-	-	7-21002-9	SCR, BTN SKT HD CAP 5/16-24 X 1.00	41
-	1	1	1	1	-	-	690125-1	SHIM SUB-ASSY	39
-	1	1	1	1	-	-	469367-9	SHIM	38
-	1	1	1	1	-	-	879103-2	FINE ADJUST HEAD ASSEMBLY	37
-	1	1	1	1	-	-	690786-4	TERMINAL SUPPORT	34
-	2	2	2	2	-	-	2-21002-4	SCR, BTN SKT HD CAP 8-32 X .750	33
-	1	1	1	1	-	-	21024-5	WASHER, SPRG LOCK, REG NO 10	32
-	1	1	1	1	-	-	3-21000-4	SCR, SKT HD CAP 10-32 X .375	31
-	1	1	1	1	-	-	1320908-1	SPACER, STRIP GUIDE	30
-	1	1	1	1	-	-	1633091-3	ASSEMBLY, STRIP GUIDE	29
-	1	1	1	1	-	-	1-455888-5	SPACER, CRIMPER	28
-	1	1	1	1	-	-	1320928-5	PLATE, STRIP GUIDE	24
-	1	1	1	1	-	-	690472-2	STRIPPER	22
-	1	1	1	1	-	-	2-21000-7	SCR, SKT HD CAP 8-32 X .500	21
-	4	4	4	4	-	-	21024-4	WASHER, SPRG LOCK, REG NO 8	20
-	-	-	-	-	691353-1	STRIPPER	19
-	1	1	1	1	-	-	679625-1	SHEAR HOLDER, FRONT (NO CUT)	17
-	1	1	1	1	-	-	3-22280-3	SPRING, COMPRESSION	12
-	1	1	1	1	-	-	690461-1	STOP, SHEAR	11
-	-	-	-	-	690459-1	SHEAR HOLDER, FRONT	10
-	1	1	1	1	-	-	1-454276-9	FLOATING SHEAR, FRONT	9
-	1	1	1	1	-	-	8-662186-3	ANVIL, COMBINATION	8
-	1	1	1	1	-	-	1-455889-4	DEPRESSOR, SHEAR	5
-	1	1	1	1	-	-	2-238011-2	BLOCK, CRIMPER SPACER	4
-	1	1	1	1	-	-	2-854830-4	CRIMPER, INSULATION SPECIAL	3
-	1	1	1	1	-	-	455888-9	SPACER, CRIMPER	2
-	1	1	1	1	-	-	1-456405-5	CRIMPER, WIRE PREMIUM	1



* WARNING
 ON INSTALLATION, SET WIRE DISC TO LARGEST WIRE SIZE SETTING. USE OF SETTINGS BELOW MIN. REQUIRED CRIMP HEIGHT SETTING WILL CAUSE DAMAGE TO CRIMP TOOLING.

DIMENSIONS:		TOLERANCES UNLESS OTHERWISE SPECIFIED:		MATERIAL:		FINISH:		CUSTOMER DRAWING	
INCHES		0 PLC	±						
		1 PLC	±0.1						
		2 PLC	±0.01						
		3 PLC	±0.001						
		4 PLC	±0.0001						
		ANGLES							

Mouser Electronics

Authorized Distributor

Click to View Pricing, Inventory, Delivery & Lifecycle Information:

[TE Connectivity:](#)

[1855123-3](#)