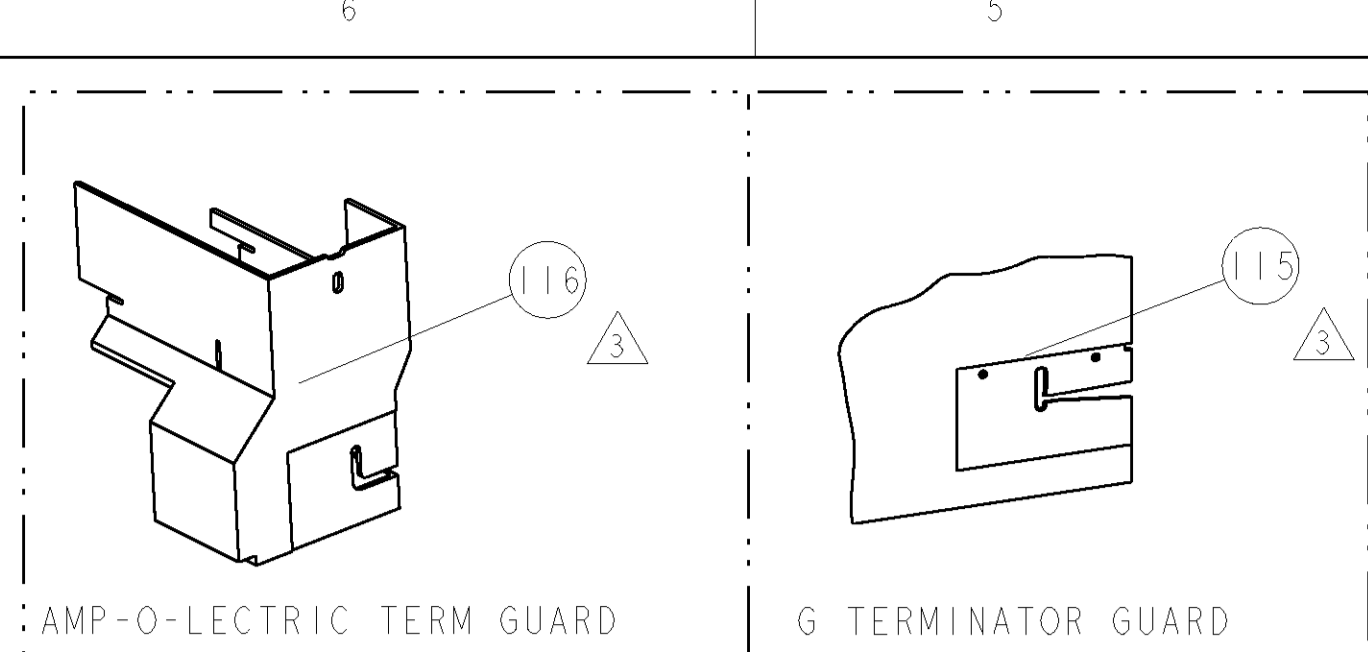


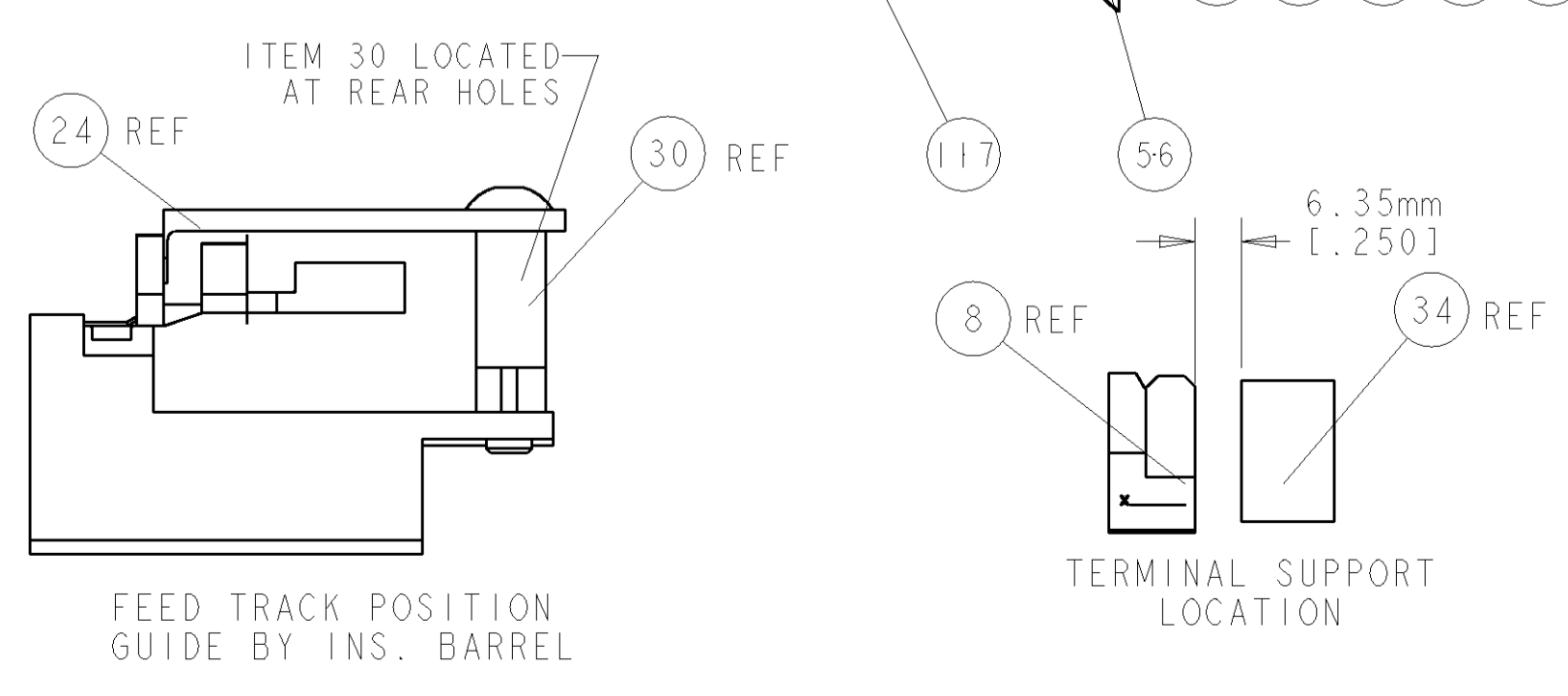
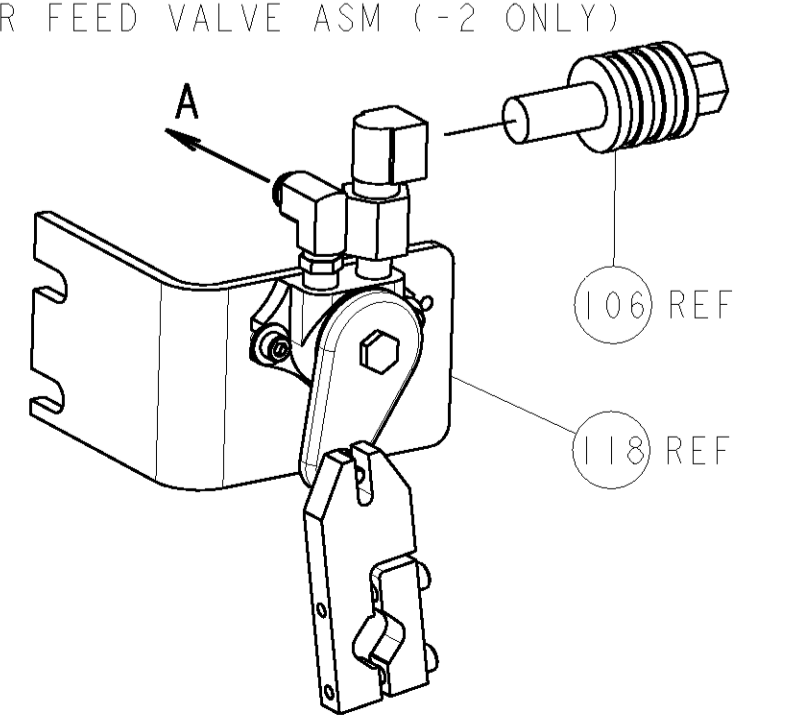
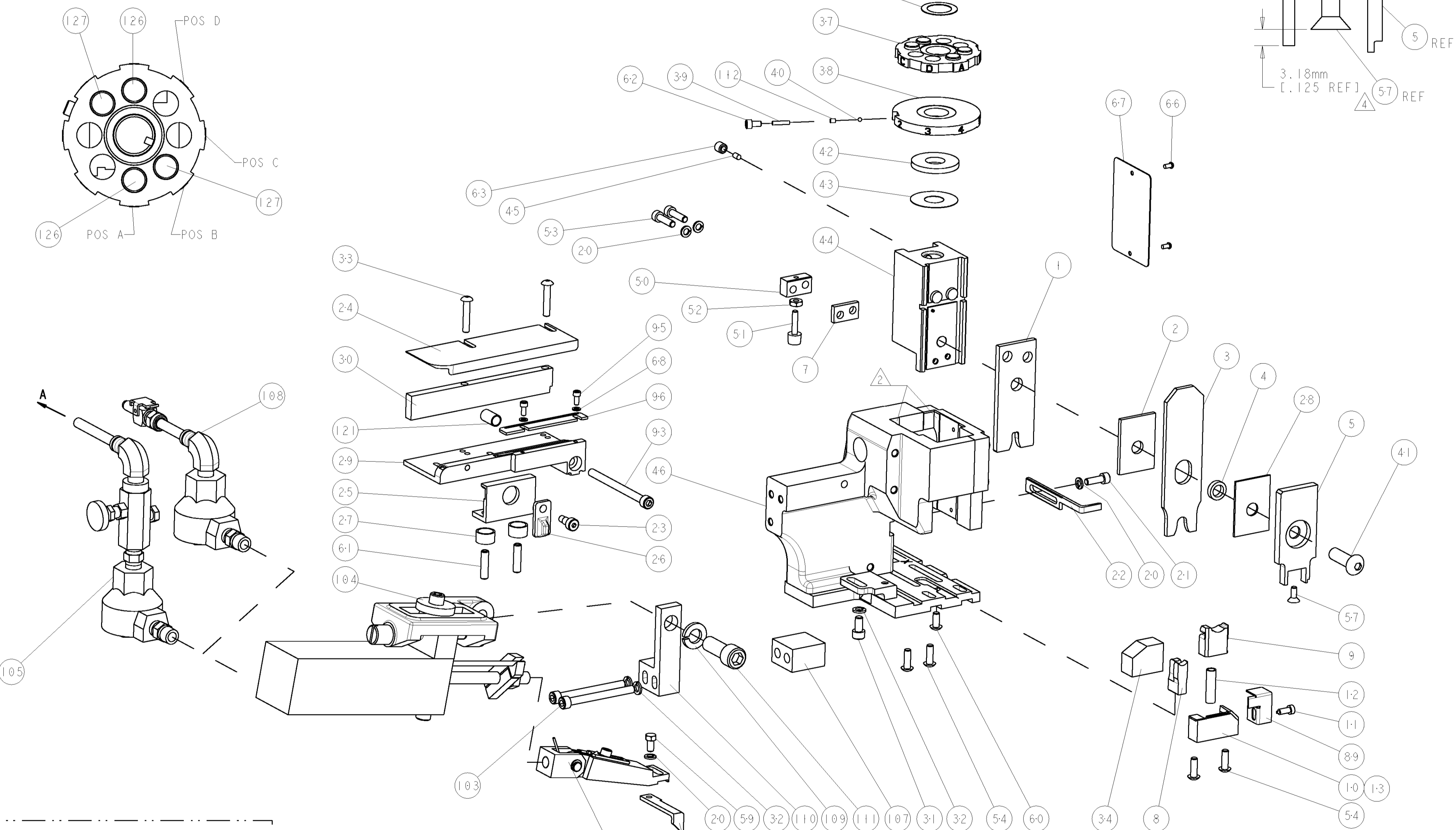
PART NUMBER	REV	FIRST USED	POWER UNIT	FEED TYPE	DESCRIPTION
1852839-1	A	122500-1	LEADMAKER	AIR FEED	CUTS CARRIER
1852839-2	A	565435-5	BENCH MODEL K	AIR FEED	CUTS CARRIER
1852839-3	A	354500-1	BENCH MODEL G	AIR FEED	CUTS CARRIER
1852839-6	A	122500-1	LEADMAKER	AIR FEED	CONTINUOUS CARRIER
7-1852839-7	A	-	-	-	SPARE PARTS



TERMINAL NAME: L TYPE SEALED		SUMITOMO		SUMITOMO TERMINAL - SUMITOMO CRIMP SPECS	
TE PN	1949959	SUMITOMO	8100-0797		
PAD LTR	-	CRIMP HEIGHT	WIRE SIZE		
-	-	A	2.95mm±.05/.05 [.116+.002/- .002]	8mm2	
-	-	B	2.40mm±.05/.05 [.094+.002/- .002]	5mm2	
-	-	C			
-	-	D			
SEAL PN	-	CRIMP	SIZE	TYPE	RANGE
1949960	7165-0133	WIRE	4.57mm [.180]	F	5-8mm2
-	-	INSUL	7.37mm [.290]	O	∅6.800 MAX
WIRE STRIP LENGTH	5.20-5.80	TERM APPL SPEC	NONE	FEED	27.50
				APPLICATOR INSTRUCTIONS	408-8040
				SET UP GAGE	458637-1

LOC	DIST	REV	DESCRIPTION	DATE	OWN	APVD
A	66		RELEASED	09JUL2009	RK	TE

- 1 RECOMMENDED SPARE PARTS
- 2 GREASE LIGHTLY
- 3 GUARD MUST BE IN PLACE WHEN OPERATING APPLICATOR IN A BENCH MACHINE
- 4 APPLY TORO-SEAL IN ALLEN SOCKET TO FILL HOLE AFTER FLAT HD HAS BEEN ADJUSTED TO CORRECT HEIGHT AT QUALIFICATION. APPLY PN 1-23419-5 LOC-TITE TO THREADS.
- 5 THE INSULATION RANGE LISTED IS FOR THE TERMINAL. THE INSULATION RANGE FOR THE SEAL IS ∅4.4-5.8mm.



QTY	DESCRIPTION	ITEM NO
- 2 2 2 2 -	4-354779-3 PIN, WIRE DISC, .3205	127
- 2 2 2 2 -	9-354778-1 PIN, WIRE DISC, .2950	126
- 1 1 1 1 -	1-22281-8 SPRING, COMPRESSION	121
- - - REF - -	692655-6 AIR FEED VALVE ASSEMBLY	118
- 1 1 1 1 -	461062-1 FEED FINGER ASSEMBLY	117
- - - REF - ..	455749-1 GUARD WINDOW	116
-77 -6 -3 -2 -1 U/M	PART NO	DESCRIPTION
		ITEM NO

QTY	DESCRIPTION	ITEM NO
3	REF	679532-1 INSERT, GUARD
- 1 1 1 1 -	690603-1 SPRING ASSIST AMP-O-MATOR APPLICATOR	115
- 1 1 1 1 -	3-21001-5 SCR, SKT HD CAP 3/8-16 X 1.000	111
- 1 1 1 1 -	459610-3 MOUNT, FEED BRACKET	110
- 1 1 1 1 -	21024-8 WASHER, SPRG LOCK, REG 3/8	109
- 1 1 1 1 -	692655-7 AIR FEED VALVE ASSEMBLY	108
- 1 1 1 1 -	461690-1 SPACER, AIR FEED	107
- - - REF - -	24024-2 VALVE, SHUT OFF	106
- - - 1 - -	692655-5 AIR FEED VALVE ASSEMBLY	105
- 1 1 1 1 -	461065-2 ASSEMBLY, AIR FEED	104
- 2 2 2 2 -	4-21000-3 SCR, SKT HD CAP 10-32 X 2.000	103
- 1 1 1 1 -	1-690438-0 FRONT STRIP GUIDE	96
- 2 2 2 2 -	1-21000-3 SCR, SKT HD CAP 4-40 X .250	95
- 1 1 1 1 -	8-21000-7 SCR, SKT HD CAP 10-32 X 2.500	93
- 1 1 1 1 -	318563-1 GUARD, FRONT CHIP	89
- 1 1 1 1 -	4088040 SF APPL INST 408-8040	72
- 1 1 1 1 -	217238-1 GENERAL INSTRUCTION PKG	71
- 2 2 2 2 -	21024-2 WASHER, SPRG LOCK, REG NO 4	68
- 1 1 1 1 -	461264-1 PLATE, IDENTIFICATION	67
- 2 2 2 2 -	21017-2 SCREW, DRIVE	66
- 1 1 1 1 -	986950-1 WASHER, FLAT PRECISION	64
- 1 1 1 1 -	21009-2 SCR, SET, SELF LOCKING 1/4-20 X .250	63
- 1 1 1 1 -	23030-1 SCR, SKT HD CAP 6-32 X .25	62
- 2 2 2 2 -	5-21006-6 SCR, SET, CUP POINT 10-32 X .750	61
- 1 1 1 1 -	22733-8 SCR, BHSC, SELF-LOCKING, 8-32 X .375	60
- 1 1 1 1 -	2-22603-0 SCR, HEX HD CAP 8-32 X .312	59
- 1 1 1 1 -	1-21003-9 SCR, FLT SKT HD CAP 6-32 X .375	57
- 1 1 1 1 -	458537-2 PAWL, FEED	56
- 4 4 4 4 -	2-21002-2 SCR, BTN SKT HD CAP 8-32 X .500	54
- 2 2 2 2 -	2-21000-8 SCR, SKT HD CAP 8-32 X .625	53
- 1 1 1 1 -	21018-5 NUT, HEX, REG 6-32	52
- 1 1 1 1 -	811242-2 BUMPER, HOLD DOWN	51
- 1 1 1 1 -	690753-1 SPACER, TONKER	50
- 1 1 1 1 -	1633399-4 APPL., BASIC AIR FEED SUB ASSY	46
- 1 1 1 1 -	690191-1 PLUG, NYLON	45
- 1 1 1 1 -	1-819307-9 RAM, SIDE FEED	44
- 1 1 1 1 -	690125-1 SHIM SUB-ASSY	43
- 1 1 1 1 -	690124-4 WASHER, RAM (.135)	42
- 1 1 1 1 -	7-21002-9 SCR, BTN SKT HD CAP 5/16-24 X 1.00	41
- 1 1 1 1 -	23241-6 BALL, STEEL	40
- 1 1 1 1 -	690170-1 SPRING, COMPRESSION	39
- 1 1 1 1 -	1-690142-1 DISC, INSULATION	38
- 1 1 1 1 -	354777-1 WIRE DISC, ASSEMBLY	37
- 1 1 1 1 -	22480-5 SPRING, COMPRESSION	36
- 1 1 1 1 -	690212-1 POST, RAM	35
- 1 1 1 1 -	690786-3 TERMINAL SUPPORT	34
- 2 2 2 2 -	9-21002-6 SCR, BTN SKT HD CAP 8-32 X .875	33
- 3 3 3 3 -	21024-5 WASHER, SPRG LOCK, REG NO 10	32
- 1 1 1 1 -	3-21000-4 SCR, SKT HD CAP 10-32 X .375	31
- 1 1 1 1 -	1-1320908-8 SPACER, STRIP GUIDE	30
- 1 1 1 1 -	1-1633087-0 PLATE, STRIP GUIDE	29
- 1 1 1 1 -	1-455888-0 SPACER, CRIMPER	28
- 2 2 2 2 -	1-22284-0 SPRING, COMPRESSION	27
- 1 1 1 1 -	356835-1 LEVER, DRAG RELEASE	26
- 1 1 1 1 -	240792-1 DRAG, TERMINAL	25
- 1 1 1 1 -	1320928-6 PLATE, STRIP GUIDE	24
- 1 1 1 1 -	21989-8 SCR, SKT HD SHLDR 3/16 DIA X .250	23
- 1 1 1 1 -	690472-2 STRIPPER	22
- 1 1 1 1 -	2-21000-7 SCR, SKT HD CAP 8-32 X .500	21
- 4 4 4 4 -	21024-4 WASHER, SPRG LOCK, REG NO 8	20
- 1 1 1 1 -	679625-4 SHEAR HOLDER, FRONT (NO CUT)	13
- 1 1 1 1 -	3-22280-3 SPRING, COMPRESSION	12
- 1 1 1 1 -	1-690461-7 STOP, SHEAR	11
- - - 1 1 1 -	2-690459-2 SHEAR HOLDER, FRONT	10
- 1 1 1 1 -	318059-4 FLOATING SHEAR, FRONT	9
- 1 1 1 1 -	3-163332-0 ANVIL, COMBINATION	8
- 1 1 1 1 -	240641-5 SPACER	7
- - - - -	-	6
- 1 1 1 1 -	122399-4 DEPRESSOR, SHEAR	5
- 1 1 1 1 -	238011-2 BLOCK, CRIMPER SPACER	4
- 1 1 1 1 -	4-1633510-5 CRIMPER, INSUL O	3
- 1 1 1 1 -	2-455888-3 SPACER, CRIMPER	2
- 1 1 1 1 -	456428-4 CRIMPER, WIRE	1

THIS DRAWING IS UNPUBLISHED. RELEASED FOR PUBLICATION. COPYRIGHT © BY TYCO ELECTRONICS CORPORATION. ALL RIGHTS RESERVED.

Tyco Electronics
Harrisburg, PA 17105-3608

DATE: 09JUL2009
DRAWN: M. DEWING
CHECKED: T. ELBIN
APPROVED: M. KNEPPER

PRODUCT SPEC: SIDE FEED HDM APPLICATOR
APPLICATION SPEC: -
SIZE: A1
CAGE CODE: 00779
DRAWING NO: 1852839
SCALE: 3:5
SHEET: 1 OF 1
REV: A

Mouser Electronics

Authorized Distributor

Click to View Pricing, Inventory, Delivery & Lifecycle Information:

[TE Connectivity:](#)

[1852839-2](#)