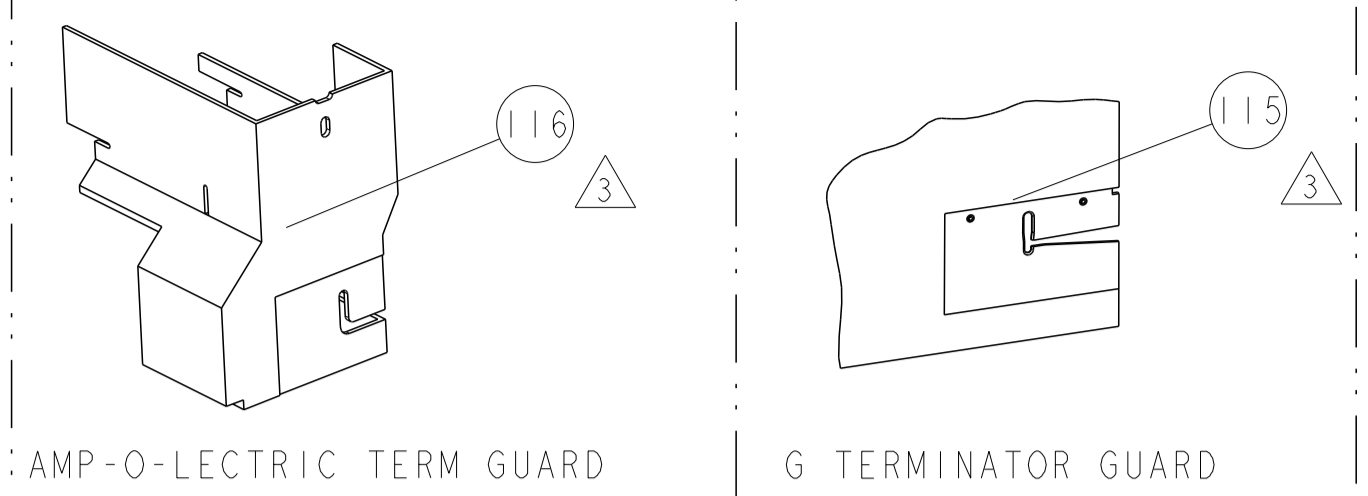


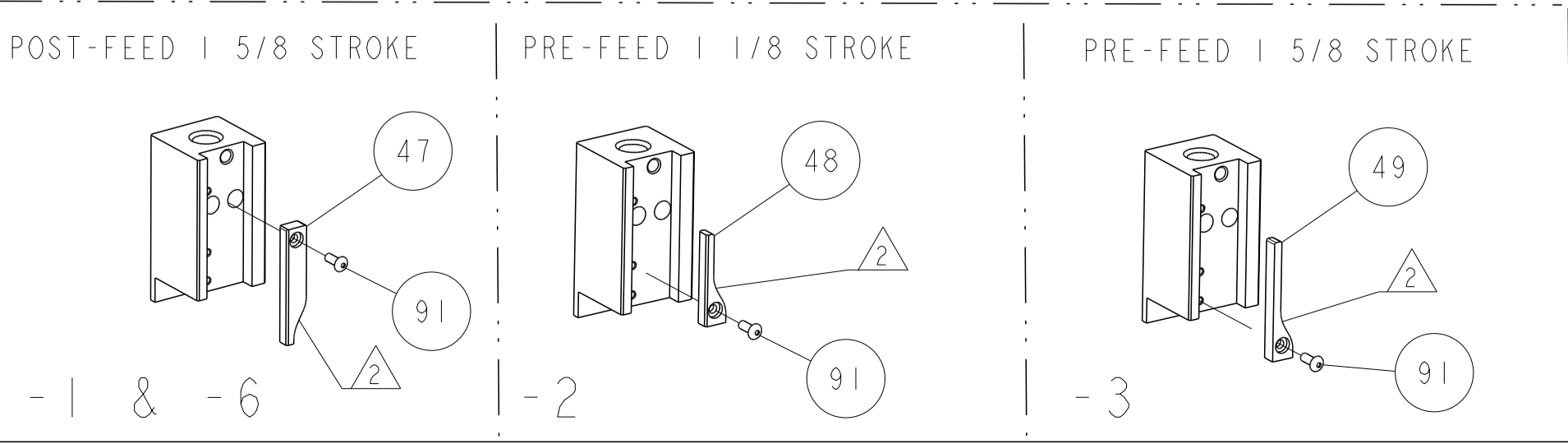
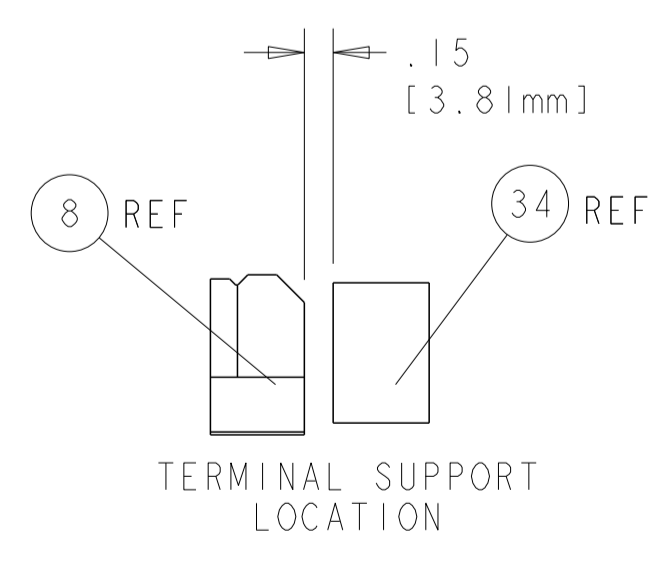
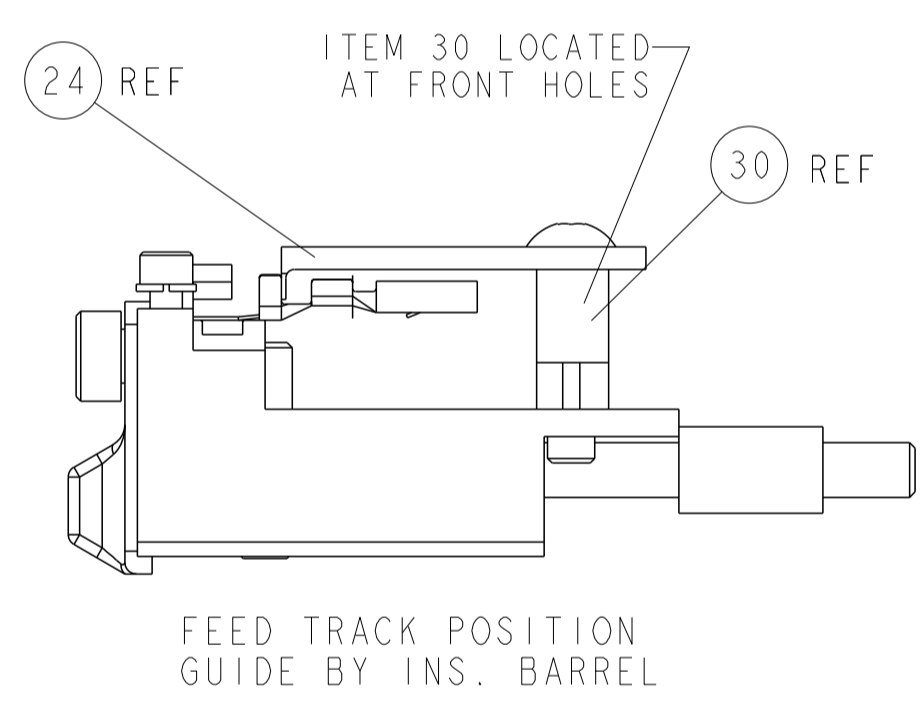
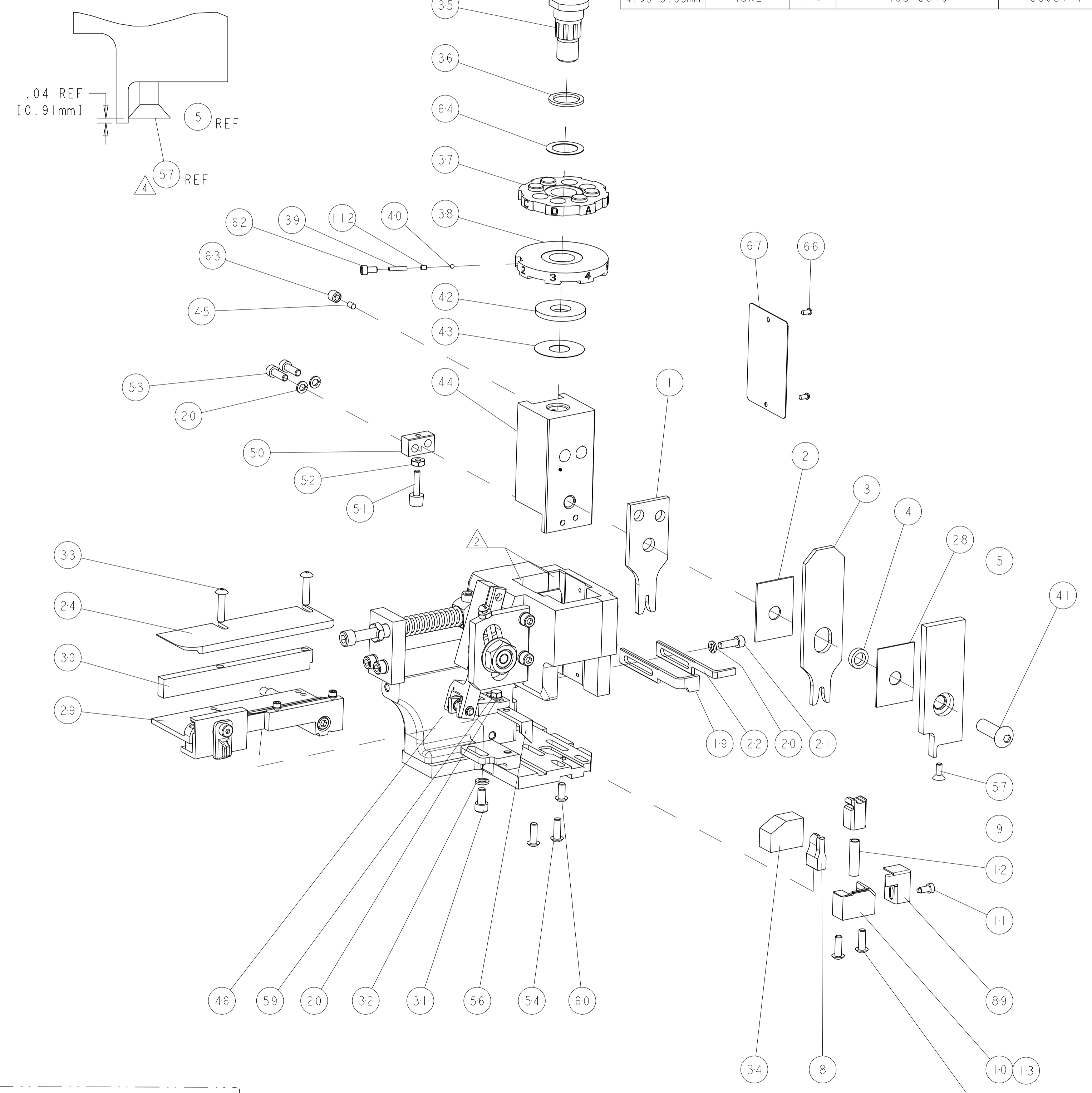
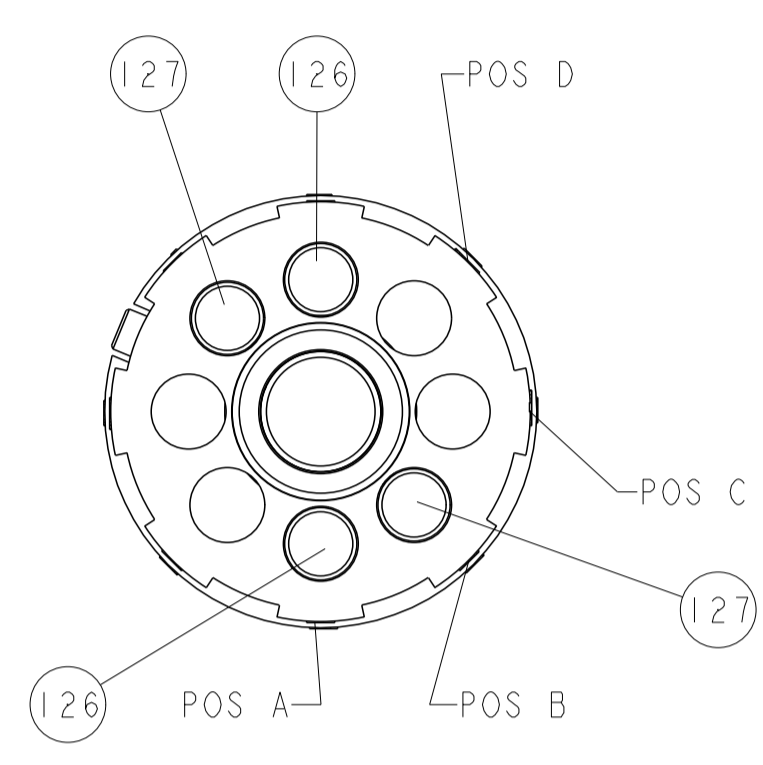
| PART NUMBER | REV | FIRST USED | POWER UNIT    | FEED TYPE | DESCRIPTION        |
|-------------|-----|------------|---------------|-----------|--------------------|
| 1852531-1   | A   | 122500-1   | LEADMAKER     | POST FEED | CUTS CARRIER       |
| 1852531-2   | A   | 565435-5   | BENCH MODEL K | PRE FEED  | CUTS CARRIER       |
| 1852531-3   | A   | 354500-1   | BENCH MODEL G | PRE FEED  | CUTS CARRIER       |
| 1852531-6   | A   | 122500-1   | LEADMAKER     | POST FEED | CONTINUOUS CARRIER |
| 7-1852531-7 | A   | -          | -             | -         | SPARE PARTS        |

- △ 1 RECOMMENDED SPARE PARTS
- △ 2 GREASE LIGHTLY
- △ 3 GUARD MUST BE IN PLACE WHEN OPERATING APPLICATOR IN A BENCH MACHINE



| TERMINAL NAME: F M/P .280 SEALED TANGLESS |                |  |                         |           |              |
|---|----------------|--|-------------------------|-----------|--------------|
| TE PN                                     | PACKARD PN     | PACKARD TERMINAL - PACKARD CRIMP SPECS |                         |           |              |
| 1949458                                   | 15326264       |  |                         |           |              |
|   |                | PAD LTR                                | CRIMP HEIGHT            | WIRE SIZE |              |
| -   | -              | A                                      | 1.15±0.05mm [.045±.002] | 0.50mm2   |              |
| -   | -              | B                                      | 1.05±0.05mm [.041±.002] | 0.35mm2   |              |
| -   | -              | C                                      | -                       | -         |              |
| -   | -              | D                                      | -                       | -         |              |
|   |                | CRIMP                                  | SIZE                    | TYPE      | RANGE        |
| SEAL PN.                                  | -              | -                                      | -                       | -         | -            |
| 286970-1                                  | 15366021       | WIRE                                   | 1.75mm [.069]           | F         | 0.35-0.50mm2 |
| -   | -              | INSUL                                  | 3.60mm [1.42]           | O         | 1.2-1.85mm   |
| WIRE STRIP LENGTH                         | TERM APPL SPEC | FEED                                   | APPLICATOR INSTRUCTIONS |           | SET UP GAGE  |
| 4.95-5.33mm                               | NONE           | 10.92mm                                | 408-8040                |           | 458637-1     |

| LOC | DIST | REVISIONS |                 |           |     |      |
|-----|------|-----------|-----------------|-----------|-----|------|
| A   | 66   | P LTR     | DESCRIPTION     | DATE      | DWN | APVD |
|     |      | A         | PRODUCT RELEASE | 22AUG2007 | CMR | GB   |
|     |      | A1        | ECR-14-013118   | 3SEP14    | RS  | LZ   |



|   |   |     |   |    |             |                                       |     |
|---|---|-----|---|----|-------------|---------------------------------------|-----|
| 2 | 2 | 2   | 2 | -  | 5-354779-2  | PIN, WIRE DISC, .3250                 | 127 |
| 2 | 2 | 2   | 2 | -  | 4-354779-1  | PIN, WIRE DISC, .3195                 | 126 |
| - | - | REF | - | .. | 455749-1    | GUARD WINDOW                          | 116 |
| - | - | REF | - | .. | 679532-1    | INSERT, GUARD                         | 115 |
| - | 1 | 1   | 1 | 1  | 690603-1    | SPRING ASSIST AMP-O-MATOR APPLICATOR  | 112 |
| - | 1 | 1   | 1 | 1  | 1-21002-7   | SCR, BTN SKT HD CAP 6-32 X .375       | 91  |
| - | 1 | 1   | 1 | 1  | 318563-1    | GUARD, FRONT CHIP                     | 89  |
| - | 1 | 1   | 1 | 1  | 4088040     | SF APPL INST 408-8040                 | 72  |
| - | 1 | 1   | 1 | 1  | 217238-1    | GENERAL INSTRUCTION PKG               | 71  |
| - | 1 | 1   | 1 | 1  | 461264-1    | PLATE, IDENTIFICATION                 | 67  |
| - | 2 | 2   | 2 | 2  | 21017-2     | SCREW, DRIVE                          | 66  |
| - | 1 | 1   | 1 | 1  | 986950-1    | WASHER, FLAT PRECISION                | 64  |
| - | 1 | 1   | 1 | 1  | 21009-2     | SCR, SET, SELF LOCKING 1/4-20 X .250  | 63  |
| - | 1 | 1   | 1 | 1  | 23030-1     | SCR, SKT HD CAP 6-32 x .25            | 62  |
| - | 1 | 1   | 1 | 1  | 22733-8     | SCR, BHSC, SELF-LOCKING, 8-32 X .375  | 60  |
| - | 1 | 1   | 1 | 1  | 2-22603-0   | SCR, HEX HD CAP 8-32 X .312           | 59  |
| - | 1 | 1   | 1 | 1  | 1-21003-9   | SCR, FLT SKT HD CAP 6-32 X .375       | 57  |
| - | 1 | 1   | 1 | 1  | 458537-2    | PAWL, FEED                            | 56  |
| - | 4 | 4   | 4 | 4  | 2-21002-2   | SCR, BTN SKT HD CAP 8-32 X .500       | 54  |
| - | 2 | 2   | 2 | 2  | 2-21000-7   | SCR, SKT HD CAP 8-32 X .500           | 53  |
| - | 1 | 1   | 1 | 1  | 21018-5     | NUT, HEX, REG 6-32                    | 52  |
| - | 1 | 1   | 1 | 1  | 811242-2    | BUMPER, HOLD DOWN                     | 51  |
| - | 1 | 1   | 1 | 1  | 690753-1    | SPACER, TONKER                        | 50  |
| - | - | 1   | - | -  | 690602-6    | CAM, PRE FEED, 1 5/8                  | 49  |
| - | - | 1   | - | -  | 690602-5    | CAM, PRE FEED, 1 1/8                  | 48  |
| - | 1 | -   | - | -  | 690501-4    | CAM, POST-FEED 1 5/8                  | 47  |
| - | 1 | 1   | 1 | 1  | 459456-1    | APPL. BASIC SUB ASSY (SIDE WISE MOCA) | 46  |
| - | 1 | 1   | 1 | 1  | 690191-1    | PLUG, NYLON                           | 45  |
| - | 1 | 1   | 1 | 1  | 455673-1    | RAM, SIDE FEED                        | 44  |
| - | 1 | 1   | 1 | 1  | 690125-1    | SHIM SUB-ASSY                         | 43  |
| - | 1 | 1   | 1 | 1  | 690124-1    | WASHER, RAM (.115)                    | 42  |
| - | 1 | 1   | 1 | 1  | 7-21002-9   | SCR, BTN SKT HD CAP 5/16-24 X 1.00    | 41  |
| - | 1 | 1   | 1 | 1  | 23241-6     | BALL, STEEL                           | 40  |
| - | 1 | 1   | 1 | 1  | 690170-1    | SPRING, COMPRESSION                   | 39  |
| - | 1 | 1   | 1 | 1  | 690142-6    | DISC, INSULATION                      | 38  |
| - | 1 | 1   | 1 | 1  | 354777-1    | WIRE DISC, ASSEMBLY                   | 37  |
| - | 1 | 1   | 1 | 1  | 22480-5     | SPRING, COMPRESSION                   | 36  |
| - | 1 | 1   | 1 | 1  | 690212-1    | POST, RAM                             | 35  |
| - | 1 | 1   | 1 | 1  | 3-690786-5  | TERMINAL SUPPORT                      | 34  |
| - | 2 | 2   | 2 | 2  | 2-21002-4   | SCR, BTN SKT HD CAP 8-32 X .750       | 33  |
| - | 1 | 1   | 1 | 1  | 21024-5     | WASHER, SPRG LOCK, REG NO 10          | 32  |
| - | 1 | 1   | 1 | 1  | 3-21000-4   | SCR, SKT HD CAP 10-32 X .375          | 31  |
| - | 1 | 1   | 1 | 1  | 1-1320908-5 | SPACER, STRIP GUIDE                   | 30  |
| - | 1 | 1   | 1 | 1  | 1633091-1   | ASSEMBLY, STRIP GUIDE                 | 29  |
| - | 1 | 1   | 1 | 1  | 455888-7    | SPACER, CRIMPER                       | 28  |
| - | 1 | 1   | 1 | 1  | 1320928-1   | STRIP GUIDE                           | 24  |
| - | 1 | -   | - | 1  | 690472-2    | STRIPPER                              | 22  |
| - | 1 | 1   | 1 | 1  | 2-21000-7   | SCR, SKT HD CAP 8-32 X .500           | 21  |
| - | 4 | 4   | 4 | 4  | 21024-4     | WASHER, SPRG LOCK, REG NO 8           | 20  |
| - | - | 1   | - | -  | 691353-1    | STRIPPER                              | 19  |
| △ | - | -   | - | -  | 679625-2    | SHEAR HOLDER, FRONT (NO CUT)          | 13  |
| △ | - | 1   | 1 | 1  | 3-22280-3   | SPRING, COMPRESSION                   | 12  |
| △ | - | 1   | 1 | 1  | 690461-2    | STOP, SHEAR                           | 11  |
| △ | - | 1   | 1 | 1  | 1-690459-0  | SHEAR HOLDER, FRONT                   | 10  |
| △ | - | 1   | 1 | 1  | 318707-2    | FLOATING SHEAR, FRONT                 | 9   |
| △ | 1 | 1   | 1 | 1  | 3-1633535-5 | ANVIL, COMBINATION                    | 8   |
| - | - | -   | - | -  | -           | -                                     | 7   |
| - | - | -   | - | -  | -           | -                                     | 6   |
| - | 1 | 1   | 1 | 1  | 318701-1    | DEPRESSOR, SHEAR                      | 5   |
| - | 1 | 1   | 1 | 1  | 238011-2    | BLOCK, CRIMPER SPACER                 | 4   |
| △ | 1 | 1   | 1 | 1  | 7-1583690-2 | CRIMPER, INSUL O                      | 3   |
| - | 1 | 1   | 1 | 1  | 1-455888-0  | SPACER, CRIMPER                       | 2   |
| △ | 1 | 1   | 1 | 1  | 5-1633305-7 | CRIMPER, WIRE PREMIUM                 | 1   |

| DIMENSIONS:      |         | TOLERANCES UNLESS OTHERWISE SPECIFIED: |        | APVD                       |            | NAME        |                |
|------------------|---------|--|--------|----------------------------|------------|-------------|----------------|
| 0 PLC            | ±       | 0.001                                  |        | 10AUG2007                  | 10AUG2007  | 10AUG2007   | 10AUG2007      |
| 1 PLC            | ±       | 0.01                                   |        |                            |            |             |                |
| 2 PLC            | ±       | 0.01                                   |        |                            |            |             |                |
| 3 PLC            | ±       | 0.001                                  |        |                            |            |             |                |
| 4 PLC            | ±       | 0.0001                                 |        |                            |            |             |                |
| ANGLES           | ±       |  |        |                            |            |             |                |
| MATERIAL:        | FINISH: | WEIGHT:                                | SCALE: | SIZE:                      | CAGE CODE: | DRAWING NO: | RESTRICTED TO: |
|                  |         |  |        | A1                         | 00779      | C=1852531   |                |
| CUSTOMER DRAWING |         |  |        | CUSTOMER VIEWABLE ASSEMBLY |            |             |                |

# Mouser Electronics

Authorized Distributor

Click to View Pricing, Inventory, Delivery & Lifecycle Information:

[TE Connectivity:](#)

[1852531-2](#)