

4

3

2

1

THIS DRAWING IS UNPUBLISHED. RELEASED FOR PUBLICATION
© COPYRIGHT ALL RIGHTS RESERVED.

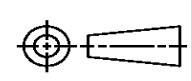
LOC	DIST	REVISIONS			
P	LTR	DESCRIPTION	DATE	DWN	APVD
	A1	ECR-14-002793	25FEB2014	GK	HMR

REPLACED BY OCEAN STYLE APPLICATOR PART NUMBER 2150035-2

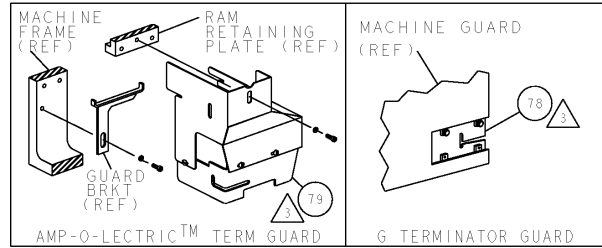
FOR REPLACEMENT PARTS FOR APPLICATOR 1852502
REFER TO ADDITIONAL PAGE(S). SPARE PARTS KIT (IF LISTED)
WILL REMAIN AVAILABLE.

THE REPLACEMENT OCEAN STYLE APPLICATOR HAS THE
SAME TERMINATOR/PRESS INTERFACE AS APPLICATOR
1852502

THIS DRAWING IS A CONTROLLED DOCUMENT.		DWN	GOPALAKRISHNA HV														
DIMENSIONS:		CHK	RAGHAVENDRA														
TOLERANCES UNLESS OTHERWISE SPECIFIED:		APVD	RAGHAVENDRA														
<table border="0"> <tr><td>0 PLC</td><td>±</td></tr> <tr><td>1 PLC</td><td>±</td></tr> <tr><td>2 PLC</td><td>±</td></tr> <tr><td>3 PLC</td><td>±</td></tr> <tr><td>4 PLC</td><td>±</td></tr> <tr><td>ANGLES</td><td>±</td></tr> </table>		0 PLC	±	1 PLC	±	2 PLC	±	3 PLC	±	4 PLC	±	ANGLES	±	PRODUCT SPEC	NAME		
0 PLC	±																
1 PLC	±																
2 PLC	±																
3 PLC	±																
4 PLC	±																
ANGLES	±																
MATERIAL		APPLICATION SPEC	END FEED HDM APPLICATOR														
FINISH		WEIGHT	SIZE	CAGE CODE	DRAWING NO												
			A3		©- 1852502												
		CUSTOMER DRAWING	SCALE	SHEET 1 OF 2	REV A1												



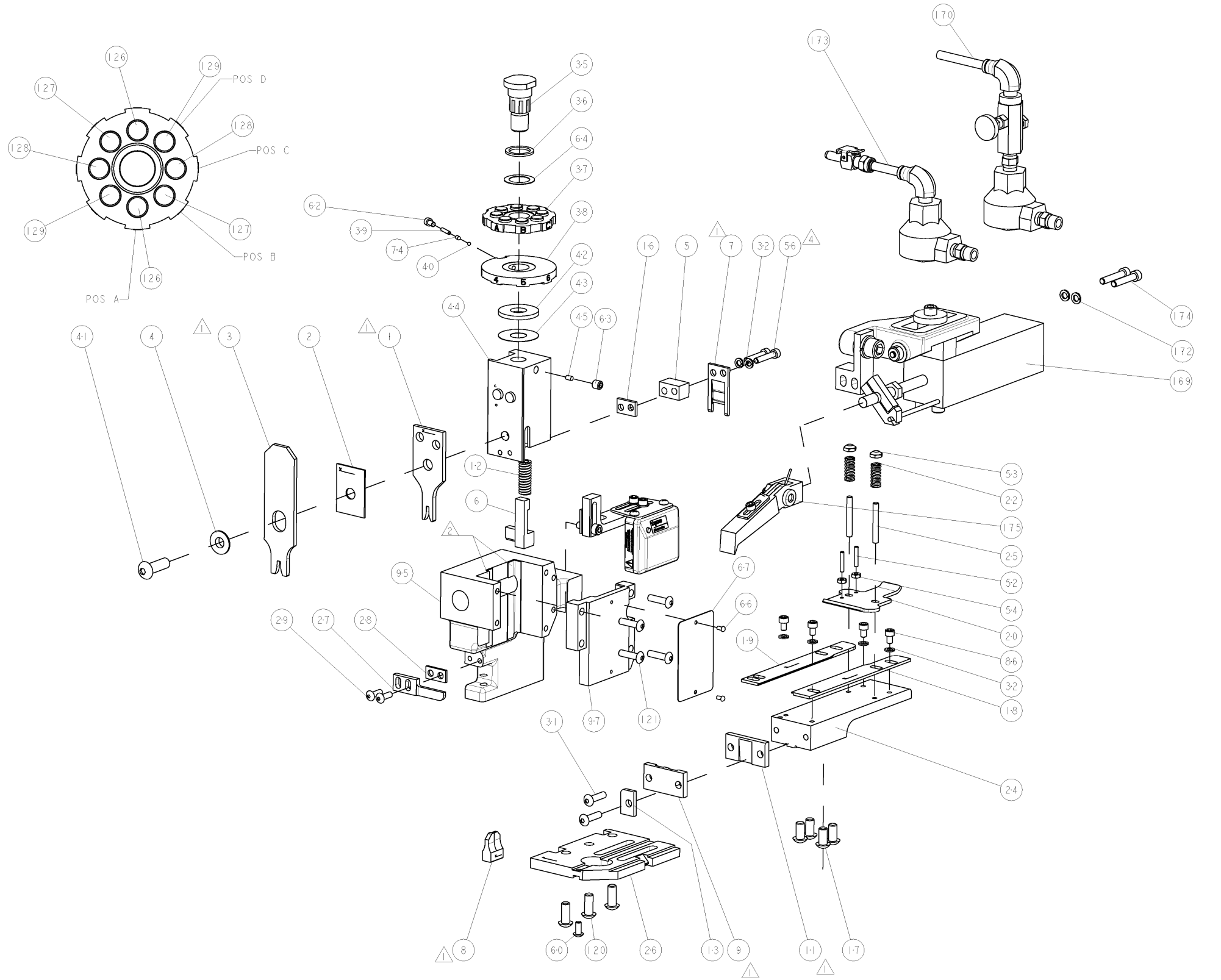
PART NUMBER	REV	FIRST USED	POWER UNIT	FEED TYPE
1852502-1	A	122500-1	LEADMAKER & BENCH MODEL G	AIR FEED
1852502-2	A	565435-5	BENCH MODEL K	AIR FEED
7-1852502-7	A	-	SPARE PARTS	-



TERMINAL NAME: 6.3MM SERIES FAST-IN-FASTON TAB					
293041	-	-	TYCO TERMINAL - TYCO CRIMP SPECS		
-	-	PAD LTR	CRIMP HEIGHT	WIRE SIZE	
-	-	A	1.40±0.03mm [1.05±.001]	1.00mm ²	
-	-	B	1.35±0.03mm [1.05±.001]	0.75mm ²	
-	-	C	1.30±0.03mm [1.05±.001]	0.50mm ²	
-	-	D	1.25±0.03mm [1.04±.001]	0.35mm ²	
-	-	CRIMP	SIZE	TYPE	RANGE
-	-	WIRE	2.03mm [1.080]	F	0.35-1.00mm ²
-	-	INSUL	3.30mm [1.130]	F	Ø1.3-2.3
WIRE STRIP LENGTH	TERM APPL SPEC	FEED	APPL INSTRUCTIONS	SET UP GAGE	
5.50	114-20119	28.50	408-8039	458638-1	

REV	DATE	BY	CHKD	DESCRIPTION
A	25JUN2007	BH	BH	RELEASED

- 1 RECOMMENDED SPARE PARTS
- 2 GREASE LIGHTLY
- 3 GUARD MUST BE IN PLACE WHEN OPERATING APPLICATOR IN A BENCH MACHINE
- 4 ITEM 56, CUT TO LENGTH AT ASSEMBLY.



REV	DATE	BY	CHKD	DESCRIPTION	ITEM NO	
-	1	1	-	460680-1	FEED FINGER ASSEMBLY	175
-	2	2	-	3-21000-9	SCR, SKT HD CAP 10-32 X 1.000	174
-	-	1	-	692655-7	AIR FEED VALVE ASSEMBLY	173
-	2	2	-	21024-5	WASHER, SPRG LOCK, REG NO 10	172
-	1	-	-	692655-5	AIR FEED VALVE ASSEMBLY	170
-	1	1	-	2-460277-7	AIR FEED ASSY	169
-	2	2	-	3-354779-5	PIN, WIRE DISC, .3165	129
-	2	2	-	3-354779-1	PIN, WIRE DISC, .3145	128
-	2	2	-	2-354779-7	PIN, WIRE DISC, .3125	127
-	2	2	-	2-354779-4	PIN, WIRE DISC, .3110	126
-	4	4	-	2-21002-9	SCR, BTN SKT HD CAP 10-32 X .750	121
-	3	3	-	2-22733-8	SCR, BHSC, SELF-LOCKING, 1/4-20 X .625	120
-	1	1	-	454220-1	CAP, RAM	97
-	1	1	-	453736-1	HOUSING, APPLICATOR	95
-	4	4	-	2-21000-5	SCR, SKT HD CAP 8-32 X .250	86
-	REF	-	-	455745-1	GUARD WINDOW	79
-	-	REF	-	679532-1	INSERT, GUARD	78
-	1	1	-	690603-1	SPRING ASSIST AMP-O-MATOR APPLICATOR	74
-	1	1	-	217238-1	GENERAL INSTRUCTION PKG	72
-	1	1	-	4088039	EF APPL INST 408-8039	71
-	1	1	-	461264-1	PLATE, IDENTIFICATION	67
-	2	2	-	21017-2	SCREW, DRIVE	66
-	1	1	-	986950-1	WASHER, FLAT PRECISION	64
-	1	1	-	21009-2	SCR, SET, SELF LOCKING 1/4-20 X .250	63
-	1	1	-	23030-1	SCR, SKT HD CAP 6-32 X .25	62
-	1	1	-	22733-8	SCR, BHSC, SELF-LOCKING, 8-32 X .375	60
-	2	2	-	3-21000-0	SCR, SKT HD CAP 8-32 X .875	56
-	2	2	-	21018-4	NUT, HEX, REG 4-40	54
-	2	2	-	21022-2	NUT, LOCK, HEX, TORQUE, 8-32	53
-	2	2	-	2-21006-6	SCR, SET, CUP POINT 4-40 X .625	52
-	1	1	-	690191-1	PLUG, NYLON	45
-	1	1	-	455674-2	RAM	44
-	1	1	-	690125-1	SHIM SUB-ASSY	43
-	1	1	-	690124-1	WASHER, RAM (.115)	42
-	1	1	-	7-21002-9	SCR, BTN SKT HD CAP 5/16-24 X 1.00	41
-	1	1	-	23241-6	BALL, STEEL	40
-	1	1	-	690170-1	SPRING, COMPRESSION	39
-	1	1	-	690142-1	DISC, INSULATION	38
-	1	1	-	354777-1	WIRE DISC, ASSEMBLY	37
-	1	1	-	22480-5	SPRING, COMPRESSION	36
-	1	1	-	690212-1	POST, RAM	35
-	6	6	-	21024-4	WASHER, SPRG LOCK, REG NO 8	32
-	2	2	-	2-21002-9	SCR, BTN SKT HD CAP 10-32 X .750	31
-	2	2	-	2-21002-2	SCR, BTN SKT HD CAP 8-32 X .500	29
-	1	1	-	3-690451-2	SPACER, STRIPPER	28
-	1	1	-	240639-1	STRIPPER (MACHINING)	27
-	1	1	-	455676-1	PLATE, BASE	26
-	2	2	-	22354-7	STUD, THREADED	25
-	1	1	-	455678-1	PLATE, STRIP GUIDE	24
-	2	2	-	1-22281-5	SPRING, DRAG	22
-	1	1	-	454177-1	DRAG	20
-	1	1	-	458030-3	STRIP GUIDE, REAR	19
-	1	1	-	458031-3	STRIP GUIDE, FRONT	18
-	4	4	-	3-21002-3	SCR, BTN SKT HD CAP 1/4-20 X .500	17
-	1	1	-	1338708-1	SPACER, SLUG BLADE	16
-	1	1	-	1-690481-3	SPACER, HOLD DOWN	13
-	1	1	-	23846-1	SPRING, DIE	12
-	1	1	-	240644-1	PLATE, REAR SHEAR	11
-	1	1	-	3-690482-4	PLATE, FRONT SHEAR	9
-	1	1	-	1-1633249-7	ANVIL, COMBINATION	8
-	1	1	-	690474-6	BLADE, SLUG	7
-	1	1	-	6-455892-3	HOLD DOWN, TERMINAL	6
-	1	1	-	8-240641-9	SPACER	5
-	1	1	-	238009-1	BLOCK, FL CRIMPER SPACER	4
-	1	1	-	1-456134-9	CRIMPER, INSULATION F PREMIUM	3
-	1	1	-	455888-9	SPACER, CRIMPER	2
-	1	1	-	2-456405-9	CRIMPER, WIRE PREMIUM	1

REV	DATE	BY	CHKD	DESCRIPTION	ITEM NO
-77	-2	-1	U/M	PART NO	DESCRIPTION

Mouser Electronics

Authorized Distributor

Click to View Pricing, Inventory, Delivery & Lifecycle Information:

[TE Connectivity:](#)

[1852502-2](#)