

4

3

2

1


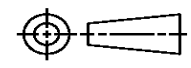
THIS DRAWING IS UNPUBLISHED.	RELEASED FOR PUBLICATION
© COPYRIGHT	ALL RIGHTS RESERVED.

LOC	DIST	REVISIONS			
P	LTR	DESCRIPTION	DATE	DWN	APVD
	C1	ECR-14-002785	24FEB2014	GK	HMR

# REPLACED BY OCEAN STYLE APPLICATOR PART NUMBER 2151437-1

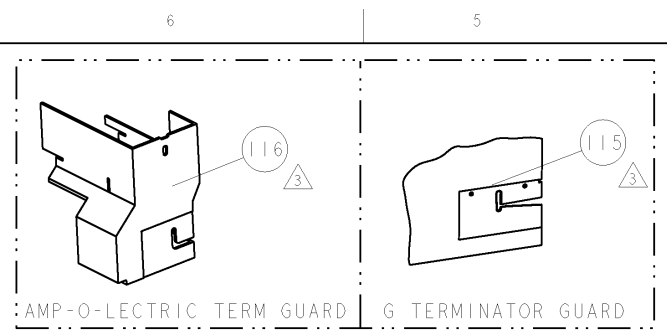
FOR REPLACEMENT PARTS FOR APPLICATOR 1852145  
REFER TO ADDITIONAL PAGE(S). SPARE PARTS KIT (IF LISTED)  
WILL REMAIN AVAILABLE.

THE REPLACEMENT OCEAN STYLE APPLICATOR HAS THE  
SAME TERMINATOR/PRESS INTERFACE AS APPLICATOR  
1852145

THIS DRAWING IS A CONTROLLED DOCUMENT.		DWN	GOPALAKRISHNA HV			TE Connectivity			
DIMENSIONS:		CHK	RAGHAVENDRA			NAME			
		TOLERANCES UNLESS OTHERWISE SPECIFIED:		APVD	RAGHAVENDRA				
		0 PLC	±	PRODUCT SPEC		APPLICATION SPEC			
MATERIAL		1 PLC	±	WEIGHT		SIZE	CAGE CODE	DRAWING NO	RESTRICTED TO
FINISH		2 PLC	±	CUSTOMER DRAWING		A3		©- 1852145	
		3 PLC	±	SCALE		SHEET 1 OF 2		REV	C1
		4 PLC	±						
		ANGLES	±						

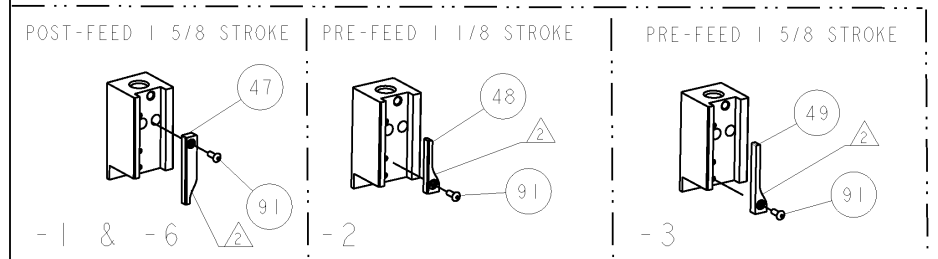
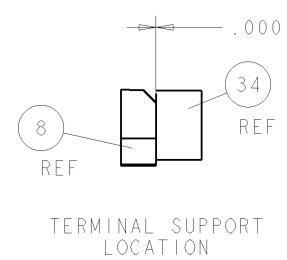
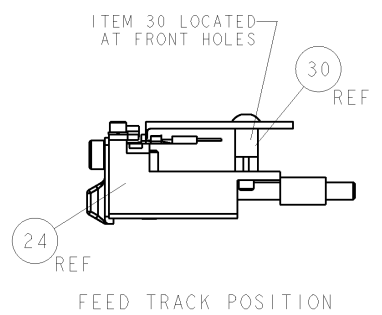
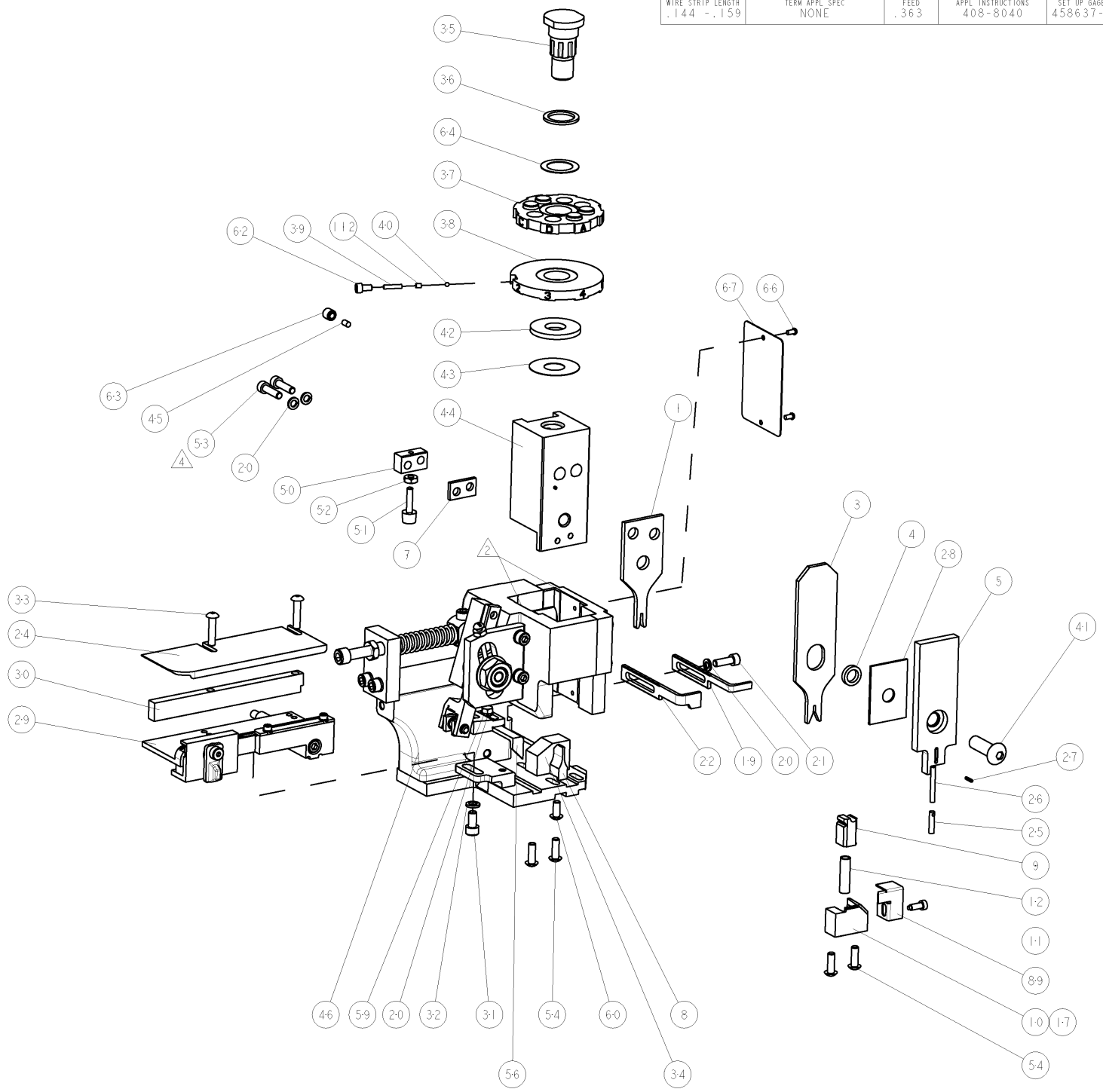
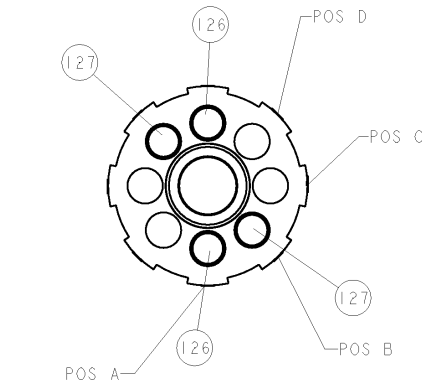
PART NUMBER	REV	FIRST USED	POWER UNIT	FEED TYPE	DESCRIPTION
1852145-1	C	122500-1	LEADMAKER	POST FEED	CUTS CARRIER
1852145-2	C	565435-5	BENCH MODEL K	PRE FEED	CUTS CARRIER
1852145-3	C	354500-1	BENCH MODEL G	PRE FEED	CUTS CARRIER
1852145-6	C	122500-1	LEADMAKER	POST FEED	CONTINUOUS CARRIER
7-1852145-7	C	-	-	-	SPARE PARTS

- △ RECOMMENDED SPARE PARTS
- △ GREASE LIGHTLY
- △ GUARD MUST BE IN PLACE WHEN OPERATING APPLICATOR IN A BENCH MACHINE
- △ CUT AT ASSY



TERMINAL NAME: 0.64 UNSEALED MALE/FEMALE TERMINAL					
TYCO PN	MANUF PN	SUMITOMO TERM - SUMITOMO CR SPECS			
1832148-1	8100-3623				
1832152-1	8100-3625				
-	-	PAD LTR	CRIMP HEIGHT	WIRE SIZE	
-	-	A	1.05±0.05mm [.041±.002]	.5 mm2	
-	-	B	.95±0.05mm [.037±.002]	.3 mm2	
-	-	C	-	-	
-	-	D	-	-	
-	-	CRIMP	SIZE	TYPE	RANGE
-	-	WIRE	1.40mm [.055]	F	.3-.5 mm2
-	-	INSUL	1.40mm [.055]	F	Ø1.78mm L.0703 MAX
WIRE STRIP LENGTH	TERM APPL SPEC	FEED	APPL INSTRUCTIONS	SET UP GAGE	
.144 -.159	NONE	.363	408-8040	458637-1	

REVISIONS					
REV	DATE	BY	CHKD	APPV	DESCRIPTION
A	19DEC2005	MEH	GB		RELEASED
B	07MAR2007	MEH	GB		ECR 07-005337
C	25MAY2010	RS	SX		REVISED ECR-10-017570



-	2	2	2	2	-	5-354779-2	PIN, WIRE DISC, .3250	127
-	2	2	2	2	-	4-354779-2	PIN, WIRE DISC, .3200	126
-	-	-	REF	-	-	455749-1	GUARD WINDOW	116
-	-	REF	-	-	-	679532-1	INSERT, GUARD	115
-	1	1	1	1	-	690603-1	SPRING ASSIST AMP-O-MATOR APPLICATOR	112
-	1	1	1	1	-	1-21002-7	SCR, BTN SKT HD CAP 6-32 X .375	91
-	1	1	1	1	-	318563-1	GUARD, FRONT CHIP	89
-	1	1	1	1	-	4088040	SF APPL INST 408-8040	72
-	1	1	1	1	-	217238-1	GENERAL INSTRUCTION PKG	71
-	1	1	1	1	-	461264-1	PLATE, IDENTIFICATION	67
-	2	2	2	2	-	21017-2	SCREW, DRIVE	66
-	1	1	1	1	-	986950-1	WASHER, FLAT PRECISION	64
-	1	1	1	1	-	21009-2	SCR, SET, SELF LOCKING 1/4-20 X .250	63
-	1	1	1	1	-	23030-1	SCR, SKT HD CAP 6-32 X .25	62
-	1	1	1	1	-	22733-8	SCR, BHSC, SELF-LOCKING, 8-32 X .375	60
-	1	1	1	1	-	2-22603-0	SCR, HEX HD CAP 8-32 X .312	59
-	1	1	1	1	-	458537-2	PAWL, FEED	56
-	4	4	4	4	-	2-21002-2	SCR, BTN SKT HD CAP 8-32 X .500	54
-	2	2	2	2	-	2-21000-8	SCR, SKT HD CAP 8-32 X .625	53
-	1	1	1	1	-	21018-5	NUT, HEX, REG 6-32	52
-	1	1	1	1	-	811242-2	BUMPER, HOLD DOWN	51
-	1	1	1	1	-	690753-1	SPACER, TONKER	50
-	-	-	-	-	-	690602-6	CAM, PRE FEED, 1/8	49
-	-	-	-	-	-	690602-5	CAM, PRE FEED, 1/8	48
-	-	-	-	-	-	690501-4	CAM, POST-FEED 1/8	47
-	1	1	1	1	-	459456-1	APPL, BASIC SUB ASSY (SIDE WISE MOCA)	46
-	1	1	1	1	-	690191-1	PLUG, NYLON	45
-	1	1	1	1	-	455673-1	RAM, SIDE FEED	44
-	1	1	1	1	-	690125-1	SHIM SUB-ASSY	43
-	1	1	1	1	-	690124-1	WASHER, RAM (.115)	42
-	1	1	1	1	-	7-21002-9	SCR, BTN SKT HD CAP 5/16-24 X 1.00	41
-	1	1	1	1	-	23241-6	BALL, STEEL	40
-	1	1	1	1	-	690170-1	SPRING, COMPRESSION	39
-	1	1	1	1	-	690142-1	DISC, INSULATION	38
-	1	1	1	1	-	354777-1	WIRE DISC, ASSEMBLY	37
-	1	1	1	1	-	22480-5	SPRING, COMPRESSION	36
-	1	1	1	1	-	690212-1	POST, RAM	35
-	1	1	1	1	-	690786-3	TERMINAL SUPPORT	34
-	2	2	2	2	-	2-21002-4	SCR, BTN SKT HD CAP 8-32 X .750	33
-	1	1	1	1	-	21024-5	WASHER, SPRG LOCK, REG NO 10	32
-	1	1	1	1	-	3-21000-4	SCR, SKT HD CAP 10-32 X .375	31
-	1	1	1	1	-	1320908-4	SPACER, STRIP GUIDE	30
-	1	1	1	1	-	1633091-1	ASSEMBLY, STRIP GUIDE	29
-	1	1	1	1	-	1-455888-0	SPACER, CRIMPER	28
-	1	1	1	1	-	21028-2	PIN, SLOTTED SPRING .062 X .250	27
-	1	1	1	1	-	5-547505-2	SPRING, COMPRESSION	26
-	1	1	1	1	-	854769-1	HOLDER, INS	25
-	1	1	1	1	-	1320928-3	PLATE, STRIP GUIDE	24
-	-	-	-	-	-	691353-1	STRIPPER	22
-	1	1	1	1	-	2-21000-7	SCR, SKT HD CAP 8-32 X .500	21
-	4	4	4	4	-	21024-4	WASHER, SPRG LOCK, REG NO 8	20
-	1	1	1	1	-	690472-2	STRIPPER	19
-	1	1	1	1	-	679625-1	SHEAR HOLDER, FRONT (NO CUT)	17
-	1	1	1	1	-	3-22280-3	SPRING, COMPRESSION	12
-	1	1	1	1	-	690461-1	STOP, SHEAR	11
-	-	-	-	-	-	690459-1	SHEAR HOLDER, FRONT	10
-	1	1	1	1	-	462006-1	FLOATING SHEAR, FRONT	9
-	1	1	1	1	-	2-1633117-6	ANVIL, COMBINATION	8
-	1	1	1	1	-	240641-9	SPACER	7
-	1	1	1	1	-	854772-1	DEPRESSOR, SHEAR	5
-	1	1	1	1	-	3-238011-3	BLOCK, CRIMPER SPACER	4
-	1	1	1	1	-	2-679440-9	CRIMPER, INSULATION F	3
-	1	1	1	1	-	456402-6	CRIMPER, WIRE PREMIUM	1

DIMENSIONS: INCHES		TOLERANCES UNLESS OTHERWISE SPECIFIED:		MATERIAL	
0 PLC	±	0.001		FINISH	
1 PLC	±	0.001			
2 PLC	±	0.001			
3 PLC	±	0.001			
4 PLC	±	0.001			
MATERIAL		FINISH		WEIGHT	
CUSTOMER DRAWING		SCALE		SHEET	
		3:5		1 OF 1	
CUSTOMER DRAWING		SCALE		SHEET	
		3:5		1 OF 1	

DIMENSIONS: INCHES  
 TOLERANCES UNLESS OTHERWISE SPECIFIED:  
 0 PLC ± 0.001  
 1 PLC ± 0.001  
 2 PLC ± 0.001  
 3 PLC ± 0.001  
 4 PLC ± 0.001  
 MATERIAL: FINISH: WEIGHT:

CUSTOMER DRAWING SCALE 3:5 SHEET 1 OF 1 REV C

CUSTOMER VIEWABLE ASSEMBLY

# Mouser Electronics

Authorized Distributor

Click to View Pricing, Inventory, Delivery & Lifecycle Information:

[TE Connectivity:](#)

[1852145-1](#)