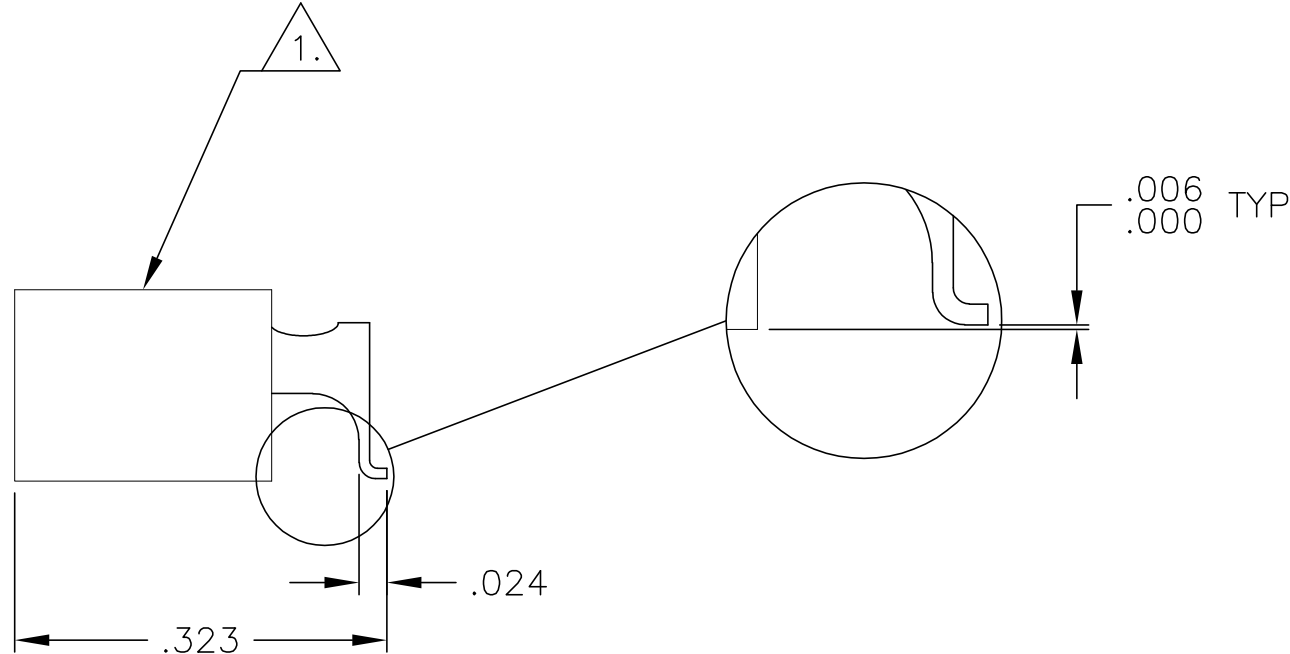
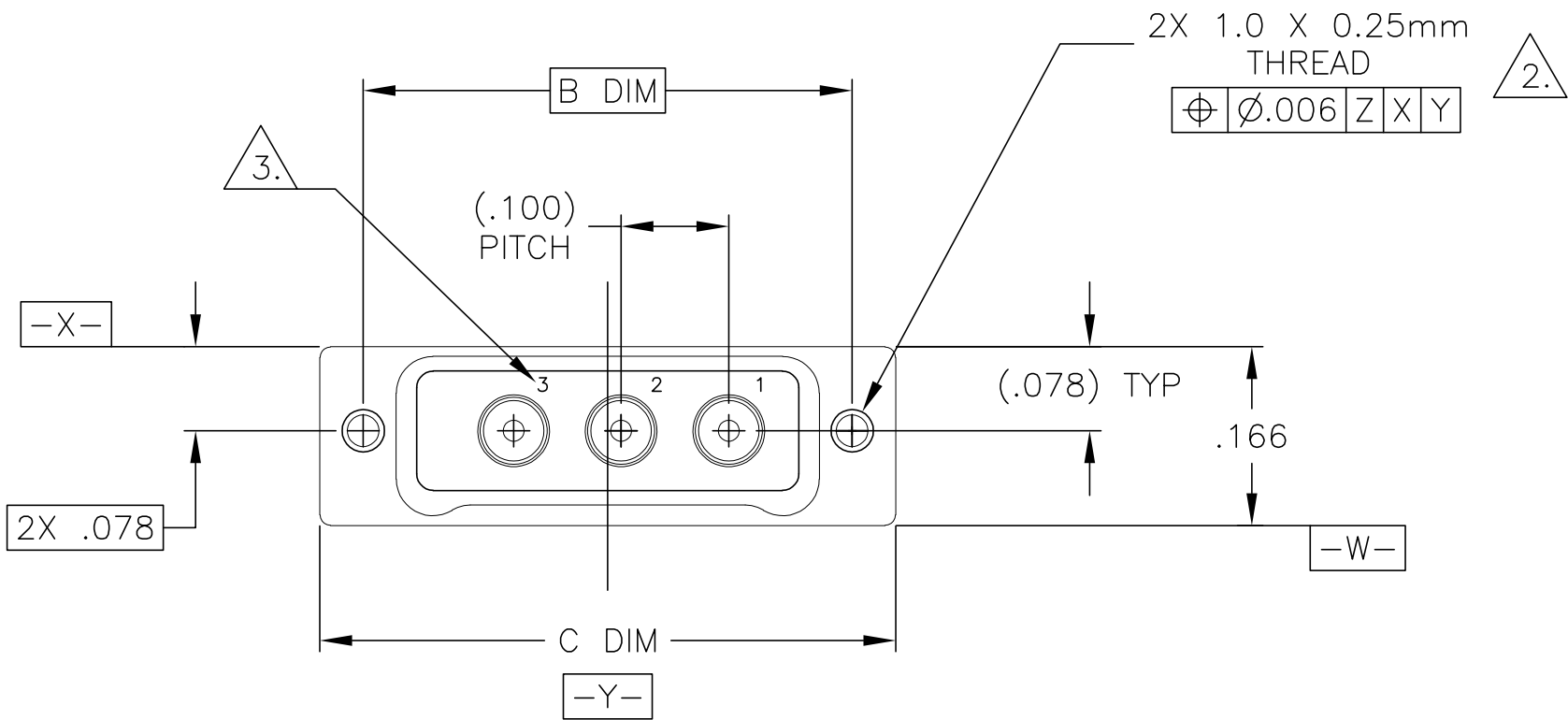
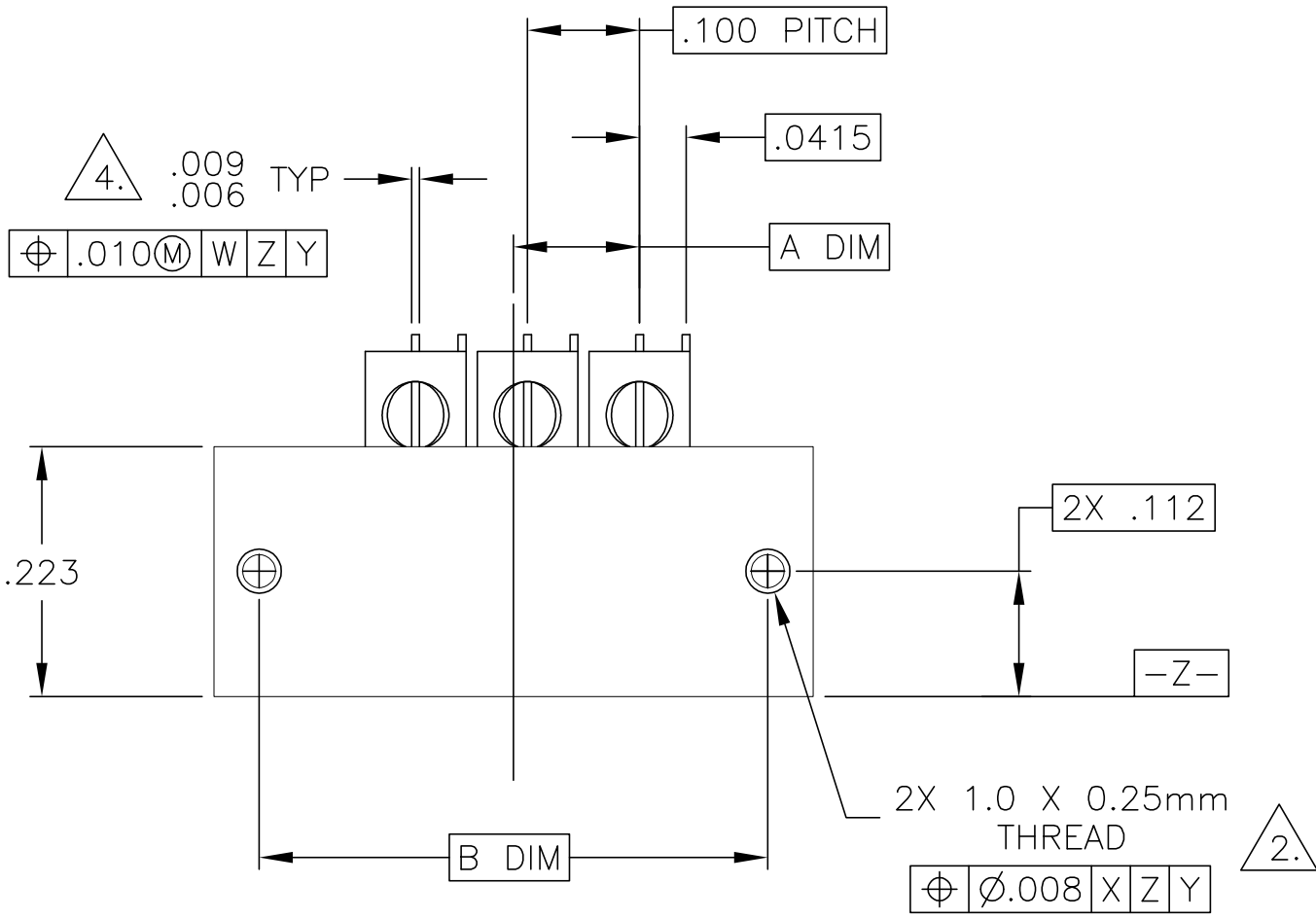


LOC —	DIST —	REVISIONS					
		P	LTR	DESCRIPTION	DATE	DWN	APVD
			H2	REVISED PER ECO-11-005139	21MAR11	RK	HMR

No. COAX POSITIONS	A DIM	B DIM	C DIM
1	.0125	.254	.335
2	.0625	.354	.435
3	.1125	.454	.535
4	.1625	.554	.635
5	.2125	.654	.735
6	.2625	.754	.835
7	.3125	.854	.935
8	.3625	.954	1.035
9	.4125	1.054	1.135



1. SHELL MATERIAL: 6061-T6 ALUMINUM, ELECTROLESS NICKEL PLATED PER SAE-AMS-C-26074
INSULATOR MATERIAL: LIQUID CRYSTAL POLYMER (LCP) PER MIL-M-24519 OR PER ASTM D 5138
2. STANDARD 1.0 X 0.25mm MOUNTING AND JACKSCREW THREADS ARE SHOWN FOR REFERENCE ONLY AND MUST BE SPECIFIED IN THE NANONICS PART NUMBER WHEN REQUIRED. 1.2 X 0.25mm THREADS ALSO AVAILABLE
3. CONTACT NUMBERS ARE FOR REFERENCE ONLY AND ARE NOT MARKED ON THE PART
4. LEAD MATERIAL: HH BRASS, TIN LEAD PLATED 60/40 COMPOSITION PER SAE-AMS-P-81728
5. MOUNTING HARDWARE IS AVAILABLE WITH THIS CONFIGURATION (NOT SHOWN). HARDWARE MUST BE SPECIFIED IN THE NANONICS PART NUMBER. CONSULT TE CONNECTIVITY FOR DETAILS
6. THIS DRAWING PREVIOUSLY IDENTIFIED AS NANONICS 303-0052.

THIS DRAWING IS A CONTROLLED DOCUMENT.

DIMENSIONS:
INCHES

MATERIAL

SEE NOTES

TOLERANCES UNLESS OTHERWISE SPECIFIED:

0 PLC	±	-
1 PLC	±	-
2 PLC	±	.010
3 PLC	±	.005
4 PLC	±	-
ANGLES	±	1°

FINISH

SEE NOTES

DWN
D. RYAN
1 SEP 99

CHK
E. PAULUS
1 OCT 99

APVD
—

PRODUCT SPEC
—

APPLICATION SPEC
—

WEIGHT
—

CUSTOMER DRAWING

TE Connectivity

RECEPTACLE ASSEMBLY,
HORIZONTAL SMT, 1-9 COAX ONLY,
50 OHM, METAL

SIZE
A2

CAGE CODE
00779

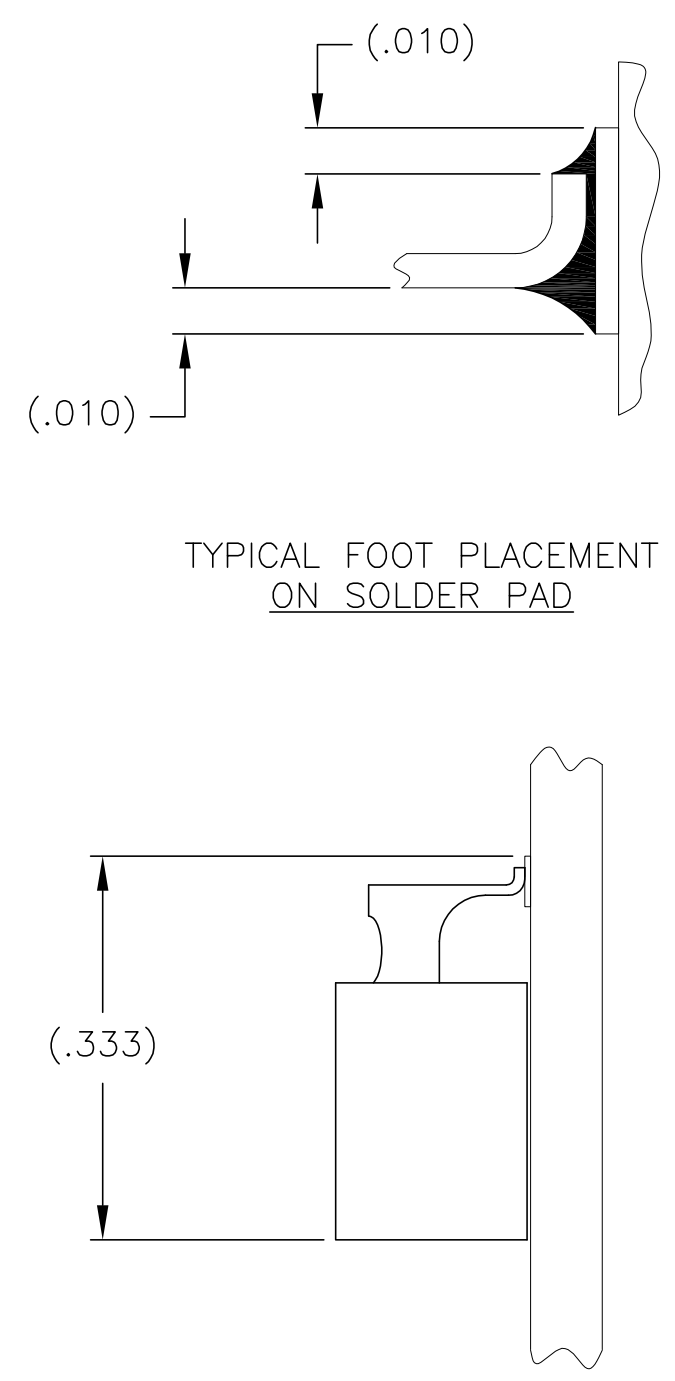
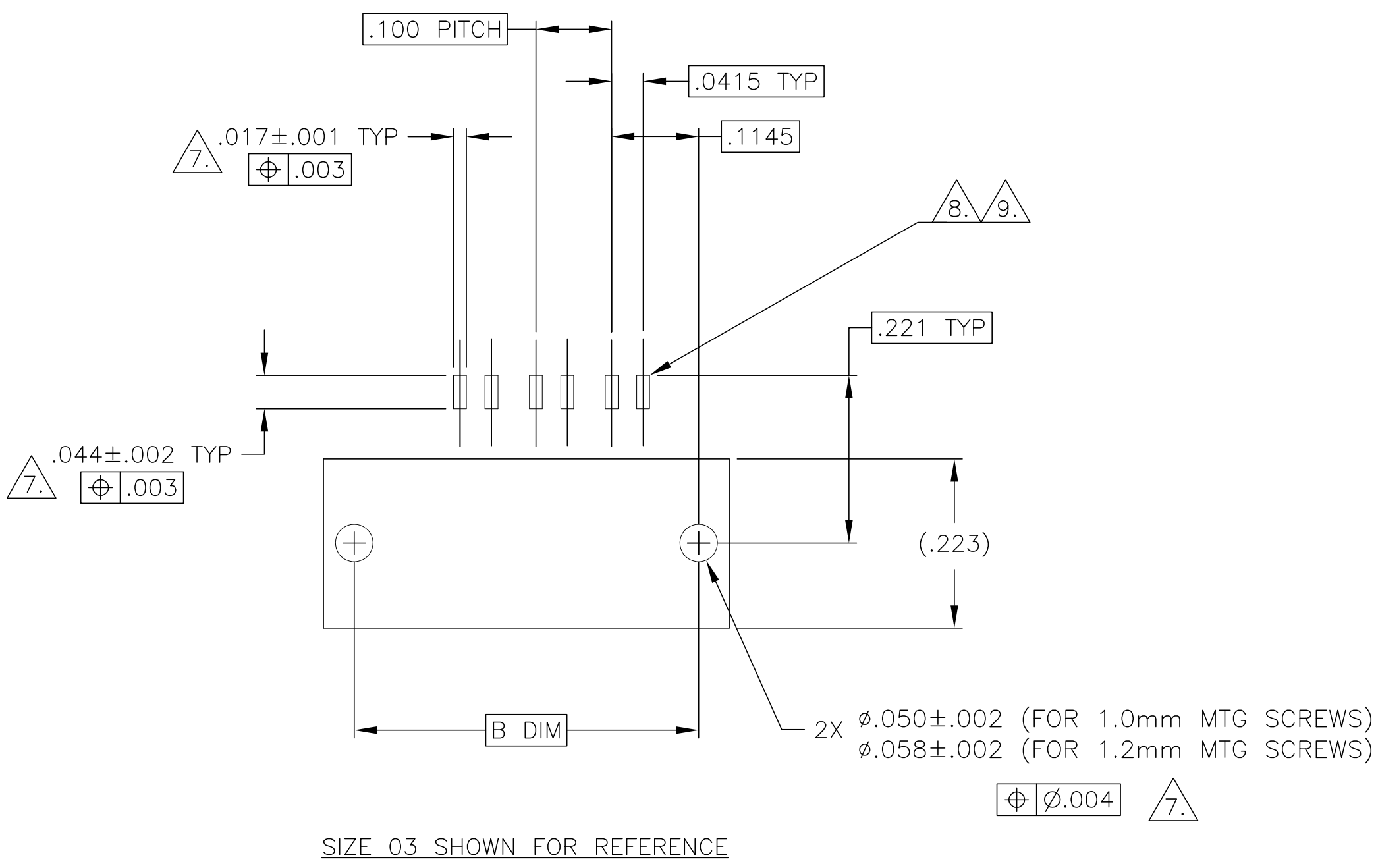
DRAWING NO
C=1589072

RESTRICTED TO
—

SCALE
6:1

SHEET
1 of 2

REV
H2



- 7. POSITIONAL TOLERANCES FOR BASIC DIMENSIONED FEATURES ARE RELATIVE TO FIDUCIALS OR SOME SIMILAR DATUM REFERENCES DEFINED BY PCB DESIGNER.
- 8. SOLDER PADS.
- 9. TWO SOLDER PADS ARE REQUIRED FOR EACH COAX CONTACT.

THIS DRAWING IS A CONTROLLED DOCUMENT.

DWN
D. RYAN
1 SEP 99

CHK
E. PAULUS
1 OCT 99

APVD
—

TE Connectivity

RECEPTACLE ASSEMBLY,
HORIZONTAL SMT, 1–9 COAX ONLY,
50 OHM, METAL

SIZE
A2

CAGE CODE
00779

DRAWING NO
C=1589072

RESTRICTED TO
—

CUSTOMER DRAWING

SCALE
6:1

SHEET
2 OF 2

REV
H2

Mouser Electronics

Authorized Distributor

Click to View Pricing, Inventory, Delivery & Lifecycle Information:

[TE Connectivity:](#)

[CX050L2HN](#)