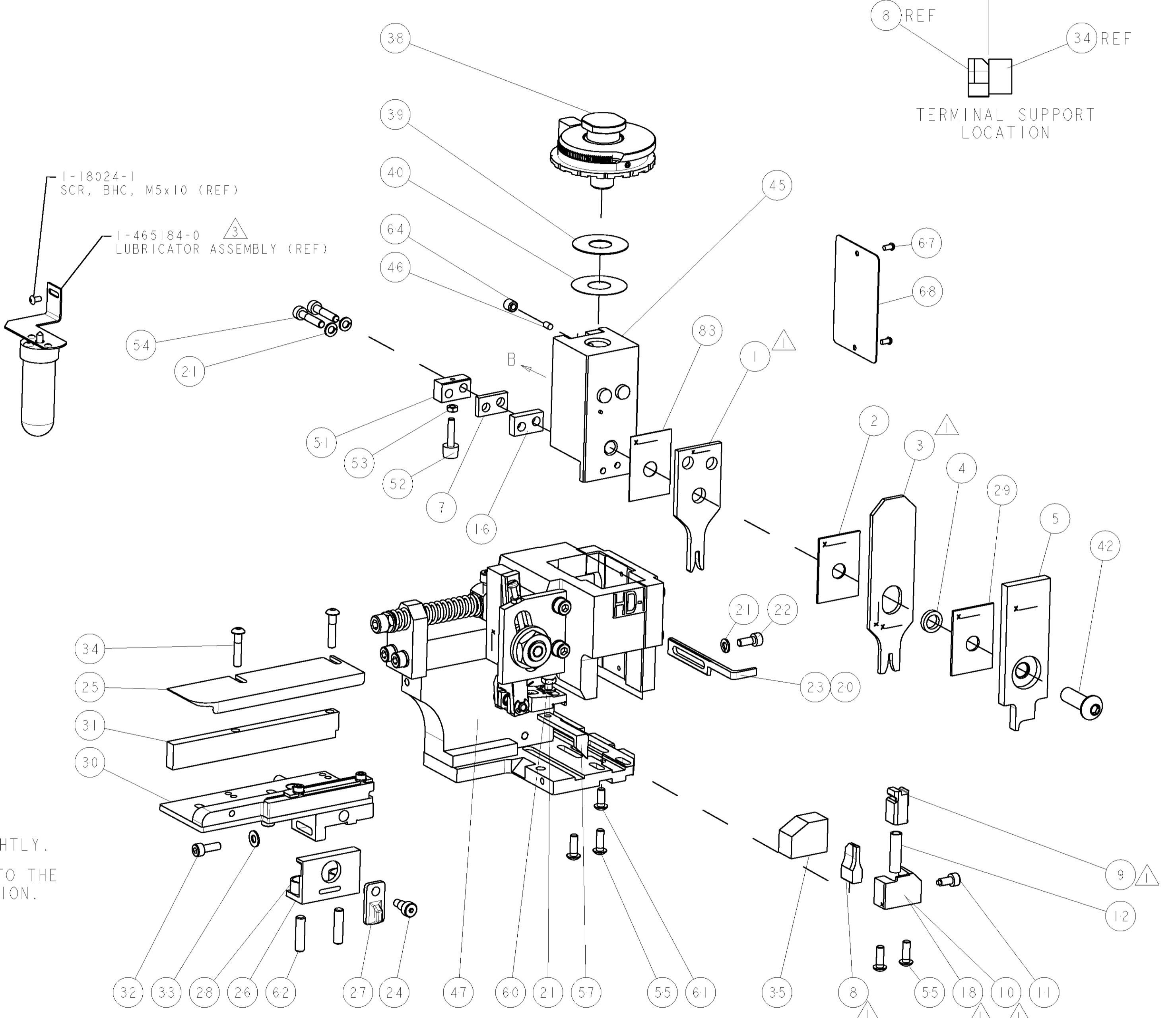
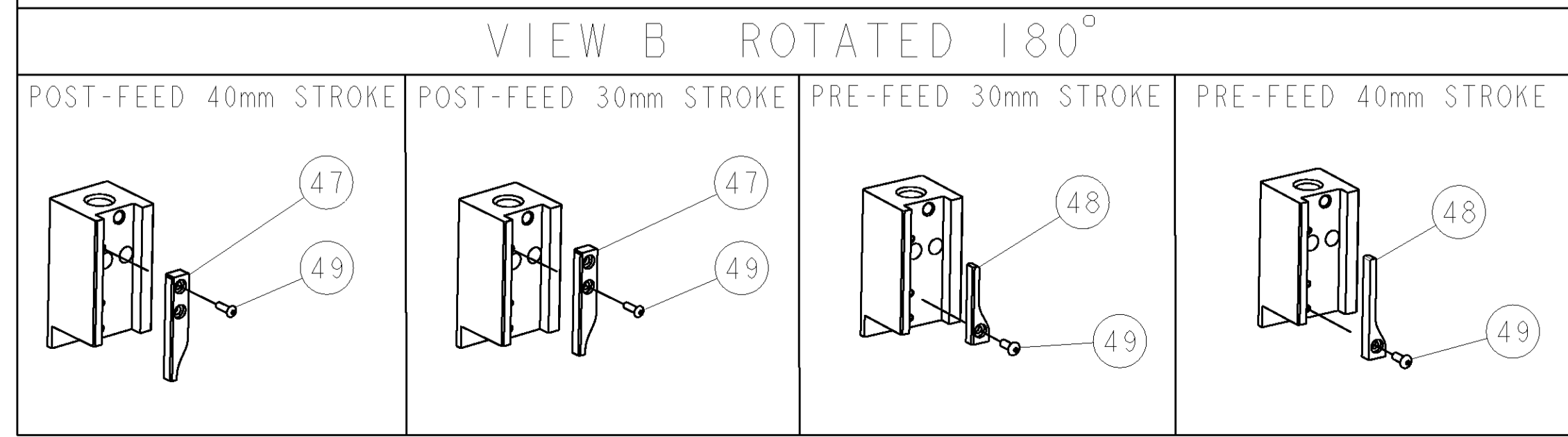


PART NUMBER	REV	TERMINATOR	FEED TYPE	DESCRIPTION
1530093-1	A	LEADMAKER	MECH POST FEED	CUTS CARRIER
1530093-2	A	BENCH	MECH PRE FEED	CUTS CARRIER
1530093-6	A	LEADMAKER	MECH POST FEED	CONTINUOUS CARRIER
7-1530093-1	A	LEADMAKER	MECH POST FEED	-1 AND SPARE PARTS
7-1530093-2	A	BENCH	MECH PRE FEED	-2 AND SPARE PARTS
7-1530093-6	A	LEADMAKER	MECH POST FEED	-6 AND SPARE PARTS
7-1530093-7	A	-	-	SPARE PARTS KIT

CRIMP DATA		FORD TERMINAL		TE CRIMP SPECS	
TERMINAL NAME: TERMINAL					
CRIMP	SIZE	TYPE	RANGE		
WIRE	1.83 [0.072 IN]	F	0.51mm ² or 20 AWG		
INSUL	2.29 [0.090 IN]	F	2.03 [0.080 IN]		
WIRE STRIP LENGTH 4.27-5.03[.168-.198 IN]		APPL INSTRUCTIONS 408-8322 & 408-8490			
TERMINAL APPL SPEC		NONE	FEED		13.08 [0.515 IN]
TERMINALS APPLIED					
1949917-1	-	-	-	-	-
-	-	-	-	-	-
-	-	-	-	-	-
-	-	-	-	-	-
-	-	-	-	-	-
WIRE SIZE	CRIMP HEIGHT	REF SETTING			
0.51mm ² (20AWG)	1.14 ± 0.05 [0.045 ± 0.002 IN]	D3			
-	-	-		-	
-	-	-		-	
-	-	-		-	
-	-	-		-	
-	-	-		-	
-	-	-		-	
-	-	-		-	
-	-	-		-	

- △ RECOMMENDED SPARE PARTS.
- 2. GREASE RAM, CAM, CAM FOLLOWER AND FEED ROD LIGHTLY.
- △ CERTAIN TERMINALS REQUIRE LUBRICATION. REFER TO THE APPLICATOR INSTRUCTION SHEET FOR MORE INFORMATION.
- 4. LUBRICATE DAILY PER THE APPLICATOR INSTRUCTION SHEET SUPPLIED WITH THE APPLICATOR.



* WARNING
ON INSTALLATION, SET WIRE DISC TO LARGEST WIRE SIZE SETTING. USE OF SETTINGS BELOW MIN. REQUIRED CRIMP HEIGHT SETTING WILL CAUSE DAMAGE TO CRIMP TOOLING.

PART NO	DESCRIPTION	ITEM NO
-77 -76 -72 -71 -6 -2 -1	PART NO	85
-	-	84
-	455888-3	83
-	-	82
-	-	81
-	-	80
-	-	79
-	-	78
-	-	77
-	-	76
-	-	75
-	-	74
-77 -76 -72 -71 -6 -2 -1	PART NO	DESCRIPTION
-	-	ITEM NO

SET UP GAGE
458637-3

LOC A DIST 66

REVISIONS			
REV	DATE	BY	DESCRIPTION
A	24MAR2009	DWM	RELEASED

REV	DATE	BY	DESCRIPTION	ITEM NO
-	-	-	-	73
-	-	-	-	72
-	-	-	-	71
-	-	-	-	70
-	-	-	-	69
-	-	-	-	68
-	-	-	-	67
-	-	-	-	66
-	-	-	-	65
-	-	-	-	64
-	-	-	-	63
-	-	-	-	62
-	-	-	-	61
-	-	-	-	60
-	-	-	-	59
-	-	-	-	58
-	-	-	-	57
-	-	-	-	56
-	-	-	-	55
-	-	-	-	54
-	-	-	-	53
-	-	-	-	52
-	-	-	-	51
-	-	-	-	50
-	-	-	-	49
-	-	-	-	48
-	-	-	-	47
-	-	-	-	46
-	-	-	-	45
-	-	-	-	44
-	-	-	-	43
-	-	-	-	42
-	-	-	-	41
-	-	-	-	40
-	-	-	-	39
-	-	-	-	38
-	-	-	-	37
-	-	-	-	36
-	-	-	-	35
-	-	-	-	34
-	-	-	-	33
-	-	-	-	32
-	-	-	-	31
-	-	-	-	30
-	-	-	-	29
-	-	-	-	28
-	-	-	-	27
-	-	-	-	26
-	-	-	-	25
-	-	-	-	24
-	-	-	-	23
-	-	-	-	22
-	-	-	-	21
-	-	-	-	20
-	-	-	-	19
-	-	-	-	18
-	-	-	-	17
-	-	-	-	16
-	-	-	-	15
-	-	-	-	14
-	-	-	-	13
-	-	-	-	12
-	-	-	-	11
-	-	-	-	10
-	-	-	-	9
-	-	-	-	8
-	-	-	-	7
-	-	-	-	6
-	-	-	-	5
-	-	-	-	4
-	-	-	-	3
-	-	-	-	2
-	-	-	-	1
-77 -76 -72 -71 -6 -2 -1	PART NO	DESCRIPTION	ITEM NO	

DIMENSIONS: mm [IN]		TOLERANCES UNLESS OTHERWISE SPECIFIED:	
9 PLC	±	9 PLC	±
1 PLC	±	1 PLC	±
2 PLC	±	2 PLC	±
3 PLC	±	3 PLC	±
4 PLC	±	4 PLC	±
ANGLES	±	ANGLES	±

MATERIAL	FINISH	WEIGHT	CUSTOMER DRAWING
-	-	-	-

DRW NO	02MAR2009	DRW	02MAR2009
CHK	G. BAILEY	CHK	02MAR2009
APVD	J. ELBIN	APVD	02MAR2009
PRODUCT SPEC		NAME	
APPLICATION SPEC		FINE ADJUST SIDE FEED HDI APPLICATOR	
See Table	SIZE	CAGE CODE	DRAWING NO
-	A1	00779	1530093
RESTRICTED TO		SCALE	
-		3:5	

Mouser Electronics

Authorized Distributor

Click to View Pricing, Inventory, Delivery & Lifecycle Information:

[TE Connectivity:](#)

[7-1530093-7](#)