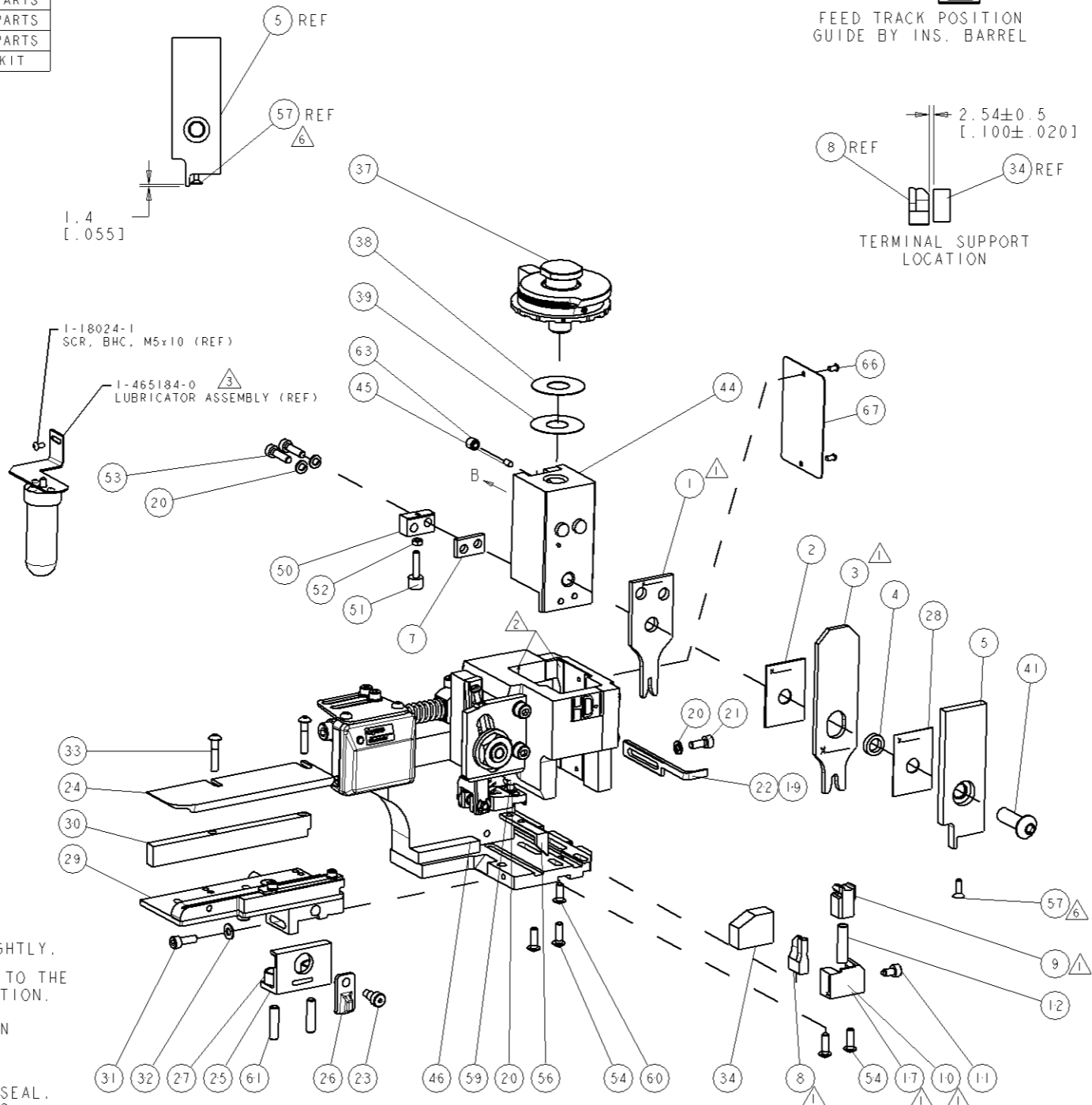


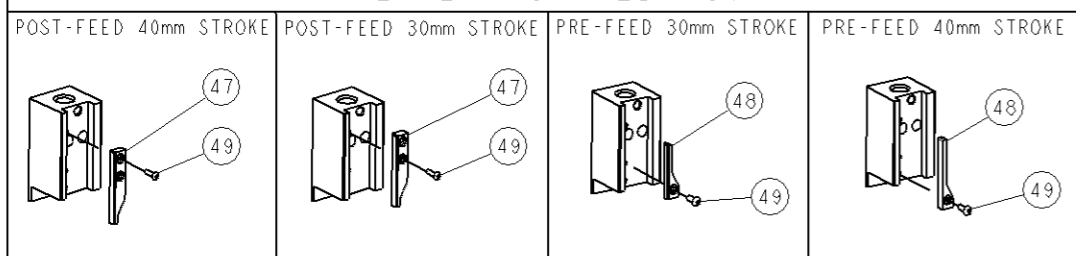
PART NUMBER	REV	TERMINATOR	FEED TYPE	DESCRIPTION
1530043-1	A	LEADMAKER	MECH POST FEED	CUTS CARRIER
1530043-2	A	BENCH	MECH PRE FEED	CUTS CARRIER
1530043-6	A	LEADMAKER	MECH POST FEED	CONTINUOUS CARRIER
7-1530043-1	A	LEADMAKER	MECH POST FEED	-1 AND SPARE PARTS
7-1530043-2	A	BENCH	MECH PRE FEED	-2 AND SPARE PARTS
7-1530043-6	A	LEADMAKER	MECH POST FEED	-6 AND SPARE PARTS
7-1530043-7	A	-	-	SPARE PARTS KIT

CRIMP DATA	LEAR TERMINAL	CUSTOMER CRIMP SPECS
TERMINAL NAME: LEAR MDKS PLUS TERMINAL		
CRIMP	SIZE	TYPE
WIRE	1.79 [ .070 IN ]	F
INSUL	4.01 [ .158 IN ]	Ø
WIRE STRIP LENGTH		APPL INSTRUCTIONS
4.35-4.73 [ .171-.186 IN ]		408-8322 & 408-8490
TERMINAL APPL SPEC	NONE	FEED 13.49 [ .531 IN ]
TERMINALS APPLIED		
TE PN	1949701	1949848
MFR PN	26628.331.179	16695.627.619
MFR PN	26402-XXX-XXX	16276.627.642
WIRE SIZE	CRIMP HEIGHT	REF SETTINGS
1.00mm <sup>2</sup>	1.30 ± 0.05 [ .051 ± .002 IN ]	C2
0.75mm <sup>2</sup>	1.25 ± 0.05 [ .049 ± .002 IN ]	C5
0.50mm <sup>2</sup>	1.20 ± 0.05 [ .047 ± .002 IN ]	C9



**\* WARNING**  
ON INSTALLATION, SET WIRE STOP DISC TO LARGEST WIRE SIZE SETTING. USE OF SETTINGS BELOW MIN. REQUIRED CRIMP HEIGHT SETTING WILL CAUSE DAMAGE TO CRIMP TOOLING.

VIEW B ROTATED 180°



ITEM NO	PART NO	DESCRIPTION
84		
83		
82		
81		
80		
79		
78		
77		
76		
75		
74		
ITEM NO	PART NO	DESCRIPTION
-77	-76	-72
-71	-6	-2
-1		

SET UP GAGE  
458637-3

REV	DESCRIPTION	DATE	BY	APPV
A	RELEASED	28JAN2008	RK	TE
A1	REVISED ECR-10-021167	14OCT2018	XZ	SX

ITEM NO	PART NO	DESCRIPTION	ITEM NO
73			
72			
71	1338705-3	DOCUMENTATION PACKAGE	
70			
69			
68			
67	461264-5	PLATE, IDENTIFICATION	
66	21017-2	SCREW, DRIVE	
65			
64			
63	3-18031-0	SCR, SET, CUP POINT M6 X 6.0	
62			
61	2-18032-5	SCR, SET, FLT POINT M5 X 20.0	
60	18024-7	SCR, BTN SKT HD CAP (M4 X 10.0)	
59	5-18022-2	SCR, HEX HD CAP M4 X 8.0	
58			
57	985575-3	SCR, FLT SKT HD CAP M3 X 10.0	
56	1338685-1	PAWL, FEED	
55			
54	18024-8	SCR, BTN SKT HD CAP (M4 X 12.0)	
53	1-18023-3	SCR, SKT HD CAP M4 X 16.0	
52	18030-1	NUT, HEX, REG M3	
51	811242-5	BUMPER, HOLD DOWN	
50	690753-2	SPACER, TONKER	
49	18024-3	SCR, BTN SKT HD CAP (M3 X 10.0)	
48	1338675-1	CAM, UNIVERSAL PRE FEED	
47	1338676-1	CAM, UNIVERSAL POST-FEED	
46	1320999-3	APPLICATOR SUBASSEMBLY, HDI	
45	690191-1	PLUG, NYLON	
44	1338660-1	RAM	
43			
42			
41	2-18024-6	SCR, BTN SKT HD CAP (M8 X 25.0)	
40			
39	690125-1	SHIM SUB-ASSY	
38	1-469367-0	SHIM	
37	879103-2	FINE ADJUST HEAD ASSEMBLY	
36			
35			
34	2-1320934-5	SUPPORT, TERMINAL	
33	1-18024-0	SCR, BTN SKT HD CAP (M4 X 20.0)	
32	18027-2	WASHER, FLAT, REG M4	
31	1-18023-2	SCR, SKT HD CAP M4 X 12.0	
30	1320908-1	SPACER, STRIP GUIDE	
29	1633073-2	STRIP GUIDE ASSEMBLY	
28	455888-5	SPACER, CRIMPER	
27	1-22284-0	SPRING, COMPRESSION	
26	356835-1	LEVER, DRAG RELEASE	
25	240792-1	DRAG, TERMINAL	
24	1320928-1	PLATE, STRIP GUIDE	
23	980371-4	SCR, SKT HD SHLDR 5.0 DIA X 6.0	
22	690472-2	STRIPPER	
21	1-18023-1	SCR, SKT HD CAP M4 X 10.0	
20	18025-2	WASHER, SPRG LOCK, REG M4	
19	690472-1	STRIPPER	
18			
17	1338684-2	SHEAR HOLDER, FRONT	
16			
15			
14			
13			
12	3-22280-3	SPRING, COMPRESSION	
11	356885-5	STOP, SHEAR	
10	1-1320921-0	SHEAR HOLDER, FRONT, CUT	
9	318707-9	FLOATING SHEAR, FRONT	
8	2-1633703-2	ANVIL, COMBINATION	
7	240641-5	SPACER	
6			
5	1338680-2	DEPRESSOR, SHEAR	
4	238011-2	BLOCK, CRIMPER SPACER	
3	1-1633589-8	CRIMPER, INSULO	
2	1-455888-0	SPACER, CRIMPER	
1	5-456404-5	CRIMPER, WIRE PREMIUM	

ITEM NO	PART NO	DESCRIPTION	ITEM NO
84			
83			
82			
81			
80			
79			
78			
77			
76			
75			
74			
ITEM NO	PART NO	DESCRIPTION	ITEM NO
-77	-76	-72	
-71	-6	-2	
-1			

# Mouser Electronics

Authorized Distributor

Click to View Pricing, Inventory, Delivery & Lifecycle Information:

[TE Connectivity:](#)

[1530043-2](#)