

4

3

2

1

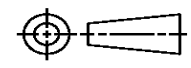
THIS DRAWING IS UNPUBLISHED. RELEASED FOR PUBLICATION
 © COPYRIGHT ALL RIGHTS RESERVED.

LOC	DIST	REVISIONS			
P	LTR	DESCRIPTION	DATE	DWN	APVD
	A2	ECR-14-001323	29JAN2014	GK	HMR

REPLACED BY OCEAN STYLE APPLICATOR PART NUMBER 2151426-2

FOR REPLACEMENT PARTS FOR APPLICATOR 1528792 REFER TO ADDITIONAL PAGE(S). SPARE PARTS KIT (IF LISTED) WILL REMAIN AVAILABLE.

THE REPLACEMENT OCEAN STYLE APPLICATOR HAS THE SAME TERMINATOR/PRESS INTERFACE AS APPLICATOR 1528792

THIS DRAWING IS A CONTROLLED DOCUMENT.		DWN	GOPALAKRISHNA HV		
DIMENSIONS:		CHK	RAGHAVENDRA		
		APVD	RAGHAVENDRA		
TOLERANCES UNLESS OTHERWISE SPECIFIED:		PRODUCT SPEC	NAME		
0 PLC	±	APPLICATION SPEC	FINE ADJUST SIDE FEED HDI APPLICATOR		
1 PLC	±		SIZE	CAGE CODE	DRAWING NO
2 PLC	±		A3		©- 1528792
3 PLC	±				RESTRICTED TO
4 PLC	±				
ANGLES	±	WEIGHT			
MATERIAL	FINISH	CUSTOMER DRAWING	SCALE	SHEET 1 OF 2	REV A2



PART NUMBER	REV	TERMINATOR	FEED TYPE	DESCRIPTION
1528792-1	A	LEADMAKER	MECH POST FEED	CUTS CARRIER
1528792-2	A	BENCH	MECH PRE FEED	CUTS CARRIER
1528792-6	A	LEADMAKER	MECH POST FEED	CONTINUOUS CARRIER
7-1528792-1	A	LEADMAKER	MECH POST FEED	-1 AND SPARE PARTS
7-1528792-2	A	BENCH	MECH PRE FEED	-2 AND SPARE PARTS
7-1528792-6	A	LEADMAKER	MECH POST FEED	-6 AND SPARE PARTS
7-1528792-7	A	-	-	SPARE PARTS KIT

CRIMP	SIZE	TYPE	RANGE
WIRE	3.56 [.140 IN]	F	16 AWG-12 AWG
INSUL	5.33 [.210 IN]	O	3.68-4.06 [.145-.160 IN]
WIRE STRIP LENGTH	6.35-7.93 [.250-.312 IN]		APPL INSTRUCTIONS 408-8322 & 408-8490
TERMINAL APPL SPEC	114-10005		FEED 21.60 [.850 IN]

WIRE SIZE	CRIMP HEIGHT	REF SETTING
12 AWG	2.59 ±0.05 [.102 ±.002 IN]	B0
2.5mm ²	2.46 ±0.05 [.097 ±.002 IN]	B7
14 AWG	2.34 ±0.05 [.092 ±.002 IN]	C7
16 AWG	2.16 ±0.05 [.085 ±.002 IN]	D9



RECOMMENDED SPARE PARTS.

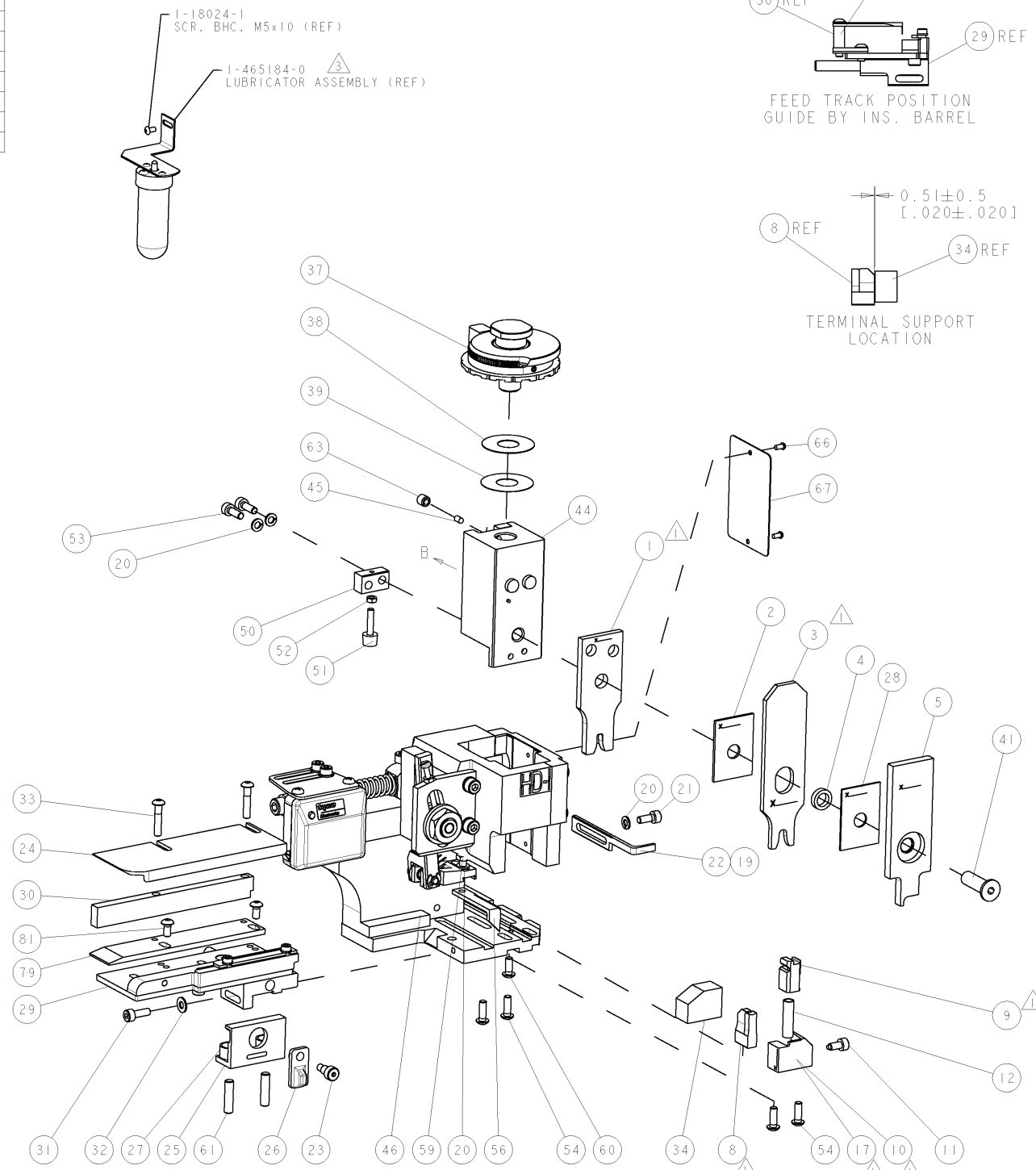
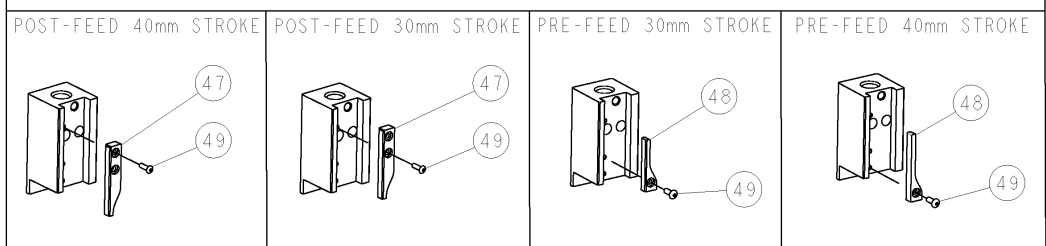
2. GREASE RAM, CAM, CAM FOLLOWER AND FEED ROD LIGHTLY.

CERTAIN TERMINALS REQUIRE LUBRICATION. REFER TO THE APPLICATOR INSTRUCTION SHEET FOR MORE INFORMATION.

4. LUBRICATE DAILY PER THE APPLICATOR INSTRUCTION SHEET SUPPLIED WITH THE APPLICATOR.

*** WARNING**
ON INSTALLATION, SET WIRE DISC TO LARGEST WIRE SIZE SETTING. USE OF SETTINGS BELOW MIN. REQUIRED CRIMP HEIGHT SETTING WILL CAUSE DAMAGE TO CRIMP TOOLING.

VIEW B ROTATED 180°



PART NO	DESCRIPTION	ITEM NO
-	-	84
-	-	83
-	-	82
2	2	81
-	-	80
1	1	79
-	-	78
-	-	77
-	-	76
-	-	75
-	-	74
-77	-76	-71
-6	-2	-1
PART NO	DESCRIPTION	ITEM NO

REV	DATE	BY	CHK	DESCRIPTION
A1	05SEP2008			ECR-08-022480

REV	DATE	BY	CHK	DESCRIPTION	ITEM NO
-	-	-	-	-	73
-	-	-	-	-	72
1	1	1	1	1338705-3	71
-	-	-	-	-	70
-	-	-	-	-	69
-	-	-	-	-	68
1	1	1	1	461264-5	67
2	2	2	2	21017-2	66
-	-	-	-	-	65
-	-	-	-	-	64
1	1	1	1	3-18031-0	63
-	-	-	-	-	62
2	2	2	2	2-18032-5	61
1	1	1	1	18024-7	60
1	1	1	1	5-18022-2	59
-	-	-	-	-	58
-	-	-	-	-	57
1	1	1	1	1338685-1	56
-	-	-	-	-	55
4	4	4	4	18024-8	54
2	2	2	2	1-18023-2	53
1	1	1	1	18030-1	52
1	1	1	1	811242-5	51
1	1	1	1	690753-2	50
1	1	1	1	18024-3	49
1	1	1	1	1338675-1	48
1	1	1	1	1338676-1	47
1	1	1	1	1320999-4	46
1	1	1	1	690191-1	45
1	1	1	1	1333257-1	44
-	-	-	-	-	43
-	-	-	-	-	42
1	1	1	1	992285-2	41
-	-	-	-	-	40
1	1	1	1	690125-1	39
1	1	1	1	1-469367-0	38
1	1	1	1	879103-2	37
-	-	-	-	-	36
-	-	-	-	-	35
1	1	1	1	1320934-4	34
2	2	2	2	1-18024-0	33
1	1	1	1	18027-2	32
1	1	1	1	1-18023-2	31
1	1	1	1	1320908-1	30
1	1	1	1	1633073-1	29
1	1	1	1	455888-8	28
2	2	2	2	1-22284-0	27
1	1	1	1	356835-1	26
1	1	1	1	240792-1	25
1	1	1	1	1320928-4	24
1	1	1	1	980371-4	23
1	1	1	1	690472-2	22
1	1	1	1	1-18023-1	21
4	4	4	4	18025-2	20
-	-	-	-	690472-1	19
-	-	-	-	-	18
1	1	1	1	1338684-1	17
-	-	-	-	-	16
-	-	-	-	-	15
-	-	-	-	-	14
-	-	-	-	-	13
1	1	1	1	3-22280-3	12
1	1	1	1	356885-4	11
1	1	1	1	1320921-1	10
1	1	1	1	454276-1	9
1	2	2	2	1633137-4	8
-	-	-	-	-	7
-	-	-	-	-	6
1	1	1	1	2-455889-4	5
1	1	1	1	238011-2	4
1	2	2	2	2-456135-9	3
1	1	1	1	1-455888-2	2
1	2	2	2	456411-4	1

DIMENSIONS	TOLERANCES UNLESS OTHERWISE SPECIFIED:	APPROVALS	DATE
mm (IN)	0 PLC ±.01 1 PLC ±.02 2 PLC ±.03 3 PLC ±.04 4 PLC ±.05	APPROVED: [Signature] DATE: 30APR2007	30APR2007
MATERIAL: [Blank]		DESIGNED BY: [Blank]	DATE: [Blank]
FINISH: [Blank]		CHECKED BY: [Blank]	DATE: [Blank]
WEIGHT: [Blank]		APPROVED BY: [Blank]	DATE: [Blank]
CUSTOMER DRAWING		SCALE: 3:5	SHEET 1 OF 1

Mouser Electronics

Authorized Distributor

Click to View Pricing, Inventory, Delivery & Lifecycle Information:

[TE Connectivity:](#)

[1528792-1](#)