

PART NUMBER	REV	FIRST USED	TERMINATOR	FEED TYPE	DESCRIPTION
1528466-1	A	-	LEADMAKER	MECH POST FEED	CUTS CARRIER
1528466-2	A	-	BENCH	MECH PRE FEED	CUTS CARRIER
1528466-6	A	-	LEADMAKER	MECH POST FEED	CONTINUOUS CARRIER
7-1528466-1	A	-	LEADMAKER	MECH POST FEED	-1 AND SPARE PARTS
7-1528466-2	A	-	BENCH	MECH PRE FEED	-2 AND SPARE PARTS
7-1528466-6	A	-	LEADMAKER	MECH POST FEED	-6 AND SPARE PARTS
7-1528466-7	A	-	-	-	SPARE PARTS KIT

CRIMP DATA GROTE & HARTMANN TERMINAL / TYCO CRIMP SPECS

TERMINAL NAME: DFK 2 RECEPTACLE

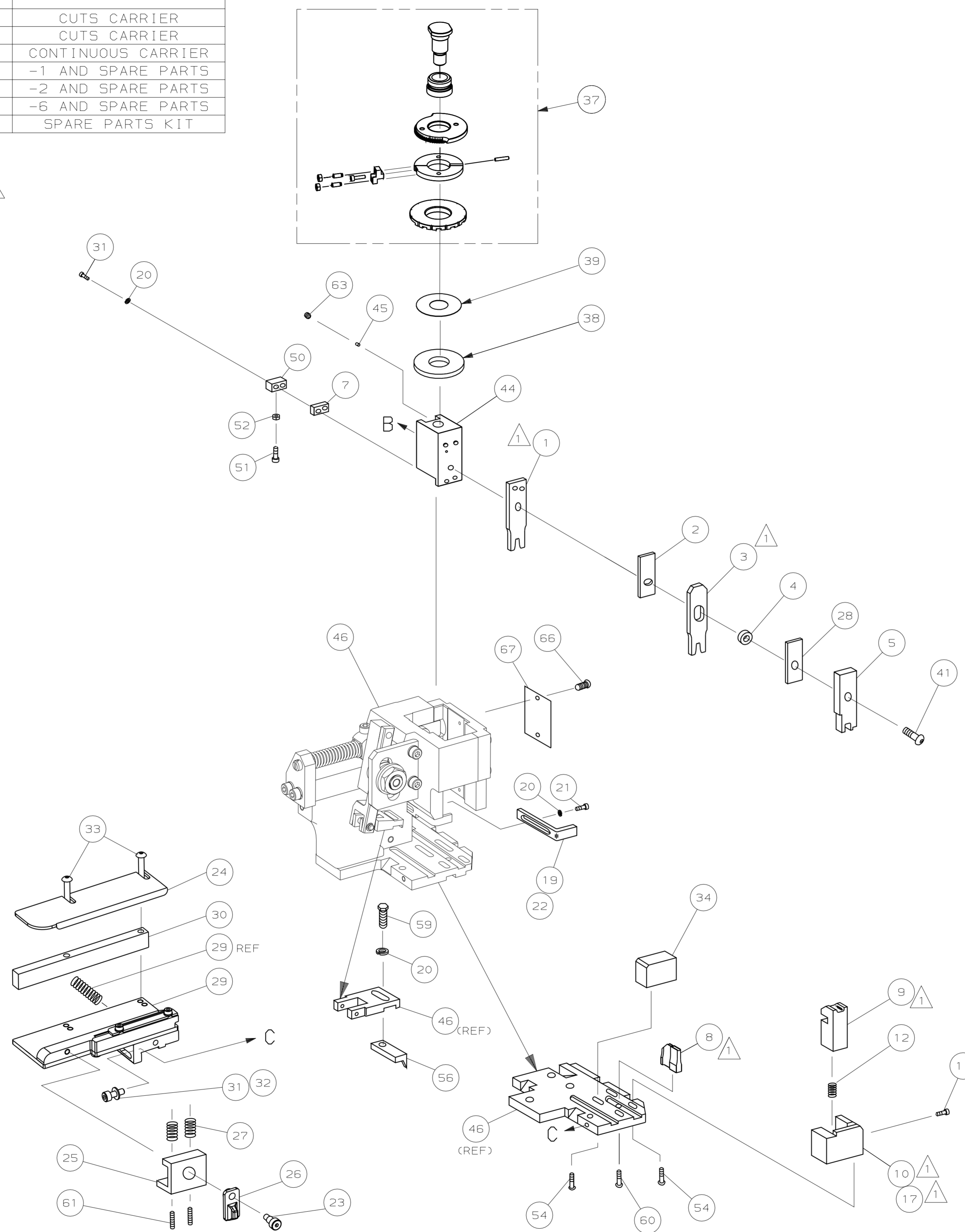
CRIMP	SIZE	TYPE	RANGE
WIRE	2.03 [.080 IN]	F	0.50-1.00mm ²
INSUL	3.56 [.140 IN]	0V	2.00-3.30 [.079-.130 IN]
WIRE STRIP LENGTH	APPL INSTRUCTION		
4.85-5.65 [.191-.222 IN]	408-8322 & 408-8490		

TERMINAL	NONE	-	FEED
APPL SPEC	-	-	18.50 [.728 IN]

TERMINALS APPLIED

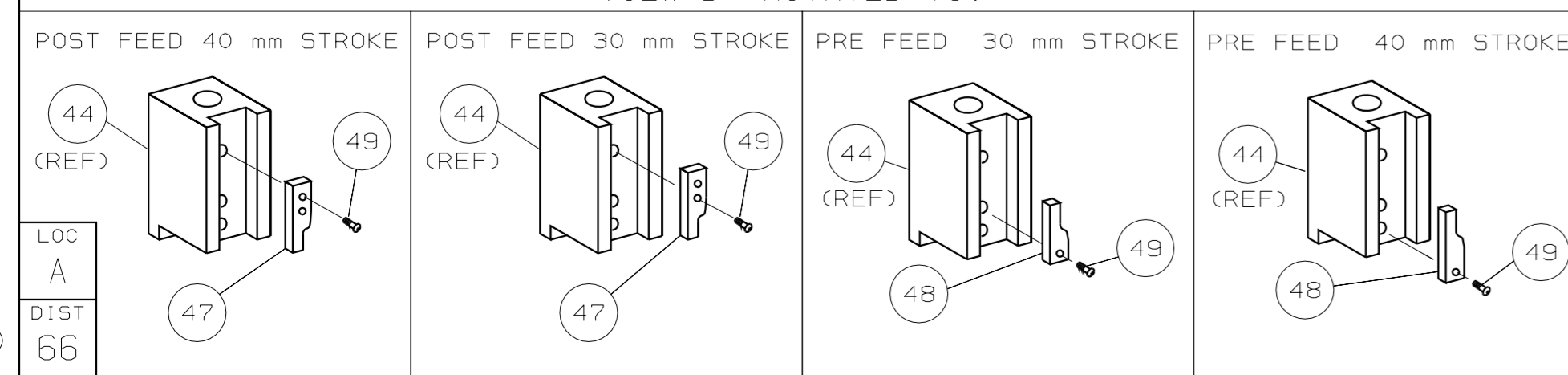
AMP TERM PN	MFR TERM PN	-	-	-
1572642-1	26477.213.179	-	-	-
1572642-2	26477.331.141	-	-	-
1572642-3	26477.331.179	-	-	-
-	-	-	-	-
-	-	-	-	-
-	-	-	-	-
-	-	-	-	-
-	-	-	-	-
-	-	-	-	-
-	-	-	-	-

WIRE SIZE	CRIMP HEIGHT	REF SETTING
1.00mm ²	1.45 ± 0.05 [.057 ± .002 IN]	B9
0.50mm ²	1.35 ± 0.05 [.053 ± .002 IN]	C6



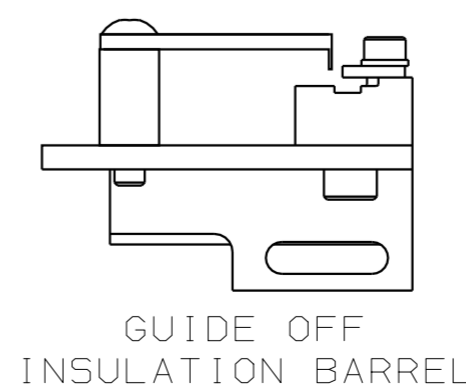
- RECOMMENDED SPARE PARTS.
- GREASE RAM, CAM, CAM FOLLOWER AND FEED ROD LIGHTLY.
- LUBRICATE DAILY PER THE APPLICATOR INSTRUCTION SHEET SUPPLIED WITH THE APPLICATOR.
- ALL CRIMP DATA CALCULATED BY TYCO ELECTRONICS UK LTD.

VIEW B ROTATED 180°



* WARNING:

ON INSTALLATION, SET WIRE DISC TO LARGEST WIRE SIZE SETTING. USE OF SETTINGS BELOW MIN REQUIRED CRIMP HEIGHT SETTING WILL CAUSE DAMAGE TO CRIMP TOOLING.



QTY	REV	REV	REV	REV	REV	REV	REV	REV	REV	PART NO	DESCRIPTION	ITEM NO
-	1	1	1	1	1	1	1	1	1	1528466	PRINT, APPLICATOR LOG SHEET	73
-	1	1	1	1	1	1	1	1	1	1338705-3	DOCUMENTATION PACKAGE	71
-	1	1	1	1	1	1	1	1	1			70
-	1	1	1	1	1	1	1	1	1			69
-	1	1	1	1	1	1	1	1	1	461264-5	PLATE, IDENTIFICATION	67
-	2	2	2	2	2	2	2	2	2	21017-2	SCR, DRIVE (#2x.19) ID PLATE	66
-	1	1	1	1	1	1	1	1	1			65
-	1	1	1	1	1	1	1	1	1	3-18031-0	SCR, SKT SET (M6X6) RAM	63
-	1	1	1	1	1	1	1	1	1			62
-	2	2	2	2	2	2	2	2	2	2-18032-5	SCR, SKT SET (M5X20) DRAG	61
-	1	1	1	1	1	1	1	1	1	18024-7	SCR, BHC (M4X10) ANVIL	60
-	1	1	1	1	1	1	1	1	1	5-18022-2	SCR, HEX (M4X8) FEED FINGER	59
-	1	1	1	1	1	1	1	1	1			58
-	1	1	1	1	1	1	1	1	1	1338685-1	PAWL, FEED	56
-	4	4	4	4	4	4	4	4	4	18024-8	SCR, BHC (M4X12) SHEAR HOLDER	55
-	1	1	1	1	1	1	1	1	1			54
-	1	1	1	1	1	1	1	1	1	18030-1	NUT, HEX (M3) HOLD DOWN	52
-	1	1	1	1	1	1	1	1	1	811242-5	BUMPER, HOLDDOWN	51
-	1	1	1	1	1	1	1	1	1	690753-2	SPACER, TONKER	50
-	1	1	1	1	1	1	1	1	1	18024-3	SCR, BHC (M3X10) CAM	49
-	1	1	1	1	1	1	1	1	1	1338675-1	CAM, PRE FEED 30 & 40 mm ST	48
-	1	1	1	1	1	1	1	1	1	1338676-1	CAM, POST FEED 30 & 40 mm ST	47
-	1	1	1	1	1	1	1	1	1	1320999-3	APPLICATOR BASIC SUBASSY	46
-	1	1	1	1	1	1	1	1	1	690191-1	PLUG, NYLON	45
-	1	1	1	1	1	1	1	1	1	1338660-1	RAM	44
-	1	1	1	1	1	1	1	1	1			43
-	1	1	1	1	1	1	1	1	1			42
-	1	1	1	1	1	1	1	1	1	2-18024-6	SCR, BHC (M8X25) RAM	41
-	1	1	1	1	1	1	1	1	1			40
-	1	1	1	1	1	1	1	1	1	690125-1	SHIM SUBASSY	39
-	1	1	1	1	1	1	1	1	1	1-469367-0	SPACER, FINE ADJUST	38
-	1	1	1	1	1	1	1	1	1	879103-2	FINE ADJUST HEAD SUBASSY	37
-	1	1	1	1	1	1	1	1	1			36
-	1	1	1	1	1	1	1	1	1			35
-	1	1	1	1	1	1	1	1	1	1320934-6	SUPPORT, TERMINAL	34
-	2	2	2	2	2	2	2	2	2	1-18024-0	SCR, BHC (M4X20) STRIP GUIDE	33
-	1	1	1	1	1	1	1	1	1	18027-2	WASHER, FLAT (M4)	32
-	3	3	3	3	3	3	3	3	3	1-18023-2	SCR, SKT CAP (M4X12) MOUNT BLOCK	31
-	1	1	1	1	1	1	1	1	1	1320908-2	SPACER, STRIP GUIDE	30
-	1	1	1	1	1	1	1	1	1	1633073-2	STRIP GUIDE PLATE ASSY	29
-	1	1	1	1	1	1	1	1	1	455888-8	SPACER, FRONT SHEAR DEP	28
-	2	2	2	2	2	2	2	2	2	1-22284-0	SPRING, DRAG	27
-	1	1	1	1	1	1	1	1	1	356835-1	LEVER, DRAG RELEASE	26
-	1	1	1	1	1	1	1	1	1	240792-1	DRAG, TERMINAL	25
-	1	1	1	1	1	1	1	1	1	1320928-1	PLATE, STRIP GUIDE	24
-	1	1	1	1	1	1	1	1	1	980371-4	SCR, SHC SHLD	23
-	1	1	1	1	1	1	1	1	1	690472-2	STRIPPER	22
-	1	1	1	1	1	1	1	1	1	1-18023-1	SCR, SHC (M4X10) STRIPPER	21
-	4	4	4	4	4	4	4	4	4	18025-2	WASHER, LOCK (M4) STRIPPER	20
-	1	1	1	1	1	1	1	1	1	690472-1	STRIPPER	19
-	1	1	1	1	1	1	1	1	1			18
-	1	1	1	1	1	1	1	1	1	1338684-1	HOLDER, SHEAR, FRONT (NO-CUT)	17
-	1	1	1	1	1	1	1	1	1			16
-	1	1	1	1	1	1	1	1	1			15
-	1	1	1	1	1	1	1	1	1			14
-	1	1	1	1	1	1	1	1	1			13
-	1	1	1	1	1	1	1	1	1	5-22280-0	SPRING, SHEAR	12
-	1	1	1	1	1	1	1	1	1	356885-4	STOP, SHEAR	11
-	1	1	1	1	1	1	1	1	1	1320921-1	HOLDER, SHEAR, FRONT (CUT)	10
-	1	1	1	1	1	1	1	1	1	462006-2	SHEAR, FLOAT (FRONT)	9
-	1	2	2	2	2	2	2	2	2	9-1333204-3	ANVIL	8
-	1	1	1	1	1	1	1	1	1	1-240641-7	SPACER, DEPRESSOR (REAR)	7
-	1	1	1	1	1	1	1	1	1			6
-	1	1	1	1	1	1	1	1	1	2-455889-0	DEPRESSOR, SHEAR (FRONT)	5
-	1	1	1	1	1	1	1	1	1	1-238011-0	SPACER, BLOCK CRIMPER	4
-	1	2	2	2	2	2	2	2	2	1-854830-2	CRIMPER, INSULATION	3
-	1	1	1	1	1	1	1	1	1	455888-5	SPACER, CRIMPER	2
-	1	2	2	2	2	2	2	2	2	2-456405-7	CRIMPER, WIRE	1

PARTS LIST			HT TR	FIN
DIMENSIONS: mm [INCHES]				
DO NOT SCALE PRINT.				
TOLERANCES UNLESS OTHERWISE SPECIFIED:				
1	PLC DEC ±			
2	PLC DEC ±			
3	PLC DEC ±			
ANGLES ±				
SURF TEXTURE: ✓				
REMOVE BURRS, BREAK SHARP EDGES R0.38 MAX				
DR M. CLIFFORD			APP F. BACKHURST	
CHK -			REL 16-03-05	
M. CLIFFORD			AMP Tyco Electronics Harrisburg, PA 17105-3808	
NAME			FINE ADJ SIDE FD HD-I APPL	
SCALE			D	
DWG NO			1528466	
SHEET			1 OF 1	
REV			A1	
RESTRICTED TO				

Mouser Electronics

Authorized Distributor

Click to View Pricing, Inventory, Delivery & Lifecycle Information:

[TE Connectivity:](#)

[1528466-6](#)