

PART NUMBER	REV	FIRST USED	TERMINATOR	FEED TYPE	DESCRIPTION
1528345-1	B	-	LEADMAKER	MECH POST FEED	CUTS CARRIER
1528345-2	B	-	BENCH	MECH PRE FEED	CUTS CARRIER
1528345-6	B	-	LEADMAKER	MECH POST FEED	CONTINUOUS CARRIER
7-1528345-1	B	-	LEADMAKER	MECH POST FEED	-1 AND SPARE PARTS
7-1528345-2	B	-	BENCH	MECH PRE FEED	-2 AND SPARE PARTS
7-1528345-6	B	-	LEADMAKER	MECH POST FEED	-6 AND SPARE PARTS
7-1528345-7	A	-	-	-	SPARE PARTS KIT

CRIMP DATA AMP TERMINAL AMP CRIMP SPECS

TERMINAL NAME: POSITIVE LOCK RECEPTACLE

CRIMP	SIZE	TYPE	RANGE
WIRE	1.78 [0.070 IN]	F	0.20mm ² - 0.50mm ²
INSUL	2.29 [0.090 IN]	OV/5	1.00-1.60 [0.039-.063 IN]
WIRE STRIP LENGTH		APPL INSTRUCTION	
4.20-4.80 [1.165-.189 IN]		408-8322 & 408-8490	

TERMINAL	FEED
APPL SPEC 114-18365	26.42 [1.040 IN]

TERMINALS APPLIED

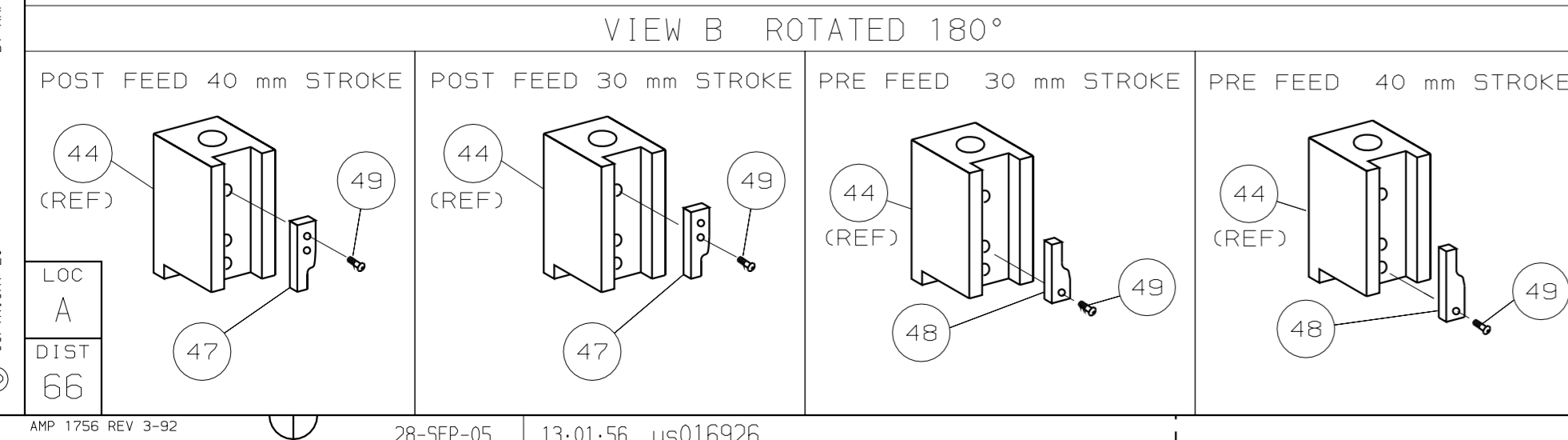
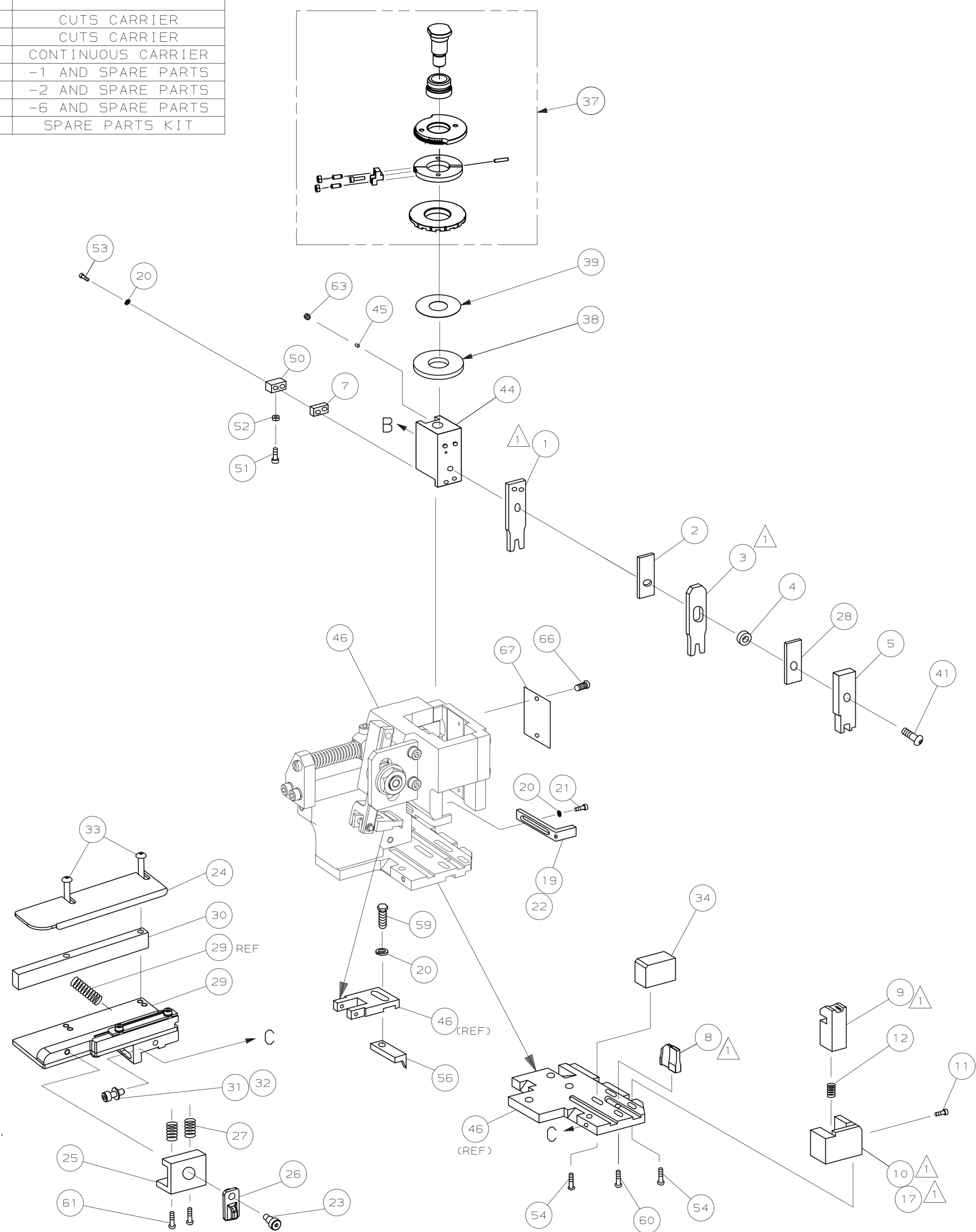
TERMINAL NUMBER	TYPE	WIRE SIZE	CRIMP HEIGHT	REF SETTING
928909	-	-	-	-
-	-	-	-	-
-	-	-	-	-
-	-	-	-	-
-	-	-	-	-
-	-	-	-	-
-	-	-	-	-
-	-	-	-	-
-	-	-	-	-
-	-	-	-	-
-	-	-	-	-
-	-	-	-	-
-	-	-	-	-
-	-	-	-	-
-	-	-	-	-
-	-	-	-	-
-	-	-	-	-
-	-	-	-	-
-	-	-	-	-
-	-	-	-	-
-	-	-	-	-
-	-	-	-	-

WIRE SIZE	CRIMP HEIGHT	REF SETTING
0.50mm ²	1.26 ±0.05 [0.050 ±0.002 IN]	B4
0.35mm ²	1.19 ±0.05 [0.047 ±0.002 IN]	B9
0.25mm ²	1.15 ±0.05 [0.045 ±0.002 IN]	C2
0.20mm ²	1.13 ±0.05 [0.044 ±0.002 IN]	C5

LAYOUT L1528345

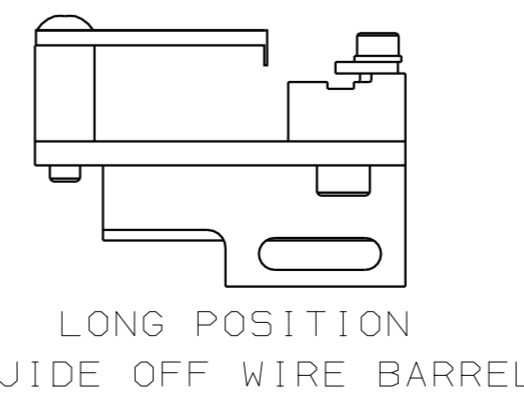
SET UP GAGE 458637-3

- RECOMMENDED SPARE PARTS.
- GREASE RAM, CAM, CAM FOLLOWER AND FEED ROD LIGHTLY.
- LUBRICATE DAILY PER THE APPLICATOR INSTRUCTION SHEET SUPPLIED WITH THE APPLICATOR.
- FEED PAWL RUNS ALONG OUTSIDE EDGE OF FRONT STRIP GUIDE.
- INSULATION TYPE REQUESTED BY SPECIFIC CUSTOMER AND MAY NOT CONFORM TO APPLICATION SPECIFICATION REQUIREMENTS.



*** WARNING:**

ON INSTALLATION, SET WIRE DISC TO LARGEST WIRE SIZE SETTING. USE OF SETTINGS BELOW MIN REQUIRED CRIMP HEIGHT SETTING WILL CAUSE DAMAGE TO CRIMP TOOLING.



REVISION RECORD

REV	DATE	DESCRIPTION
B	ECR 05-012041	
A	SEE ECN 015A-0218-04	

QTY	REV	DESCRIPTION	PART NO	ITEM NO				
1	1	1	1	1	1	1528345	PRINT, APPLICATOR LOG SHEET	73
1	1	1	1	1	1	1338705-3	DOCUMENTATION PACKAGE	71
								70
								69
								68
1	1	1	1	1	1	461264-5	PLATE, IDENTIFICATION	67
2	2	2	2	2	2	21017-2	SCR,DRIVE (#2x.19) ID PLATE	66
								65
								64
1	1	1	1	1	1	3-18031-0	SCR,SKT SET (M6X6) RAM	63
								62
2	2	2	2	2	2	1-18024-5	SCR,BHC (M5X25) DRAG	61
1	1	1	1	1	1	18024-7	SCR,BHC (M4X10) ANVIL	60
1	1	1	1	1	1	5-18022-2	SCR,HEX (M4X8) FEED FINGER	59
								58
								57
1	1	1	1	1	1	1333240-1	PAWL, FEED	56
								55
4	4	4	4	4	4	18024-8	SCR,BHC (M4X12) SHEAR HOLDER	54
2	2	2	2	2	2	1-18023-3	SCR,SHC (M4X16) TERM HLD DWN	53
1	1	1	1	1	1	18030-1	NUT, HEX (M3) HOLD DOWN	52
1	1	1	1	1	1	811242-5	BUMPER, HOLDDOWN	51
1	1	1	1	1	1	690753-2	SPACER, TONKER	50
1	1	1	1	1	1	18024-3	SCR,BHC (M3X10) CAM	49
1	1	1	1	1	1	1338675-1	CAM, PRE FEED 30 & 40 mm ST	48
1	1	1	1	1	1	1338676-1	CAM, POST FEED 30 & 40 mm ST	47
1	1	1	1	1	1	1320999-3	APPLICATOR BASIC SUBASSY	46
1	1	1	1	1	1	690191-1	PLUG, NYLON	45
1	1	1	1	1	1	1338660-1	RAM	44
								43
								42
1	1	1	1	1	1	2-18024-6	SCR,BHC (M8X25) RAM	41
								40
1	1	1	1	1	1	690125-1	SHIM SUBASSY	39
1	1	1	1	1	1	469367-8	SPACER, FINE ADJUST	38
1	1	1	1	1	1	879103-3	FINE ADJUST HEAD SUBASSY	37
								36
								35
1	1	1	1	1	1	1320934-6	SUPPORT, TERMINAL	34
2	2	2	2	2	2	1-18024-0	SCR,BHC (M4X20) STRIP GUIDE	33
1	1	1	1	1	1	18027-2	WASHER, FLAT (M4)	32
1	1	1	1	1	1	1-18023-2	SCR,SKT CAP (M4X12) MOUNT BLOCK	31
1	1	1	1	1	1	1320908-3	SPACER, STRIP GUIDE	30
1	1	1	1	1	1	1633073-7	STRIP GUIDE PLATE ASSY	29
1	1	1	1	1	1	455888-1	SPACER, FRONT SHEAR DEP	28
2	2	2	2	2	2	1-22284-0	SPRING, DRAG	27
1	1	1	1	1	1	356835-1	LEVER, DRAG RELEASE	26
1	1	1	1	1	1	240792-1	DRAG, TERMINAL	25
1	1	1	1	1	1	1320928-2	PLATE, STRIP GUIDE	24
1	1	1	1	1	1	980371-4	SCR,SHC SHLD	23
1	1	1	1	1	1	690472-2	STRIPPER	22
1	1	1	1	1	1	1-18023-1	SCR,SHC (M4X10) STRIPPER	21
4	4	4	4	4	4	18025-2	WASHER, LOCK (M4) STRIPPER	20
1	1	1	1	1	1	690472-1	STRIPPER	19
								18
1	1	1	1	1	1	1338684-1	HOLDER, SHEAR, FRONT (NO-CUT)	17
								16
								15
								14
								13
1	1	1	1	1	1	5-22280-0	SPRING, SHEAR	12
1	1	1	1	1	1	356885-4	STOP, SHEAR	11
1	1	1	1	1	1	1320921-1	HOLDER, SHEAR, FRONT (CUT)	10
1	1	1	1	1	1	462006-1	SHEAR, FLOAT (FRONT)	9
1	2	2	2	2	2	5-1333203-5	ANVIL	8
1	1	1	1	1	1	2-240641-4	SPACER, DEPRESSOR (REAR)	7
								6
1	1	1	1	1	1	2-455889-0	DEPRESSOR, SHEAR (FRONT)	5
1	1	1	1	1	1	238011-4	SPACER, BLOCK CRIMPER	4
1	2	2	2	2	2	1-854830-4	CRIMPER, INSULATION	3
1	1	1	1	1	1	455888-5	SPACER, CRIMPER	2
1	2	2	2	2	2	5-657555-4	CRIMPER, WIRE	1

QTY REQD PER ASSY

REVISION OF EACH ASSY NO (WHEN BLANK, USE DWG REVISION)

DIMENSIONS: mm [INCHES] MATL HT TR FIN

DO NOT SCALE PRINT.

TOLERANCES UNLESS OTHERWISE SPECIFIED:

- 1 PLC DEC ±
- 2 PLC DEC ±
- 3 PLC DEC ±

ANGLES ±

SURF TEXTURE: ✓

REMOVE BURRS, BREAK SHARP EDGES RO.38 MAX

DR L.L.OFFHOUSE 27JAN04 APP F.BACKHURST 27JAN04

CHK REL 24-03-04 M.CLIFFORD

AMP Tyco Electronics Harrisburg, PA 17105-3608

NAME FINE ADJ SIDE FD HD-I APPL MACHINE REF HD-I APPL

SCALE DWG NO 1528345 SHEET 1 OF 1 REV B

CAGE CODE 00779 CUSTOMER AND ASSEMBLY DRAWING

THIS DRAWING IS A CONTROLLED DOCUMENT.

LAYOUT L1528345 SET UP GAGE 458637-3

THIS DRAWING IS UNRELEASABLE. RELEASE FOR PUBLICATION BY AMP INCORPORATED. ALL RIGHTS RESERVED. AMP 1756 REV 3-92

1528345

D

C

B

A

Mouser Electronics

Authorized Distributor

Click to View Pricing, Inventory, Delivery & Lifecycle Information:

[TE Connectivity:](#)

[1528345-6](#)