

4

3

2

1


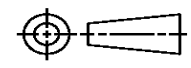
THIS DRAWING IS UNPUBLISHED. RELEASED FOR PUBLICATION
© COPYRIGHT ALL RIGHTS RESERVED.

LOC	DIST	REVISIONS			
P	LTR	DESCRIPTION	DATE	DWN	APVD
	A1	ECR-14-002236	17FEB2014	GK	HMR

REPLACED BY OCEAN STYLE APPLICATOR PART NUMBER 2151920-1

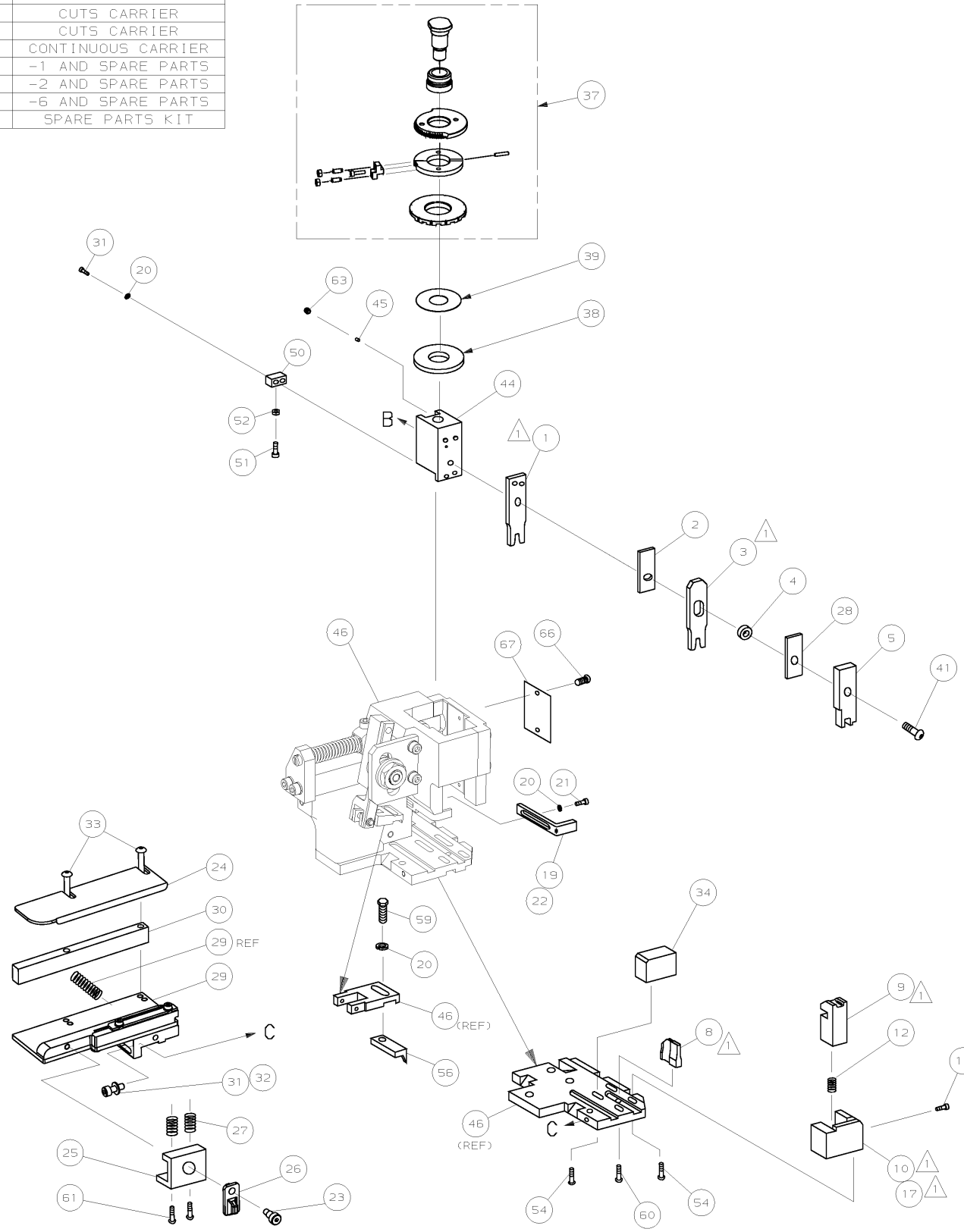
FOR REPLACEMENT PARTS FOR APPLICATOR 1528340 REFER TO ADDITIONAL PAGE(S). SPARE PARTS KIT (IF LISTED) WILL REMAIN AVAILABLE.

THE REPLACEMENT OCEAN STYLE APPLICATOR HAS THE SAME TERMINATOR/PRESS INTERFACE AS APPLICATOR 1528340

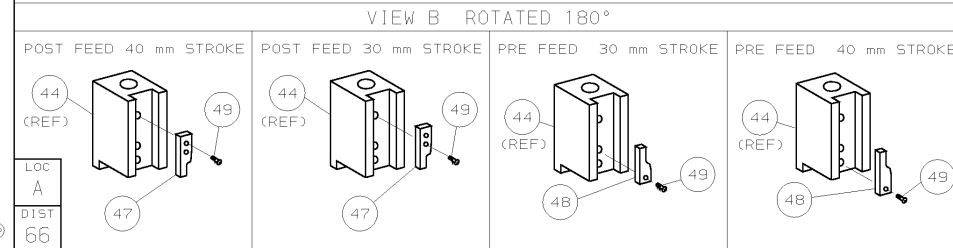
THIS DRAWING IS A CONTROLLED DOCUMENT.		DWN	GOPALAKRISHNA HV			TE Connectivity	
DIMENSIONS:		CHK	RAGHAVENDRA			NAME	
		TOLERANCES UNLESS OTHERWISE SPECIFIED:		FINE ADJ SIDE FD HD-I APPL			
		0 PLC ±	1 PLC ±	PRODUCT SPEC			
MATERIAL		2 PLC ±	3 PLC ±	APPLICATION SPEC			
FINISH		4 PLC ±	ANGLES ±	SIZE	CAGE CODE	DRAWING NO	RESTRICTED TO
				A3		©- 1528340	
				CUSTOMER DRAWING		SCALE	SHEET 1 OF 2 REV A1

PART NUMBER	REV	FIRST USED	TERMINATOR	FEED TYPE	DESCRIPTION
1528340-1	A	-	LEADMAKER	MECH POST FEED	CUTS CARRIER
1528340-2	A	-	BENCH	MECH PRE FEED	CUTS CARRIER
1528340-6	A	-	LEADMAKER	MECH POST FEED	CONTINUOUS CARRIER
7-1528340-1	A	-	LEADMAKER	MECH POST FEED	-1 AND SPARE PARTS
7-1528340-2	A	-	BENCH	MECH PRE FEED	-2 AND SPARE PARTS
7-1528340-6	A	-	LEADMAKER	MECH POST FEED	-6 AND SPARE PARTS
7-1528340-7	A	-	-	-	SPARE PARTS KIT

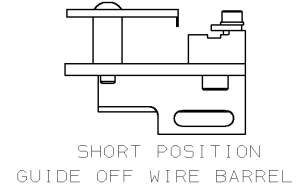
CRIMP DATA MOLEX TERMINAL AMP CRIMP SPECS			
TERMINAL NAME: MOLEX NEW MINI FIT CONN. PIN/RECEPT.			
CRIMP	SIZE	TYPE	RANGE
WIRE	1.27 [.050 IN]	F	28 - 22 AWG
INSUL	1.78 [.070 IN]	F	0.90-1.80 [.035-.071 IN]
WIRE STRIP LENGTH		APPL INSTRUCTION	
3.00-3.50 [.118-.138 IN]		408-8322 & 408-8490	
TERMINAL MOLEX 69037-1132 /		FEED	
APPL SPEC AS.00.07.13 ISS B APPL. SHEET		11.00 [.433 IN]	
TERMINALS APPLIED			
AMP TERM PN	MFR TERM PN		
1572221-1	39-00-0046	RECEPT	-
1572221-2	39-00-0065	RECEPT	-
1572221-3	39-00-0110	RECEPT	-
1572221-4	39-00-0116	RECEPT	-
1572222-1	39-00-0048	PIN	-
1572222-2	39-00-0067	PIN	-
WIRE SIZE	CRIMP HEIGHT	REF SETTING	
mm ² AWG			
22 AWG	0.79 ±0.03 [.031 ±.001 IN]	B2	
24 AWG	0.74 ±0.03 [.029 ±.001 IN]	B6	
26 AWG	0.69 ±0.03 [.027 ±.001 IN]	B9	
28 AWG	0.66 ±0.03 [.026 ±.001 IN]	C1	



- 1. RECOMMENDED SPARE PARTS.
- 2. GREASE RAM, CAM, CAM FOLLOWER AND FEED ROD LIGHTLY.
- 3. LUBRICATE DAILY PER THE APPLICATOR INSTRUCTION SHEET SUPPLIED WITH THE APPLICATOR.
- 4. USE TYCO APPL. SPEC. 114-3118 FOR ALL OTHER CRIMP DATA NOT SHOWN ON MOLEX APPL. SHEET INFORMATION.



*** WARNING:**
ON INSTALLATION, SET WIRE DISC TO LARGEST WIRE SIZE SETTING. USE OF SETTINGS BELOW MIN REQUIRED CRIMP HEIGHT SETTING WILL CAUSE DAMAGE TO CRIMP TOOLING.



QTY	RECD	PER	ASSY	PART NO	DESCRIPTION	ITEM NO			
-	1	1	1	1	1	1	1528340	PRINT, APPLICATOR LOG SHEET	73
-	1	1	1	1	1	1	1338705-3	DOCUMENTATION PACKAGE	72
-	1	1	1	1	1	1			71
-	1	1	1	1	1	1			70
-	1	1	1	1	1	1			69
-	1	1	1	1	1	1			68
-	1	1	1	1	1	1	461264-5	PLATE, IDENTIFICATION	67
-	2	2	2	2	2	2	21017-2	SCR,DRIVE(#2x.19) ID PLATE	66
-	1	1	1	1	1	1			65
-	1	1	1	1	1	1	3-18031-0	SCR,SKT SET (M6X6) RAM	64
-	1	1	1	1	1	1			63
-	2	2	2	2	2	2	1-18024-5	SCR,BHC (M5X25) DRAG	62
-	1	1	1	1	1	1	18024-7	SCR,BHC (M4X10) ANVIL	61
-	1	1	1	1	1	1	5-18022-2	SCR,HEX (M4X8) FEED FINGER	60
-	1	1	1	1	1	1			59
-	1	1	1	1	1	1			58
-	1	1	1	1	1	1			57
-	1	1	1	1	1	1	1338685-1	PAWL, FEED	56
-	1	1	1	1	1	1			55
-	4	4	4	4	4	4	18024-8	SCR,BHC (M4X12) SHEAR HOLDER	54
-	1	1	1	1	1	1			53
-	1	1	1	1	1	1	18030-1	NUT,HEX (M3) HOLD DOWN	52
-	1	1	1	1	1	1	811242-5	BUMPER, HOLDDOWN	51
-	1	1	1	1	1	1	690753-2	SPACER, TONKER	50
-	1	1	1	1	1	1	18024-3	SCR,BHC (M3X10) CAM	49
-	1	1	1	1	1	1	1338675-1	CAM, PRE FEED 30 & 40 mm ST	48
-	1	1	1	1	1	1	1338676-1	CAM, POST FEED 30 & 40 mm ST	47
-	1	1	1	1	1	1	1320999-3	APPLICATOR BASIC SUBASSY	46
-	1	1	1	1	1	1	690191-1	PLUG, NYLON	45
-	1	1	1	1	1	1	1338660-1	RAM	44
-	1	1	1	1	1	1			43
-	1	1	1	1	1	1			42
-	1	1	1	1	1	1	2-18024-6	SCR,BHC (M8X25) RAM	41
-	1	1	1	1	1	1			40
-	1	1	1	1	1	1	690125-1	SHIM SUBASSY	39
-	1	1	1	1	1	1	469367-7	SPACER, FINE ADJUST	38
-	1	1	1	1	1	1	879103-3	FINE ADJUST HEAD SUBASSY	37
-	1	1	1	1	1	1			36
-	1	1	1	1	1	1			35
-	1	1	1	1	1	1	1320934-5	SUPPORT, TERMINAL	34
-	2	2	2	2	2	2	1-18024-0	SCR,BHC (M4X20) STRIP GUIDE	33
-	1	1	1	1	1	1	18027-2	WASHER, FLAT (M4)	32
-	3	3	3	3	3	3	1-18023-2	SCR,SKT CAP (M4X12) MOUNT BLOCK	31
-	1	1	1	1	1	1	1320908-4	SPACER, STRIP GUIDE	30
-	1	1	1	1	1	1	1633073-1	STRIP GUIDE PLATE ASSY	29
-	1	1	1	1	1	1	1-455888-0	SPACER, FRONT SHEAR DEP	28
-	2	2	2	2	2	2	1-22284-0	SPRING, DRAG	27
-	1	1	1	1	1	1	356835-1	LEVER, DRAG RELEASE	26
-	1	1	1	1	1	1	240792-1	DRAG, TERMINAL	25
-	1	1	1	1	1	1	1320928-1	PLATE, STRIP GUIDE	24
-	1	1	1	1	1	1	980371-4	SCR,SHC SHLD	23
-	1	1	1	1	1	1	690472-2	STRIPPER	22
-	1	1	1	1	1	1	1-18023-1	SCR,SHC (M4X10) STRIPPER	21
-	4	4	4	4	4	4	18025-2	WASHER, LOCK (M4) STRIPPER	20
-	1	1	1	1	1	1	690472-1	STRIPPER	19
-	1	1	1	1	1	1			18
-	1	1	1	1	1	1	1338684-1	HOLDER, SHEAR, FRONT (NO-CUT)	17
-	1	1	1	1	1	1			16
-	1	1	1	1	1	1			15
-	1	1	1	1	1	1			14
-	1	1	1	1	1	1			13
-	1	1	1	1	1	1	5-22280-0	SPRING, SHEAR	12
-	1	1	1	1	1	1	356885-4	STOP, SHEAR	11
-	1	1	1	1	1	1	1320921-1	HOLDER, SHEAR, FRONT (CUT)	10
-	1	1	1	1	1	1	462006-1	SHEAR, FLOAT (FRONT)	9
1	2	2	2	1	1	1	3-1333225-3	ANVIL	8
-	1	1	1	1	1	1			7
-	1	1	1	1	1	1			6
-	1	1	1	1	1	1	2-455889-0	DEPRESSOR, SHEAR (FRONT)	5
-	1	1	1	1	1	1	238011-6	SPACER, BLOCK CRIMPER	4
1	2	2	2	1	1	1	3-683453-3	CRIMPER, INSULATION	3
-	1	1	1	1	1	1	455888-1	SPACER, CRIMPER	2
1	2	2	2	1	1	1	6-568176-8	CRIMPER, WIRE	1

QTY RECD PER ASSY		PARTS LIST	
DR	L.LOFTHOUSE	26JAN04	APP F.BACKHURST
CHK		REL	11-03-04 M.CLIFFORD
NAME		FINE ADJ SIDE FD HD-I APPL	
SCALE	D	DWG NO	1528340
SHEET 1 of 1		REV A	

THIS DRAWING IS A CONTROLLED DOCUMENT

LAYOUT L1426406 SET UP GAGE 458637-3

THIS DRAWING IS UNPUBLISHED. RELEASED FOR PUBLICATION BY AMP INCORPORATED. ALL RIGHTS RESERVED. AMP 1756 REV 3-92

Mouser Electronics

Authorized Distributor

Click to View Pricing, Inventory, Delivery & Lifecycle Information:

[TE Connectivity:](#)

[1528340-1](#)