

4

3

2

1

THIS DRAWING IS UNPUBLISHED.

RELEASED FOR PUBLICATION

© COPYRIGHT

ALL RIGHTS RESERVED.

LOC DIST

REVISIONS

P	LTR	DESCRIPTION	DATE	DWN	APVD

REPLACED BY OCEAN STYLE APPLICATOR PART NUMBER

FOR REPLACEMENT PARTS FOR APPLICATOR REFER TO ADDITIONAL PAGE(S). SPARE PARTS KIT (IF LISTED) WILL REMAIN AVAILABLE.

THE REPLACEMENT OCEAN STYLE APPLICATOR HAS THE SAME TERMINATOR/PRESS INTERFACE AS APPLICATOR

THIS DRAWING IS A CONTROLLED DOCUMENT.		DWN	 TE Connectivity		
DIMENSIONS:		CHK			
		APVD	NAME		
TOLERANCES UNLESS OTHERWISE SPECIFIED: 0 PLC ± 1 PLC ± 2 PLC ± 3 PLC ± 4 PLC ± ANGLES ±		PRODUCT SPEC	RESTRICTED TO		
MATERIAL		APPLICATION SPEC	SIZE	CAGE CODE	DRAWING NO
FINISH		WEIGHT	A3		C-
			SCALE	SHEET	OF
					REV

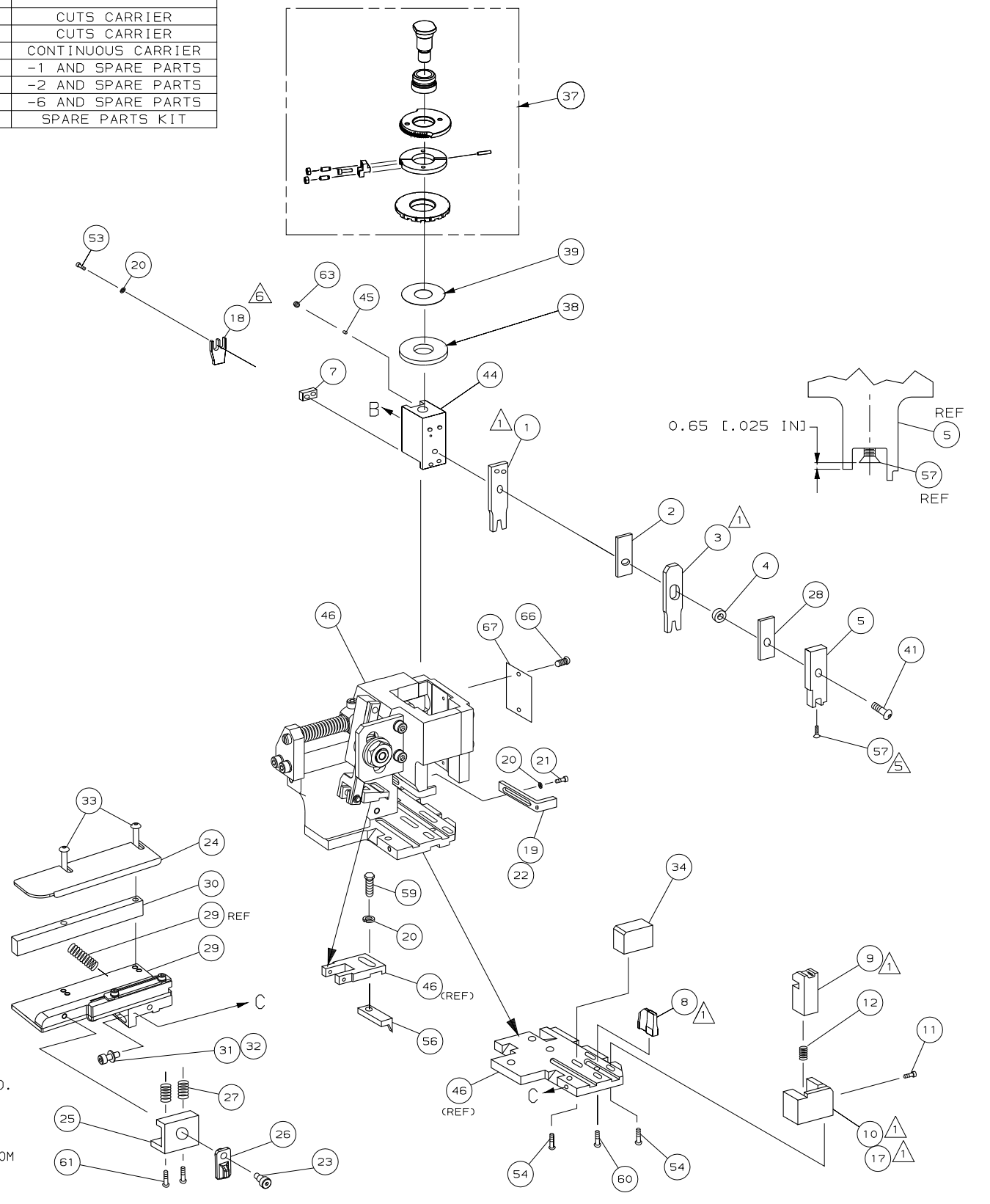
DRAWING MADE IN THIRD ANGLE PROJECTION

1528227 1528227

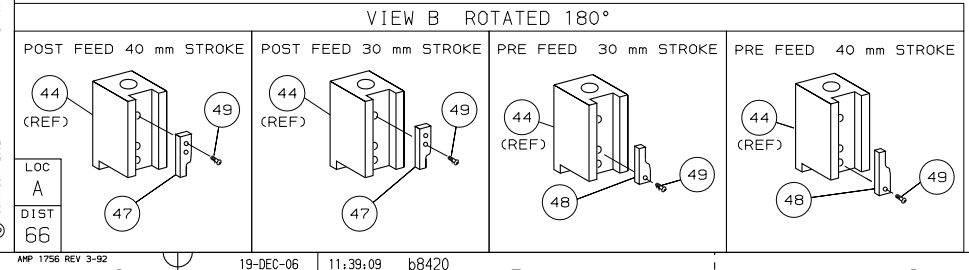
/nd/nboun/medout

PART NUMBER	REV	FIRST USED	TERMINATOR	FEED TYPE	DESCRIPTION
1528227-1	C	-	LEADMAKER	MECH POST FEED	CUTS CARRIER
1528227-2	C	-	BENCH	MECH PRE FEED	CUTS CARRIER
1528227-6	C	-	LEADMAKER	MECH POST FEED	CONTINUOUS CARRIER
7-1528227-1	C	-	LEADMAKER	MECH POST FEED	-1 AND SPARE PARTS
7-1528227-2	C	-	BENCH	MECH PRE FEED	-2 AND SPARE PARTS
7-1528227-6	C	-	LEADMAKER	MECH POST FEED	-6 AND SPARE PARTS
7-1528227-7	A	-	-	-	SPARE PARTS KIT

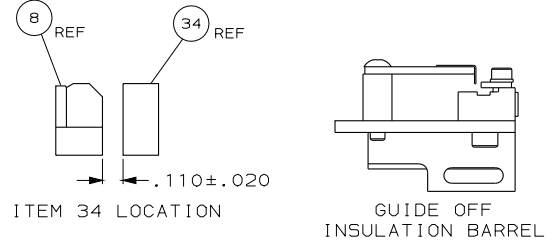
CRIMP DATA AMP TERMINAL AMP CRIMP SPECS			
TERMINAL NAME: SOCKET CONTACT 0.63X1.5MM			
CRIMP	SIZE	TYPE	RANGE
WIRE	2.03 [0.080 IN]	F	0.75-1.50mm ²
INSUL	3.43 [0.135 IN]	0	2.60 MAX [0.102 IN MAX]
WIRE STRIP LENGTH		APPL INSTRUCTION	
4.30-4.90 [0.169-.193 IN]		408-8322 & 408-8490	
TERMINAL	-	-	FEED
APPL SPEC	114-18286	-	7.00 [0.276 IN]
TERMINALS APPLIED			
TERMINAL	SEAL	-	-
1241605	967067-1	-	-
-	963142-1	-	-
-	-	-	-
-	-	-	-
-	-	-	-
-	-	-	-
-	-	-	-
-	-	-	-
WIRE SIZE	CRIMP HEIGHT	REF SETTING	
mm ² AWG	*	*	
1.50mm ²	1.44 ±0.05 [0.057 ±0.002 IN]	B8	
1.00mm ²	1.25 ±0.05 [0.049 ±0.002 IN]	D1	
0.75mm ²	1.15 ±0.05 [0.045 ±0.002 IN]	D8	



- 1. RECOMMENDED SPARE PARTS.
- 2. GREASE RAM, CAM, CAM FOLLOWER AND FEED ROD LIGHTLY.
- 3. LUBRICATE DAILY PER THE APPLICATOR INSTRUCTION SHEET SUPPLIED WITH THE APPLICATOR.
- 4. THIS APPLICATOR APPLIES TERMINAL WITH A SEAL. INSULATION Ø QUOTED IS OUTER Ø OF SEAL & THE INSULATION DIAMETER IS DEPENDENT UPON SEAL BEING APPLIED.
- 5. APPLY TORQ-SEAL IN ALLEN SOCKET TO FILL HOLE AFTER FLAT HD HAS BEEN ADJUSTED TO CORRECT HEIGHT AT QUALIFICATION. APPLY #1-23419-5 LOC-TITE TO THREADS.
- 6. HOLDER, TERMINAL (ITEM NO.18) POSITIONED 0.6 [0.023 IN] FROM UNDERSIDE OF RAM SURFACE (ITEM NO.44).



*** WARNING:**
ON INSTALLATION, SET WIRE DISC TO LARGEST WIRE SIZE SETTING. USE OF SETTINGS BELOW MIN REQUIRED CRIMP HEIGHT SETTING WILL CAUSE DAMAGE TO CRIMP TOOLING.



QTY	REQD	PER	ASSY	PART NO	DESCRIPTION	ITEM NO
-	1	1	1	1	1	1528227
-	1	1	1	1	1	1338705-3
-	1	1	1	1	1	461264-5
-	2	2	2	2	2	21017-2
-	1	1	1	1	1	3-18031-0
-	2	2	2	2	2	2-18032-5
-	1	1	1	1	1	18024-7
-	1	1	1	1	1	5-18022-2
-	1	1	1	1	1	985575-3
-	1	1	1	1	1	1338685-1
-	4	4	4	4	4	18024-8
-	2	2	2	2	2	1-18023-1
-	1	1	1	1	1	18024-3
-	1	1	1	1	1	1338675-1
-	1	1	1	1	1	1338676-1
-	1	1	1	1	1	1320999-3
-	1	1	1	1	1	690191-1
-	1	1	1	1	1	1338660-1
-	1	1	1	1	1	2-18024-6
-	1	1	1	1	1	690125-1
-	1	1	1	1	1	1-469367-0
-	1	1	1	1	1	879103-2
-	1	1	1	1	1	1320934-3
-	2	2	2	2	2	1-18024-0
-	1	1	1	1	1	18027-2
-	1	1	1	1	1	1-18023-2
-	1	1	1	1	1	1320908-8
-	1	1	1	1	1	1633073-1
-	1	1	1	1	1	1-455888-8
-	2	2	2	2	2	1-22284-0
-	1	1	1	1	1	356835-1
-	1	1	1	1	1	240792-1
-	1	1	1	1	1	1320928-1
-	1	1	1	1	1	980371-4
-	1	1	1	1	1	690472-2
-	1	1	1	1	1	1-18023-1
-	4	4	4	4	4	18025-2
-	1	1	1	1	1	690472-1
-	1	1	1	1	1	690518-2
-	1	1	1	1	1	1338684-2
-	1	1	1	1	1	3-22280-3
-	1	1	1	1	1	356885-5
-	1	1	1	1	1	1-1320921-0
-	1	1	1	1	1	318707-1
1	2	2	2	1	1	6-1333204-7
-	1	1	1	1	1	240641-2
-	1	1	1	1	1	1338680-1
-	1	1	1	1	1	238011-2
1	2	2	2	1	1	1-562244-2
-	1	1	1	1	1	455888-6
1	2	2	2	1	1	2-562108-8

QTY REQD PER ASSY

REVISION OF EACH ASSY NO (WHEN BLANK, USE DWG REVISION)

PARTS LIST

DO NOT SCALE PRINT. TOLERANCES UNLESS OTHERWISE SPECIFIED.

DR M. CLIFFORD 04AUG03 APP F. BACKHURST 04AUG03

CHK - REL 02-04-04 M. CLIFFORD

NAME FINE ADJ SIDE FD HD-1 APPL MACHINE REF HD-1 APPL

SCALE - DWG NO 1528227 SHEET 1 OF 1 REV C

CUSTOMER AND ASSEMBLY DRAWING

THIS DRAWING IS A CONTROLLED DOCUMENT LAYOUT L1426403 SET UP GAGE 458637-3 2002 RELEASED FOR PUBLICATION BY AMP INCORPORATED. ALL RIGHTS RESERVED. THIS DRAWING IS UNPUBLISHED. © COPYRIGHT 2002 AMP 1756 REV 3-92

Mouser Electronics

Authorized Distributor

Click to View Pricing, Inventory, Delivery & Lifecycle Information:

[TE Connectivity:](#)

[1528227-1](#)