

DRAWING MADE IN THIRD ANGLE PROJECTION

1528179 ↔ 1528179

/nd/mbaum/middleton

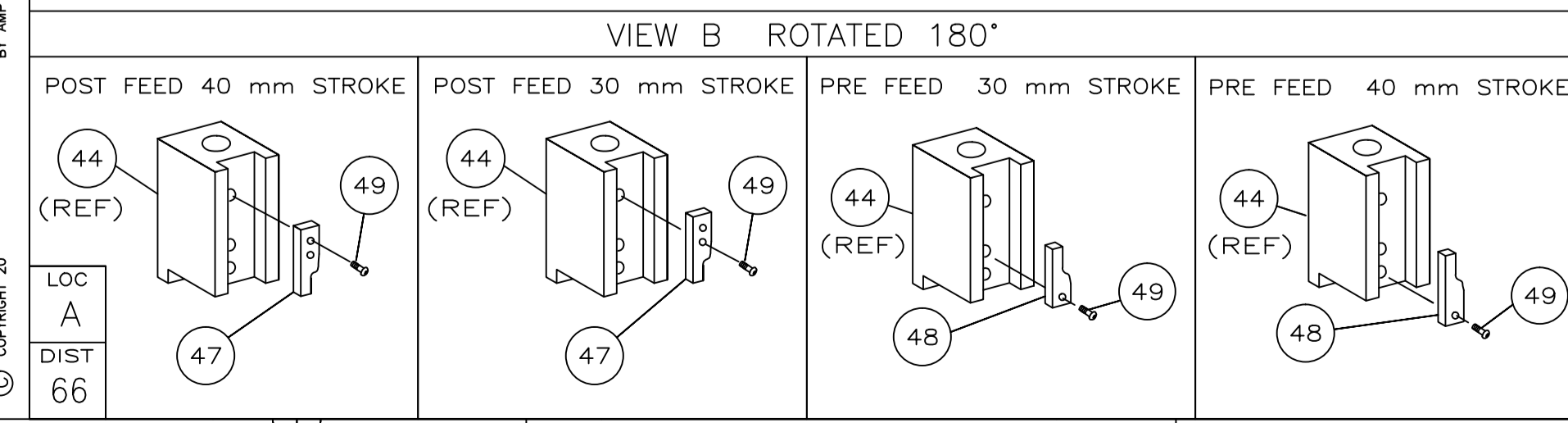
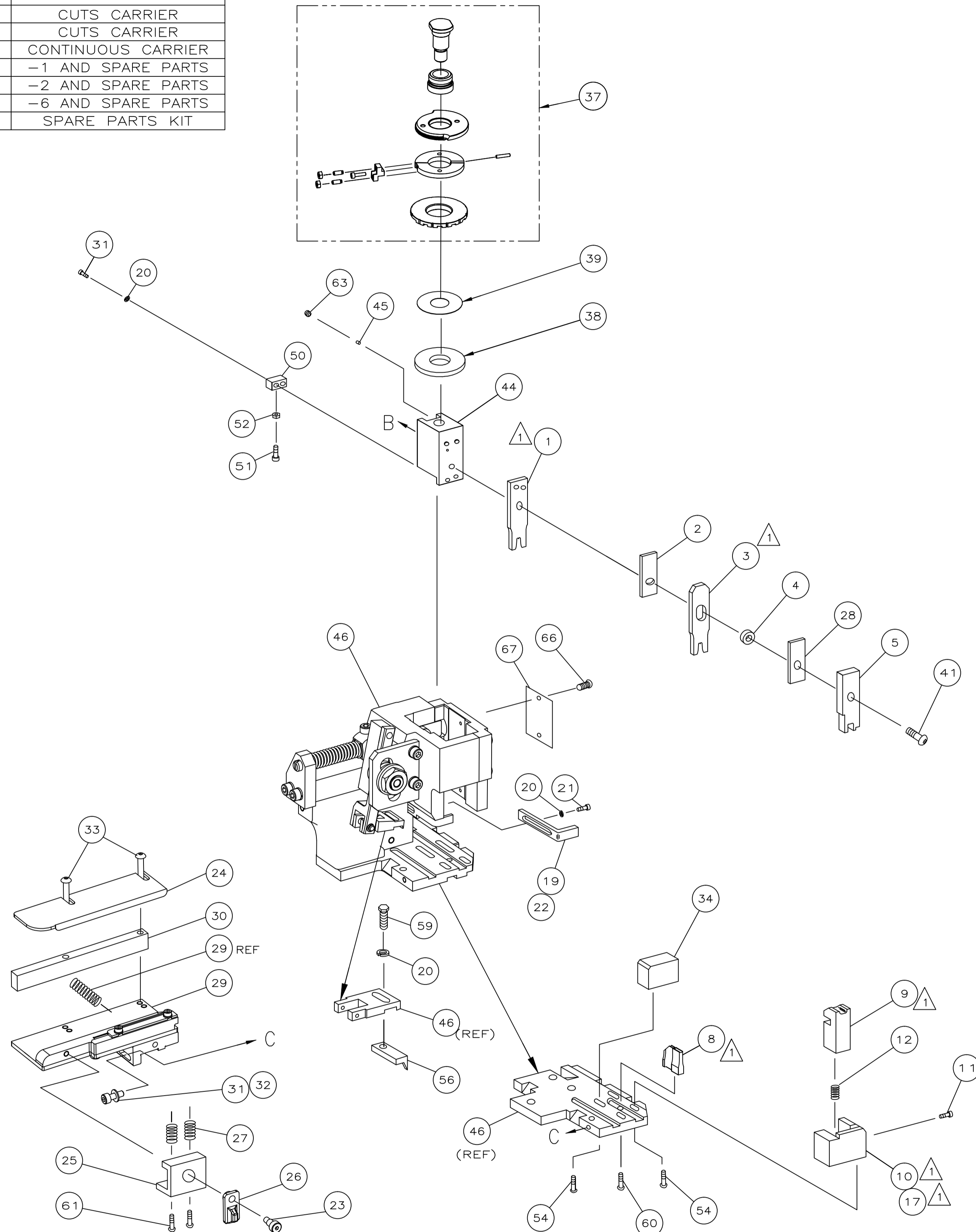
PART NUMBER	REV	FIRST USED	TERMINATOR	FEED TYPE	DESCRIPTION
1528179-1	D	-	LEADMAKER	MECH POST FEED	CUTS CARRIER
1528179-2	D	-	BENCH	MECH PRE FEED	CUTS CARRIER
1528179-6	D	-	LEADMAKER	MECH POST FEED	CONTINUOUS CARRIER
7-1528179-1	D	-	LEADMAKER	MECH POST FEED	-1 AND SPARE PARTS
7-1528179-2	D	-	BENCH	MECH PRE FEED	-2 AND SPARE PARTS
7-1528179-6	D	-	LEADMAKER	MECH POST FEED	-6 AND SPARE PARTS
7-1528179-7	D	-	-	-	SPARE PARTS KIT

CRIMP DATA AMP TERMINAL AMP CRIMP SPECS			
TERMINAL NAME: STANDARD POWER TIMER CONTACT			
CRIMP	SIZE	TYPE	RANGE
WIRE	2.03 [.080 IN]	F	0.5mm ² -1mm ²
INSUL	3.30 [.130 IN]	OV	2-2.7 [.079-.106 IN]
WIRE STRIP LENGTH	3.4-4 [.134-.157 IN]		APPL INSTRUCTION 408-8322 & 408-8490
TERMINAL	-	-	FEED
APPL SPEC	114-18037-1	-	15 [.63 IN]

TERMINALS APPLIED			
927827	-	-	-
1241834	-	-	-
-	-	-	-
-	-	-	-
-	-	-	-
-	-	-	-
-	-	-	-

WIRE SIZE mm ² AWG	CRIMP HEIGHT *	REF SETTING
1mm ²	1.56 ±0.05 [.061 ±0.002 IN]	A3
0.75mm ²	1.47 ±0.05 [.058 ±0.002 IN]	A8
(2)0.35mm ²	1.47 ±0.05 [.058 ±0.002 IN]	A9
20	1.39 ±0.05 [.055 ±0.002 IN]	B3
0.5mm ²	1.38 ±0.05 [.054 ±0.002 IN]	B5

- 1. RECOMMENDED SPARE PARTS.
- 2. GREASE RAM, CAM, CAM FOLLOWER AND FEED ROD LIGHTLY.
- 3. LUBRICATE DAILY PER THE APPLICATOR INSTRUCTION SHEET SUPPLIED WITH THE APPLICATOR.



*** WARNING:**
ON INSTALLATION, SET WIRE DISC TO LARGEST WIRE SIZE SETTING. USE OF SETTINGS BELOW MIN REQUIRED CRIMP HEIGHT SETTING WILL CAUSE DAMAGE TO CRIMP TOOLING.

QTY	REQD	PER	ASSY	PART NO	DESCRIPTION	ITEM NO			
-	1	1	1	1	1	1	1528179	PRINT, APPLICATOR LOG SHEET	73
-	1	1	1	1	1	1	1338705-3	DOCUMENTATION PACKAGE	72
-	1	1	1	1	1	1			71
-	1	1	1	1	1	1			70
-	1	1	1	1	1	1			69
-	1	1	1	1	1	1			68
-	1	1	1	1	1	1	461264-5	PLATE, IDENTIFICATION	67
-	2	2	2	2	2	2	21017-2	SCR,DRIVE(#2x.19)ID PLATE	66
-	1	1	1	1	1	1			65
-	1	1	1	1	1	1	3-18031-0	SCR,SKT SET(M6X6)RAM	64
-	1	1	1	1	1	1			63
-	2	2	2	2	2	2	2-18032-5	SCR,SOC SET(M5X20)DRAG	62
-	1	1	1	1	1	1	18024-7	SCR,BHC(M4X10)ANVIL	61
-	1	1	1	1	1	1	5-18022-2	SCR,HEX(M4X8)FEED FINGER	60
-	1	1	1	1	1	1			59
-	1	1	1	1	1	1			58
-	1	1	1	1	1	1	1338685-1	PAWL, FEED	57
-	1	1	1	1	1	1			56
-	4	4	4	4	4	4	18024-8	SCR,BHC(M4x12)SHEAR HOLDER	55
-	1	1	1	1	1	1			54
-	1	1	1	1	1	1	18030-1	NUT,HEX(M3)HOLD DOWN	53
-	1	1	1	1	1	1	811242-5	BUMPER, HOLDDOWN	52
-	1	1	1	1	1	1	690753-2	SPACER, TONKER	51
-	1	1	1	1	1	1	18024-3	SCR,BHC(M3X10)CAM	50
-	1	1	1	1	1	1	1338675-1	CAM, PRE FEED 30 & 40 mm ST	49
-	1	1	1	1	1	1	1338676-1	CAM, POST FEED 30 & 40 mm ST	48
-	1	1	1	1	1	1	1320999-3	APPLICATOR BASIC SUBASSY	47
-	1	1	1	1	1	1	690191-1	PLUG, NYLON	46
-	1	1	1	1	1	1	1338660-1	RAM	45
-	1	1	1	1	1	1			44
-	1	1	1	1	1	1			43
-	1	1	1	1	1	1			42
-	1	1	1	1	1	1	2-18024-6	SCR,BHC(M8X25)RAM	41
-	1	1	1	1	1	1			40
-	1	1	1	1	1	1	690125-1	SHIM SUBASSY	39
-	1	1	1	1	1	1	469367-9	SPACER, FINE ADJUST	38
-	1	1	1	1	1	1	879103-2	FINE ADJUST HEAD SUBASSY	37
-	1	1	1	1	1	1			36
-	1	1	1	1	1	1			35
-	1	1	1	1	1	1	1-1320934-2	SUPPORT, TERMINAL	34
-	2	2	2	2	2	2	1-18024-0	SCR,BHC(M4X20)STRIP GUIDE	33
-	1	1	1	1	1	1	18027-2	WASHER, FLAT(M4)	32
-	3	3	3	3	3	3	1-18023-2	SCR,SKT CAP(M4X12)MOUNT BLOCK	31
-	1	1	1	1	1	1	1-1320908-0	SPACER, STRIP GUIDE	30
-	1	1	1	1	1	1	1633073-1	STRIP GUIDE PLATE ASSY	29
-	1	1	1	1	1	1	1-455888-0	SPACER, FRONT SHEAR DEP	28
-	2	2	2	2	2	2	1-22284-0	SPRING, DRAG	27
-	1	1	1	1	1	1	356835-1	LEVER, DRAG RELEASE	26
-	1	1	1	1	1	1	240792-1	DRAG, TERMINAL	25
-	1	1	1	1	1	1	1320928-2	PLATE, STRIP GUIDE	24
-	1	1	1	1	1	1	980371-4	SCR,SHC SHLD	23
-	1	1	1	1	1	1	690472-2	STRIPPER	22
-	1	1	1	1	1	1	1-18023-1	SCR,SHC(M4X10)STRIPPER	21
-	4	4	4	4	4	4	18025-2	WASHER,LOCK(M4)STRIPPER	20
-	1	1	1	1	1	1	690472-1	STRIPPER	19
-	1	1	1	1	1	1			18
-	1	1	1	1	1	1	1338684-1	HOLDER, SHEAR, FRONT (NO-CUT)	17
-	1	1	1	1	1	1			16
-	1	1	1	1	1	1			15
-	1	1	1	1	1	1			14
-	1	1	1	1	1	1			13
-	1	1	1	1	1	1	3-22280-3	SPRING, SHEAR	12
-	1	1	1	1	1	1	356885-4	STOP, SHEAR	11
-	1	1	1	1	1	1	1320921-1	HOLDER, SHEAR, FRONT (CUT)	10
-	1	1	1	1	1	1	454276-1	SHEAR, FLOAT (FRONT)	9
1	2	2	2	1	1	1	2-133204-5	ANVIL	8
-	1	1	1	1	1	1			7
-	1	1	1	1	1	1			6
-	1	1	1	1	1	1	1-455889-4	DEPRESSOR, SHEAR (FRONT)	5
-	1	1	1	1	1	1	238011-7	SPACER, BLOCK CRIMPER	4
1	2	2	2	1	1	1	2-854830-3	CRIMPER, INSULATION	3
-	1	1	1	1	1	1	455888-9	SPACER, CRIMPER	2
1	2	2	2	1	1	1	6-1803188-3	CRIMPER, WIRE	1

QTY REQD PER ASSY				PARTS LIST			
DIMENSIONS: mm [INCHES]		MATERIAL		HT TR		FIN	
DO NOT SCALE PRINT.							
TOLERANCES UNLESS OTHERWISE SPECIFIED:							
1 PLC DEC ±		2 PLC DEC ±		3 PLC DEC ±		ANGLES ±	
SURF TEXTURE:		REMOVE BURRS, BREAK SHARP EDGES RO.38 MAX		SCALE		DWG NO	
P F LTR		REVISION RECORD		APP DATE		00779	
D ECR-16-000722		RS JAN16		29MAY03		29MAY03	
C ECR-06-020044		TM AUG08		REL		F.BACKHURST	
B ECR-06-005434		RK MAR06		CHK		TE Connectivity	
NAME				MACHINE REF			
FINE ADJ SIDE FD HD-I APPL				HD-I APPL			
SCALE		D		DWG NO		1528179	
SHEET		1 OF 1		REV		D	
CUSTOMER AND ASSEMBLY DRAWING				RESTRICTED TO			

THIS DRAWING IS A CONTROLLED DOCUMENT.

LAYOUT L1426149 SET UP GAGE 458637-3

THIS DRAWING IS UNPUBLISHED. RELEASED FOR PUBLICATION BY AMP INCORPORATED. ALL RIGHTS RESERVED. COPYRIGHT 2011

Mouser Electronics

Authorized Distributor

Click to View Pricing, Inventory, Delivery & Lifecycle Information:

[TE Connectivity:](#)

[1528179-2](#)