

4

3

2

1

THIS DRAWING IS UNPUBLISHED.

RELEASED FOR PUBLICATION

© COPYRIGHT

ALL RIGHTS RESERVED.

LOC DIST

REVISIONS

P	LTR	DESCRIPTION	DATE	DWN	APVD

REPLACED BY OCEAN STYLE APPLICATOR PART NUMBER

FOR REPLACEMENT PARTS FOR APPLICATOR REFER TO ADDITIONAL PAGE(S). SPARE PARTS KIT (IF LISTED) WILL REMAIN AVAILABLE.

THE REPLACEMENT OCEAN STYLE APPLICATOR HAS THE SAME TERMINATOR/PRESS INTERFACE AS APPLICATOR

THIS DRAWING IS A CONTROLLED DOCUMENT.		DWN	 TE Connectivity		
DIMENSIONS:		CHK			
TOLERANCES UNLESS OTHERWISE SPECIFIED:		APVD	NAME		
 <ul style="list-style-type: none"> 0 PLC ± 1 PLC ± 2 PLC ± 3 PLC ± 4 PLC ± ANGLES ± 		PRODUCT SPEC	RESTRICTED TO		
		APPLICATION SPEC	SIZE	CAGE CODE	DRAWING NO
MATERIAL	FINISH	WEIGHT	A3	C-	
		SCALE	SHEET	OF	REV

8

7

6

5

4

3

2

1

THIS DRAWING IS UNPUBLISHED. RELEASED FOR PUBLICATION. BY TYCO ELECTRONICS CORPORATION. ALL RIGHTS RESERVED.

LOC A DIST 66 REVISIONS P LWR DESCRIPTION DATE OWN APVD E1 ECR-07-024020 10-2007 MY TE

Table with columns: PART NUMBER, REV, FIRST USED, TERMINATOR, FEED TYPE, DESCRIPTION. Rows include parts like LEADMAKER MECH POST FEED CUTS CARRIER.

CRIMP DATA (AMP TERMINAL) TERMINAL NAME: .070 SERIES RECEPT. CONTACT

Table with columns: CRIMP, SIZE, TYPE, RANGE. Rows include WIRE 2.29 [.090 IN] F 0.50mm²-1.25mm² [20 - 16 AWG]

Table with columns: TERMINAL, APPL SPEC, FEED. Rows include 114-5091 (A) and 114-5091-3 (B).

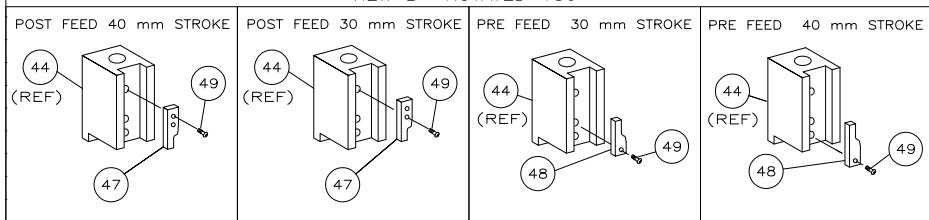
Table with columns: TERMINALS APPLIED, rows for 173631 (A), 175187 (B), and others.

Table with columns: WIRE SIZE mm² AWG, CRIMP HEIGHT, REF. SETTING. Rows include 16 AWG or 1.25mm², 18 AWG or 0.85mm², 20 AWG or 0.50mm².

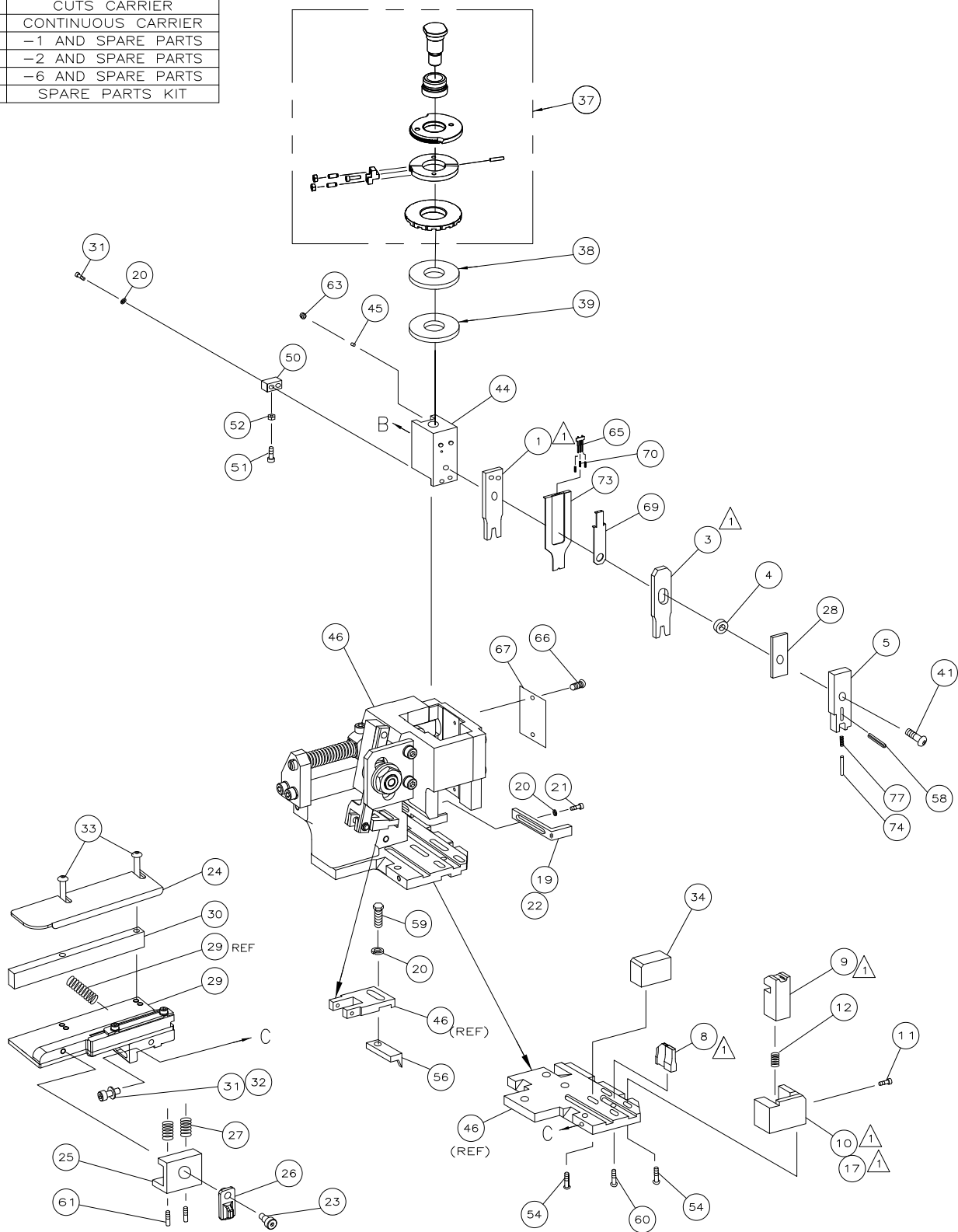
Table with columns: SET UP GAGE, LAYOUT. Rows include 458637-3 and L1426065.

- RECOMMENDED SPARE PARTS. 2. GREASE RAM, CAM, CAM FOLLOWER AND FEED ROD LIGHTLY. 3. LUBRICATE DAILY PER THE APPLICATOR INSTRUCTION SHEET SUPPLIED WITH THE APPLICATOR.

VIEW B ROTATED 180°



* WARNING: ON INSTALLATION, SET WIRE DISC TO LARGEST WIRE SIZE SETTING. USE OF SETTINGS BELOW MIN REQ'D CRIMP HEIGHT SETTING WILL CAUSE DAMAGE TO CRIMP TOOLING.



Large parts list table with columns for quantity, part number, description, and item number. Includes items like SPRING, COMP. (INS. DEP.), HOLDER, INSULATION, DEPRESSOR, WIRE, etc.

Technical drawing footer including dimensions (INCHES, DIMENSIONS: 0 PLC ±, 1 PLC ±, 2 PLC ±, 3 PLC ±, 4 PLC ±), tolerances, material, finish, and company information (Tyco Electronics Corporation).

Mouser Electronics

Authorized Distributor

Click to View Pricing, Inventory, Delivery & Lifecycle Information:

[TE Connectivity:](#)

[1528082-6](#)