

4

3

2

1

THIS DRAWING IS UNPUBLISHED.

RELEASED FOR PUBLICATION

© COPYRIGHT

ALL RIGHTS RESERVED.

LOC

DIST


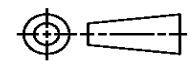
REVISIONS

P	LTR	DESCRIPTION	DATE	DWN	APVD

# REPLACED BY OCEAN STYLE APPLICATOR PART NUMBER

FOR REPLACEMENT PARTS FOR APPLICATOR REFER TO ADDITIONAL PAGE(S). SPARE PARTS KIT (IF LISTED) WILL REMAIN AVAILABLE.

THE REPLACEMENT OCEAN STYLE APPLICATOR HAS THE SAME TERMINATOR/PRESS INTERFACE AS APPLICATOR

THIS DRAWING IS A CONTROLLED DOCUMENT.		DWN	 TE Connectivity		
DIMENSIONS:		CHK			
TOLERANCES UNLESS OTHERWISE SPECIFIED:		APVD	NAME		
		PRODUCT SPEC	RESTRICTED TO		
		APPLICATION SPEC	SIZE	CAGE CODE	DRAWING NO
MATERIAL	FINISH	WEIGHT	A3	C-	
		SCALE	SHEET	OF	REV

PART NUMBER	REV	FIRST USED	TERMINATOR	FEED TYPE	DESCRIPTION
1528064-1	D		LEADMAKER	MECH POST FEED	CUTS CARRIER
1528064-2	D		BENCH	MECH PRE FEED	CUTS CARRIER
1528064-6	D		LEADMAKER	MECH POST FEED	CONTINUOUS CARRIER
7-1528064-1	D		LEADMAKER	MECH POST FEED	-1 AND SPARE PARTS
7-1528064-2	D		BENCH	MECH PRE FEED	-2 AND SPARE PARTS
7-1528064-6	D		LEADMAKER	MECH POST FEED	-6 AND SPARE PARTS
7-1528064-7	A				SPARE PARTS KIT

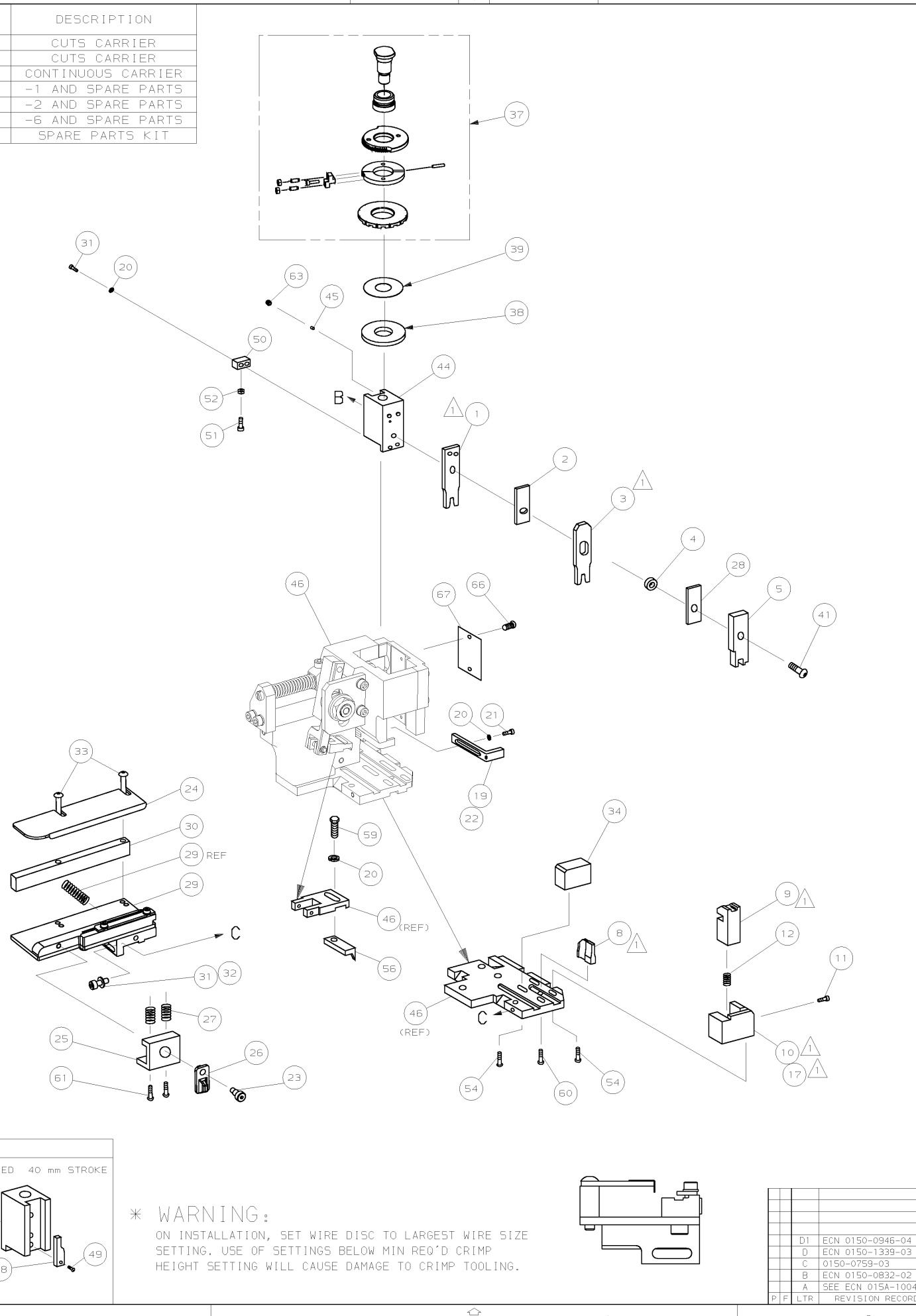
CRIMP DATA AMP TERMINAL AMP CRIMP SPECS			
TERMINAL NAME: MOS RECEPTACLE.			
CRIMP	SIZE	TYPE	RANGE
WIRE	1.40 [0.055 IN]	F	0.22mm <sup>2</sup> - 0.50mm <sup>2</sup>
INSUL	2.03 [0.080 IN]	0	1.15-1.90 [0.045-.075 IN]
WIRE STRIP LENGTH	APPL INSTRUCTION		
2.95-3.45 [1.116-.136 IN]	408-8322 & 408-8490		
TERMINAL APPL SPEC	114-15077	FEED	7.00 [1.276 IN]

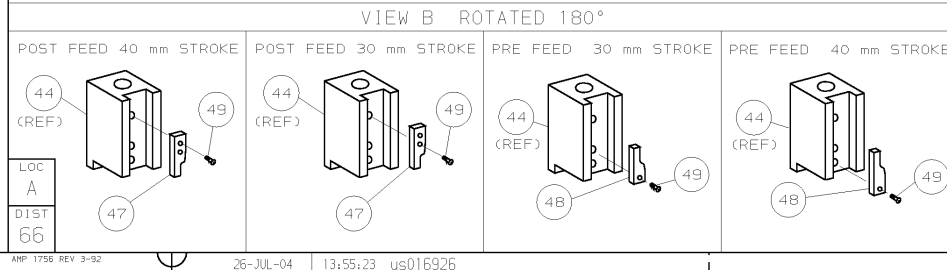
TERMINALS APPLIED			
144969	-	-	-
-	-	-	-
-	-	-	-
-	-	-	-
-	-	-	-
-	-	-	-
-	-	-	-
-	-	-	-
-	-	-	-
-	-	-	-

WIRE SIZE mm <sup>2</sup> AWG	CRIMP HEIGHT	REF SETTING
0.60mm <sup>2</sup>	0.92 ±0.05 [0.036 ±.002 IN]	B4
0.50mm <sup>2</sup>	0.84 ±0.05 [0.033 ±.002 IN]	C1
0.35mm <sup>2</sup>	0.77 ±0.05 [0.030 ±.002 IN]	C5
0.22mm <sup>2</sup>	0.69 ±0.05 [0.027 ±.002 IN]	D1
-	-	-
-	-	-
-	-	-
-	-	-
-	-	-
-	-	-
-	-	-
-	-	-
-	-	-
-	-	-
-	-	-
-	-	-
-	-	-
-	-	-
-	-	-
-	-	-
-	-	-
-	-	-
-	-	-
-	-	-



- RECOMMENDED SPARE PARTS.
- GREASE RAM, CAM, CAM FOLLOWER AND FEED ROD LIGHTLY.
- LUBRICATE DAILY PER THE APPLICATOR INSTRUCTION SHEET SUPPLIED WITH THE APPLICATOR.



**\* WARNING:**  
ON INSTALLATION, SET WIRE DISC TO LARGEST WIRE SIZE SETTING. USE OF SETTINGS BELOW MIN REQ'D CRIMP HEIGHT SETTING WILL CAUSE DAMAGE TO CRIMP TOOLING.

QTY	REQD PER ASSY	PART NO	DESCRIPTION	ITEM NO
-	1	1528064	PRINT, APPLICATOR LOG SHEET	72
-	1	1338705-3	DOCUMENTATION PACKAGE	71
-	-	-	-	70
-	-	-	-	69
-	-	-	-	68
-	1	461264-5	PLATE, IDENTIFICATION	67
-	2	21017-2	SCR,DRIVE(#2X.19)ID PLATE	66
-	-	-	-	65
-	1	3-18031-0	SCR,SKT SET(M6X6)RAM	63
-	-	-	-	62
-	2	1-18024-5	SCR,BHC(M5X25)DRAG	61
-	1	18024-7	SCR,BHC(M4X10)ANVIL	60
-	1	5-18022-2	SCR,HEX(M4X8)FEED FINGER	59
-	-	-	-	58
-	-	-	-	57
-	1	1338685-1	PAWL, FEED	56
-	-	-	-	55
-	4	18024-8	SCR,BHC(M4X12)SHEAR HOLDER	54
-	-	-	-	53
-	1	18030-1	NUT,HEX(M3)HOLD DOWN	52
-	1	811242-5	BUMPER, HOLDDOWN	51
-	1	690753-2	SPACER, TONKER	50
-	1	18024-3	SCR,BHC(M3X10)CAM	49
-	-	-	-	48
-	1	1338675-1	CAM, PRE FEED 30 & 40 mm ST	48
-	1	1338676-1	CAM, POST FEED 30 & 40 mm ST	47
-	1	1320999-3	APPLICATOR BASIC SUBASSY	46
-	1	690191-1	PLUG, NYLON	45
-	1	1338660-1	RAM	44
-	-	-	-	43
-	-	-	-	42
-	1	2-18024-6	SCR,BHC(M8X25)RAM	41
-	-	-	-	40
-	1	690125-1	SHIM SUBASSY	39
-	1	469367-8	SPACER, FINE ADJUST	38
-	1	879103-3	FINE ADJUST HEAD SUBASSY	37
-	-	-	-	36
-	-	-	-	35
-	1	1320934-5	SUPPORT, TERMINAL	34
-	2	1-18024-0	SCR,BHC(M4X20)STRIP GUIDE	33
-	1	18027-2	WASHER, FLAT(M4)	32
-	3	1-18023-2	SCR,SKT CAP(M4X12)MOUNT BLOCK	31
-	1	1320908-4	SPACER, STRIP GUIDE	30
-	1	1633073-1	STRIP GUIDE PLATE ASSY	29
-	1	1-455888-0	SPACER, FRONT SHEAR DEP	28
-	2	1-22284-0	SPRING, DRAG	27
-	1	356835-1	LEVER, DRAG RELEASE	26
-	1	240792-1	DRAG, TERMINAL	25
-	1	1320928-1	PLATE, STRIP GUIDE	24
-	1	980371-4	SCR,SHC 5HLD	23
-	1	690472-2	STRIPPER	22
-	1	1-18023-1	SCR,SHC(M4X10)STRIPPER	21
-	4	18025-2	WASHER,LOCK(M4)STRIPPER	20
-	-	-	-	19
-	1	690472-1	STRIPPER	18
-	-	-	-	17
-	-	-	-	16
-	-	-	-	15
-	-	-	-	14
-	-	-	-	13
-	1	5-22280-0	SPRING, SHEAR	12
-	1	356885-4	STOP, SHEAR	11
-	-	-	-	10
-	1	1320921-1	HOLDER, SHEAR, FRONT (CUT)	9
-	1	462006-1	SHEAR, FLOAT (FRONT)	9
-	1	3-1333201-7	ANVIL	8
-	-	-	-	7
-	-	-	-	6
-	1	2-455889-0	DEPRESSOR, SHEAR (FRONT)	5
-	1	1-238011-0	SPACER, BLOCK CRIMPER	4
-	1	7-683454-8	CRIMPER, INSULATION	3
-	1	455888-5	SPACER, CRIMPER	2
-	1	4-456402-1	CRIMPER, WIRE	1

DR	APP	HT TR	FIN
L.LOFTHOUSE	F.BACKHURST		
CHK -	REL 07-12-01	M.CLIFFORD	
NAME	FINE ADJ SIDE FD HD-I APPL		
SCALE	D	DWG NO	1528064
DATE	00779	REV	1 of 1
CASE CODE	CUSTOMER AND ASSEMBLY DRAWING		

THIS DRAWING IS A CONTROLLED DOCUMENT. LAYOUT L1528064 SET UP GAGE 458637-3. THIS DRAWING IS UNPUBLISHED. RELEASED FOR PUBLICATION BY AMP INCORPORATED. ALL RIGHTS RESERVED. © COPYRIGHT 2001 AMP 1756 REV 3-92 26-JUL-04 13:55:23 us016926

1528064

# Mouser Electronics

Authorized Distributor

Click to View Pricing, Inventory, Delivery & Lifecycle Information:

[TE Connectivity:](#)

[1528064-6](#)