

4

3

2

1

THIS DRAWING IS UNPUBLISHED.

RELEASED FOR PUBLICATION

© COPYRIGHT

ALL RIGHTS RESERVED.

LOC

DIST


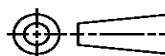
REVISIONS

P	LTR	DESCRIPTION	DATE	DWN	APVD

# REPLACED BY OCEAN STYLE APPLICATOR PART NUMBER

FOR REPLACEMENT PARTS FOR APPLICATOR REFER TO ADDITIONAL PAGE(S). SPARE PARTS KIT (IF LISTED) WILL REMAIN AVAILABLE.

THE REPLACEMENT OCEAN STYLE APPLICATOR HAS THE SAME TERMINATOR/PRESS INTERFACE AS APPLICATOR

THIS DRAWING IS A CONTROLLED DOCUMENT.		DWN	 <b>TE Connectivity</b>			
DIMENSIONS:		CHK				
		APVD	NAME			
TOLERANCES UNLESS OTHERWISE SPECIFIED:		PRODUCT SPEC	APPLICATION SPEC			
0 PLC ± 1 PLC ± 2 PLC ± 3 PLC ± 4 PLC ± ANGLES ±		WEIGHT	SIZE	CAGE CODE	DRAWING NO	RESTRICTED TO
MATERIAL	FINISH		A3		C-	
		SCALE	SHEET	OF	REV	

PART NUMBER	REV	FIRST USED	TERMINATOR	FEED TYPE	DESCRIPTION
1528059-1	G	-	LEADMAKER	MECH POST FEED	CUTS CARRIER
1528059-2	G	-	BENCH	MECH PRE FEED	CUTS CARRIER
1528059-6	G	-	LEADMAKER	MECH POST FEED	CONTINUOUS CARRIER
7-1528059-1	G	-	LEADMAKER	MECH POST FEED	-1 AND SPARE PARTS
7-1528059-2	G	-	BENCH	MECH PRE FEED	-2 AND SPARE PARTS
7-1528059-6	G	-	LEADMAKER	MECH POST FEED	-6 AND SPARE PARTS
7-1528059-7	E	-	-	-	SPARE PARTS KIT

**CRIMP DATA (AMP TERMINAL)**  
 TERMINAL NAME: UNIVERSAL M-N-L PIN & SOCKET

CRIMP	SIZE	TYPE	RANGE
WIRE	2.29 [.090 IN]	F	20-14 AWG or 0.5-2.0mm <sup>2</sup>
INSUL	3.30 [.130 IN]	F	2.00-3.30 [0.079-.130 IN]

WIRE STRIP LENGTH: 4.00-4.75 [.157-.189 IN]      APPL INSTRUCTION: 408-8322 & 408-8490

TERMINAL	-	-	FEED
APPL SPEC	114-18011	-	10.92 [.430 IN]

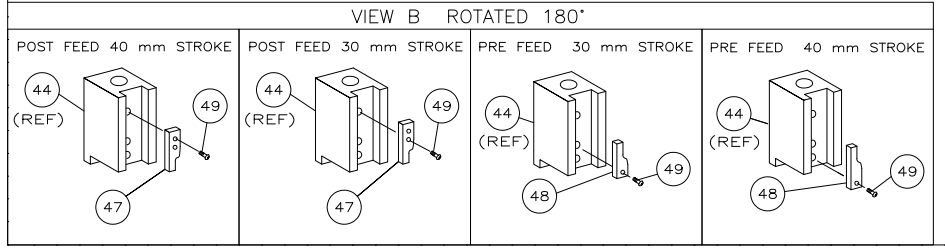
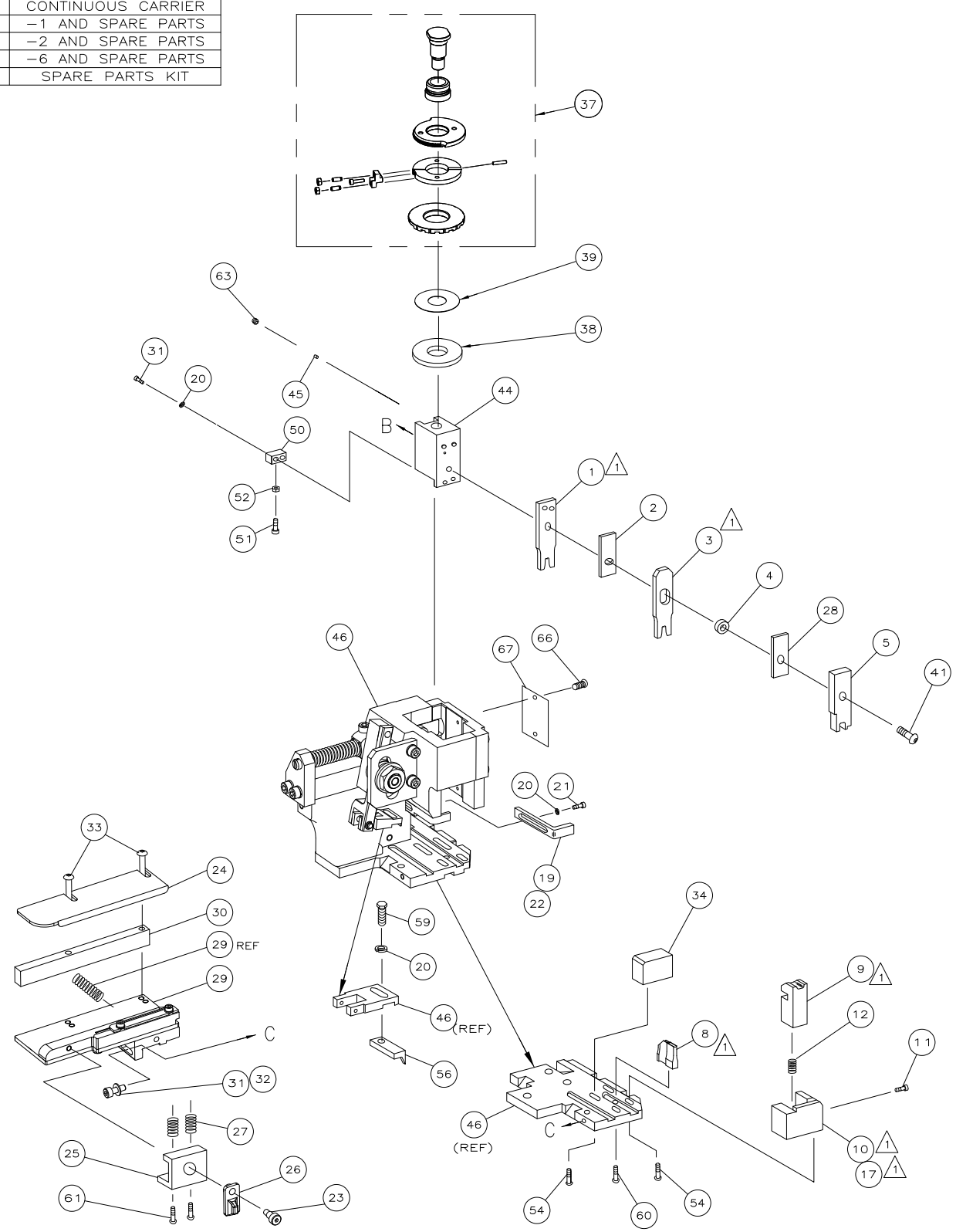
**TERMINALS APPLIED**

926882	926883	926887	927965
SOCKET	PIN	PIN	SOCKET
-	-	-	-
-	-	-	-
-	-	-	-

WIRE SIZE mm <sup>2</sup> AWG	CRIMP HEIGHT *	REF SETTING *
14 AWG	1.73 ±0.05 [.068 ±0.002 IN]	B5
2.00mm <sup>2</sup>	1.70 ±0.05 [.067 ±0.002 IN]	B7
1.50mm <sup>2</sup>	1.53 ±0.05 [.060 ±0.002 IN]	C7
16 AWG	1.47 ±0.05 [.058 ±0.002 IN]	C9
1.25mm <sup>2</sup>	1.45 ±0.05 [.057 ±0.002 IN]	D0
1.00mm <sup>2</sup>	1.37 ±0.05 [.054 ±0.002 IN]	D5
18 AWG	1.30 ±0.05 [.051 ±0.002 IN]	D9
0.75mm <sup>2</sup>	1.29 ±0.05 [.051 ±0.002 IN]	D9
20 AWG	1.22 ±0.05 [.048 ±0.002 IN]	E5
0.50mm <sup>2</sup>	1.21 ±0.05 [.048 ±0.002 IN]	E5

SET UP GAGE	LAYOUT
458637-3	L1426087

- 1 RECOMMENDED SPARE PARTS.
- 2. GREASE RAM, CAM, CAM FOLLOWER AND FEED ROD LIGHTLY.
- 3. LUBRICATE DAILY PER THE APPLICATOR INSTRUCTION SHEET SUPPLIED WITH THE APPLICATOR.



**\* WARNING:**  
 ON INSTALLATION, SET WIRE DISC TO LARGEST WIRE SIZE SETTING. USE OF SETTINGS BELOW MIN REQ'D CRIMP HEIGHT SETTING WILL CAUSE DAMAGE TO CRIMP TOOLING.

QTY	REQD	PER	ASSY	PART NO	DESCRIPTION	ITEM NO
-	1	1	1	1	1	73
-	1	1	1	1	1	72
-	1	1	1	1	1	71
						70
						69
						68
-	1	1	1	1	1	67
-	2	2	2	2	2	66
						65
						64
-	1	1	1	1	1	63
						62
-	2	2	2	2	2	61
-	1	1	1	1	1	60
-	1	1	1	1	1	59
						58
						57
-	1	1	1	1	1	56
-	4	4	4	4	4	55
						54
						53
-	1	1	1	1	1	52
-	1	1	1	1	1	51
-	1	1	1	1	1	50
-	1	1	1	1	1	49
-	-	1	-	-	-	48
-	1	-	1	-	-	47
-	1	1	1	1	1	46
-	1	1	1	1	1	45
-	1	1	1	1	1	44
						43
						42
-	1	1	1	1	1	41
						40
-	1	1	1	1	1	39
-	1	1	1	1	1	38
-	1	1	1	1	1	37
						36
						35
-	1	1	1	1	1	34
-	2	2	2	2	2	33
-	1	1	1	1	1	32
-	3	3	3	3	3	31
-	1	1	1	1	1	30
-	1	1	1	1	1	29
-	1	1	1	1	1	28
-	2	2	2	2	2	27
-	1	1	1	1	1	26
-	1	1	1	1	1	25
-	1	1	1	1	1	24
-	1	1	1	1	1	23
-	1	-	1	-	-	22
-	1	1	1	1	1	21
-	4	4	4	4	4	20
-	-	1	-	-	-	19
						18
1	-	-	-	-	-	17
						16
						15
						14
						13
-	1	1	1	1	1	12
-	1	1	1	1	1	11
-	-	1	-	-	-	10
-	1	1	1	1	1	9
1	2	2	2	1	1	8
						7
						6
-	1	1	1	1	1	5
-	1	1	1	1	1	4
1	2	2	2	1	1	3
-	1	1	1	1	1	2
1	2	2	2	1	1	1
-77	-76	-72	-71	-6	-2	-1

THIS DRAWING IS A CONTROLLED DOCUMENT.

APPROVED: F. BACKHURST

DATE: 11-2008

DESCRIPTION: FINE ADJ SIDE FD HD-1 APPL

SIZE: A1

SCALE: 1 of 1

REV: G

# Mouser Electronics

Authorized Distributor

Click to View Pricing, Inventory, Delivery & Lifecycle Information:

[TE Connectivity:](#)

[1528059-2](#)