

PART NUMBER	REV	FIRST USED	TERMINATOR	FEED TYPE	DESCRIPTION
1528047-1	C	-	LEADMAKER	MECH POST FEED	CUTS CARRIER
1528047-2	C	-	BENCH	MECH PRE FEED	CUTS CARRIER
1528047-6	C	-	LEADMAKER	MECH POST FEED	CONTINUOUS CARRIER
7-1528047-1	C	-	LEADMAKER	MECH POST FEED	-1 AND SPARE PARTS
7-1528047-2	C	-	BENCH	MECH PRE FEED	-2 AND SPARE PARTS
7-1528047-6	C	-	LEADMAKER	MECH POST FEED	-6 AND SPARE PARTS
7-1528047-7	A	-	-	-	SPARE PARTS KIT

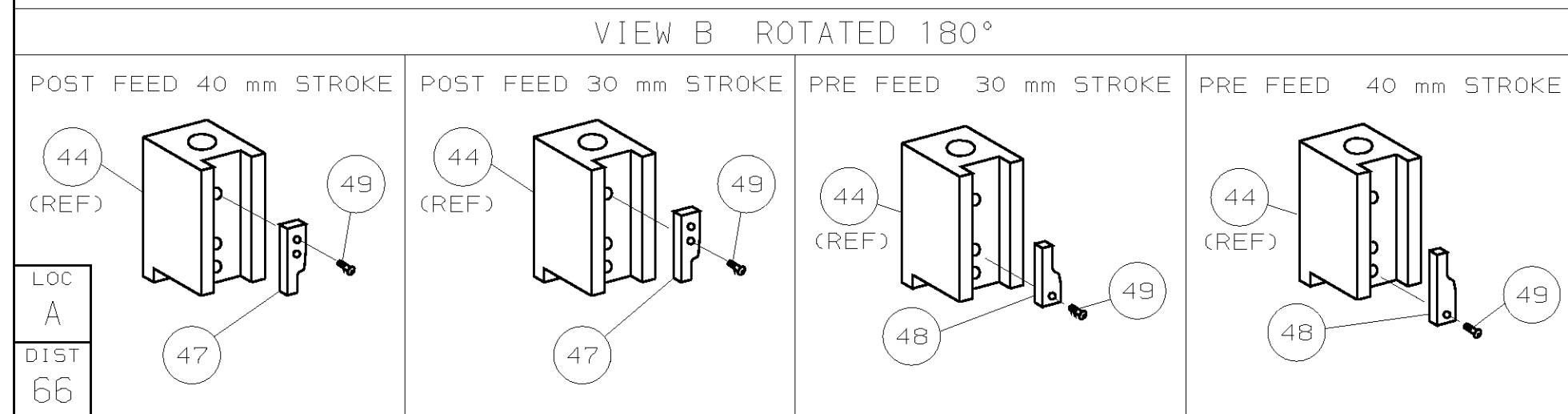
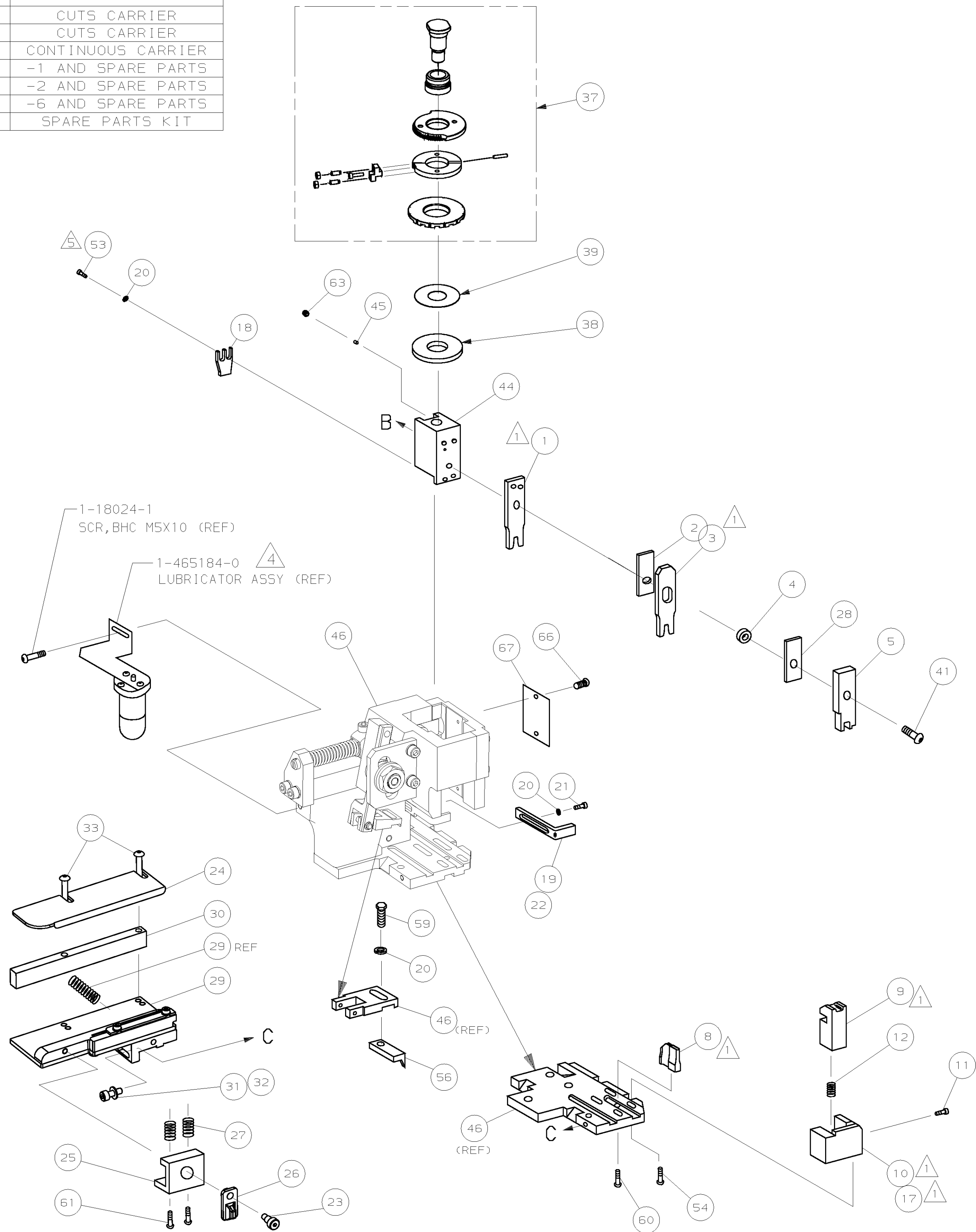
CRIMP DATA AMP TERMINAL AMP CRIMP SPECS			
TERMINAL NAME: CONTACT, PIN MOD IV			
CRIMP	SIZE	TYPE	RANGE
WIRE	1.07 [.042 IN]	F	26 - 22 AWG
INSUL	1.57 [.062 IN]	0	1.55 MAX [.061 MAX]
WIRE STRIP LENGTH	APPL INSTRUCTION		
2.77-4.37 [.109-.172 IN]	408-8322 & 408-8490		

TERMINAL	FEED
APPL SPEC 114-25016	7.62 [.300 IN]

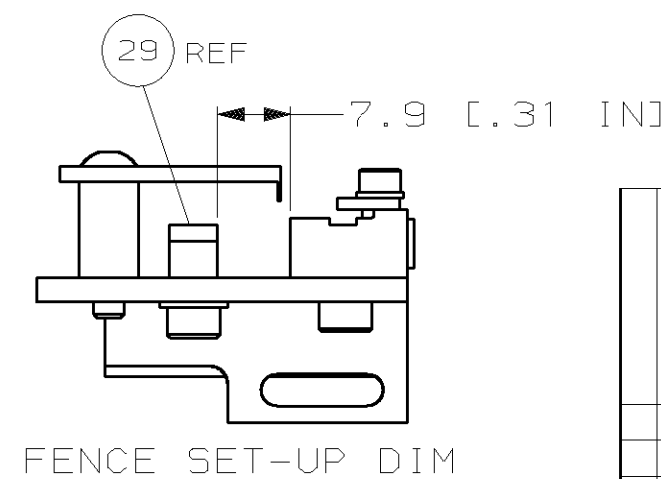
TERMINALS APPLIED				
102095	-	-	-	-
166678	-	-	-	-
-	-	-	-	-
-	-	-	-	-
-	-	-	-	-
-	-	-	-	-
-	-	-	-	-
-	-	-	-	-
-	-	-	-	-
-	-	-	-	-
-	-	-	-	-

WIRE SIZE mm ² AWG	CRIMP HEIGHT	REF SETTING
22 AWG	0.91 ± 0.05 [.036 ± .002 IN]	C 8
24 AWG	0.81 ± 0.05 [.032 ± .002 IN]	D 5
26 AWG	0.76 ± 0.05 [.030 ± .002 IN]	D 9
-	-	-
-	-	-
-	-	-
-	-	-
-	-	-
-	-	-
-	-	-
-	-	-
-	-	-
-	-	-
-	-	-
-	-	-
-	-	-
-	-	-
-	-	-
-	-	-
-	-	-
-	-	-
-	-	-

- RECOMMENDED SPARE PARTS.
- 2. GREASE RAM, CAM, CAM FOLLOWER AND FEED ROD LIGHTLY.
- 3. LUBRICATE DAILY PER THE APPLICATOR INSTRUCTION SHEET SUPPLIED WITH THE APPLICATOR.
- CERTAIN TERMINALS REQUIRE LUBRICATION. REFER TO THE APPLICATOR INSTRUCTION SHEET FOR MORE INFORMATION.
- CUT TO LENGTH AT ASSY.



*** WARNING:**
ON INSTALLATION, SET WIRE DISC TO LARGEST WIRE SIZE SETTING. USE OF SETTINGS BELOW MIN REQ'D CRIMP HEIGHT SETTING WILL CAUSE DAMAGE TO CRIMP TOOLING.



-	1	1	1	1	1	1	1528047	PRINT, APPLICATOR LOG SHEET	73
-	1	1	1	1	1	1	1338705-3	DOCUMENTATION PACKAGE	71
-	-	-	-	-	-	-	-	-	70
-	-	-	-	-	-	-	-	-	69
-	-	-	-	-	-	-	-	-	68
-	1	1	1	1	1	1	461264-5	PLATE, IDENTIFICATION	67
-	2	2	2	2	2	2	21017-2	SCR,DRIVE (#2x.19) ID PLATE	66
-	-	-	-	-	-	-	-	-	65
-	-	-	-	-	-	-	-	-	64
-	1	1	1	1	1	1	3-18031-0	SCR,SKT SET (M6X6) RAM	63
-	-	-	-	-	-	-	-	-	62
-	2	2	2	2	2	2	1-18024-5	SCR,BHC (M5X25) DRAG	61
-	1	1	1	1	1	1	18024-7	SCR,BHC (M4X10) ANVIL	60
-	1	1	1	1	1	1	5-18022-2	SCR,HEX (M4X8) FEED FINGER	59
-	-	-	-	-	-	-	-	-	58
-	-	-	-	-	-	-	-	-	57
-	1	1	1	1	1	1	1338685-1	PAWL, FEED	56
-	-	-	-	-	-	-	-	-	55
-	2	2	2	2	2	2	18024-8	SCR,BHC (M4X12) SHEAR HOLDER	54
	2	2	2	2	2	2	1-18023-0	SCR,SHC (M4X8) TERM HLD DWN	53
-	-	-	-	-	-	-	-	-	52
-	-	-	-	-	-	-	-	-	51
-	-	-	-	-	-	-	-	-	50
-	1	1	1	1	1	1	18024-3	SCR,BHC (M3X10) CAM	49
-	-	-	-	-	-	-	-	-	48
-	1	-	1	-	1	-	1338675-1	CAM, PRE FEED 30 & 40 mm ST	47
-	1	-	1	-	1	-	1338676-1	CAM, POST FEED 30 & 40 mm ST	47
-	1	1	1	1	1	1	1320999-3	APPLICATOR BASIC SUBASSY	46
-	1	1	1	1	1	1	690191-1	PLUG, NYLON	45
-	1	1	1	1	1	1	1338660-1	RAM	44
-	-	-	-	-	-	-	-	-	43
-	-	-	-	-	-	-	-	-	42
-	1	1	1	1	1	1	2-18024-6	SCR,BHC (M8X25) RAM	41
-	-	-	-	-	-	-	-	-	40
-	1	1	1	1	1	1	690125-1	SHIM SUBASSY	39
-	1	1	1	1	1	1	469367-7	SPACER, FINE ADJUST	38
-	1	1	1	1	1	1	879103-3	FINE ADJUST HEAD SUBASSY	37
-	-	-	-	-	-	-	-	-	36
-	-	-	-	-	-	-	-	-	35
-	-	-	-	-	-	-	-	-	34
-	2	2	2	2	2	2	1-18024-0	SCR,BHC (M4X20) STRIP GUIDE	33
-	1	1	1	1	1	1	18027-2	WASHER, FLAT (M4)	32
-	1	1	1	1	1	1	1-18023-2	SCR,SKT CAP (M4X12) MOUNT BLOCK	31
-	1	1	1	1	1	1	1320908-9	SPACER, STRIP GUIDE	30
-	1	1	1	1	1	1	1633073-1	STRIP GUIDE PLATE ASSY	29
-	1	1	1	1	1	1	1-455888-0	SPACER, FRONT SHEAR DEP	28
-	2	2	2	2	2	2	1-22284-0	SPRING, DRAG	27
-	1	1	1	1	1	1	356835-1	LEVER, DRAG RELEASE	26
-	1	1	1	1	1	1	240792-1	DRAG, TERMINAL	25
-	1	1	1	1	1	1	1320928-1	PLATE, STRIP GUIDE	24
-	1	1	1	1	1	1	980371-4	SCR,SHC SHLD	23
-	1	-	1	-	1	-	690472-2	STRIPPER	22
-	1	1	1	1	1	1	1-18023-1	SCR,SHC (M4X10) STRIPPER	21
-	4	4	4	4	4	4	18025-2	WASHER,LOCK (M4) STRIPPER	20
-	-	1	-	-	1	-	1424364-1	STRIPPER, WIRE STOP	19
-	1	1	1	1	1	1	690518-2	HOLDER, TERMINAL	18
-	1	-	-	1	-	-	1338684-1	HOLDER, SHEAR, FRONT (NO-CUT)	17
-	-	-	-	-	-	-	-	-	16
-	-	-	-	-	-	-	-	-	15
-	-	-	-	-	-	-	-	-	14
-	1	1	1	1	1	1	5-22280-0	SPRING, SHEAR	13
-	1	1	1	1	1	1	356885-4	STOP, SHEAR	11
-	-	1	1	-	1	1	1320921-1	HOLDER, SHEAR, FRONT (CUT)	10
	1	1	1	1	1	1	462006-1	SHEAR, FLOAT (FRONT)	9
	1	2	2	2	1	1	1-1333200-9	ANVIL	8
-	-	-	-	-	-	-	-	-	7
-	-	-	-	-	-	-	-	-	6
-	1	1	1	1	1	1	2-455889-0	DEPRESSOR, SHEAR (FRONT)	5
-	1	1	1	1	1	1	1-238011-3	SPACER, BLOCK CRIMPER	4
	1	2	2	2	1	1	7-456135-8	CRIMPER, INSULATION	3
-	1	1	1	1	1	1	455888-4	SPACER, CRIMPER	2
	1	2	2	2	1	1	456401-3	CRIMPER, WIRE	1

REVISION OF EACH ASSY NO (WHEN BLANK, USE DWG REVISION)				PARTS LIST				DIMENSIONS: mm [INCHES]				MATERIAL							
QTY		REQD PER ASSY		MATL		HT TR		FIN		DO NOT SCALE PRINT.									
TOLERANCES UNLESS OTHERWISE SPECIFIED:												DR		APP					
1		2		3		4		5		6-02		17SEP01		F.BACKHURST					
1 PLC DEC ± 0.5 [.02 IN]				2 PLC DEC ±				3 PLC DEC ±				REL 23OCT01							
ANGLE ±												SURF TEXTURE: <input checked="" type="checkbox"/>							
REMOVE BURRS, BREAK SHARP EDGES RO.38 MAX												NAME				FINE ADJ SIDE FD HD-I APPL			
SCALE		DWG NO		1528047		SHEET		REV		MACHINE REF									
D		D		1528047		1 OF 1		C		APPL									
P/F LTR				REVISION RECORD				APP DATE				CASE CODE							
00779												CUSTOMER AND ASSEMBLY DRAWING				RESTRICTED TO			

THIS DRAWING IS A CONTROLLED DOCUMENT.

LAYOUT L1528047

SET UP GAGE 458637-3

2000

RELEASING FOR PUBLICATION BY AMP INCORPORATED. ALL RIGHTS RESERVED.

THIS DRAWING IS UNRELEASED. COPYRIGHT 2000

Mouser Electronics

Authorized Distributor

Click to View Pricing, Inventory, Delivery & Lifecycle Information:

[TE Connectivity:](#)

[1528047-1](#)