

4

3

2

1


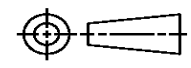
THIS DRAWING IS UNPUBLISHED. RELEASED FOR PUBLICATION
© COPYRIGHT ALL RIGHTS RESERVED.

LOC	DIST	REVISIONS			
P	LTR	DESCRIPTION	DATE	DWN	APVD
	B1	ECR-14-001878	10FEB2014	GK	HMR

REPLACED BY OCEAN STYLE APPLICATOR PART NUMBER 2151124-1

FOR REPLACEMENT PARTS FOR APPLICATOR 1426365
REFER TO ADDITIONAL PAGE(S). SPARE PARTS KIT (IF LISTED)
WILL REMAIN AVAILABLE.

THE REPLACEMENT OCEAN STYLE APPLICATOR HAS THE
SAME TERMINATOR/PRESS INTERFACE AS APPLICATOR
1426365

THIS DRAWING IS A CONTROLLED DOCUMENT.		DWN	GOPALAKRISHNA HV			TE Connectivity	
DIMENSIONS:		CHK	RAGHAVENDRA			NAME	
		TOLERANCES UNLESS OTHERWISE SPECIFIED:		APVD	SIDE FEED HD-I APPLICATOR		
		0 PLC ±	1 PLC ±	PRODUCT SPEC			
MATERIAL		2 PLC ±	3 PLC ±	APPLICATION SPEC			
FINISH		4 PLC ±	ANGLES ±	SIZE	CAGE CODE	DRAWING NO	RESTRICTED TO
				A3		©- 1426365	
				CUSTOMER DRAWING		SCALE	SHEET 1 OF 2 REV B1

PART NUMBER	REV	FIRST USED	TERMINATOR	FEED TYPE	DESCRIPTION
1426365-1	B	-	LEADMAKER	MECH POST FEED	CUTS CARRIER
1426365-2	B	-	BENCH	MECH PRE FEED	CUTS CARRIER
1426365-6	B	-	LEADMAKER	MECH POST FEED	CONTINUOUS CARRIER
7-1426365-1	B	-	LEADMAKER	MECH POST FEED	-1 AND SPARE PARTS
7-1426365-2	B	-	BENCH	MECH PRE FEED	-2 AND SPARE PARTS
7-1426365-6	B	-	LEADMAKER	MECH POST FEED	-6 AND SPARE PARTS
7-1426365-7	A	-	-	-	SPARE PARTS KIT

CRIMP DATA AMP TERMINAL AMP CRIMP SPECS			
TERMINAL NAME: HYBRID MINI DRAWER CONNECTOR TAB AND RECEIPT			
CRIMP	SIZE	TYPE	RANGE
WIRE	1.57 [.062 IN]	F	24-20 AWG (0.2mm ² -0.5mm ²)
INSUL	3.05 [.120 IN]	F	1.30-2.42 [.051-.095 IN]
WIRE STRIP LENGTH		APPL INSTRUCTION	
3.50-4.00 [.138-.157 IN]		408-8322	

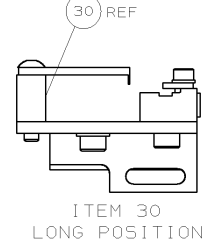
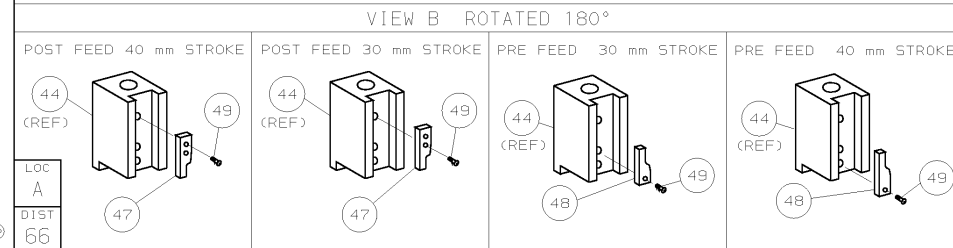
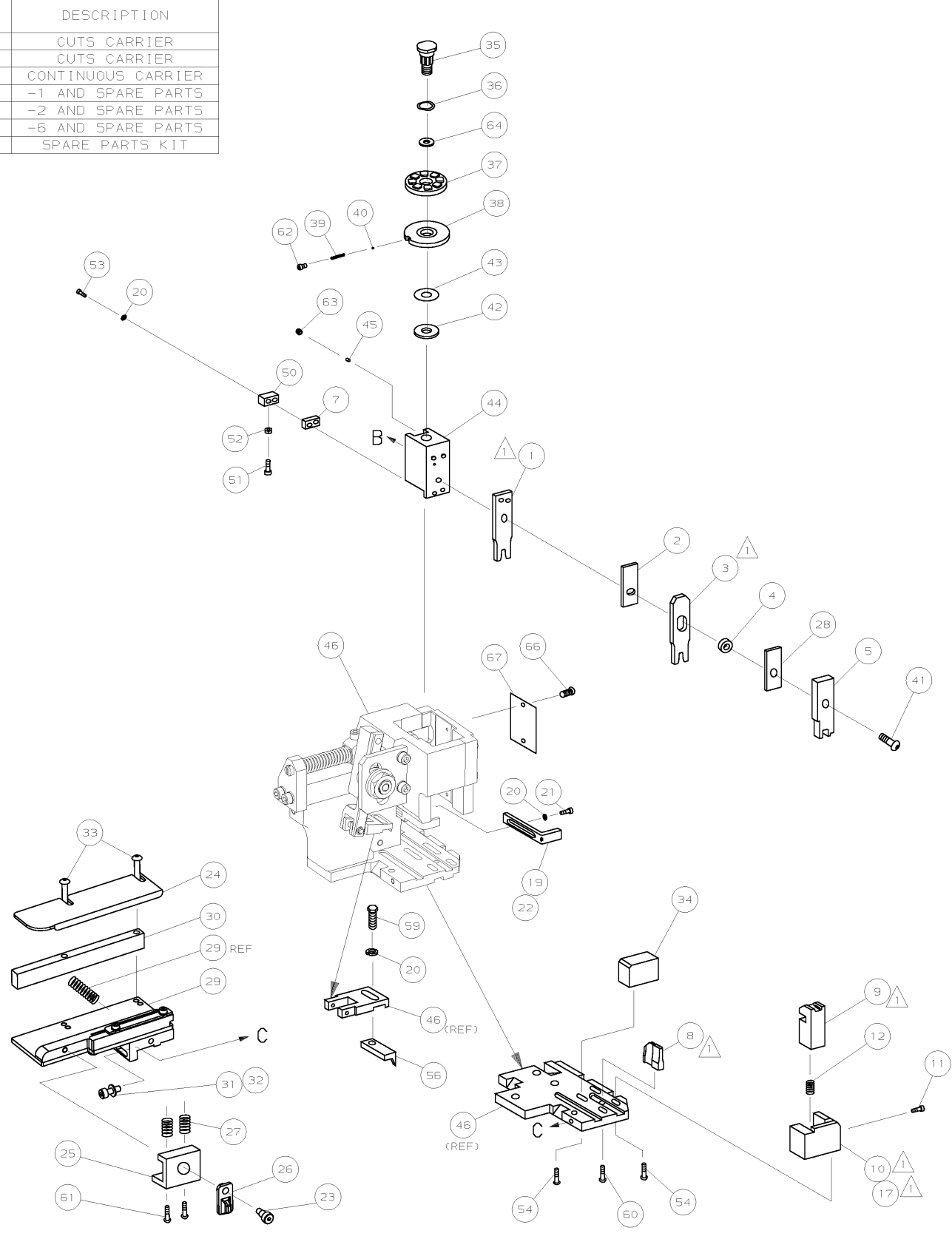
TERMINAL	FEED
APPL SPEC 114-5182	12.00 [.472 IN]

TERMINALS APPLIED				
TAB	RECEIPT	-	-	-
179322	179317	-	-	-
-	-	-	-	-
-	-	-	-	-
-	-	-	-	-
-	-	-	-	-
-	-	-	-	-
-	-	-	-	-
-	-	-	-	-
-	-	-	-	-

WIRE SIZE mm ² AWG	CRIMP HEIGHT	PIN PN AND LENGTH [IN]
0.5mm ² OR 20 AWG	1.20 ±0.05 [.047 ±.002 IN]	2-354779-6 [.3120]
0.3mm ² OR 22 AWG	1.11 ±0.05 [.044 ±.002 IN]	3-354779-1 [.3145]
0.2mm ² OR 24 AWG	1.04 ±0.05 [.041 ±.002 IN]	3-354779-7 [.3175]

RECOMMENDED SPARE PARTS.

- GREASE RAM, CAM, CAM FOLLOWER AND FEED ROD LIGHTLY.
- LUBRICATE DAILY PER THE APPLICATOR INSTRUCTION SHEET SUPPLIED WITH THE APPLICATOR.



QTY	REQD	PER	ASSY	PART NO	DESCRIPTION	ITEM NO		
-	1	1	1	1	1	1426365	PRINT, APPLICATOR LOG SHEET	73
-	1	1	1	1	1	1338705-1	DOCUMENTATION PACKAGE	72
-	-	-	-	-	-	-	-	71
-	-	-	-	-	-	-	-	70
-	-	-	-	-	-	-	-	69
-	-	-	-	-	-	-	-	68
-	1	1	1	1	1	461264-1	PLATE, IDENTIFICATION	67
-	2	2	2	2	2	21017-2	SCR,DRIVE (#2x.19) ID PLATE	66
-	-	-	-	-	-	-	-	65
-	1	1	1	1	1	986950-1	WASHER, FLAT PRECISION	64
-	1	1	1	1	1	3-18031-0	SCR,SKT SET (M6X6) RAM	63
-	1	1	1	1	1	18023-9	SCR,SHC (M4X6) INS DISC	62
-	2	2	2	2	2	1-18024-5	SCR,BHC (M5X25) DRAG	61
-	1	1	1	1	1	18024-7	SCR,BHC (M4X10) ANVIL	60
-	1	1	1	1	1	5-18022-2	SCR,HEX (M4X8) FEED FINGER	59
-	-	-	-	-	-	-	-	58
-	-	-	-	-	-	-	-	57
-	1	1	1	1	1	1338685-1	PAWL, FEED	56
-	-	-	-	-	-	-	-	55
-	4	4	4	4	4	18024-8	SCR,BHC (M4X12) SHEAR HOLDER	54
-	2	2	2	2	2	1-18023-3	SCR,SHC (M4X16) TERM HLD DWN	53
-	1	1	1	1	1	18030-1	NUT,HEX (M3)HOLD DOWN	52
-	1	1	1	1	1	811242-5	BUMPER, HOLDDOWN	51
-	1	1	1	1	1	690753-2	SPACER, TONKER	50
-	1	1	1	1	1	18024-3	SCR,BHC (M3X10) CAM	49
-	-	-	-	-	-	-	-	48
-	1	-	1	-	-	1338675-1	CAM, PRE FEED 30 & 40 mm ST	48
-	1	-	1	-	-	1338676-1	CAM, POST FEED 30 & 40 mm ST	47
-	1	1	1	1	1	1320999-3	APPLICATOR BASIC SUBASSY	46
-	1	1	1	1	1	690191-1	PLUG, NYLON	45
-	1	1	1	1	1	1338660-1	RAM	44
-	1	1	1	1	1	690125-1	WASHER, LAMINATED	43
-	1	1	1	1	1	690124-1	WASHER, RAM	42
-	1	1	1	1	1	2-18024-6	SCR,BHC (M8X25) RAM	41
-	1	1	1	1	1	23241-1	BALL, STEEL	40
-	1	1	1	1	1	2-22278-7	SPRING, COMPRESSION	39
-	1	1	1	1	1	1320922-1	DISC, INSULATION	38
-	1	1	1	1	1	354777-1	WIRE DISC, PLASTIC	37
-	1	1	1	1	1	22480-5	WASHER, SPRING	36
-	1	1	1	1	1	690212-1	POST, RAM	35
-	1	1	1	1	1	1320934-5	SUPPORT, TERMINAL	34
-	2	2	2	2	2	1-18024-0	SCR,BHC (M4X20) STRIP GUIDE	33
-	1	1	1	1	1	18027-2	WASHER, FLAT (M4)	32
-	1	1	1	1	1	1-18023-2	SCR,SKT CAP (M4X12) MOUNT BLOCK	31
-	1	1	1	1	1	1320908-3	SPACER, STRIP GUIDE	30
-	1	1	1	1	1	1633073-1	STRIP GUIDE PLATE ASSY	29
-	1	1	1	1	1	2-455888-1	SPACER, FRONT SHEAR DEP	28
-	2	2	2	2	2	1-22284-0	SPRING, DRAG	27
-	1	1	1	1	1	356835-1	LEVER, DRAG RELEASE	26
-	1	1	1	1	1	240792-1	DRAG, TERMINAL	25
-	1	1	1	1	1	1320928-2	PLATE, STRIP GUIDE	24
-	1	1	1	1	1	980371-4	SCR,SHC SHLD	23
-	1	-	1	-	-	690472-2	STRIPPER	22
-	1	1	1	1	1	1-18023-1	SCR,SHC (M4X10) STRIPPER	21
-	4	4	4	4	4	18025-2	WASHER,LOCK (M4) STRIPPER	20
-	-	1	-	-	-	690472-1	STRIPPER	19
-	-	-	-	-	-	-	-	18
-	1	-	-	1	-	1338684-1	HOLDER, SHEAR, FRONT (NO-CUT)	17
-	-	-	-	-	-	-	-	16
-	-	-	-	-	-	-	-	15
-	-	-	-	-	-	-	-	14
-	-	-	-	-	-	-	-	13
-	1	1	1	1	1	5-22280-0	SPRING, SHEAR	12
-	1	1	1	1	1	356885-4	STOP, SHEAR	11
-	-	1	1	-	1	1320921-1	HOLDER, SHEAR, FRONT (CUT)	10
-	1	1	1	1	1	454276-1	SHEAR, FLOAT (FRONT)	9
1	2	2	2	1	1	4-1333202-0	ANVIL	8
-	1	1	1	1	1	2-240641-4	SPACER, DEPRESSOR (REAR)	7
-	-	-	-	-	-	-	-	6
-	1	1	1	1	1	1-455889-4	DEPRESSOR, SHEAR (FRONT)	5
-	1	1	1	1	1	1-238011-7	SPACER, BLOCK CRIMPER	4
1	2	2	2	1	1	1-456134-0	CRIMPER, INSULATION	3
-	1	1	1	1	1	455888-4	SPACER, CRIMPER	2
1	2	2	2	1	1	1-456403-6	CRIMPER, WIRE	1

DIMENSIONS: mm [INCHES]		MATERIAL		FINISH	
DO NOT SCALE PRINT. TOLERANCES UNLESS OTHERWISE SPECIFIED:					
1. PLC DEC ±					
2. PLC DEC ±					
3. PLC DEC ±					
ANGLES ±					
SURF TEXTURE, REMOVE BURRS, BREAK SHARP EDGES RO.38 MAX					
SCALE: 1:1		DWG NO: 1426365		SHEET 1 OF 1	
CUSTOMER AND ASSEMBLY DRAWING					

THIS DRAWING IS A CONTROLLED DOCUMENT

LAYOUT L1426365 SET UP GAGE 458637-3

2002 RELEASED FOR PUBLICATION BY AMP INCORPORATED. ALL RIGHTS RESERVED. AMP 1756 REV 3-92

Mouser Electronics

Authorized Distributor

Click to View Pricing, Inventory, Delivery & Lifecycle Information:

[TE Connectivity:](#)

[1426365-6](#)