

4

3

2

1


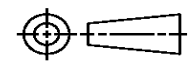
THIS DRAWING IS UNPUBLISHED. RELEASED FOR PUBLICATION
© COPYRIGHT ALL RIGHTS RESERVED.

LOC		DIST		REVISIONS			
P	LTR	DESCRIPTION		DATE	DWN	APVD	
	B1	ECR-15-007000		06MAY2015	GK	HMR	

REPLACED BY OCEAN STYLE APPLICATOR PART NUMBER 2266723-1

FOR REPLACEMENT PARTS FOR APPLICATOR 1426345
REFER TO ADDITIONAL PAGE(S). SPARE PARTS KIT (IF LISTED)
WILL REMAIN AVAILABLE.

THE REPLACEMENT OCEAN STYLE APPLICATOR HAS THE
SAME TERMINATOR/PRESS INTERFACE AS APPLICATOR
1426345

THIS DRAWING IS A CONTROLLED DOCUMENT.		DWN	GOPALAKRISHNA HV			TE Connectivity	
DIMENSIONS:		CHK	RAGHAVENDRA			NAME	
		TOLERANCES UNLESS OTHERWISE SPECIFIED:		APVD	RAGHAVENDRA		
		0 PLC ±	1 PLC ±	PRODUCT SPEC			
MATERIAL		2 PLC ±	3 PLC ±	APPLICATION SPEC			
FINISH		4 PLC ±	ANGLES ±	SIZE	CAGE CODE	DRAWING NO	RESTRICTED TO
				WEIGHT	A3	©- 1426345	
CUSTOMER DRAWING				SCALE	SHEET 1 OF 2	REV B1	

PART NUMBER	REV	FIRST USED	TERMINATOR	FEED TYPE	DESCRIPTION
1426345-1	B	-	LEADMAKER	MECH POST FEED	CUTS CARRIER
1426345-2	B	-	BENCH	MECH PRE FEED	CUTS CARRIER
1426345-6	B	-	LEADMAKER	MECH POST FEED	CONTINUOUS CARRIER
7-1426345-1	B	-	LEADMAKER	MECH POST FEED	-1 AND SPARE PARTS
7-1426345-2	B	-	BENCH	MECH PRE FEED	-2 AND SPARE PARTS
7-1426345-6	B	-	LEADMAKER	MECH POST FEED	-6 AND SPARE PARTS
7-1426345-7	A	-	-	-	SPARE PARTS KIT

CRIMP DATA AMP TERMINAL AMP CRIMP SPECS			
TERMINAL NAME: MICRO TIMER MK4 RECEPTACLE.			
CRIMP	SIZE	TYPE	RANGE
WIRE	2.03 [.080 IN]	F	0.5mm ² - 1.0mm ²
INSUL	2.79 [.110 IN]	0	2.00 MAX [.079 IN MAX]
WIRE STRIP LENGTH		APPL INSTRUCTION	
3.40-4.20 [.134-.165 IN]		408-8322	

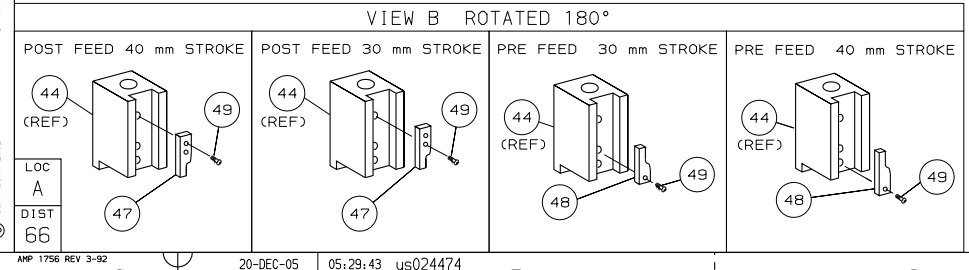
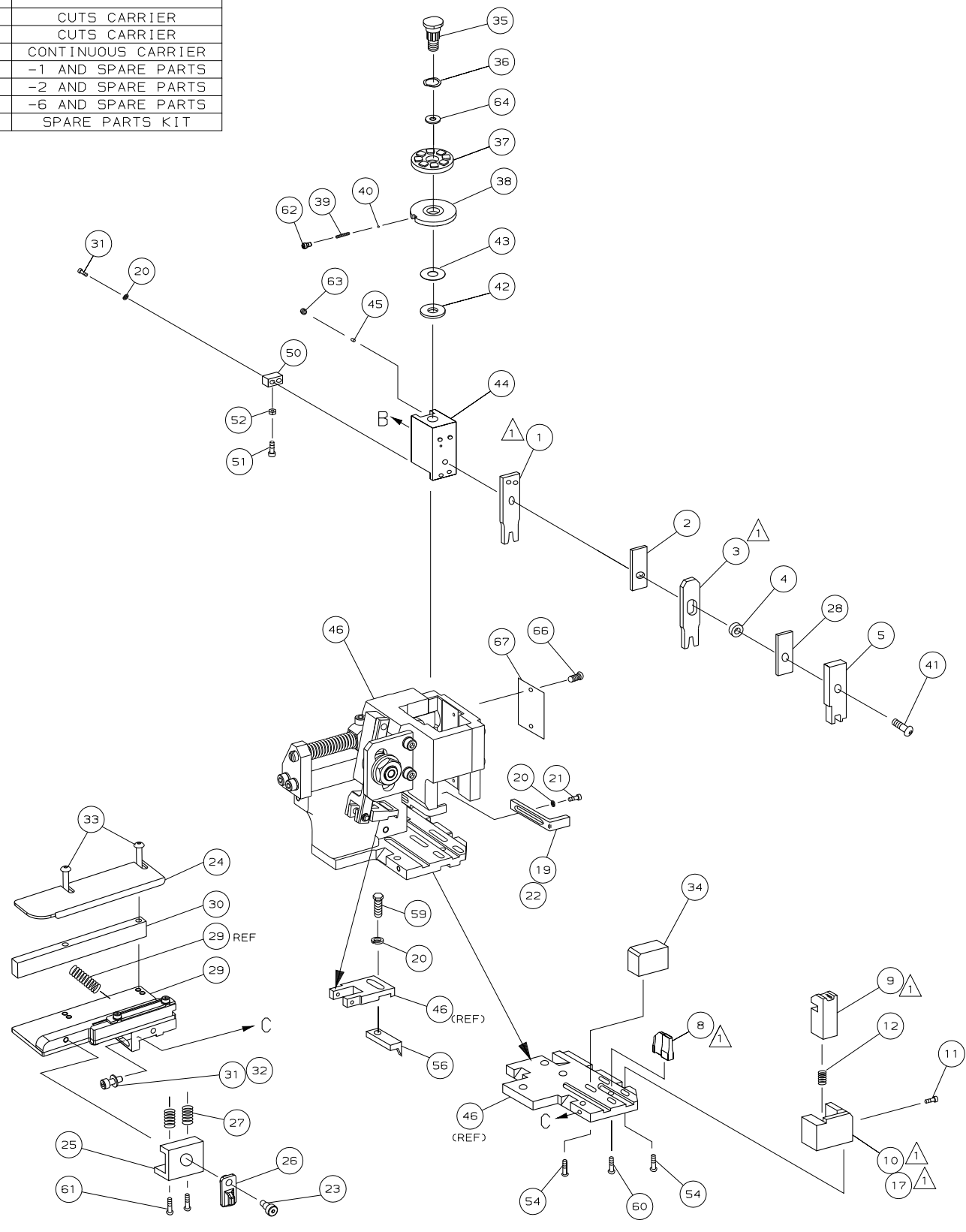
TERMINAL	FEED
APPL SPEC C-185158	12.00 [.472 IN]

TERMINALS APPLIED				
185158	-	-	-	-
-	-	-	-	-
-	-	-	-	-
-	-	-	-	-
-	-	-	-	-
-	-	-	-	-
-	-	-	-	-
-	-	-	-	-
-	-	-	-	-

WIRE SIZE mm ² AWG	CRIMP HEIGHT	PIN PN AND LENGTH [IN]
1.00mm ²	1.36 ±0.05 [.054 ±.002 IN]	1-354779-2 [.3050]
0.75mm ²	1.29 ±0.05 [.051 ±.002 IN]	1-354779-8 [.3080]
0.60mm ²	1.22 ±0.05 [.048 ±.002 IN]	2-354779-5 [.3115]
0.50mm ²	1.18 ±0.05 [.046 ±.002 IN]	3-354779-0 [.3140]

SET UP GAGE	LAYOUT
458637-3	L1426345

- 1. RECOMMENDED SPARE PARTS.
- 2. GREASE RAM, CAM, CAM FOLLOWER AND FEED ROD LIGHTLY.
- 3. LUBRICATE DAILY PER THE APPLICATOR INSTRUCTION SHEET SUPPLIED WITH THE APPLICATOR.
- 4. CUSTOMER DRG. RESTRICTED TO RENAULT.



QTY	REQD	PER	ASSY	PART NO	DESCRIPTION	ITEM NO		
-	1	1	1	1	1	1426345	PRINT, APPLICATOR LOG SHEET	73
-	1	1	1	1	1	1338705-1	DOCUMENTATION PACKAGE	72
-	-	-	-	-	-	-	-	71
-	-	-	-	-	-	-	-	70
-	-	-	-	-	-	-	-	69
-	-	-	-	-	-	-	-	68
-	1	1	1	1	1	461264-1	PLATE, IDENTIFICATION	67
-	2	2	2	2	2	21017-2	SCR, DRIVE (#2X.19) ID PLATE	66
-	-	-	-	-	-	-	-	65
-	1	1	1	1	1	986950-1	WASHER, FLAT PRECISION	64
-	1	1	1	1	1	3-18031-0	SCR, SKT SET (M6X6) RAM	63
-	1	1	1	1	1	18023-9	SCR, SHC (M4X6) INS DISC	62
-	2	2	2	2	2	1-18024-5	SCR, BHC (M5X25) DRAG	61
-	1	1	1	1	1	18024-7	SCR, BHC (M4X10) ANVIL	60
-	1	1	1	1	1	5-18022-2	SCR, HEX (M4X8) FEED FINGER	59
-	-	-	-	-	-	-	-	58
-	1	1	1	1	1	1338685-1	PAWL, FEED	57
-	-	-	-	-	-	-	-	56
-	4	4	4	4	4	18024-8	SCR, BHC (M4X12) SHEAR HOLDER	55
-	-	-	-	-	-	-	-	54
-	1	1	1	1	1	18030-1	NUT, HEX (M3) HOLD DOWN	53
-	1	1	1	1	1	811242-5	BUMPER, HOLDDOWN	52
-	1	1	1	1	1	690753-2	SPACER, TONKER	51
-	1	1	1	1	1	18024-3	SCR, BHC (M3X10) CAM	49
-	-	-	-	-	-	-	-	48
-	1	1	1	1	1	1338675-1	CAM, PRE FEED 30 & 40 mm ST	48
-	1	1	1	1	1	1338676-1	CAM, POST FEED 30 & 40 mm ST	47
-	1	1	1	1	1	1320999-3	APPLICATOR BASIC SUBASSY	46
-	1	1	1	1	1	690191-1	PLUG, NYLON	45
-	1	1	1	1	1	1338660-1	RAM	44
-	1	1	1	1	1	690125-1	WASHER, LAMINATED	43
-	1	1	1	1	1	690124-1	WASHER, RAM	42
-	1	1	1	1	1	2-18024-6	SCR, BHC (M8X25) RAM	41
-	1	1	1	1	1	23241-1	BALL, STEEL	40
-	1	1	1	1	1	2-22278-7	SPRING, COMPRESSION	39
-	1	1	1	1	1	1320922-1	DISC, INSULATION	38
-	1	1	1	1	1	354777-1	WIRE DISC, PLASTIC	37
-	1	1	1	1	1	22480-5	WASHER, SPRING	36
-	1	1	1	1	1	690212-1	POST, RAM	35
-	1	1	1	1	1	1-1320934-6	SUPPORT, TERMINAL	34
-	2	2	2	2	2	1-18024-0	SCR, BHC (M4X20) STRIP GUIDE	33
-	1	1	1	1	1	18027-2	WASHER, FLAT (M4)	32
-	3	3	3	3	3	1-18023-2	SCR, SKT CAP (M4X12) MOUNT BLOCK	31
-	1	1	1	1	1	1320908-1	SPACER, STRIP GUIDE	30
-	1	1	1	1	1	1633073-2	STRIP GUIDE PLATE ASSY	29
-	1	1	1	1	1	2-455888-1	SPACER, FRONT SHEAR DEP	28
-	2	2	2	2	2	1-22284-0	SPRING, DRAG	27
-	1	1	1	1	1	356835-1	LEVER, DRAG RELEASE	26
-	1	1	1	1	1	240792-1	DRAG, TERMINAL	25
-	1	1	1	1	1	1320928-1	PLATE, STRIP GUIDE	24
-	1	1	1	1	1	980371-4	SCR, SHC SHLD	23
-	1	1	1	1	1	690472-2	STRIPPER	22
-	1	1	1	1	1	1-18023-1	SCR, SHC (M4X10) STRIPPER	21
-	4	4	4	4	4	18025-2	WASHER, LOCK (M4) STRIPPER	20
-	-	-	-	-	-	-	-	19
-	-	-	-	-	-	-	-	18
-	1	-	-	-	-	1338684-1	HOLDER, SHEAR, FRONT (NO-CUT)	17
-	-	-	-	-	-	-	-	16
-	-	-	-	-	-	-	-	15
-	-	-	-	-	-	-	-	14
-	-	-	-	-	-	-	-	13
-	1	1	1	1	1	5-22280-0	SPRING, SHEAR	12
-	1	1	1	1	1	356885-4	STOP, SHEAR	11
-	-	-	-	-	-	-	-	10
-	1	1	1	1	1	1320921-1	HOLDER, SHEAR, FRONT (CUT)	10
-	1	1	1	1	1	1-454276-9	SHEAR, FLOAT (FRONT)	9
-	1	2	2	2	2	5-1333204-4	ANVIL	8
-	-	-	-	-	-	-	-	7
-	-	-	-	-	-	-	-	6
-	1	1	1	1	1	1-455889-4	DEPRESSOR, SHEAR (FRONT)	5
-	1	1	1	1	1	238011-4	SPACER, BLOCK CRIMPER	4
-	1	2	2	2	2	9-456135-3	CRIMPER, INSULATION	3
-	1	1	1	1	1	455888-4	SPACER, CRIMPER	2
-	1	2	2	2	2	1-456405-5	CRIMPER, WIRE	1

QTY	REQD	PER	ASSY	PART NO	DESCRIPTION	ITEM NO	
-77	-76	-72	-71	-6	-2	-1	REVISION OF EACH ASSY NO (WHEN BLANK, USE DWG REVISION)

DIMENSIONS, mm [INCHES]		MATERIAL		FINISH	
DO NOT SCALE PRINT.	DO NOT SCALE PRINT.	DR L.LOFTHOUSE	APP 25JUN02	HT TR	FIN
TOLERANCES UNLESS OTHERWISE SPECIFIED.	TOLERANCES UNLESS OTHERWISE SPECIFIED.	CHK -	F.BACKHURST		
1 PLC DEC ±	1 PLC DEC ±	REL 23JUL02	L.LOFTHOUSE		
2 PLC DEC ±	2 PLC DEC ±				
3 PLC DEC ±	3 PLC DEC ±				
ANGLES ±	ANGLES ±	AMP AMP Incorporated Harrisburg, PA 17105-3608			
SURF TEXTURE.	SURF TEXTURE.	NAME SIDE FEED HD-I APPLICATOR MACHINE REF HD-I APPL			
REMOVE BURRS.	REMOVE BURRS.	SCALE -	DWG NO 1426345	SHEET 1 of 1	REV B
SHARP EDGES RO.3B MAX	SHARP EDGES RO.3B MAX	CUSTOMER AND ASSEMBLY DRAWING			

Mouser Electronics

Authorized Distributor

Click to View Pricing, Inventory, Delivery & Lifecycle Information:

[TE Connectivity:](#)

[1426345-6](#)