

4

3

2

1


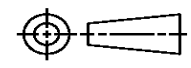
THIS DRAWING IS UNPUBLISHED. RELEASED FOR PUBLICATION
© COPYRIGHT ALL RIGHTS RESERVED.

LOC		DIST		REVISIONS			
P	LTR	DESCRIPTION		DATE	DWN	APVD	
	D1	ECR-14-002338		18FEB2014	GK	HMR	

REPLACED BY OCEAN STYLE APPLICATOR PART NUMBER 2151379-1

FOR REPLACEMENT PARTS FOR APPLICATOR 1426197 REFER TO ADDITIONAL PAGE(S). SPARE PARTS KIT (IF LISTED) WILL REMAIN AVAILABLE.

THE REPLACEMENT OCEAN STYLE APPLICATOR HAS THE SAME TERMINATOR/PRESS INTERFACE AS APPLICATOR 1426197

THIS DRAWING IS A CONTROLLED DOCUMENT.		DWN	GOPALAKRISHNA HV			TE Connectivity			
DIMENSIONS:		CHK	RAGHAVENDRA			NAME			
		TOLERANCES UNLESS OTHERWISE SPECIFIED:		APVD	SIDE FEED HD-I APPLICATOR				
		0 PLC ±	1 PLC ±	RAGHAVENDRA		PRODUCT SPEC			
MATERIAL		2 PLC ±	3 PLC ±	APPLICATION SPEC		SIZE	CAGE CODE	DRAWING NO	RESTRICTED TO
FINISH		4 PLC ±	ANGLES ±	WEIGHT		A3		©- 1426197	
				CUSTOMER DRAWING		SCALE	SHEET 1 OF 2	REV D1	

PART NUMBER	REV	FIRST USED	TERMINATOR	FEED TYPE	DESCRIPTION
1426197-1	D	-	LEADMAKER	MECH POST FEED	CUTS CARRIER
1426197-2	D	-	BENCH	MECH PRE FEED	CUTS CARRIER
1426197-6	D	-	LEADMAKER	MECH POST FEED	CONTINUOUS CARRIER
7-1426197-1	D	-	LEADMAKER	MECH POST FEED	-1 AND SPARE PARTS
7-1426197-2	D	-	BENCH	MECH PRE FEED	-2 AND SPARE PARTS
7-1426197-6	D	-	LEADMAKER	MECH POST FEED	-6 AND SPARE PARTS
7-1426197-7	A	-	-	-	SPARE PARTS KIT

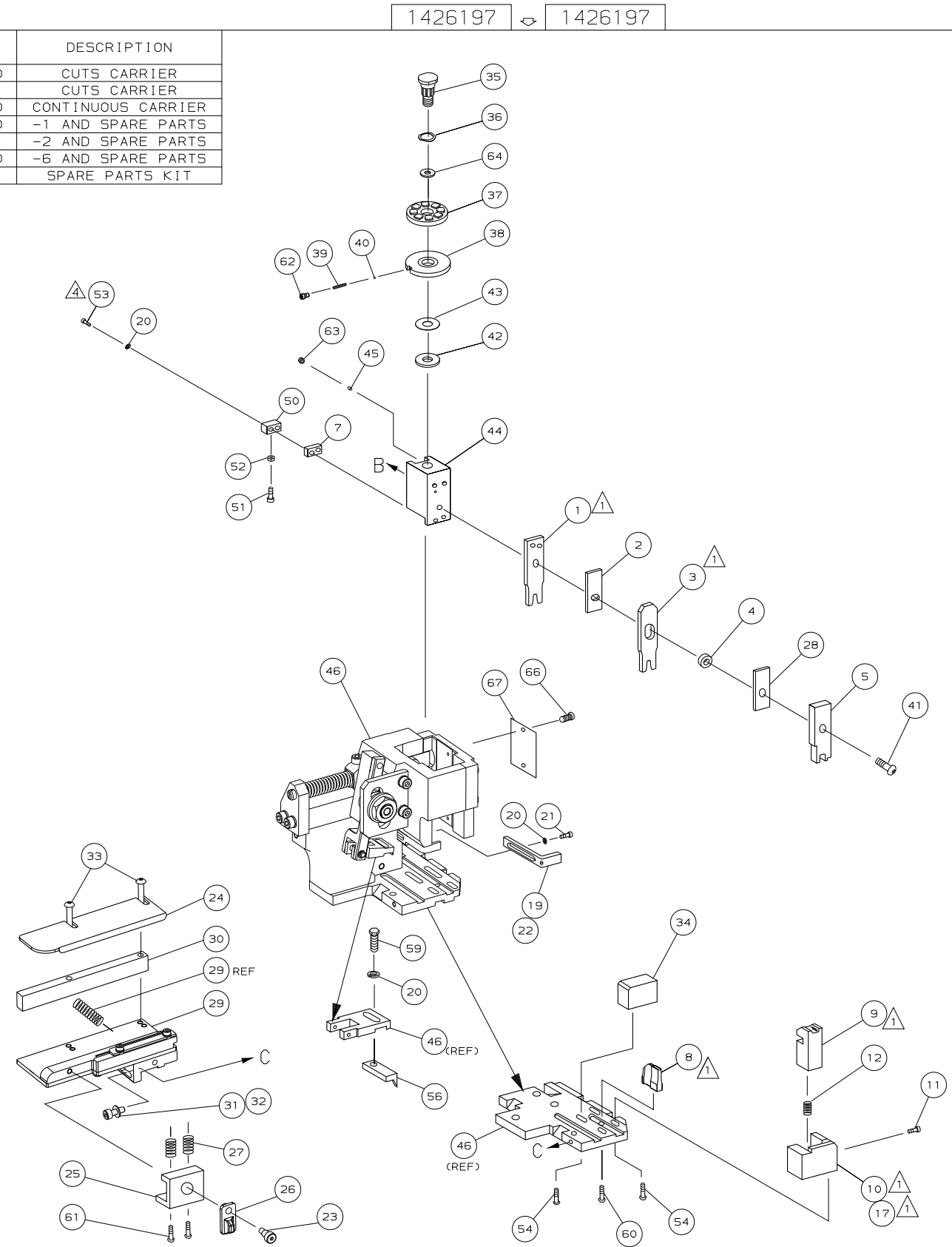
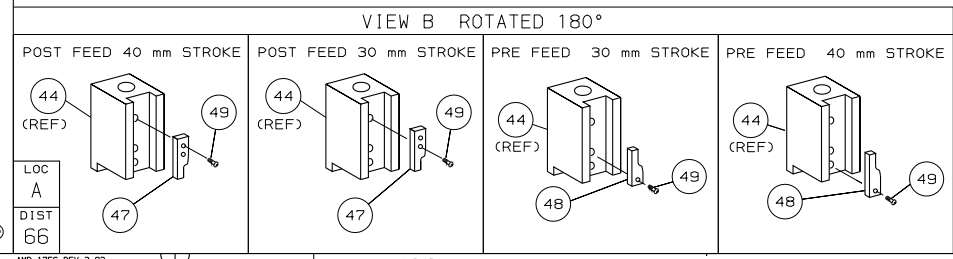
CRIMP DATA AMP TERMINAL AMP CRIMP SPECS			
TERMINAL NAME: 2.8 FASTIN-FASTON TAB			
CRIMP	SIZE	TYPE	RANGE
WIRE	2.03 [.080 IN]	F	0.5mm ² - 1.0mm ²
INSUL	2.79 [.110 IN]	0V	1.40-2.30 [.055-.090 IN]
WIRE STRIP LENGTH	APPL INSTRUCTION		
4.00-4.60 [.157-.181 IN]	408-8322		
TERMINAL	-	-	FEED
APPL SPEC	114-18014	-	13.49 [.531 IN]

TERMINALS APPLIED				
928930	-	-	-	-
-	-	-	-	-
-	-	-	-	-
-	-	-	-	-
-	-	-	-	-
-	-	-	-	-
-	-	-	-	-
-	-	-	-	-
-	-	-	-	-
-	-	-	-	-

WIRE SIZE	CRIMP HEIGHT	PIN PN AND LENGTH [IN]
1.00mm ²	1.56 ±0.05 [.061 ±.002 IN]	9-354778-9 [.2990]
0.75mm ²	1.47 ±0.05 [.058 ±.002 IN]	354779-7 [.3025]
0.50mm ²	1.38 ±0.05 [.054 ±.002 IN]	1-354779-5 [.3065]

WIRE SIZE	CRIMP HEIGHT	PIN PN AND LENGTH [IN]
1.00mm ²	1.56 ±0.05 [.061 ±.002 IN]	9-354778-9 [.2990]
0.75mm ²	1.47 ±0.05 [.058 ±.002 IN]	354779-7 [.3025]
0.50mm ²	1.38 ±0.05 [.054 ±.002 IN]	1-354779-5 [.3065]

- 1 RECOMMENDED SPARE PARTS.
- 2. GREASE RAM, CAM, CAM FOLLOWER AND FEED ROD LIGHTLY.
- 3. LUBRICATE DAILY PER THE APPLICATOR INSTRUCTION SHEET SUPPLIED WITH THE APPLICATOR.
- 4 CUT TO LENGTH AT ASSY.



QTY	REQD	PER	ASSY	PART NO	DESCRIPTION	ITEM NO	
-	1	1	1	1	1426197	PRINT, APPLICATOR LOG SHEET	73
-	1	1	1	1	1338705-1	DOCUMENTATION PACKAGE	71
-	1	1	1	1			70
-	1	1	1	1			69
-	1	1	1	1			68
-	1	1	1	1	461264-1	PLATE, IDENTIFICATION	67
-	2	2	2	2	21017-2	SCR,DRIVE (#2x.19) ID PLATE	66
-	1	1	1	1			65
-	1	1	1	1	986950-1	WASHER, FLAT PRECISION	64
-	1	1	1	1	3-18031-0	SCR,SKT SET (M6X6) RAM	63
-	1	1	1	1	18023-9	SCR,SHC (M4X6) INS DISC	62
-	2	2	2	2	2-18032-5	SCR,SET (M5X20) DRAG	61
-	1	1	1	1	18024-7	SCR,BHC (M4X10) ANVIL	60
-	1	1	1	1	5-18022-2	SCR,HEX (M4X8) FEED FINGER	59
-	1	1	1	1			58
-	1	1	1	1	1338685-1	PAWL, FEED	56
-	1	1	1	1			55
-	4	4	4	4	18024-8	SCR,BHC (M4X12) SHEAR HOLDER	54
-	2	2	2	2	1-18023-4	SCR,SHC (M4X20) TERM HLD DWN	53
-	1	1	1	1	18030-1	NUT,HEX (M3) HOLD DOWN	52
-	1	1	1	1	811242-5	BUMPER, HOLDDOWN	51
-	1	1	1	1	690753-2	SPACER, TONKER	50
-	1	1	1	1	18024-3	SCR,BHC (M3X10) CAM	49
-	1	1	1	1	1338675-1	CAM, PRE FEED 30 & 40 mm ST	48
-	1	1	1	1	1338676-1	CAM, POST FEED 30 & 40 mm ST	47
-	1	1	1	1	1320999-3	APPLICATOR BASIC SUBASSY	46
-	1	1	1	1	690191-1	PLUG, NYLON	45
-	1	1	1	1	1338660-1	RAM	44
-	1	1	1	1	690125-1	WASHER, LAMINATED	43
-	1	1	1	1	690124-1	WASHER, RAM	42
-	1	1	1	1	2-18024-6	SCR,BHC (MBX25) RAM	41
-	1	1	1	1	23241-1	BALL, STEEL	40
-	1	1	1	1	2-22278-7	SPRING, COMPRESSION	39
-	1	1	1	1	1320922-1	DISC, INSULATION	38
-	1	1	1	1	354777-1	WIRE DISC, PLASTIC	37
-	1	1	1	1	22480-5	WASHER, SPRING	36
-	1	1	1	1	690212-1	POST, RAM	35
-	1	1	1	1	1320934-2	SUPPORT, TERMINAL	34
-	2	2	2	2	1-18024-0	SCR,BHC (M4X20) STRIP GUIDE	33
-	1	1	1	1	18027-2	WASHER, FLAT (M4)	32
-	1	1	1	1	1-18023-2	SCR,SKT CAP (M4X12) MOUNT BLOCK	31
-	1	1	1	1	1320908-1	SPACER, STRIP GUIDE	30
-	1	1	1	1	1633073-1	STRIP GUIDE PLATE ASSY	29
-	1	1	1	1	1-455888-5	SPACER, FRONT SHEAR DEP	28
-	2	2	2	2	1-22284-0	SPRING, DRAG	27
-	1	1	1	1	356835-1	LEVER, DRAG RELEASE	26
-	1	1	1	1	240792-1	DRAG, TERMINAL	25
-	1	1	1	1	1320928-1	PLATE, STRIP GUIDE	24
-	1	1	1	1	980371-4	SCR,SHC SHLD	23
-	1	1	1	1	690472-2	STRIPPER	22
-	1	1	1	1	1-18023-1	SCR,SHC (M4X10) STRIPPER	21
-	4	4	4	4	18025-2	WASHER, LOCK (M4) STRIPPER	20
-	1	1	1	1	690472-1	STRIPPER	19
-	1	1	1	1			18
-	1	1	1	1	1338684-1	HOLDER, SHEAR, FRONT (NO-CUT)	17
-	1	1	1	1			16
-	1	1	1	1			15
-	1	1	1	1			14
-	1	1	1	1			13
-	1	1	1	1	3-22280-3	SPRING, SHEAR	12
-	1	1	1	1	356885-4	STOP, SHEAR	11
-	1	1	1	1	1320921-1	HOLDER, SHEAR, FRONT (CUT)	10
-	1	1	1	1	1-454276-9	SHEAR, FLOAT (FRONT)	9
-	1	2	2	2	2-1333204-9	ANVIL	8
-	1	1	1	1	1-240641-0	SPACER, DEPRESSOR (REAR)	7
-	1	1	1	1			6
-	1	1	1	1	1-455889-4	DEPRESSOR, SHEAR (FRONT)	5
-	1	1	1	1	238011-8	SPACER, BLOCK CRIMPER	4
-	1	2	2	2	2-854830-7	CRIMPER, INSULATION	3
-	1	1	1	1	455888-7	SPACER, CRIMPER	2
-	1	2	2	2	1-456405-5	CRIMPER, WIRE	1
-77	-76	-72	-71	-6	-2	-1	

QTY REQD PER ASSY		PARTS LIST	
MATL	HT TR	FIN	
DO NOT SCALE PRINT.			
TOLERANCES UNLESS OTHERWISE SPECIFIED:			
1 PLC DEC ±0.5 (.02 IN)			
2 PLC DEC ±-			
3 PLC DEC ±-			
ANGLES ±-			
SURF TEXTURE, ✓			
REMOVE BURRS, BREAK SHARP EDGES RO.38 MAX			
DR	27APR01	APP	27APR01
L.L.OFTHOUSE	F.BACKHURST		
CHK	REL	24-05-01	M.CLIFFORD
NAME		SIDE FEED HD-I APPLICATOR	
SCALE	DWG NO	1426197	SHEET 1 OF 1
CAGE CODE		CUSTOMER AND ASSEMBLY DRAWING	
00779		RESTRICTED TO	

THIS DRAWING IS UNPUBLISHED. RELEASED FOR PUBLICATION BY AMP INCORPORATED. ALL RIGHTS RESERVED. LAYOUT L1426197 SET UP GAGE 458637-3

1426197 1426197

/nd/mbaum/medout

1426197

Mouser Electronics

Authorized Distributor

Click to View Pricing, Inventory, Delivery & Lifecycle Information:

[TE Connectivity:](#)

[1426197-6](#)