

4

3

2

1

THIS DRAWING IS UNPUBLISHED.

RELEASED FOR PUBLICATION

© COPYRIGHT

ALL RIGHTS RESERVED.

LOC

DIST


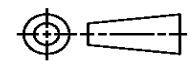
REVISIONS

P	LTR	DESCRIPTION	DATE	DWN	APVD

REPLACED BY OCEAN STYLE APPLICATOR PART NUMBER

FOR REPLACEMENT PARTS FOR APPLICATOR REFER TO ADDITIONAL PAGE(S). SPARE PARTS KIT (IF LISTED) WILL REMAIN AVAILABLE.

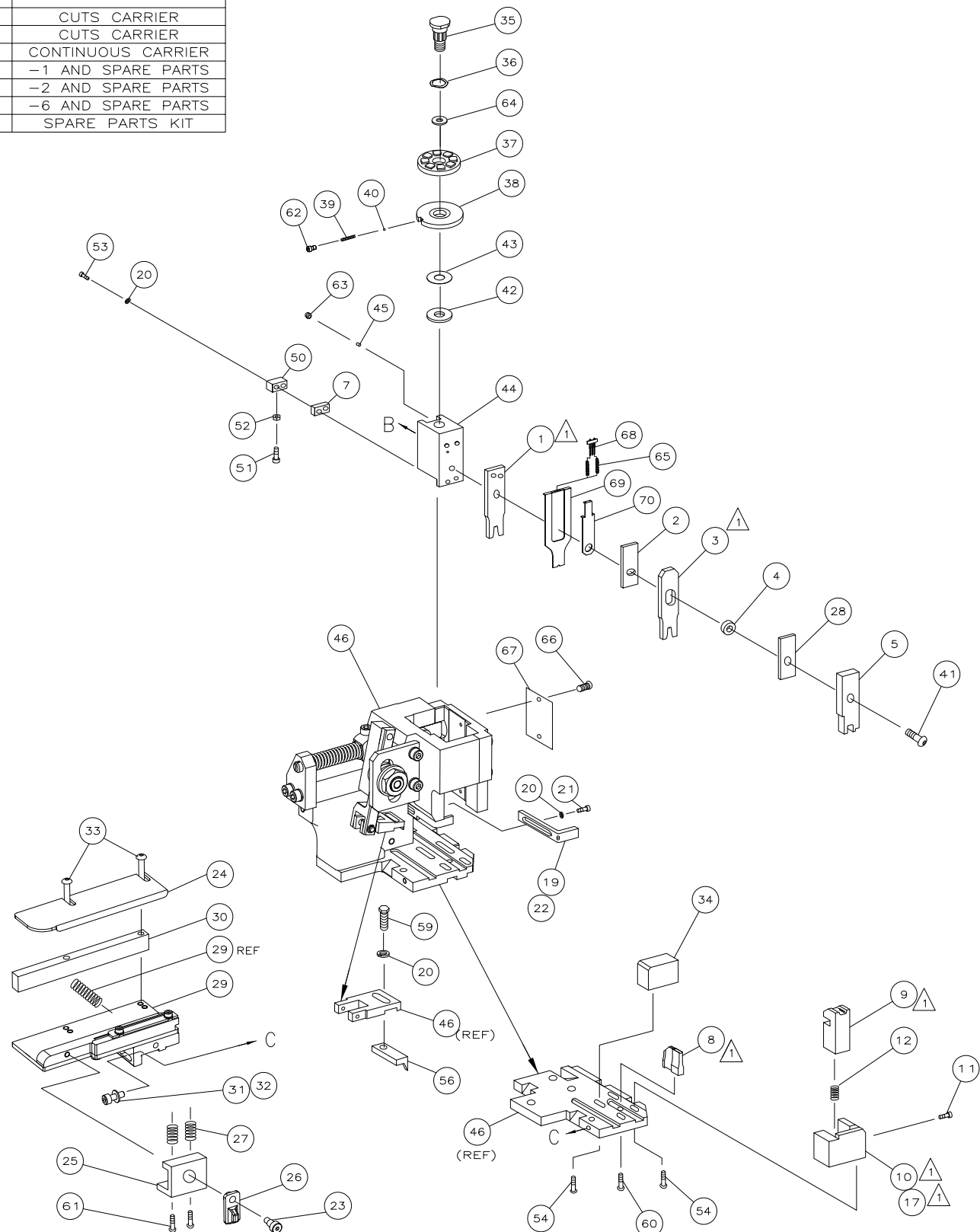
THE REPLACEMENT OCEAN STYLE APPLICATOR HAS THE SAME TERMINATOR/PRESS INTERFACE AS APPLICATOR

THIS DRAWING IS A CONTROLLED DOCUMENT.		DWN	 TE Connectivity		
DIMENSIONS:		CHK			
TOLERANCES UNLESS OTHERWISE SPECIFIED:		APVD	NAME		
 0 PLC ± 1 PLC ± 2 PLC ± 3 PLC ± 4 PLC ± ANGLES ±		PRODUCT SPEC	RESTRICTED TO		
		APPLICATION SPEC	SIZE	CAGE CODE	DRAWING NO
MATERIAL	FINISH	WEIGHT	A3	C-	
		SCALE	SHEET	OF	REV

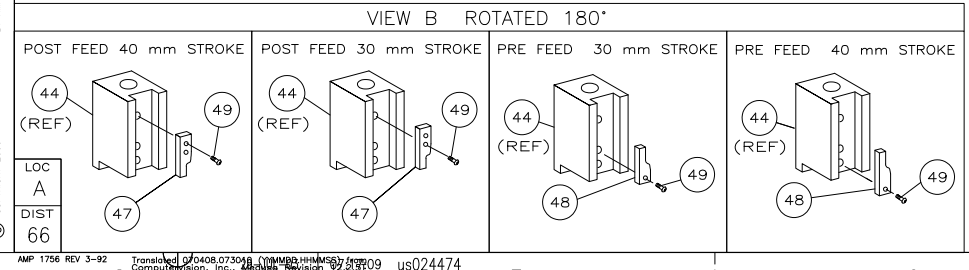
DRAWING MADE IN THIRD ANGLE PROJECTION

PART NUMBER	REV	FIRST USED	TERMINATOR	FEED TYPE	DESCRIPTION
1426175-1	G	-	LEADMAKER	MECH POST FEED	CUTS CARRIER
1426175-2	G	-	BENCH	MECH PRE FEED	CUTS CARRIER
1426175-6	G	-	LEADMAKER	MECH POST FEED	CONTINUOUS CARRIER
7-1426175-1	G	-	LEADMAKER	MECH POST FEED	-1 AND SPARE PARTS
7-1426175-2	G	-	BENCH	MECH PRE FEED	-2 AND SPARE PARTS
7-1426175-6	G	-	LEADMAKER	MECH POST FEED	-6 AND SPARE PARTS
7-1426175-7	A	-	-	-	SPARE PARTS KIT

CRIMP DATA AMP TERMINAL AMP CRIMP SPECS			
TERMINAL NAME: POSITIVE LOCK RECEPTACLE			
CRIMP	SIZE	TYPE	RANGE
WIRE	4.06 [.160 IN]	F	4.0mm ² - 6.0mm ²
INSUL	5.33 [.210 IN]	F	3.40-5.00 [.134-.197 IN]
WIRE STRIP LENGTH		APPL INSTRUCTION	
4.80-5.60 [.189-.220 IN]		408-8322	
TERMINAL	114-20036 (A)	-	FEED
APPL SPEC	114-20029 (B)	-	26.42 [1.040 IN]
TERMINALS APPLIED			
790319 A	-	-	-
281829 B	-	-	-
WIRE SIZE mm ² AWG			
CRIMP HEIGHT		PIN PN & LENGTH [IN]	
6.0mm ²	2.62 ±0.05 [.103 ±0.002 IN]	3-354778-5 [.2670]	
10 AWG	2.44 ±0.05 [.096 ±0.002 IN]	4-354778-9 [.2740]	
5.0mm ²	2.36 ±0.05 [.093 ±0.002 IN]	5-354778-7 [.2780]	
4.0mm ²	2.16 ±0.05 [.085 ±0.002 IN]	7-354778-2 [.2855]	



1. RECOMMENDED SPARE PARTS.
 2. GREASE RAM, CAM, CAM FOLLOWER AND FEED ROD LIGHTLY.
 3. LUBRICATE DAILY PER THE APPLICATOR INSTRUCTION SHEET SUPPLIED WITH THE APPLICATOR.



QTY	REVISION	DESCRIPTION	ITEM NO
1		1426175	PRINT, APPLICATOR LOG SHEET
1		1338705-1	DOCUMENTATION PACKAGE
1		1490524-2	SPACER, DEPRESSOR (WIRE DP)
1		1490525-2	WIRE DEPRESSOR
1		1424350-1	HOLDER, PIN, WIRED
1		461264-1	PLATE, IDENTIFICATION
2		21017-2	SCR_DRIVE(#2x.19)ID PLATE
2		1-23147-4	SPRING, COMPRESSION
1		986950-1	WASHER, FLAT PRECISION
1		3-18031-0	SCR,SKT_SET(M6X6)RAM
1		18023-9	SCR,SHC(M4X6)INS DISC
2		2-18032-5	SCR_SET(M5X20)DRAG
1		18024-7	SCR,BHC(M4X10)ANVIL
1		5-18022-2	SCR,HEX(M4X8)FEED FINGER
			58
			57
1		1333240-1	PAWL, FEED
			55
4		18024-8	SCR,BHC(M4X12)SHEAR HOLDER
2		9-18023-6	SCR,SHC(M4X14)TERM HLD DWN
1		18030-1	NUT,HEX(M3)HOLD_DOWN
1		811242-5	BUMPER, HOLDDOWN
1		690753-2	SPACER, TONKER
1		18024-3	SCR,BHC(M3X10)CAM
-		1338675-1	CAM, PRE FEED 30 & 40 mm ST
1		1338676-1	CAM, POST FEED 30 & 40 mm ST
1		1320999-3	APPLICATOR BASIC SUBASSY
1		690191-1	PLUG, NYLON
1		1633724-1	RAM
1		690125-1	WASHER, LAMINATED
1		690124-1	WASHER, RAM
1		2-18024-6	SCR,BHC(M8X25)RAM
1		23241-1	BALL, STEEL
1		2-22278-7	SPRING, COMPRESSION
1		1320922-1	DISC, INSULATION
1		354777-1	WIRE DISC, PLASTIC
1		22480-5	WASHER, SPRING
1		690212-1	POST, RAM
1		1-1320934-3	SUPPORT, TERMINAL
2		1-18024-0	SCR,BHC(M4X20)STRIP GUIDE
1		18027-2	WASHER, FLAT(M4)
1		1-18023-2	SCR,SKT_CAP(M4X12)MOUNT BLOCK
1		1-1320908-0	SPACER, STRIP GUIDE
1		1633073-7	STRIP GUIDE PLATE ASSY
1		1-455888-0	SPACER, FRONT SHEAR DEP
2		1-22284-0	SPRING, DRAG
1		356835-1	LEVER, DRAG RELEASE
1		240792-1	DRAG, TERMINAL
1		1320928-1	PLATE, STRIP GUIDE
1		980371-4	SCR,SHC SHLD
1		690472-2	STRIPPER
1		1-18023-1	SCR,SHC(M4X10)STRIPPER
4		18025-2	WASHER_LOCK(M4)STRIPPER
-		690472-1	STRIPPER
			18
			16
			15
			14
			13
1		3-22280-3	SPRING, SHEAR
1		356885-4	STOP, SHEAR
-		1320921-1	HOLDER, SHEAR, FRONT (CUT)
1		454276-1	SHEAR, FLOAT (FRONT)
1		1333211-1	ANVIL
1		4-240641-2	SPACER, DEPRESSOR (REAR)
			6
1		2-455889-4	DEPRESSOR, SHEAR (FRONT)
1		1-238011-0	SPACER, BLOCK CRIMPER
1		6-683453-5	CRIMPER, INSULATION
1		455888-3	SPACER, CRIMPER
1		456414-5	CRIMPER, WIRE

QTY REQD PER ASSY		PARTS LIST	
DIMENSIONS: mm [INCHES]		MATERIAL	
DO NOT SCALE PRINT.		HT TR FIN	
TOLERANCES UNLESS OTHERWISE SPECIFIED:		DR 13MAR01 APP 13MAR01	
1 PLC DEC ±0.5 [.02 IN]		F.BACKHURST	
2 PLC DEC ±-		REL 19JUN01	
3 PLC DEC ±-		L.LOFTHOUSE	
ANGLES ±-		AMP Incorporated	
SURF TEXTURE:		Harrisburg, PA 17105-3608	
REMOVE BURRS, BREAK SHARP EDGES R0.38 MAX		NAME SIDE FEED HD-1 APPLICATOR	
SCALE		MACHINE REF HD-1 APPL	
DWG NO 1426175		SHEET 1 of 1	
REV G		RESTRICTED TO	

THIS DRAWING IS A CONTROLLED DOCUMENT.

LAYOUT L1426175 SET UP GAGE 458637-3

THIS DRAWING IS UNPUBLISHED. RELEASE FOR PUBLICATION BY AMP INCORPORATED. ALL RIGHTS RESERVED. © COPYRIGHT 2000

Mouser Electronics

Authorized Distributor

Click to View Pricing, Inventory, Delivery & Lifecycle Information:

[TE Connectivity:](#)

[1426175-1](#)