

4

3

2

1


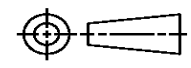
THIS DRAWING IS UNPUBLISHED. RELEASED FOR PUBLICATION
© COPYRIGHT ALL RIGHTS RESERVED.

LOC		DIST		REVISIONS			
P	LTR	DESCRIPTION		DATE	DWN	APVD	
	D2	ECR-13-017851		12DEC13	RS	LZ	

REPLACED BY OCEAN STYLE APPLICATOR PART NUMBER 2151630-1

FOR REPLACEMENT PARTS FOR APPLICATOR 1385625
REFER TO ADDITIONAL PAGE(S). SPARE PARTS KIT (IF LISTED)
WILL REMAIN AVAILABLE.

THE REPLACEMENT OCEAN STYLE APPLICATOR HAS THE
SAME TERMINATOR/PRESS INTERFACE AS APPLICATOR
1385625

THIS DRAWING IS A CONTROLLED DOCUMENT.		DWN	R.SHEN			
DIMENSIONS:		CHK	LJ.ZHANG			
		APVD	U.GUO		NAME	
TOLERANCES UNLESS OTHERWISE SPECIFIED:		PRODUCT SPEC		SIDE FEED HDM APPLICATOR		
0 PLC	±	APPLICATION SPEC		SIZE	CAGE CODE	DRAWING NO
1 PLC	±	MATERIAL		A3		©- 1385625
2 PLC	±	FINISH		RESTRICTED TO		
3 PLC	±			CUSTOMER ACCESSIBLE PRODUCTION DRAWING		
4 PLC	±			SCALE	SHEET 1 OF 3	REV D2
ANGLES	±					

Dimensioning and tolerancing per ASME Y14.5M-2009

THIS DRAWING IS UNPUBLISHED. RELEASED FOR PUBLICATION BY TYCO ELECTRONICS CORPORATION. ALL INTERNATIONAL RIGHTS RESERVED.

Table with columns: PART NUMBER, REV, FIRST USED, POWER UNIT, FEED TYPE, DESCRIPTION. Rows include 1385625-1 through 7-1385625-7.

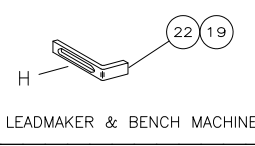
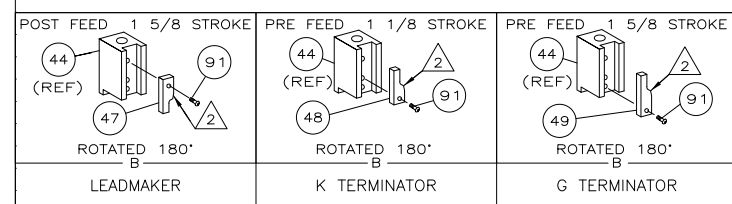
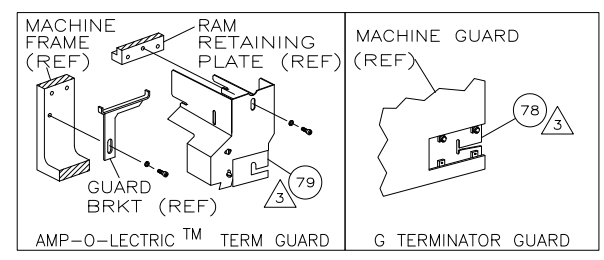
TERMINAL NAME: FEMALE TAXI TERM W/P 150. CRIMP DATA (NON-AMP TERMINAL-AMP SPEC). Includes columns for SEAL, TERMINAL, PAD LTR, CRIMP, WIRE, INSUL, WIRE STRIP LENGTH, TERM APPL, SPEC, FEED, APPL INSTRUCTION, SET UP GAGE, LAYOUT.

REVISIONS table with columns: P, LTR, DESCRIPTION, DATE, DWN, APVD. Row 1: D1, ECR-08-015892, 6-2008, MY, TE.

- 1 RECOMMENDED SPARE PARTS.
2 GREASE LIGHTLY.
3 GUARD MUST BE IN PLACE WHEN OPERATING APPLICATOR IN A BENCH MACHINE.
4 LUBRICATE DAILY USING NO. 20 MACHINE OIL.
5. ITEMS WITH QTY OF REF SPECIFIED (EXCEPT ITEMS 78 AND 79) ARE USED ON ITEM 46.
6 THIS APPLICATOR APPLIES TERMINAL WITH A SEAL
7 APPLY TORQ-SEAL IN ALLEN SOCKET TO FILL HOLE AFTER FLAT HD HAS BEEN ADJUSTED TO CORRECT HEIGHT AT QUALIFICATION. APPLY #1-23419-5 LOC-TITE TO THREADS.
8 CUT TO LENGTH AT ASSY

Main parts list table with columns: QTY, REF, PART NO, DESCRIPTION, ITEM NO. Includes items like 3-354779-2 PIN, WIRE DISC (.3150)B, 2-354779-0 PIN, WIRE DISC (.3090)A, etc.

Continuation of parts list table with columns: QTY, REF, PART NO, DESCRIPTION, ITEM NO. Includes items like 22594-8 NUT, HEX(1/2-20), 240628-1 PLATE, ADJUSTMENT, etc.



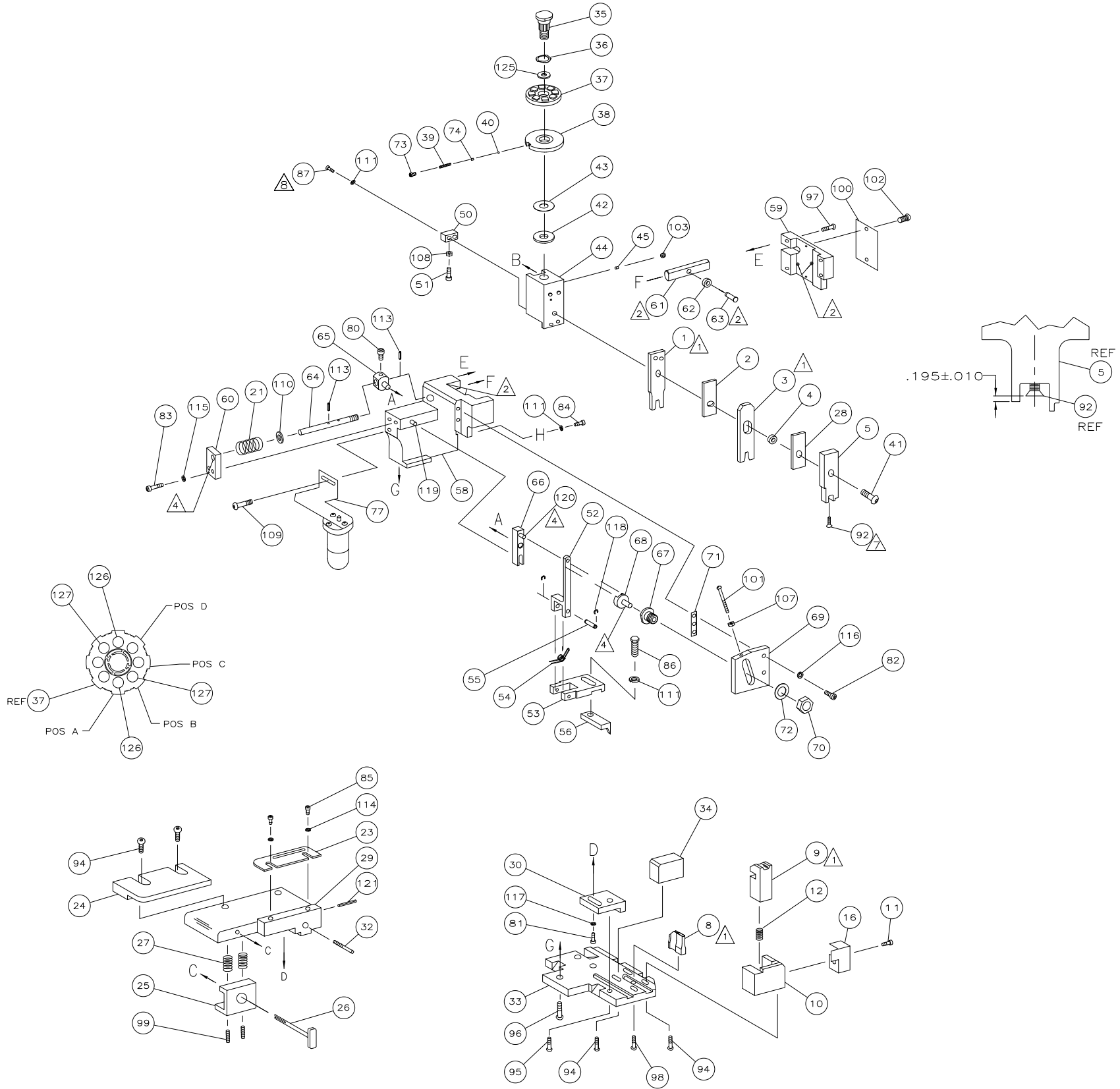
THIS DRAWING IS A CONTROLLED DOCUMENT. Includes fields for DIMENSIONS, TOLERANCES UNLESS OTHERWISE SPECIFIED, MATERIAL, FINISH, CUSTOMER DRAWING, SCALE, SHEET 1 OF 2, REV D1.

Dimensioning and tolerancing per ASME Y14.5M-2009

8 7 6 5 4 3 2 1

THIS DRAWING IS UNPUBLISHED. RELEASED FOR PUBLICATION
© COPYRIGHT BY TYCO ELECTRONICS CORPORATION. ALL INTERNATIONAL RIGHTS RESERVED.

LOC		DIST		REVISIONS			
NO	DATE	BY	CHK	DESCRIPTION	DATE	OWN	APVD
A	66	-	-	SEE SHEET 1	-	-	-



THIS DRAWING IS A CONTROLLED DOCUMENT.		DN: C.ERISMAN 19JUN03	Tyco Electronics Corporation Harrisburg, PA 17105-3608	
DIMENSIONS: INCHES		OK: C.ERISMAN 19JUN03	Tyco Electronics	
TOLERANCES UNLESS OTHERWISE SPECIFIED:		APVD: T.ELFIN 19JUN03	NAME: SIDE FEED HDM APPLICATOR	
0 PLC	± .005	PRODUCT SPEC: -		
1 PLC	± .002	APPLICATION SPEC: -		
2 PLC	± .001	SIZE: A1		
3 PLC	± .0005	CAGE CODE: 00779		
4 PLC	± .0002	DRAWING NO: 1385625		
ANGLES	± .0001	RESTRICTED TO: -		
MATERIAL: -	FINISH: -	WEIGHT: -		SCALE: -
CUSTOMER DRAWING		SHEET 2 OF 2		REV D1

4805 (1/08)
23JUN2008 1:50pm

Mouser Electronics

Authorized Distributor

Click to View Pricing, Inventory, Delivery & Lifecycle Information:

[TE Connectivity:](#)

[1385625-3](#)