

4

3

2

1

THIS DRAWING IS UNPUBLISHED.

RELEASED FOR PUBLICATION

© COPYRIGHT

ALL RIGHTS RESERVED.

LOC DIST


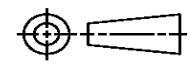
REVISIONS

P	LTR	DESCRIPTION	DATE	DWN	APVD

REPLACED BY OCEAN STYLE APPLICATOR PART NUMBER

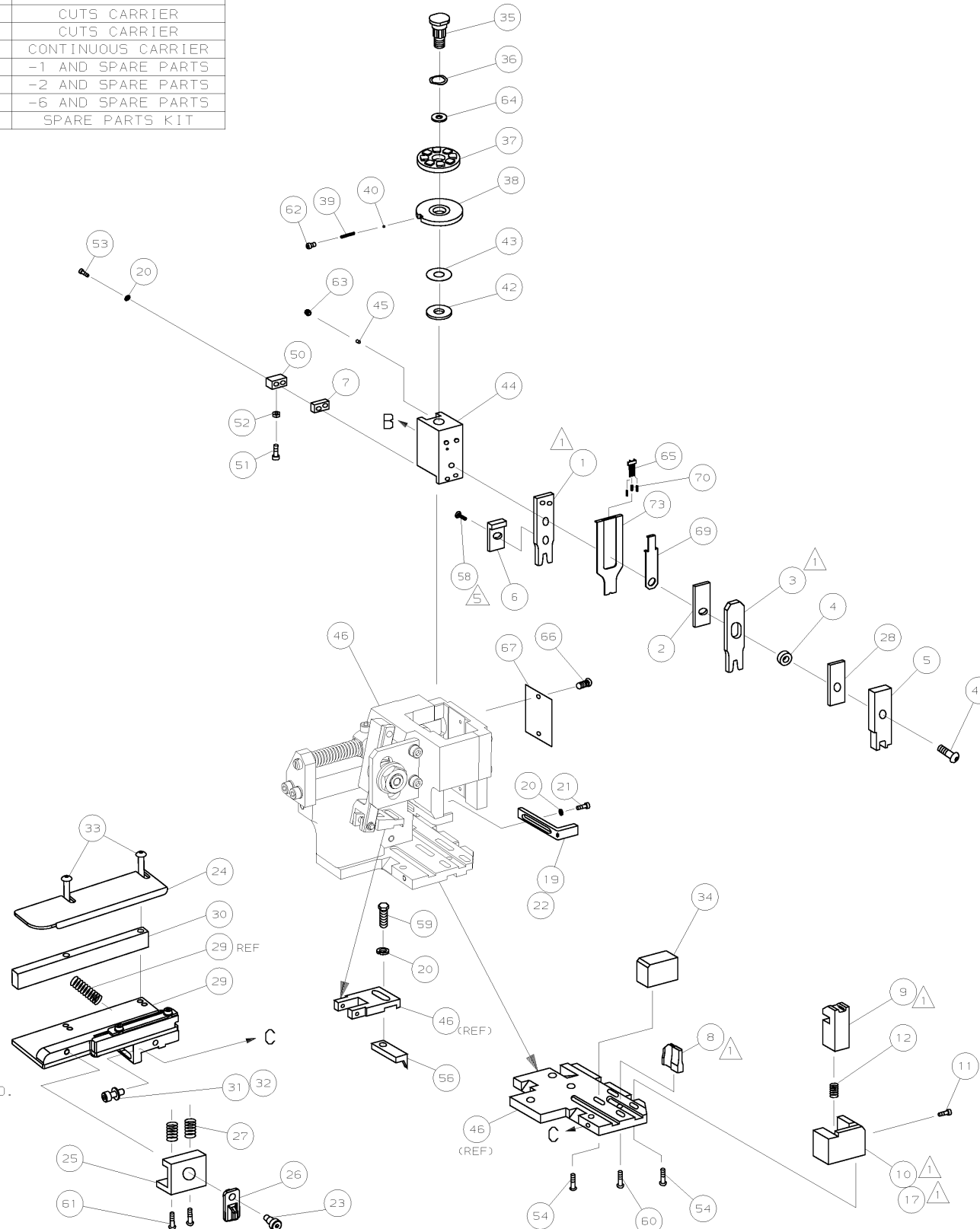
FOR REPLACEMENT PARTS FOR APPLICATOR REFER TO ADDITIONAL PAGE(S). SPARE PARTS KIT (IF LISTED) WILL REMAIN AVAILABLE.

THE REPLACEMENT OCEAN STYLE APPLICATOR HAS THE SAME TERMINATOR/PRESS INTERFACE AS APPLICATOR

THIS DRAWING IS A CONTROLLED DOCUMENT.		DWN	 TE Connectivity		
DIMENSIONS:		CHK			
TOLERANCES UNLESS OTHERWISE SPECIFIED:		APVD	NAME		
 <ul style="list-style-type: none"> 0 PLC ± 1 PLC ± 2 PLC ± 3 PLC ± 4 PLC ± ANGLES ± 		PRODUCT SPEC	RESTRICTED TO		
		APPLICATION SPEC	SIZE	CAGE CODE	DRAWING NO
MATERIAL	FINISH	WEIGHT	A3	C-	
		SCALE	SHEET	OF	REV

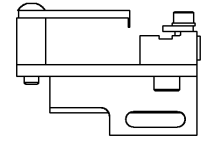
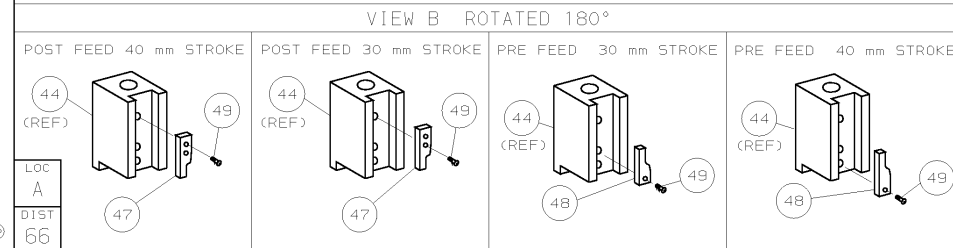
PART NUMBER	REV	FIRST USED	TERMINATOR	FEED TYPE	DESCRIPTION
1238072-1	B	-	LEADMAKER	MECH POST FEED	CUTS CARRIER
1238072-2	B	-	BENCH	MECH PRE FEED	CUTS CARRIER
1238072-6	B	-	LEADMAKER	MECH POST FEED	CONTINUOUS CARRIER
7-1238072-1	B	-	LEADMAKER	MECH POST FEED	-1 AND SPARE PARTS
7-1238072-2	B	-	BENCH	MECH PRE FEED	-2 AND SPARE PARTS
7-1238072-6	B	-	LEADMAKER	MECH POST FEED	-6 AND SPARE PARTS
7-1238072-7	A	-	-	-	SPARE PARTS KIT

CRIMP DATA		AMP TERMINAL	AMP CRIMP SPECS
TERMINAL NAME: .040 SERIES FEMALE RECEPTACLE.			
CRIMP	SIZE	TYPE	RANGE
WIRE	1.4 [.055 IN]	F	0.35mm ² (22AWG)
INSUL	1.57 [.062 IN]	F	1.2-1.65 [.047-.065 IN]
WIRE STRIP LENGTH		APPL INSTRUCTION	
4.80-5.60 [.189-.220 IN]		408-8322	
TERMINAL	FEED		
APPL SPEC 114-6063	11.51 [.453 IN]		
TERMINALS APPLIED			
638187-4	-	-	-
638009-6	-	-	-
638098-8	-	-	-
638099-8	-	-	-
WIRE SIZE	CRIMP HEIGHT	PIN PN AND LENGTH [IN]	
22 AWG	0.95 ±0.05 [.037 ±.002 IN]	5-354779-8 [.3280]	
0.35mm ²	0.94 ±0.05 [.037 ±.002 IN]	5-354779-8 [.3280]	



QTY	REQD	PER	ASSY	PART NO	DESCRIPTION	ITEM NO	
-	1	1	1	1	1490525-1	DEPRESSOR, WIRE	73
-	1	1	1	1	1426178	PRINT, APPLICATOR LOG SHEET	72
-	1	1	1	1	1338705-1	DOCUMENTATION PACKAGE	71
-	3	3	3	3	1-23147-4	SPRING, DEPRESSOR	70
-	1	1	1	1	1490524-2	SPACER, DEPRESSOR	69
-	1	1	1	1	461264-1	PLATE, IDENTIFICATION	67
-	2	2	2	2	21017-2	SCR,DRIVE (#2X.19) ID PLATE	66
-	1	1	1	1	1424350-1	HOLDER, PIN, WIRED	65
-	1	1	1	1	986950-1	WASHER, FLAT PRECISION	64
-	1	1	1	1	3-18031-0	SCR,SKT SET (M6X6) RAM	63
-	1	1	1	1	18023-9	SCR,SHC (M4X6) INS DISC	62
-	2	2	2	2	1-18024-5	SCR,BHC (M5X25) DRAG	61
-	1	1	1	1	18024-7	SCR,BHC (M4X10) ANVIL	60
-	1	1	1	1	5-18022-2	SCR,HEX (M4X8) FEED FINGER	59
-	1	1	1	1	985575-1	SCR,FHC (M3X6) DEPRESSOR	58
-	1	1	1	1	1338685-1	PAWL, FEED	56
-	4	4	4	4	18024-8	SCR,BHC (M4X12) SHEAR HOLDER	54
-	2	2	2	2	9-18023-6	SCR,SHC (M4X14) TERM HLD DWN	53
-	1	1	1	1	18030-1	NUT,HEX (M3)HOLD DOWN	52
-	1	1	1	1	811242-5	BUMPER, HOLDDOWN	51
-	1	1	1	1	690753-2	SPACER, TONKER	50
-	1	1	1	1	18024-3	SCR,BHC (M3X10) CAM	49
-	1	1	1	1	1338675-1	CAM, PRE FEED 30 & 40 mm ST	48
-	1	1	1	1	1338676-1	CAM, POST FEED 30 & 40 mm ST	47
-	1	1	1	1	1320999-3	APPLICATOR BASIC SUBASSY	46
-	1	1	1	1	690191-1	PLUG, NYLON	45
-	1	1	1	1	1338660-1	RAM	44
-	1	1	1	1	690125-1	WASHER, LAMINATED	43
-	1	1	1	1	690124-1	WASHER, RAM	42
-	1	1	1	1	2-18024-6	SCR,BHC (M8X25) RAM	41
-	1	1	1	1	23241-1	BALL, STEEL	40
-	1	1	1	1	2-22278-7	SPRING, COMPRESSION	39
-	1	1	1	1	1320922-1	DISC, INSULATION	38
-	1	1	1	1	354777-1	WIRE DISC, PLASTIC	37
-	1	1	1	1	22480-5	WASHER, SPRING	36
-	1	1	1	1	690212-1	POST, RAM	35
-	1	1	1	1	1320934-6	SUPPORT, TERMINAL	34
-	2	2	2	2	1-18024-0	SCR,BHC (M4X20) STRIP GUIDE	33
-	1	1	1	1	18027-2	WASHER, FLAT (M4)	32
-	1	1	1	1	1-18023-2	SCR,SKT CAP (M4X12) MOUNT BLOCK	31
-	1	1	1	1	1320908-4	SPACER, STRIP GUIDE	30
-	1	1	1	1	1633073-5	STRIP GUIDE PLATE ASSY	29
-	1	1	1	1	1-455888-0	SPACER, FRONT SHEAR DEP	28
-	2	2	2	2	1-22284-0	SPRING, DRAG	27
-	1	1	1	1	356835-1	LEVER, DRAG RELEASE	26
-	1	1	1	1	217233-1	DRAG, TERMINAL	25
-	1	1	1	1	1320928-1	PLATE, STRIP GUIDE	24
-	1	1	1	1	980371-4	SCR,SHC SHLD	23
-	1	1	1	1	690472-2	STRIPPER	22
-	1	1	1	1	1-18023-1	SCR,SHC (M4X10) STRIPPER	21
-	4	4	4	4	18025-2	WASHER,LOCK (M4) STRIPPER	20
-	1	1	1	1	690472-1	STRIPPER	19
-	1	1	1	1	1338684-1	HOLDER, SHEAR, FRONT (NO-CUT)	17
-	1	1	1	1	5-22280-0	SPRING, SHEAR	12
-	1	1	1	1	356885-4	STOP, SHEAR	11
-	1	1	1	1	1320921-1	HOLDER, SHEAR, FRONT (CUT)	10
-	1	1	1	1	217234-2	SHEAR, FLOAT (FRONT)	9
1	2	2	2	1	1338690-8	ANVIL	8
-	1	1	1	1	6-240641-4	SPACER, DEPRESSOR (REAR)	7
-	1	1	1	1	224405-3	DEPRESSOR, WIRE	6
-	1	1	1	1	1-455889-3	DEPRESSOR, SHEAR (FRONT)	5
-	1	1	1	1	1-238011-0	SPACER, BLOCK CRIMPER	4
1	2	2	2	1	5-904741-4	CRIMPER, INSULATION	3
-	1	1	1	1	455888-7	SPACER, CRIMPER	2
1	2	2	2	1	1-856313-4	CRIMPER, WIRE	1

- 1. RECOMMENDED SPARE PARTS.
- 2. GREASE RAM, CAM, CAM FOLLOWER AND FEED ROD LIGHTLY.
- 3. LUBRICATE DAILY PER THE APPLICATOR INSTRUCTION SHEET SUPPLIED WITH THE APPLICATOR.
- 4. WIRE RANGE QUOTED IS SPECIFIC TO TERMINAL DASH No.5 LISTED.
- 5. CUT TO LENGTH AT ASSY.



DIMENSIONS: mm [INCHES]		MATERIAL		HT TR		FIN	
DO NOT SCALE PRINT.							
TOLERANCES UNLESS OTHERWISE SPECIFIED:							
1 PLC DEC ±0.5 [.02 IN]							
2 PLC DEC ±-							
3 PLC DEC ±-							
ANGLES ±-							
SURF TEXTURE.							
REMOVE BURRS, BREAK SHARP EDGES RO.38 MAX							
DR C.ERISMAN		APP T.ELBI		CHK -		REL -	
NAME SIDE FEED HD-I APPLICATOR		MACHINE REF HD-I APPL		SCALE -		DWG NO 1238072	
REV B		REV B		SHEET 1 OF 1		REV B	

AMP Incorporated Harrisburg, PA 17105-3608

CASE CODE 00779 CUSTOMER AND ASSEMBLY DRAWING

THIS DRAWING IS A CONTROLLED DOCUMENT

LAYOUT L2668 SET UP GAGE 458637-3

2000 RELEASED FOR PUBLICATION BY AMP INCORPORATED. ALL RIGHTS RESERVED. THIS DRAWING IS UNBIDDEN. © COPYRIGHT 2000 AMP 1756 REV 3-92

1238072

D

C

B

A

Mouser Electronics

Authorized Distributor

Click to View Pricing, Inventory, Delivery & Lifecycle Information:

[TE Connectivity:](#)

[1238072-2](#)