

APPROVED BY/DATE  
C. Westerb 5-26-92

**SAFETY ORGANIZATION(S):**

THIS FILTER HAS BEEN FORMALLY RECOGNIZED, CERTIFIED OR APPROVED BY THE LISTED AGENCY. THEREFORE, ALL TEST/REQUIREMENTS SPECIFIED IN THE LATEST REVISION OF THE FOLLOWING AGENCY STANDARDS HAVE BEEN MET,

UL 1283  
CSA 22-2, NO. 0, 0, 4, 8  
VDE APPROVED (PENDING)

**OPERATING SPECIFICATIONS:**

LINE VOLTAGE/CURRENT:  
10 AMP., 120/250 VAC  
8 AMP./40°C, 250 VAC  
50-60Hz

**LINE FREQUENCY:**

MAX. LEAKAGE CURRENT, EACH LINE TO GROUND  
.25 mA @ 120V 60 Hz  
.48 mA @ 250V 50 Hz

**OPERATING AMBIENT TEMP. RANGE:**

-10°C TO +40°C @ RATED CURRENT, I<sub>r</sub>  
IN AN AMBIENT, T<sub>a</sub>, HIGHER THAN 40°C, THE MAXIMUM OPERATING CURRENT, I<sub>o</sub>, IS AS FOLLOWS:

$$I_o = I_r \sqrt{\frac{85 - T_a}{45}}$$

**RELIABILITY SPECIFICATIONS:**

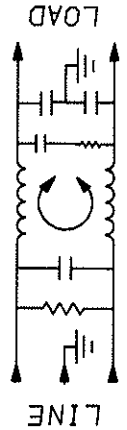
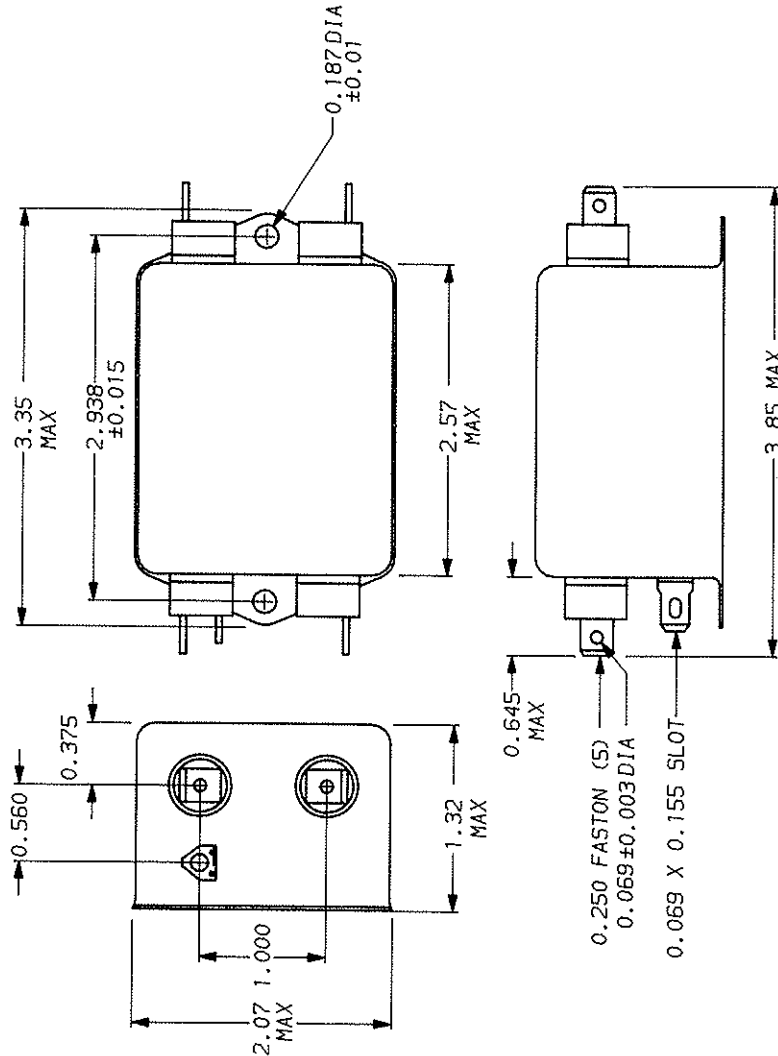
STORAGE TEMPERATURE:  
-40°C TO +85°C  
HUMIDITY:  
21 DAYS @ 40°C 95% RH  
CURRENT OVERLOAD TEST:  
6 TIMES RATED CURRENT FOR 8 SECONDS

**TEST SPECIFICATIONS:**

INDUCTANCE:  
.495 mH NOMINAL  
CAPACITANCE: MEASURED @ 1 KHz, 0.25 VAC MAX., 25°C ±1°C)  
.003µF ±20%  
LINE TO GROUND,  
1.08µF ±20%  
DISCHARGE RESISTOR  
330KΩ  
LINE TO LINE,  
6000 MΩ (MIN) AT 100 VDC  
INSULATION RESISTANCE  
20°C AND 50% RH

**RECOMMENDED RECEIVING INSPECTION HIPOT:**

2250 VDC FOR 1 MINUTE  
LINES TO GROUND,  
1450 VDC FOR 1 MINUTE  
LINES TO LINE,  
FILTER APPROVAL:  
THE BEST WAY TO SELECT AND QUALIFY A FILTER IS FOR YOUR ENGINEERING TO TEST THE UNIT IN YOUR EQUIPMENT.



FREQUENCY MHz	50Ω - 50Ω (MINIMUM) INSERTION LOSS									
	.15	.5	1	2	5	10	20	30		
COMMON	10	20	27	33	38	40	45	46		
DIFF.	20	43	55	62	70	72	60	60		

This document is proprietary to CORCOM INC. and is not to be reproduced nor used for manufacturing purposes except on CORCOM's order or prior written consent.

TOLERANCE EXCEPT AS NOTED  
DECIMAL: .XXX .XX .X ANGLES  
ENGLISH: ±.025 ±1°  
METRIC: ± MATERIAL:  
AS SUPPLIED

FINISH:  
AS SUPPLIED

**corcom**  
LIBERTYVILLE, IL 60048

**POWER LINE FILTER**

SCALE: NTS 11-5-90  
DATE: 11-5-90  
REV. NO. 10EDK1.01

DESIGNED BY: CFM  
DRAWN BY: CFM

# Mouser Electronics

Authorized Distributor

Click to View Pricing, Inventory, Delivery & Lifecycle Information:

[TE Connectivity:](#)

[10EDK1](#)