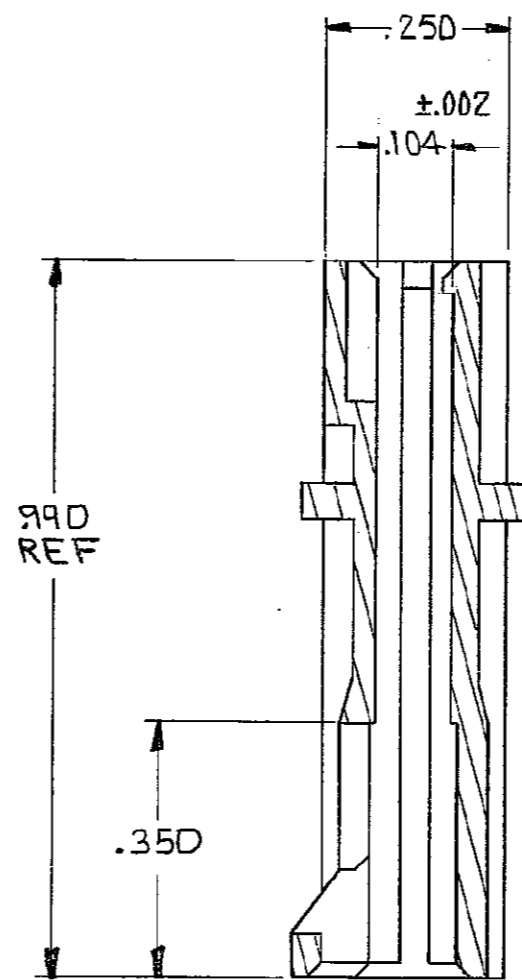
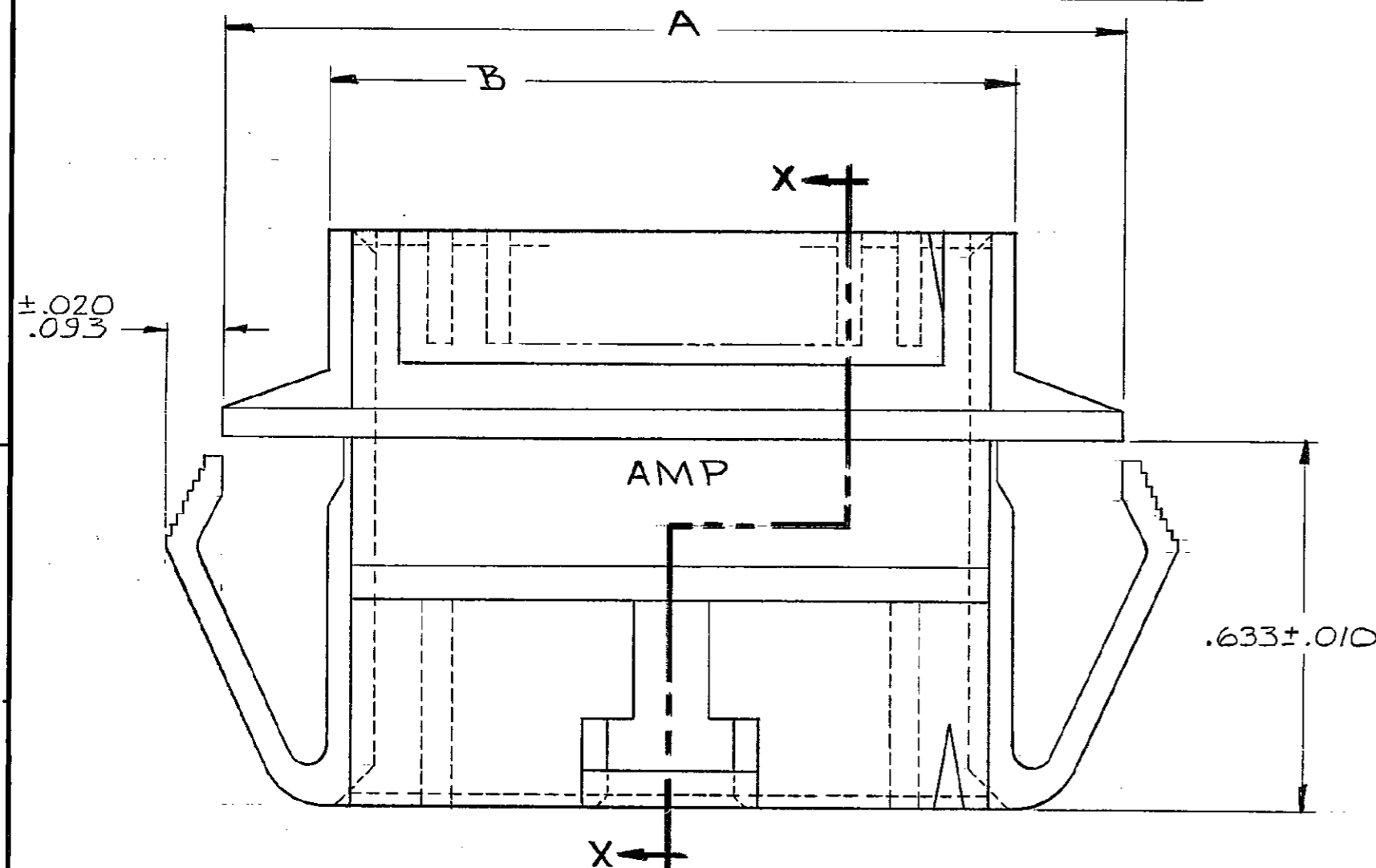


THIS DRAWING IS UNPUBLISHED. RELEASED FOR PUBLICATION

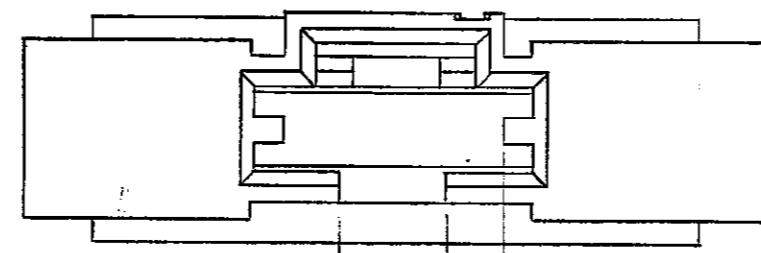
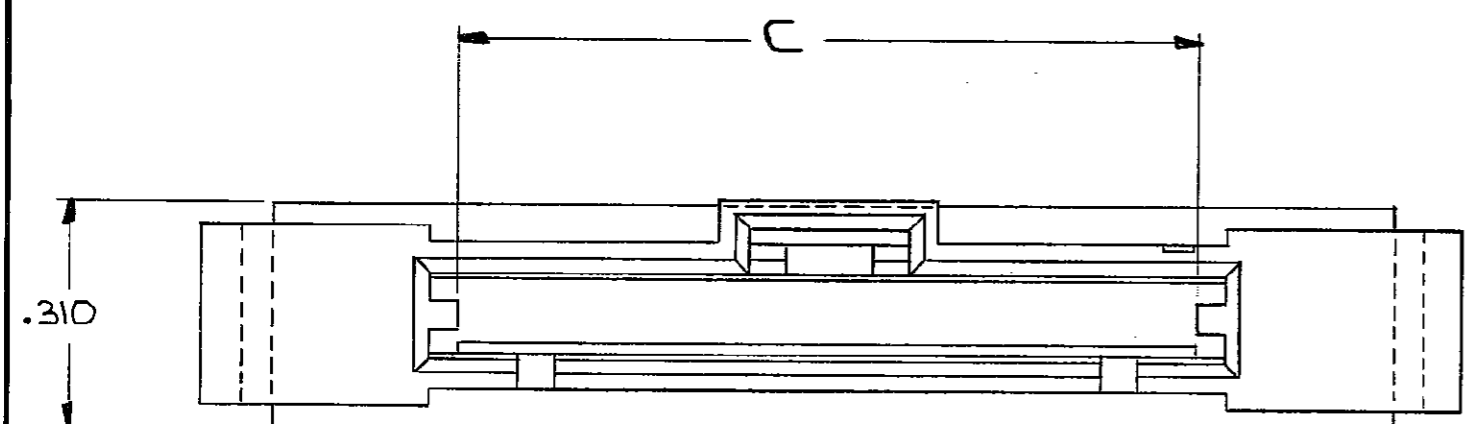
© COPYRIGHT

| REVISIONS | | | | | | |
|-----------|---|------|-----|---------------------------|---------|----------|
| P | F | ZONE | LTR | DESCRIPTION | DATE | APPROVED |
| | | G2 | | REVISED PER ECO-11-005140 | 30MAR11 | HMR |

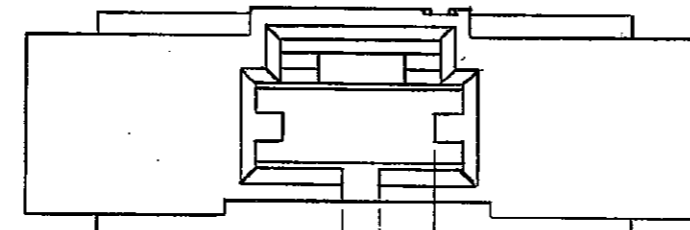


- 1. SHROUD ACCEPTS RIBBED PIN ASSEMBLIES
- 2. SHROUD MATES WITH LATCHING RECEPTACLE ASSEMBLIES
- 3. OBSOLETE PARTS: OBSOLETE CIS STREAMLINING PER D.RENAUD/D.SINISI

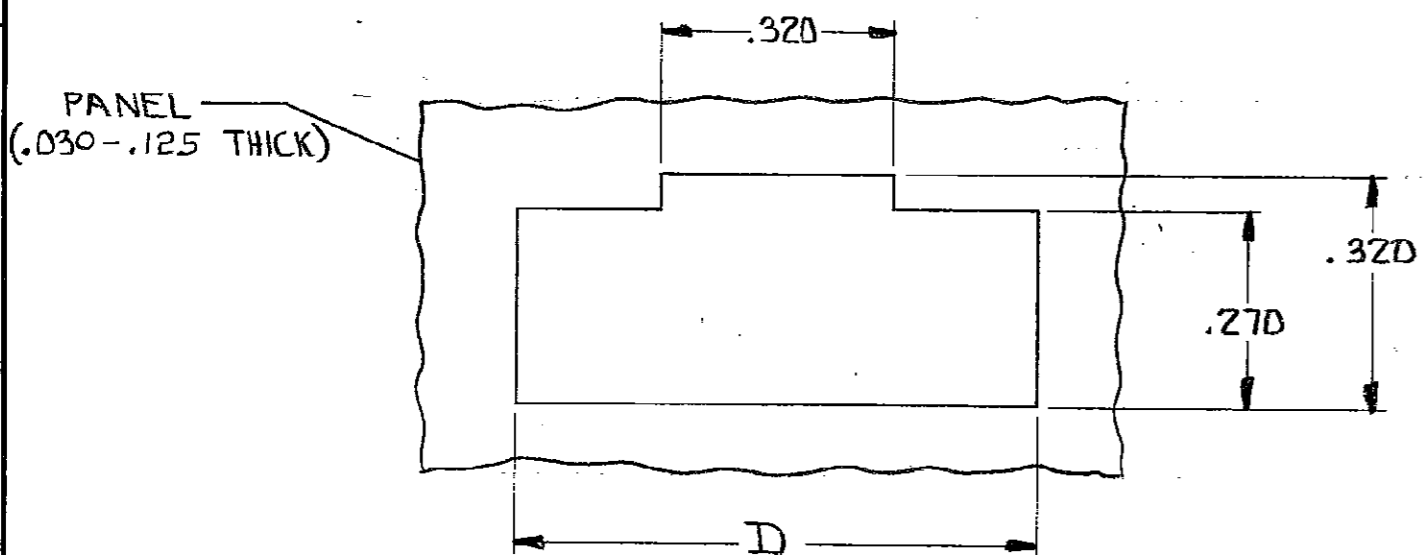
SECTION X-X



DETAIL FOR -2 ONLY (3 POSITION)



DETAIL FOR -1 ONLY (2 POSITION)



RECOMMENDED PANEL CUTOUT

| 3 | OBSOLETE | 2.925 | 2.505 | 2.665 | 3.035 | 25 | 2-103682-4 |
|---|----------|-------|-------|-------|-------|----|------------|
| | | 2.825 | 2.405 | 2.565 | 2.935 | 24 | 2- -3 |
| | OBSOLETE | 2.725 | 2.305 | 2.465 | 2.835 | 23 | 2- -2 |
| | 3 | 2.625 | 2.205 | 2.365 | 2.735 | 22 | 2- -1 |
| | | 2.525 | 2.105 | 2.265 | 2.635 | 21 | 2- -0 |
| | | 2.425 | 2.005 | 2.165 | 2.535 | 20 | 1- -9 |
| | | 2.325 | 1.905 | 2.065 | 2.435 | 19 | 1- -8 |
| | OBSOLETE | 2.225 | 1.805 | 1.965 | 2.335 | 18 | 1- -7 |
| | 3 | 2.125 | 1.705 | 1.865 | 2.235 | 17 | 1- -6 |
| | | 2.025 | 1.605 | 1.765 | 2.135 | 16 | 1- -5 |
| | OBSOLETE | 1.925 | 1.505 | 1.665 | 2.035 | 15 | 1- -4 |
| | | 1.825 | 1.405 | 1.565 | 1.935 | 14 | 1- -3 |
| | | 1.725 | 1.305 | 1.465 | 1.835 | 13 | 1- -2 |
| | | 1.625 | 1.205 | 1.365 | 1.735 | 12 | 1- -1 |
| | OBSOLETE | 1.525 | 1.105 | 1.265 | 1.635 | 11 | 1- -0 |
| | | 1.425 | 1.005 | 1.165 | 1.535 | 10 | -9 |
| | | 1.325 | .905 | 1.065 | 1.435 | 9 | -8 |
| | | 1.225 | .805 | .965 | 1.335 | 8 | -7 |
| | | 1.125 | .705 | .865 | 1.235 | 7 | -6 |
| | | 1.025 | .605 | .765 | 1.135 | 6 | -5 |
| | | .925 | .505 | .665 | 1.035 | 5 | -4 |
| | | .825 | .405 | .565 | .935 | 4 | -3 |
| | | .725 | .305 | .465 | .835 | 3 | -2 |
| | | .625 | .205 | .365 | .735 | 2 | 103682-1 |

103682

| | | | |
|--|-------------|-----------|---|
| UNLESS OTHERWISE SPECIFIED DIMENSIONS ARE IN INCHES. TOLERANCES ON: DECIMALS ±.005 ANGLES ± | CONTRACT NO | | |
| | DR | | |
| MATERIAL BLACK THERMOPLASTIC | CHK | 5/29/85 | NAME SHROUD, PIN, PANEL MOUNT, AMPMODU MTE, SINGLE RDIV, .100 Ø |
| | APPD | 5/29/85 | |
| FINISH | APPD | 5/29/85 | DRAWING NO 103682 |
| | OSGN APPD | | |
| | OTHER APPD | SIZE C | FSCM NO 00779 |
| | | SCALE | SHEET |

Mouser Electronics

Authorized Distributor

Click to View Pricing, Inventory, Delivery & Lifecycle Information:

[TE Connectivity:](#)

[1-103682-1](#)