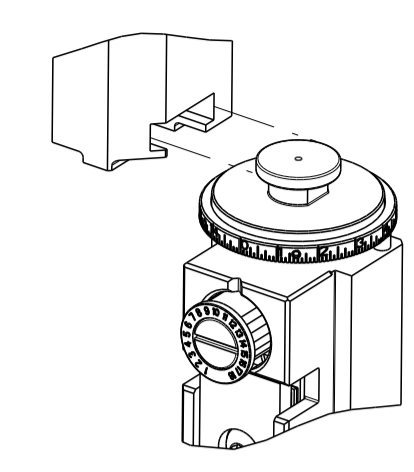


PART NUMBER	REVISION	DESCRIPTION	FEED TYPE
2150763-1	B	FINE CRIMP HEIGHT ADJUST	MECHANICAL
2150763-2	B	FINE CRIMP HEIGHT ADJUST	PNEUMATIC
7-2150763-1	B	MECHANICAL AND CRIMP TOOLING KIT	MECHANICAL
7-2150763-2	B	PNEUMATIC AND CRIMP TOOLING KIT	PNEUMATIC
7-2150763-7	A	CRIMP TOOLING KIT	-

ATLANTIC VERSION TERMINATOR INTERFACE ADAPTER



APPLICATOR DATA		
CRIMP	SIZE	TYPE
WIRE	1.40 mm [.055]	F
INSUL	-	-
APPL INSTRUCTIONS 408-35043		

TERMINAL DATA: TE TERMINAL		TE CRIMP SPECIFICATION	
TERMINAL NAME: RECEPTACLE, FASTON, .110 SERIES			
WIRE STRIP LENGTH		INSULATION DIAMETER RANGE	
3.58-4.34 mm [.141-.171 IN]		∅	-
TERMINAL APPLICATION SPECIFICATION	114-2036		
TERMINALS APPLIED			
TE TERMINAL	TE TERMINAL	TE TERMINAL	TE TERMINAL
1742936-1			

WIRE SIZE	CRIMP HEIGHT mm [INCH]	CRIMP HEIGHT REFERENCE SETTING
22 AWG	0.79+/-0.05 [.031+/-0.002]	5.3
24 AWG	0.71+/-0.05 [.028+/-0.002]	6.1
26 AWG	0.69+/-0.05 [.027+/-0.002]	6.3

- 1. RECOMMENDED SPARE PARTS
- 2. REFER TO SUPPLIED INSTRUCTION SHEET FOR CLEANING, LUBRICATION AND STORAGE OF APPLICATOR.
- 3. APPLY PART NUMBER 1-23419-5 LOCTITE TO THREADS OF ITEM 180.
- 4. CRIMP HEIGHT REFERENCE SETTING WAS THE SETTING USED WHEN THE APPLICATOR WAS QUALIFIED AT THE FACTORY. ADJUSTMENT MAY BE NECESSARY WHEN RUNNING APPLICATOR IN THE FIELD.
- 5. TERMINAL LUBRICANT IS RECOMMENDED.
- 6. UNLESS SPECIFIED OTHERWISE TORQUE VALUES SHALL BE USED PER DOCUMENT, 101-35000.

***WARNING**
ON INSTALLATION, SET WIRE DISC TO CRIMP HEIGHT REFERENCE SETTING FOR LARGEST WIRE SIZE. CRIMP HEIGHT REFERENCE SETTINGS GREATER THAN THE VALUE SHOWN MAY CAUSE DAMAGE TO THE CRIMP TOOLING. REFER TO THE INSTRUCTION SHEET FOR PROPER SETUP AND ADJUSTMENTS.

ATLANTIC VERSION
Shown on sheets 1 of 4 & 2 of 4
(Pacific version shown on sheets 3 of 4 & 4 of 4)

LOC	DIST	REVISIONS					
A	66	P	LTN	DESCRIPTION	DATE	OWN	APVD
		A		RELEASED	31MAY2018	MZ	CT
		B		ECR-22-141635	07JUN2022	JWC	TE

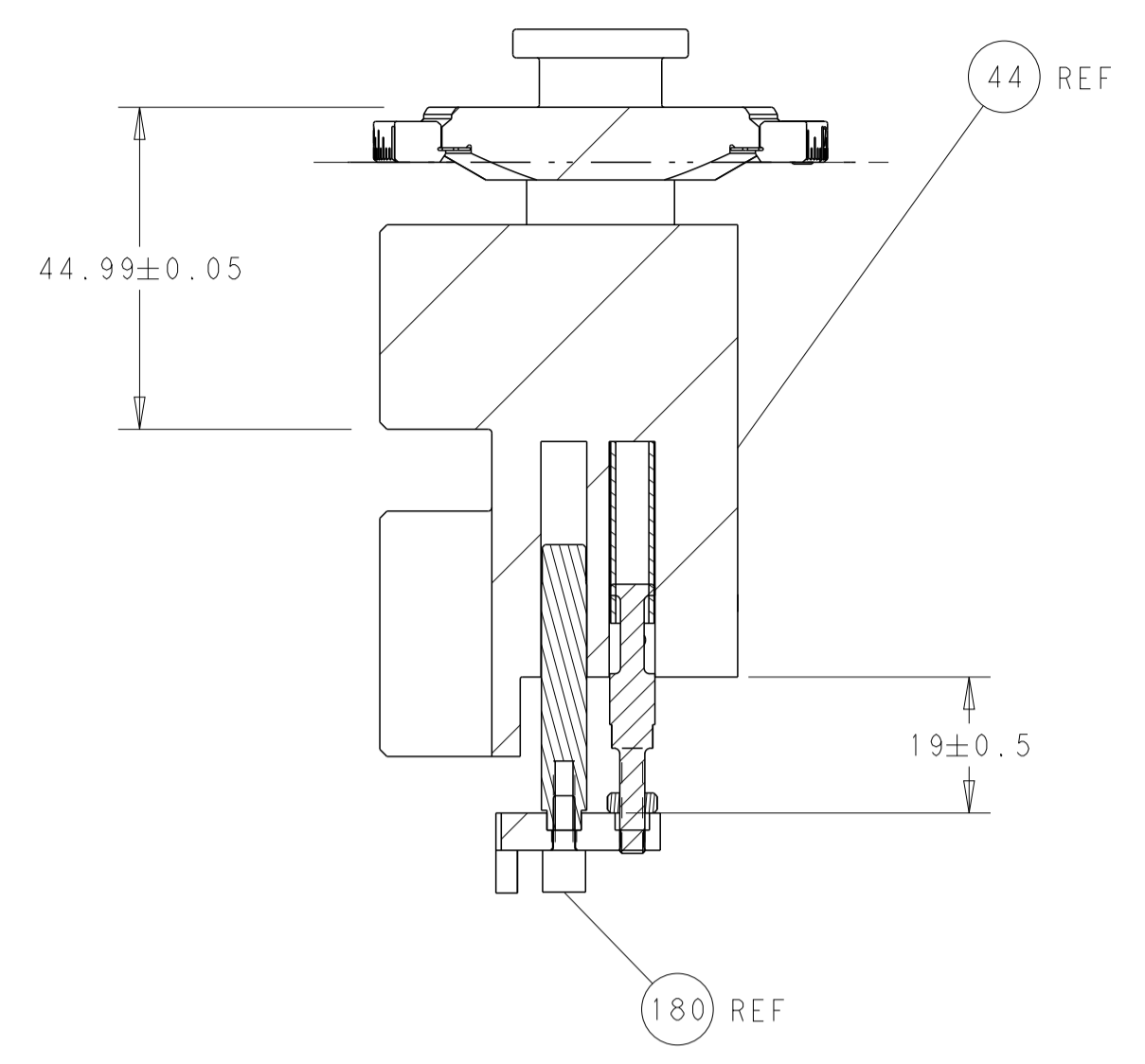
-	1	-	1	-	2119641-1	FEED CAM, AIR FEED	248	
-	-	1	-	1	2119580-1	MECHANICAL FEED ASSEMBLY	239	
-	1	-	1	-	2844940-4	AIR FEED MODULE	238	
-	1	1	1	1	1-455888-0	SPACER, CRIMPER	185	
-	1	1	1	1	1752354-8	STANDOFF, HOLD-DOWN	180	
-	1	1	1	1	6-993111-6	PIN, SLOTTED SPRING 3.0 X 14.0	177	
-	1	1	1	1	8-22280-7	SPRING, COMPRESSION	176	
-	1	1	1	1	1752353-2	GUIDE PIN, HOLDDOWN	175	
-	1	1	1	1	1901680-2	GUIDE PIN, HOLDDOWN	174	
-	REF	REF	REF	REF	994970-2	COUNTER, MAGNETIC	164	
-	1	1	1	1	2119955-2	ASSY, LUBRICATOR, END FEED	84	
-	1	1	1	1	455888-6	SPACER, CRIMPER	82	
-	1	1	1	1	2119791-5	DEPRESSOR, WIRE	73	
-	1	1	1	1	1803607-4	DOCUMENTATION PACKAGE	71	
-	2	2	2	2	2-18032-2	SCR, SET, FLT PNT, M3 X 10.0	70	
-	1	1	1	1	2119943-1	WASHER, SPACER	69	
-	1	1	1	1	2119740-1	TAG, IDENTIFICATION	67	
-	2	2	2	2	2168078-1	SCREW, DRIVE, RH, RoHS, 2 x .188	66	
-	1	1	1	1	2-1901681-8	HOLDDOWN, TERMINAL	65	
-	2	2	2	2	2168400-8	SHCS, LOW HEAD, RoHS, M4 X 16	64	
-	1	1	1	1	2168083-2	SCR, SKT HD CAP, RoHS, M4 X 8.0	60	
-	1	1	1	1	5-18022-5	SCR, HEX HD CAP, M4 X 6.0	59	
-	-	1	-	1	2063961-8	FEED FINGER	58	
-	3	3	3	3	2168400-4	SHCS, LOW HEAD, RoHS, M4 X 8	57	
-	2	2	2	2	1-2168083-4	SCR, SKT HD CAP, RoHS, M4 X 5	56	
-	2	2	2	2	5018030-1	NUT, HEX, REG, RoHS, M3	54	
-	2	2	2	2	986965-8	NUT, LOCK, HEX, TORQUE (M4)	53	
-	1	1	1	1	1-5018030-0	NUT, HEX, REG, RoHS, M3.5	52	
-	1	-	1	-	2063961-8	FEED FINGER	51	
-	1	2	1	2	18023-9	SCR, SKT HD CAP M4 X 6.0	49	
-	-	1	-	1	2119652-1	FEED CAM, PRE FEED	48	
-	-	1	-	1	2119653-1	FEED CAM, POST FEED	47	
-	1	1	1	1	2119655-5	APPLICATOR BASIC ASSEMBLY, EF	46	
-	1	1	1	1	1803517-1	RAM ASSEMBLY, EF ATLANTIC	44	
-	1	1	1	1	1803602-1	SCR, BHSC, RoHS (M8 X 25)	41	
-	7	7	7	7	1-18028-2	WASHER, FLAT, REG M4	33	
-	2	2	2	2	2168083-9	SCR, SKT HD CAP, RoHS, M4 X 20	31	
-	2	2	2	2	1-2168083-0	SCR, SKT HD CAP, RoHS, M4 X 10	29	
-	1	1	1	1	1803203-1	BLOCK, FRONT DEPRESSOR	28	
-	1	1	1	1	240639-2	STRIPPER (MACHINING)	27	
-	2	2	2	2	1-2168083-5	SCR, SKT HD CAP, RoHS, M4 X 30	25	
-	1	1	1	1	1752371-5	PLATE, STRIP GUIDE	24	
-	1	1	1	1	240825-9	PLATE, STRIP HOLD DOWN	23	
-	2	2	2	2	2-22281-3	SPRING, COMPRESSION	22	
-	1	1	1	1	1803292-4	DRAG	20	
-	2	2	2	2	1901259-1	GUIDE, LOWER STRIP	18	
-	4	4	4	4	1-2079383-1	SCR, BHSC, RoHS (M6 X 12)	17	
-	1	1	1	1	1752360-1	SPACER, HOLD-DOWN	13	
-	1	1	1	1	240644-9	PLATE, REAR SHEAR	11	
-	2	2	2	2	1-240645-1	SPACER, SHEAR PLATE	10	
-	1	1	1	1	2-240642-3	PLATE, FRONT SHEAR	9	
-	1	2	2	1	1-1333224-8	ANVIL, COMBINATION (E.F. WIRE/B ONLY)	8	
-	1	1	1	1	9-240651-6	BLADE, SLUG	7	
-	-	-	-	-	-	-	6	
-	1	1	1	1	4-240641-3	SPACER	5	
-	-	-	-	-	-	-	4	
-	-	-	-	-	-	-	3	
-	-	-	-	-	-	-	2	
-	1	2	2	1	1-456402-5	CRIMPER, WIRE PREMIUM	1	
-	77	72	71	2	-1	PART NO	DESCRIPTION	ITEM NO

DIMENSIONS:		TOLERANCES UNLESS OTHERWISE SPECIFIED:		MATERIAL:		FINISH:		WEIGHT:		SCALE:	
mm	0 PLC ±	1 PLC ±	2 PLC ±	3 PLC ±	4 PLC ±	ANGLES	FINISH	WT	SCALE	SHEET	REV
									1:1	1 OF 4	B



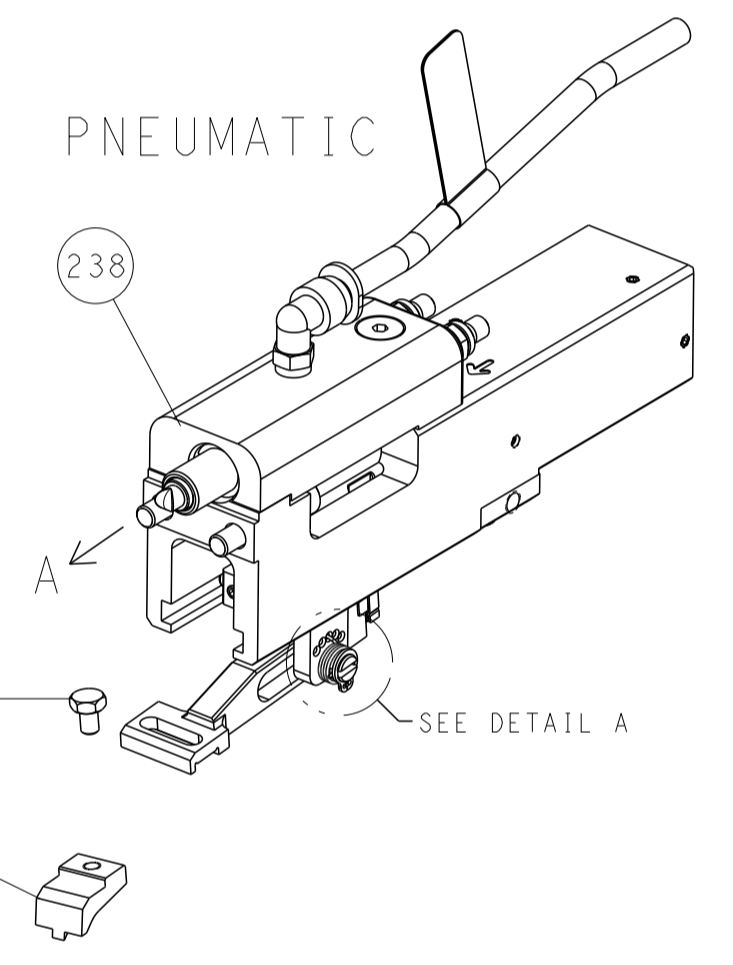
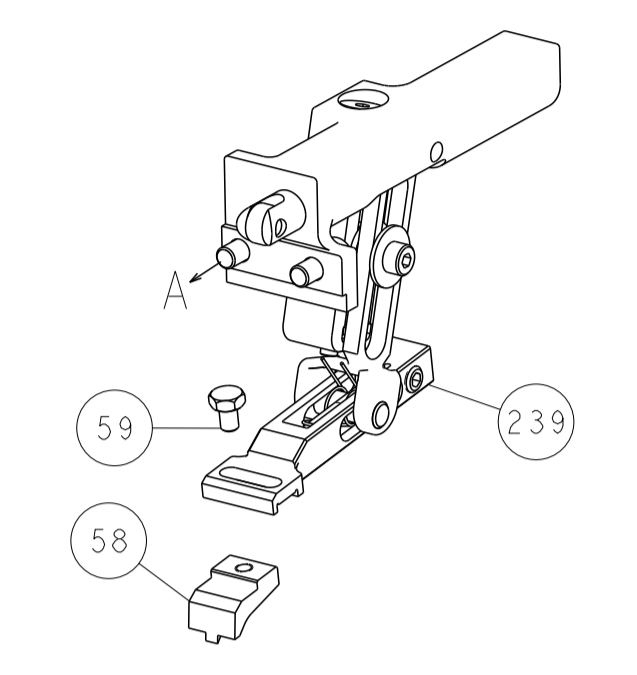
Ocean End Feed Applicator

LOC	DIST	REV	DESCRIPTION	DATE	OWN	APVD
A	66		SEE SHEET 1			

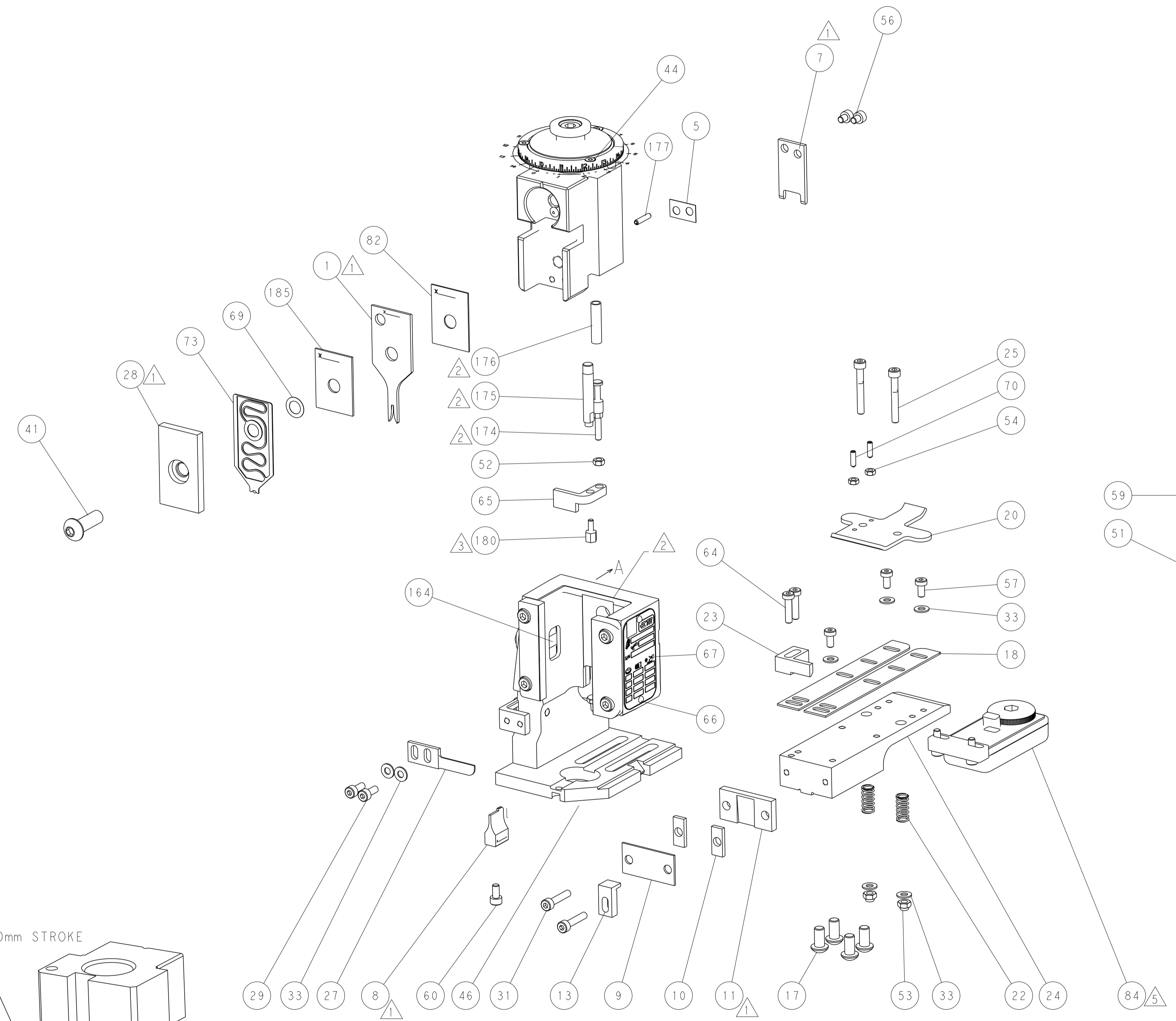
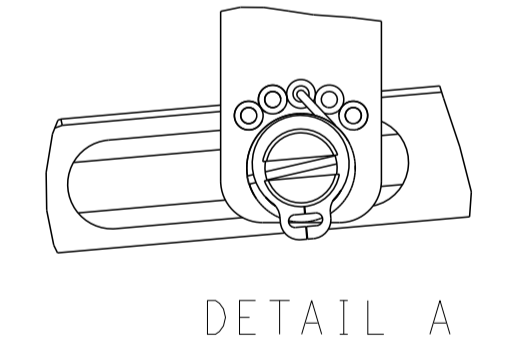


HOLDDOWN SET-UP

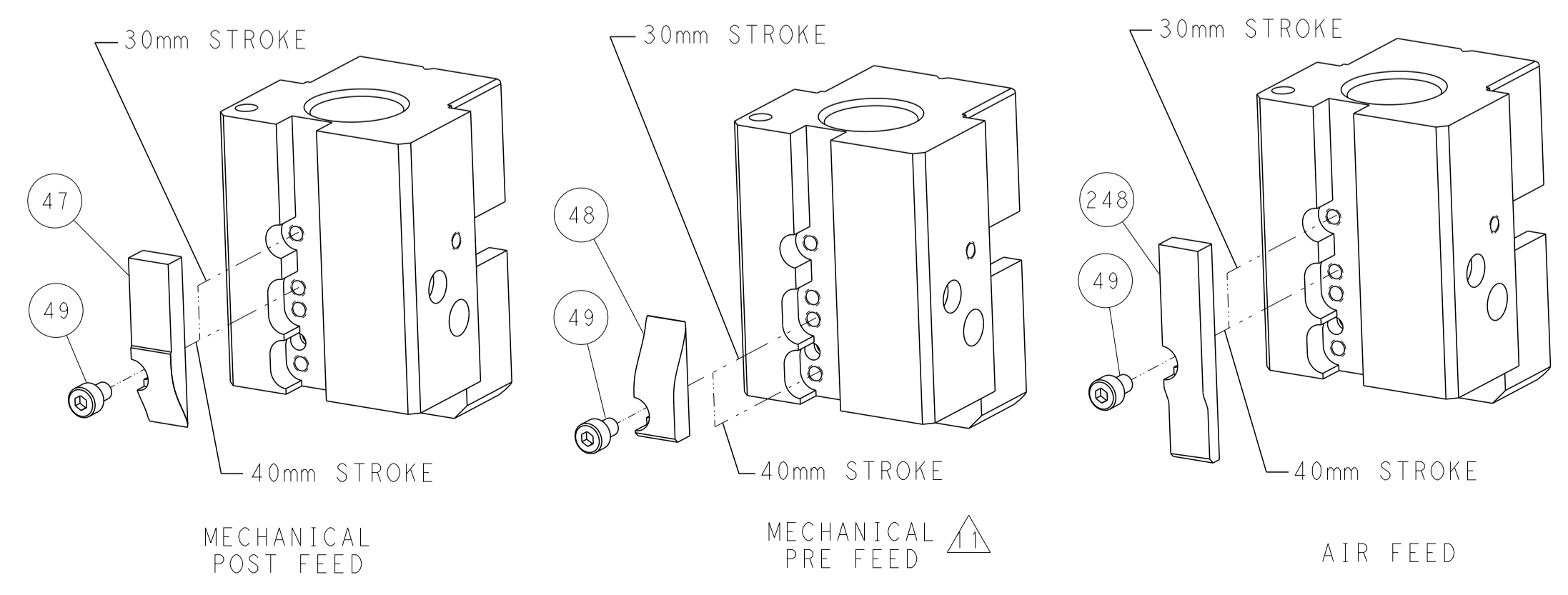
FEED TYPE MECHANICAL



FEED SPRING SETTING POSITION



CAM POSITIONS

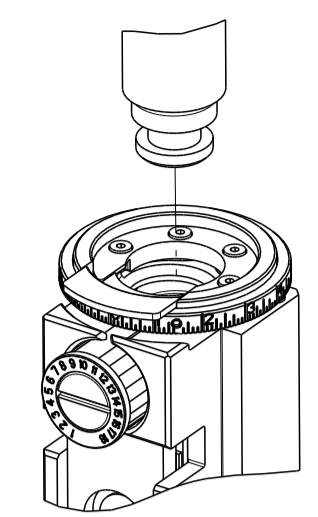


ATLANTIC VERSION
 Shown on sheets 1 of 4 & 2 of 4
 (Pacific version shown on sheets 3 of 4 & 4 of 4)

<small>THIS DRAWING IS UNPUBLISHED. RELEASED FOR PUBLICATION BY TYCO ELECTRONICS CORPORATION. ALL RIGHTS RESERVED.</small>		DWN: M. ZHAO 21NOV2016 CHK: K. ZHANG 21NOV2016 APVD: K. ZHANG 21NOV2016	TE Connectivity Harrisburg, PA 17105-3608
DIMENSIONS: mm TOLERANCES UNLESS OTHERWISE SPECIFIED: 0 PLC ± 1 PLC ± 2 PLC ± 3 PLC ± 4 PLC ± ANGLES FINISH ±		NAME: Ocean End Feed Applicator PRODUCT SPEC: APPLICATION SPEC: SIZE: A1 CAGE CODE: 00779 DRAWING NO: C=2150763	RESTRICTED TO: SCALE: 1:1 SHEET: 2 of 4 REV: B
MATERIAL:		WEIGHT:	Customer Accessible Production Drawing

PART NUMBER	REVISION	DESCRIPTION	FEED TYPE
2-2150763-1	B	FINE CRIMP HEIGHT ADJUST	MECHANICAL
2-2150763-2	B	FINE CRIMP HEIGHT ADJUST	PNEUMATIC
7-2150763-7	A	CRIMP TOOLING KIT	-

PACIFIC VERSION TERMINATOR INTERFACE ADAPTER



APPLICATOR DATA

CRIMP	SIZE	TYPE
WIRE	1.40 mm [.055]	F
INSUL	-	-

APPL INSTRUCTIONS
408-35043

TERMINAL DATA: TE TERMINAL TE CRIMP SPECIFICATION

TERMINAL NAME: RECEPTACLE, FASTON, .110 SERIES

WIRE STRIP LENGTH	INSULATION DIAMETER RANGE
3.58-4.34 mm [.141-.171 IN]	∅ -

TERMINAL APPLICATION SPECIFICATION 114-2036

TERMINALS APPLIED

TE TERMINAL	TE TERMINAL	TE TERMINAL	TE TERMINAL
1742936-1			

WIRE SIZE	CRIMP HEIGHT mm [INCH]	CRIMP HEIGHT REFERENCE SETTING
22 AWG	0.79+/-0.05 [.031+/-0.002]	5.3
24 AWG	0.71+/-0.05 [.028+/-0.002]	6.1
26 AWG	0.69+/-0.05 [.027+/-0.002]	6.3

- 1 RECOMMENDED SPARE PARTS
- 2 REFER TO SUPPLIED INSTRUCTION SHEET FOR CLEANING, LUBRICATION AND STORAGE OF APPLICATOR.
- 3 APPLY PART NUMBER 1-23419-5 LOCTITE TO THREADS OF ITEM 180.
- 4 CRIMP HEIGHT REFERENCE SETTING WAS THE SETTING USED WHEN THE APPLICATOR WAS QUALIFIED AT THE FACTORY. ADJUSTMENT MAY BE NECESSARY WHEN RUNNING APPLICATOR IN THE FIELD.
- 5 TERMINAL LUBRICANT IS RECOMMENDED.
- 6. UNLESS SPECIFIED OTHERWISE TORQUE VALUES SHALL BE USED PER DOCUMENT, 101-35000.

***WARNING**
ON INSTALLATION, SET WIRE DISC TO CRIMP HEIGHT REFERENCE SETTING FOR LARGEST WIRE SIZE. CRIMP HEIGHT REFERENCE SETTINGS GREATER THAN THE VALUE SHOWN MAY CAUSE DAMAGE TO THE CRIMP TOOLING. REFER TO THE INSTRUCTION SHEET FOR PROPER SETUP AND ADJUSTMENTS.

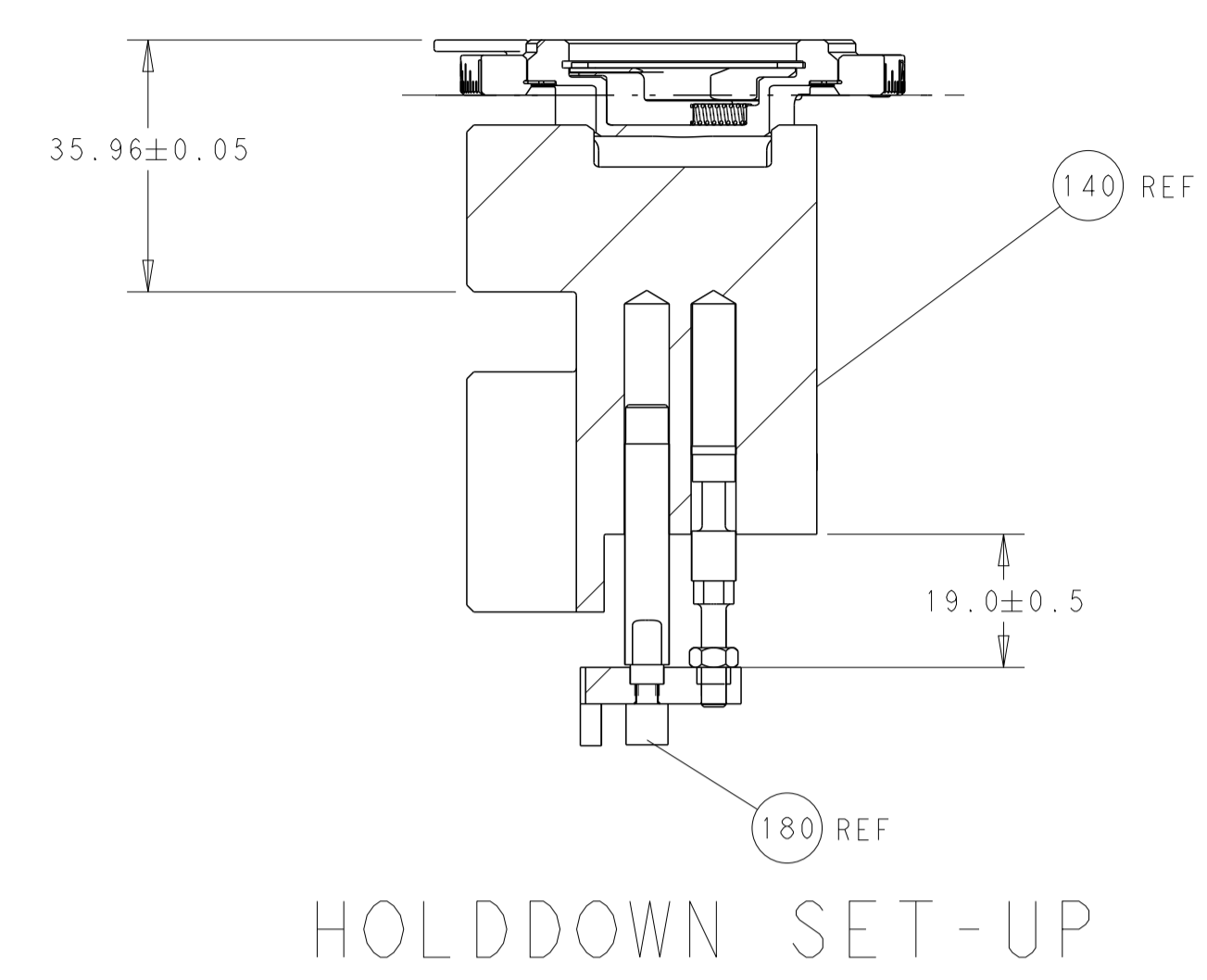
PACIFIC VERSION
Shown on sheets 3 of 4 & 4 of 4
(Atlantic version shown on sheets 1 of 4 & 2 of 4)

LOC	DIST	REV	DATE	BY	APPD
A	66	-	-	-	-

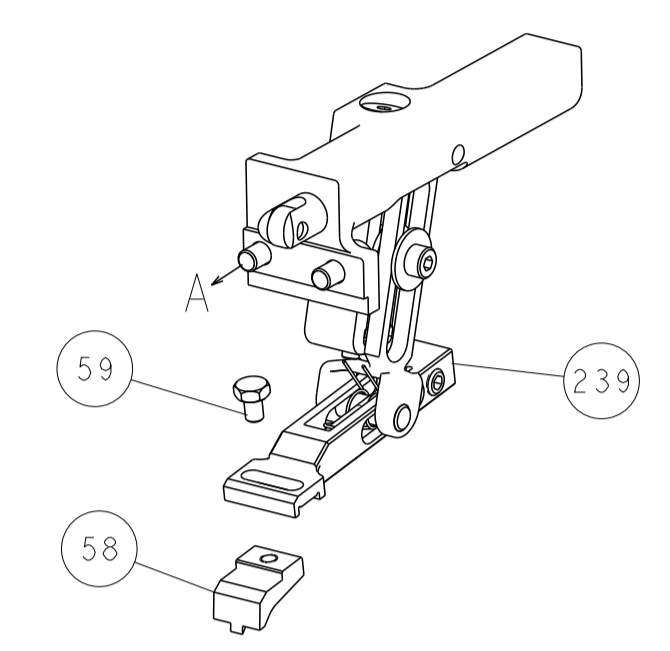
REV	DATE	BY	APPD	DESCRIPTION	ITEM NO
-	-	1		2119580-1 MECHANICAL FEED ASSEMBLY	239
-	1	-		2844940-4 AIR FEED MODULE	238
-	4	4		2079383-9 SCR, BHSC, RoHS (M6 X 20)	186
-	1	1		1-455888-0 SPACER, CRIMPER	185
3	-	1		1752354-8 STANDOFF, HOLD-DOWN	180
-	1	1		6-993111-6 PIN, SLOTTED SPRING 3.0 X 14.0	177
-	1	1		8-22280-7 SPRING, COMPRESSION	176
-	1	1		1752353-2 GUIDE PIN, HOLDDOWN	175
-	1	1		1901680-2 GUIDE PIN, HOLDDOWN	174
-	REF	REF		994970-2 COUNTER, MAGNETIC	164
-	1	-		2119641-2 FEED CAM, AIR FEED	152
-	1	1		2168083-8 SCR, SKT HD CAP, RoHS, M4 X 16	144
-	-	1		2119653-2 FEED CAM, POST FEED	142
-	1	1		2119655-6 APPLICATOR BASIC ASSEMBLY, EF	141
-	1	1		1803518-1 RAM ASSEMBLY, EF PACIFIC	140
5	-	1		2119955-2 ASSY, LUBRICATOR, END FEED	84
-	1	1		455888-6 SPACER, CRIMPER	82
-	1	1		2119791-5 DEPRESSOR, WIRE	73
-	1	1		1803607-4 DOCUMENTATION PACKAGE	71
-	2	2		2-18032-2 SCR, SET, FLT PNT, M3 X 10.0	70
-	1	1		2119943-1 WASHER, SPACER	69
-	1	1		2119740-1 TAG, IDENTIFICATION	67
-	2	2		2168078-1 SCREW, DRIVE, RH, RoHS, 2 x .188	66
-	1	1		2-1901681-8 HOLDDOWN, TERMINAL	65
-	2	2		2168400-8 SHCS, LOW HEAD, RoHS, M4 X 16	64
-	1	1		5-18022-5 SCR, HEX HD CAP, M4 X 6.0	59
-	-	1		2063961-8 FEED FINGER	58
-	3	3		2168400-4 SHCS, LOW HEAD, RoHS, M4 X 8	57
-	2	2		1-2168083-4 SCR, SKT HD CAP, RoHS, M4 X 5	56
-	2	2		5018030-1 NUT, HEX, REG, RoHS, M3	54
-	2	2		986965-8 NUT, LOCK, HEX, TORQUE (M4)	53
-	1	1		1-5018030-0 NUT, HEX, REG, RoHS, M3.5	52
-	1	-		2063961-8 FEED FINGER	51
-	1	2		18023-9 SCR, SKT HD CAP M4 X 6.0	49
-	-	1		2119652-1 FEED CAM, PRE FEED	48
-	1	1		1803602-1 SCR, BHSC, RoHS (M8 X 25)	41
-	7	7		1-18028-2 WASHER, FLAT, REG M4	33
-	2	2		2168083-9 SCR, SKT HD CAP, RoHS, M4 X 20	31
-	2	2		1-2168083-0 SCR, SKT HD CAP, RoHS, M4 X 10	29
-	1	1		1803203-1 BLOCK, FRONT DEPRESSOR	28
-	1	1		240639-2 STRIPPER (MACHINING)	27
-	2	2		1-2168083-5 SCR, SKT HD CAP, RoHS, M4 X 30	25
-	1	1		1752371-5 PLATE, STRIP GUIDE	24
-	1	1		240825-9 PLATE, STRIP HOLD DOWN	23
-	2	2		2-22281-3 SPRING, COMPRESSION	22
-	1	1		1803292-4 DRAG	20
-	2	2		1901259-1 GUIDE, LOWER STRIP	18
-	1	1		1752360-1 SPACER, HOLD-DOWN	13
1	-	1		240644-9 PLATE, REAR SHEAR	11
1	-	2		1-240645-1 SPACER, SHEAR PLATE	10
1	-	1		2-240642-3 PLATE, FRONT SHEAR	9
1	1	1		1-1333224-8 ANVIL, COMBINATION (E.F. WIRE/B ONLY)	8
1	-	1		9-240651-6 BLADE, SLUG	7
-	-	-		-	6
-	1	1		4-240641-3 SPACER	5
-	-	-		-	4
-	-	-		-	3
-	-	-		-	2
1	1	1		1-456402-5 CRIMPER, WIRE PREMIUM	1

DIMENSIONS:		TOLERANCES UNLESS OTHERWISE SPECIFIED:		MATERIAL:		FINISH:		WEIGHT:		SCALE:	
mm	0 PLC ±	1 PLC ±	2 PLC ±	3 PLC ±	4 PLC ±	ANGLES	FINISH	WT	SCALE	SHEET	OF
										3	4

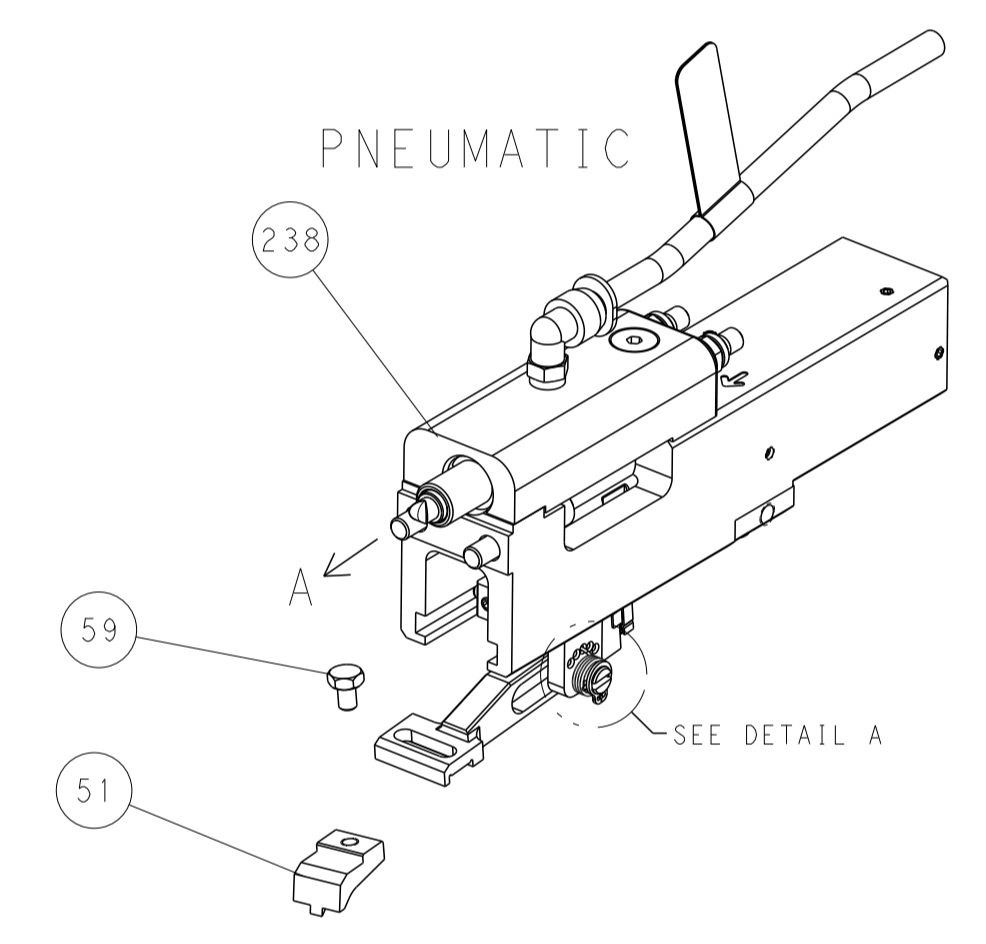
LOC	DIST	REVISIONS					
A	66	P	LTM	DESCRIPTION	DATE	OWN	APVD
		-		SEE SHEET 1			



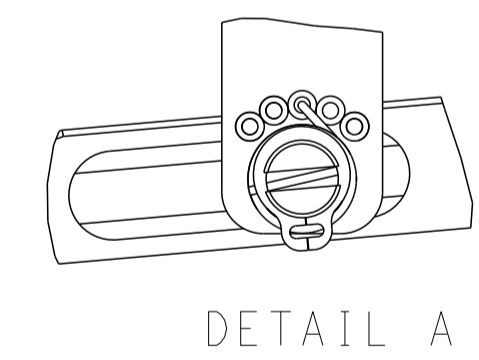
FEED TYPE
MECHANICAL



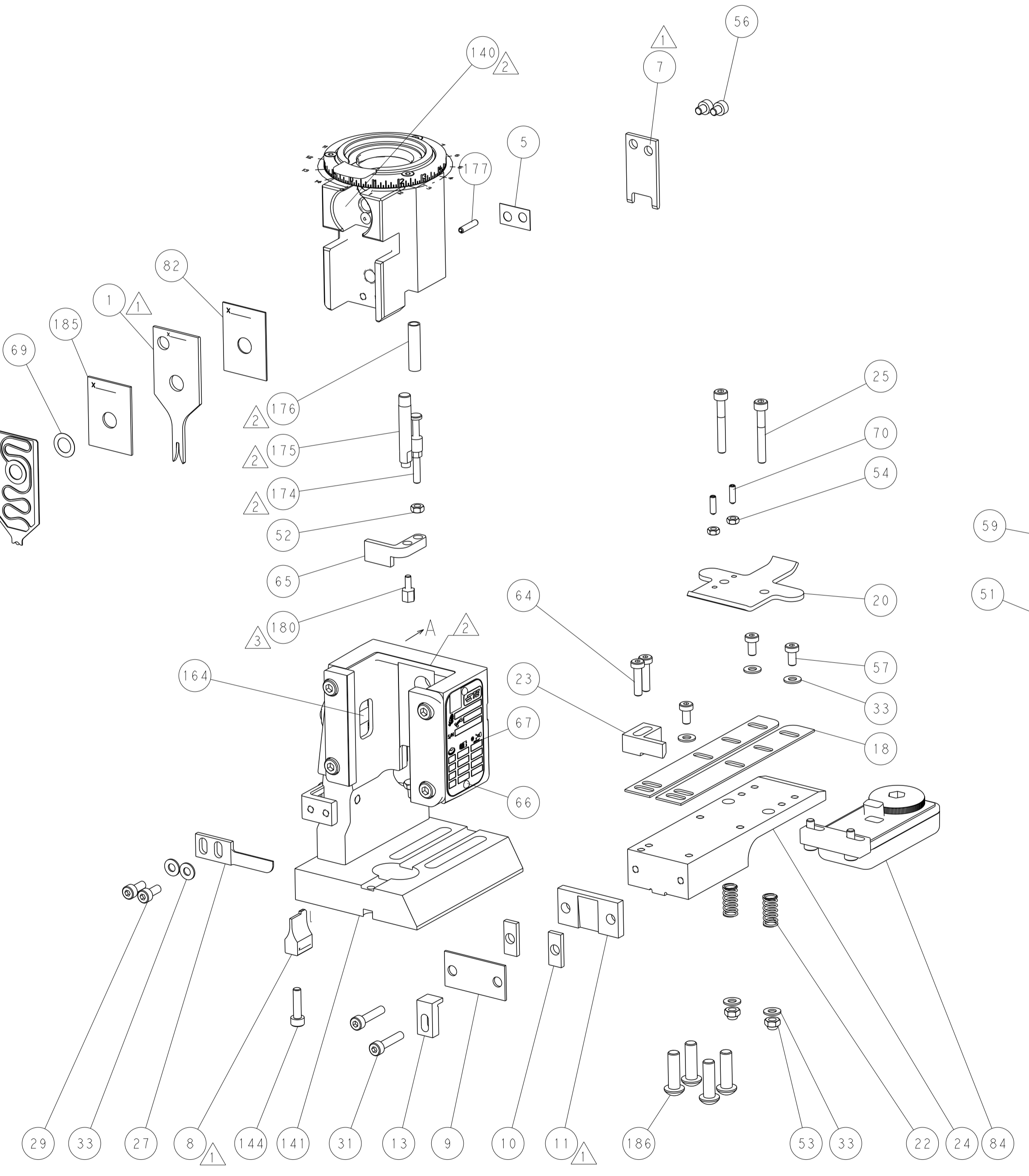
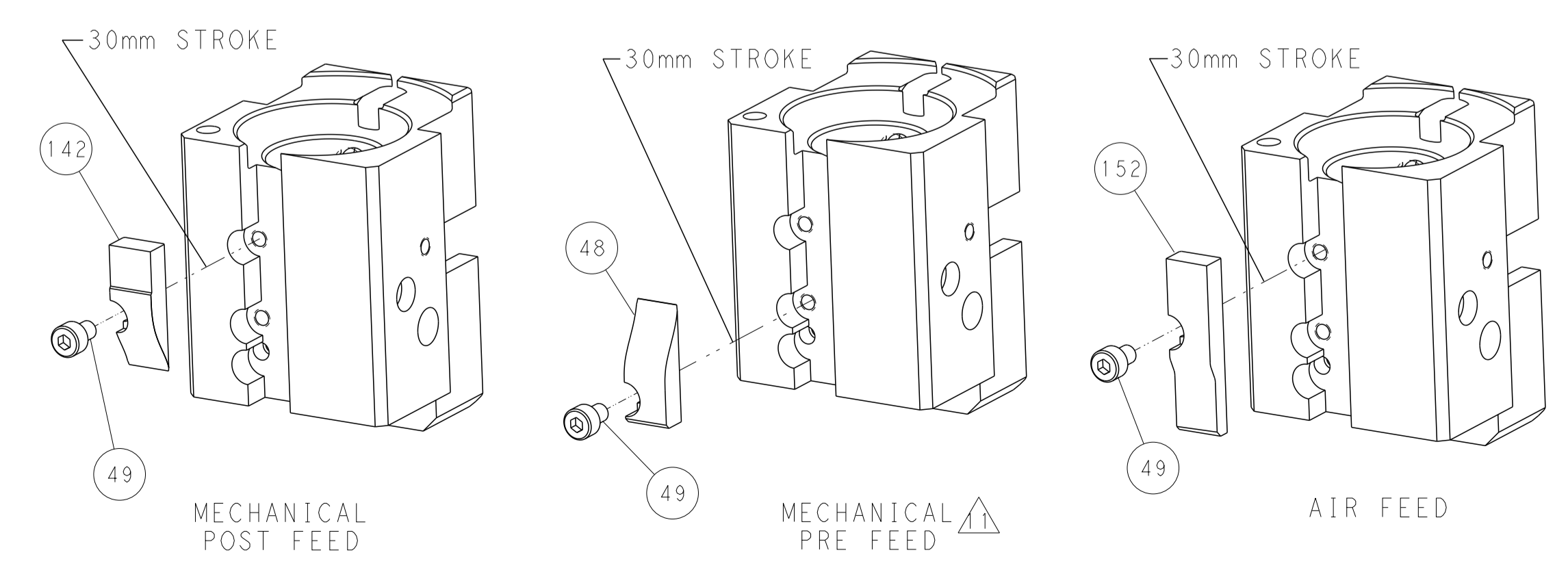
PNEUMATIC



FEED SPRING
SETTING POSITION



CAM POSITIONS



PACIFIC VERSION
 Shown on sheets 3 of 4 & 4 of 4
 (Atlantic version shown on sheets 1 of 4 & 2 of 4)

DIMENSIONS: mm 		TOLERANCES UNLESS OTHERWISE SPECIFIED: 0 PLC ± 1 PLC ± 2 PLC ± 3 PLC ± 4 PLC ± ANGLES ± FINISH		DWN M. ZHAO 21NOV2016 CHK K. ZHANG 21NOV2016 APVD K. ZHANG 21NOV2016		NAME Ocean End Feed Applier	
MATERIAL:		WEIGHT:		SIZE: A1 CAGE CODE: 00779 DRAWING NO: C=2150763		RESTRICTED TO:	
Customer Accessible Production Drawing				SCALE: 1:1		SHEET 4 OF 4 REV B	

Mouser Electronics

Authorized Distributor

Click to View Pricing, Inventory, Delivery & Lifecycle Information:

[TE Connectivity:](#)

[2150763-1](#)