

LUMAWISE ENDURANCE N BRACKET MOUNT RECEPTACLE ASSEMBLY

TE Connectivity's (TE) LUMAWISE Endurance N Bracket Mount Receptacles Assemblies are available in 3, 5 & 7 position standard and rotatable configurations. These products are specifically designed for remote mount discrete and network lighting controls for outdoor street and area lighting luminaires. Remote mounting discrete and network lighting controls simplifies the conversion and maintains the ascetics of decorative acorn, antique and vintage replicas of gas and oil metal had-lite and HPS lamps that are transitioning to LED luminaires.

BENEFITS

- Reduces field installation time and costs
- Extremely reliable and versatile, provides IP66 seal rating
- Simplifies positioning of luminaire remote mounted discrete or network lighting control

KEY FEATURE

- ANSI C136.10 and ANSI C136.41 compliant
- Shipped fully assembled
- Contains integral gasket
- Available with standard or rotatable receptacles

LUMAWISE Endurance N Bracket Mount Receptacle Assembly

APPLICATIONS

- Roadway lighting
- Street lighting
- Area lighting
(parks, walkways, school campus, etc.)
- Decorative lighting
(acorn, vintage and antique)
- Commercial lighting
(i.e. parking lots, car dealerships, etc.)

ELECTRICAL

- Receptacle assembly: 14 AWG and 18 AWG wire rated at 105° C
- Current Rating: 15 AMPS
- Voltage Range: 120 - 480VAC

MECHANICAL

- Nipple: 1/2" - 14NPAL as per ANSI/ASME B1.20.1

MATERIALS

- Aluminum metal bracket & housing
- Bracket Dimensions:
 - Width: 2.0 inch
 - Depth: 3.0 inch
 - Height: 5-1/2 inch
- Housing Dimensions:
 - Diameter: 2.56 inch
 - Height: 2.63 inch

SPECIFICATIONS

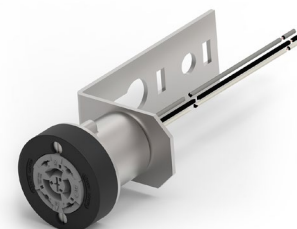
- Product: **108-32059**
- Application: **114-32115**

STANDARDS

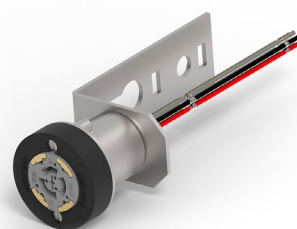
- Accepts ANSI C136.10 & ANSI C136.41 compliant discrete & network lighting controls



2363929-2



1-2363929-1



1-2363929-3

PART NUMBER LIST

Part Number	Part Description	Position
2363929-1	LUMAWISE N Bracket Mount Receptacle	3
2363929-2	LUMAWISE N Bracket Mount Receptacle	5
2363929-3	LUMAWISE N Bracket Mount Receptacle	7
1-2363929-1	LUMAWISE N Bracket Mount Rotatable Receptacle	3
1-2363929-2	LUMAWISE N Bracket Mount Rotatable Receptacle	5
1-2363929-3	LUMAWISE N Bracket Mount Rotatable Receptacle	7

te.com

© 2021 TE Connectivity. All Rights Reserved.

LUMAWISE, TE Connectivity, TE connectivity (logo) and Every Connection Counts are trademarks owned or licensed by TE Connectivity. All other logos, products and/or company names referred to herein might be trademarks of their respective owners.

While TE has made every reasonable effort to ensure the accuracy of the information in this brochure, TE does not guarantee that it is error-free, nor does TE make any other representation, warranty or guarantee that the information is accurate, correct, reliable or current. TE reserves the right to make any adjustments to the information contained herein at any time without notice. TE expressly disclaims all implied warranties regarding the information contained herein, including, but not limited to, any implied warranties of merchantability or fitness for a particular purpose. The dimensions in this catalog are for reference purposes only and are subject to change without notice. Specifications are subject to change without notice. Consult TE for the latest dimensions and design specifications.

03/21 AK

Mouser Electronics

Authorized Distributor

Click to View Pricing, Inventory, Delivery & Lifecycle Information:

[TE Connectivity:](#)

[1-2363929-2](#)