



Einsatzbereich: - 615/915 Isolierkörper

TE Teile Nr.: 60-0265-011-000
IC Ref. Nr.: 60.265.11

Elektrische Werte

Bemessungsstrom max. 5 A*
Bemessungsspannung < 5 mOhm

Werkstoff

Kontakt Messing, vergoldet

Anschluss

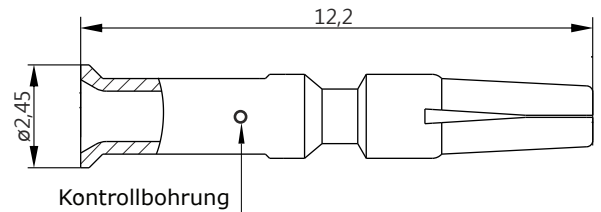
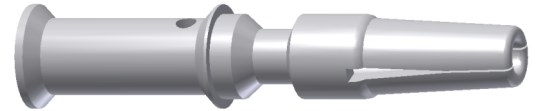
Anschlussart crimp
Anschlussbereich 0,05 - 0,75 mm² ¹⁾
0,10 - 0,75 mm² ²⁾
Abisolierlänge 5 mm
Crimpeinstellungen sind individuell zu wählen

Mechanische Werte

Steckzyklen 500

Werkzeuge (nicht im Lieferumfang enthalten)

digitale Crimpzange Best.-Nr.: C0.235.00 ¹⁾
analoge Crimpzange Best.-Nr.: C0.201.00 ²⁾
Positioniereinsatz Best.-Nr.: C0.258.00
Crimpen - kraftunterstützt
Crimpmaschine Best.-Nr.: WA10672
digitaler Crimpeinsatz, klein Best.-Nr.: C0.372.00 ¹⁾
digitaler Crimpeinsatz, mittel Best.-Nr.: C0.373.00 ²⁾



Hauptabmessungen

Kontaktbuchse





Contact Socket 1 mm

for: - 615/915 Insulation Insert

TE part number: 60-0265-011-000
IC reference number: 60.265.11

Electrical Data

rated current max 5 A*
contact resistance < 5 mOhm

Material

contact brass, gold plated

Termination

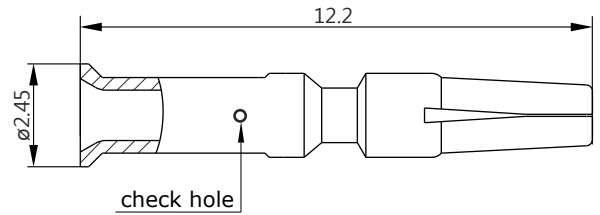
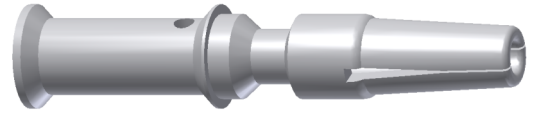
kind of termination crimp
cross section 0,05 - 0,75 mm² ¹⁾
0,10 - 0,75 mm² ²⁾
stripping length 5 mm
crimp settings select individually

Mechanical Data

mating cycles 500

Tools (not part of product contents)

digitale crimping tool order code: C0.235.00 ¹⁾
analog crimping tool order code: C0.201.00 ²⁾
positioner order code: C0.258.00
power crimping crimping machine order code: WA10672
digital crimp insert, small order code: C0.372.00 ¹⁾
digital crimp insert, medium order code: C0.373.00 ²⁾



Main Dimensions
contact socket



Mouser Electronics

Authorized Distributor

Click to View Pricing, Inventory, Delivery & Lifecycle Information:

[TE Connectivity:](#)

[60.265.11](#)