

Type LR Series

Key Features

IEC Color

Coding

Down to 1%

Tolerance

Down to

50PPM TCR

6 sizes

Suitable for

general

purpose or

precision

applications

Applications

Control

circuitry

Turbines

Drives



The resistive element comprises a thin film of nickel-chrome alloy evaporated onto a high thermal conductivity ceramic element. Metal end caps are force fitted to the element prior to spiralling to value. Tinned copper lead wires are welded to the end caps and the components are then coated. One coat of phenolic resin is followed by three coats of epoxy resin. All resistors are tested for value and tolerance.

Characteristics – Electrical

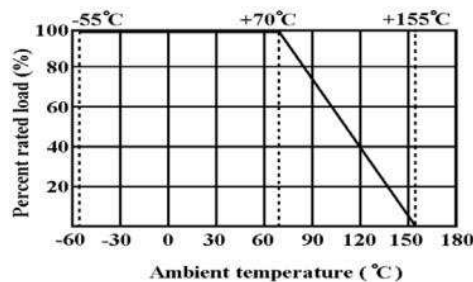
Type	LR0204	LR1L	LR1	LR2	LR100	LR200
Rated Power @ 70°C (W)	0.25	0.5	0.6	0.75	1	2
Resistance Range (Ω)	10 ~ 1M	0.1 ~ 0.82	1 ~ 10M	10 ~ 1M	51.1 ~ 1M	51.1 ~ 1M
Resistance Tolerance (%)	±1%	±5%	±1%	±1%	±1%	±1%
Max. Working Voltage	200	250	250	350	500	500
Max. Overload Voltage	400	500	500	700	1000	1000
Dielectric Withstand Voltage	400	250	500	700	1000	1000
Operating Temp. Range	-55 ~ 155°C					
Voltage Rating	Max. Working Voltage or V_P / R whichever is lesser					
	Max. Overload Voltage or $2.5 V_P / R$ whichever is lesser					

Environmental Characteristics

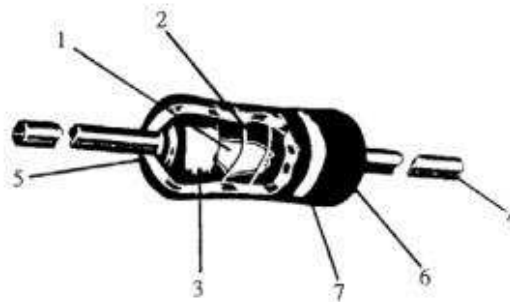
Characteristics	Limits		Test Methods (JIS C 5201-1)
DC. Resistance	Must be within the specified tolerance		5.1 The limit of error of measuring apparatus shall not exceed allowable range or 5% of resistance tolerance
Temperature coefficient			5.2 Natural resistance change per temp. degree centigrade
	Resistance Value (Ω)	T.C.R (PPM/ $^{\circ}$ C)	$\frac{R^2 - R^1}{R^1(t^2 - t^1)} * 10^6 \quad (\text{PPM}/^{\circ}\text{C})$
	1 ~ 9.1	± 100	
	10 ~ 1M	± 50	
	1.1M ~ 10M	± 100	
			R1: Resistance value at room temperature (t_1) R2: Resistance value at room temp. plus 100 $^{\circ}$ C (t_2)
Short time overload	Resistance change rate is \pm (0.5% + 0.05 Ω) Max. with no evidence of mechanical damage		5.5 Permanent resistance change after the application of a potential of 2.5 times RCWV for 5 seconds
Dielectric withstanding voltage	No evidence of flashover mechanical damage, arcing or insulation break down		5.7 Resistors shall be clamped in the trough of a 90 $^{\circ}$ metallic V-block and shall be tested at AC potential respectively specified in the table 1. for 60 + 10/ -0 seconds
Pulse overload	Resistance change rate is \pm (1% + 0.05 Ω) Max. with no evidence of mechanical damage		5.8 Resistance change after 10,000 cycles (1 sec. "on", 25 secs. "off") at 4 times RCWV
Terminal strength	No evidence of mechanical damage		6.1 Direct load : Resistance to a 2.5 kgs direct load for 10 secs. in the direction of the longitudinal axis of the terminal leads Twist test : Terminal leads shall be bent through 90 $^{\circ}$ at a point of about 6mm from the body of the resistor and shall be rotated through 360 $^{\circ}$ about the original axis of the bent terminal in alternating direction for a total of 3 rotations

Characteristics	Limits	Test Methods (JIS C 5201-1)		
Resistance to soldering heat	Resistance change rate is $\pm (1\% + 0.05\Omega)$ Max. with no evidence of mechanical damage	6.4 Permanent resistance change when leads immersed to 3.2 to 4.8 mm from the body in $350^{\circ}\text{C} \pm 10^{\circ}\text{C}$ solder for 3 ± 0.5 seconds		
Solderability	95 % coverage Min.	6.5 The area covered with a new, smooth, clean, shiny and continuous surface free from concentrated pinholes. Test temp. of solder: $245^{\circ}\text{C} \pm 3^{\circ}\text{C}$ Dwell time in solder : $2 \sim 3$ seconds		
Resistance to solvent	No deterioration of protective coatings and markings	6.9 Specimens shall be immersed in bath of trichroethane completely for 3 mins. with ultrasonic		
Temperature cycling	Resistance change rate is $\pm (1\% + 0.05\Omega)$ Max. with no evidence of mechanical damage	7.4 Resistance change after continuous 5 cycles for duty shown below:		
		Step	Temperature	Time
		1	$-55^{\circ}\text{C} \pm 3^{\circ}\text{C}$	30 mins
		2	Room temp.	10~15 mins
		3	$+155^{\circ}\text{C} \pm 2^{\circ}\text{C}$	30 mins
		4	Room temp.	10~15 mins
Load life in humidity			7.9 Resistance change after 1,000 hours (1.5 hours "on", 0.5 hour "off") at RCWV in a humidity test chamber controlled at $40^{\circ}\text{C} \pm 2^{\circ}\text{C}$ and 90 to 95 % relative humidity	
	Resistance Value	$\Delta R/R$		
	Normal type	$\pm 1.5\%$		
Load life			7.10 Permanent resistance change after 1,000 hours operating at RCWV with duty cycle of (1.5 hours "on", 0.5 hour "off") at $70^{\circ}\text{C} \pm 2^{\circ}\text{C}$ ambient	
	Resistance Value	$\Delta R/R$		
	Normal type	$\pm 1.5\%$		

Derating

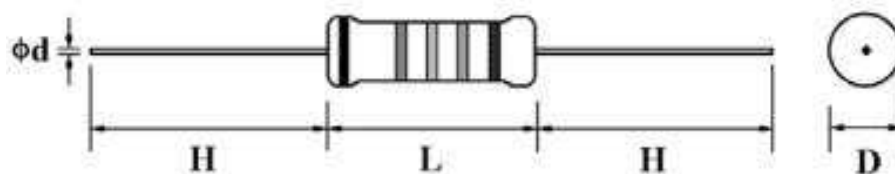


Construction



No.	Name		Material	
1	Basic Body		Rod Type Ceramics	
2	Resistance Film	LR1	Resistance Range	Material
			1Ω ~ 2.4Ω	Carbon Film
			2.41Ω ~ 10MΩ	Metal Film
		All Others	Metal Film	
3	End Cap		Steel (Tin plated iron surface)	
4	Lead Wire		Annealed copper wire coated with tin	
5	Joint		By Welding	
6	Coating		Insulated epoxy resin (Color : Sky blue)	
7	Color Code		Epoxy Resin	

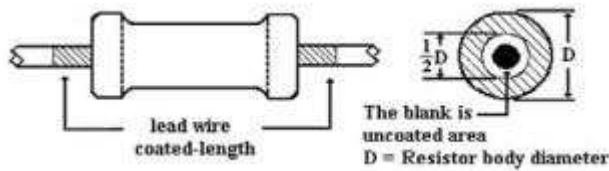
Dimensions



Type	Power Rating (W)	D (Max) (mm)	L (Max) (mm)	d ±0.05 (mm)	H ±3.0 (mm)
LR0204	0.25	2.0	3.4	0.45	28
LR1L	0.5	2.5	6.8	0.54	28
LR1	0.6	2.5	6.8	0.54	28
LR2	0.75	3.5	10	0.54	28
LR100	1.0	5.0	12.0	0.70	25
LR200	2.0	5.5	16.0	0.70	28

Outer Coating

Welding point, terminal and lead wire, is permissible to be exposed without the outer coated cover. The extent should be within 1/2 of the body Diameter.



Marking

Resistors shall be marked with color coding in accordance with JIS C 0802

LR1L Type

LR1L Type (4 Band)

	First Digit	Second Digit	Multiplier	Tolerance
Black	Nil	0	1	Nil
Brown	1	1	10	±1%
Red	2	2	100	±2%
Orange	3	3	1000	±3%
Yellow	4	4	10000	±4%
Green	5	5	100000	±0.5%
Blue	6	6	1M	±0.25%
Violet	7	7	10M	±0.10%
Grey	8	8	100M	±0.05%
White	9	9	1G	Nil
Gold	Nil	Nil	±10	±5%
Silver	Nil	Nil	±100	±10%

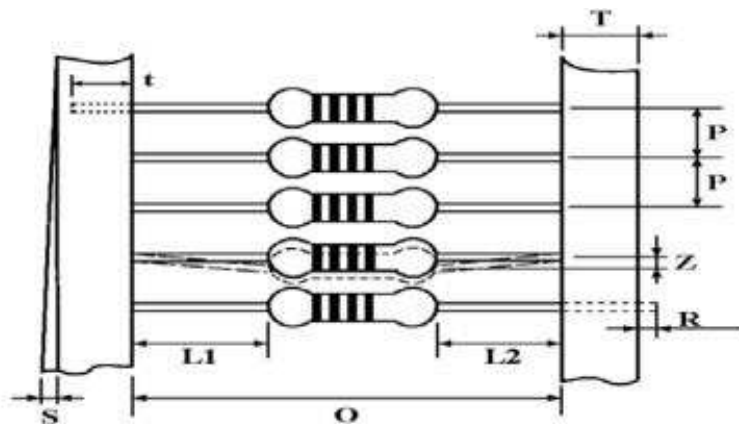
Other Types

Other Types (5 Band)

	First Digit	Second Digit	Third Digit	Multiplier	Tolerance
Black	Nil	0	0	1	Nil
Brown	1	1	1	10	±1%
Red	2	2	2	100	±2%
Orange	3	3	3	1000	±3%
Yellow	4	4	4	10000	±4%
Green	5	5	5	100000	±0.5%
Blue	6	6	6	1M	±0.25%
Violet	7	7	7	10M	±0.10%
Grey	8	8	8	100M	±0.05%
White	9	9	9	1G	Nil
Gold	Nil	Nil	Nil	±10	±5%
Silver	Nil	Nil	Nil	±100	±10%

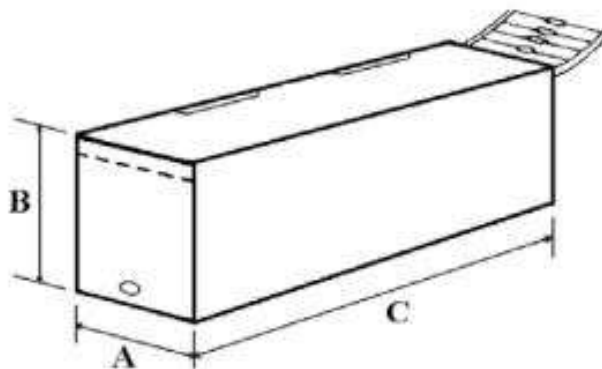
Packaging

Taping dimensions



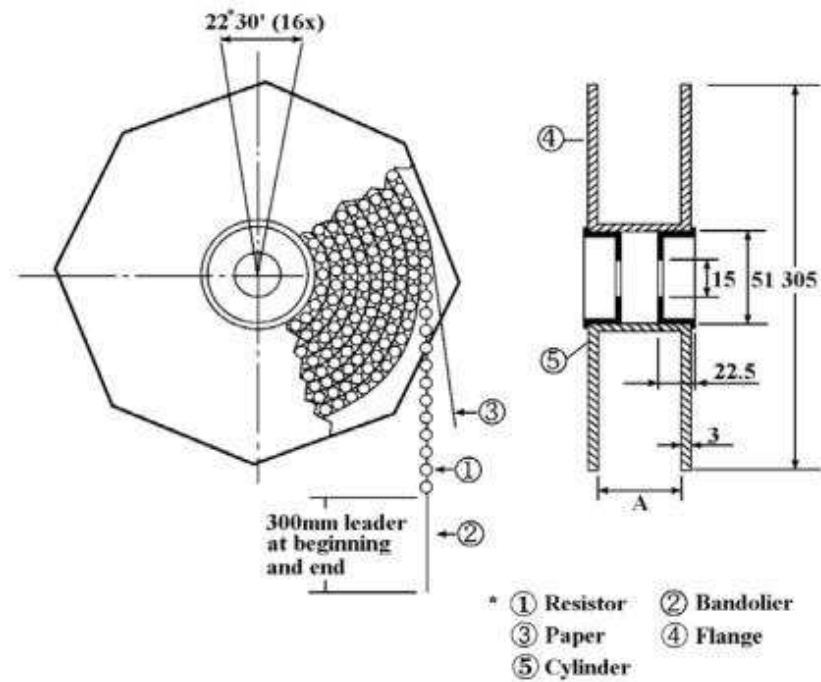
Type	Style	O	P	L1-L2	T	Z	R	T	S
LR0204	PT-52	52 ± 1	5 ± 0.3	1 Max.	6 ± 1	1 Max.	0	4 ± 1	0.5 Max.
LR1L	PT-52	52 ± 1	5 ± 0.3	1 Max.	6 ± 1	1 Max.	0	4 ± 1	0.5 Max.
LR1	PT-52	52 ± 1	5 ± 0.3	1 Max.	6 ± 1	1 Max.	0	4 ± 1	0.5 Max.
LR2	PT-52	52 ± 1	5 ± 0.3	1 Max.	6 ± 1	1 Max.	0	4 ± 1	0.5 Max.

Tape in Box Packing



Type	Style	L (C) ± 5	W (A) ± 5	H (B) ± 5	Quantity per box (pcs)
LR0204	PT52	250	75	66	5000
LR1L	PT52	250	75	96	5000
LR1	PT52	250	75	96	5000
LR2	PT52	255	75	43	1000

Tape on Reel Packing



Type	Style	Across Flange (A) (mm)	Quantity Per Reel (Pcs)
LR0204	PT-52	73 ±2	5000
LR1L	PT-52	73 ±2	5000
LR1	PT-52	73 ±2	5000
LR2	PT-52	73 ±2	2000

Environment Related Substance

This product complies to EU RoHS directive, EU PAHs directive, EU PFOS directive and Halogen free.

Ozone layer depleting substances.

Ozone depleting substances are not used in our manufacturing process of this product.

This product is not manufactured using Chloro fluorocarbons (CFCs), Hydrochlorofluorocarbons (HCFCs), Hydrobromofluorocarbons (HBFCs) or other ozone depleting substances in any phase of the manufacturing process.

Storage Condition (MSL1)

The performance of these products, including the solderability, is guaranteed for a year from the date of arrival at your company, provided that they remain packed as they were when delivered and stored at a temperature of 25°C ± 5°C and a relative humidity of 60%RH ± 10%RH

Even within the above guarantee periods, do not store these products in the following conditions. Otherwise, their electrical performance and/or solderability may be deteriorated, and the packaging materials (e.g. taping materials) may be deformed or deteriorated, resulting in mounting failures.

- 1. In salty air or in air with a high concentration of corrosive gas, such as Cl2, H2S, NH3, SO2, or NO2
- 2. In direct sunlight

How To Order

LR	1	F	22K	
Common Part	Type	Tolerance	Value	Packing
LR – Metal Film Resistor	0204 – 0.25W 1L – 0.5W 1 – 0.6W 2 – 0.75W 100 – 1W 200 – 2W	F – 1%	100R - 100Ω 1K0 - 1000Ω 100K – 100,000Ω (100KΩ)	Blank - Tape in Box TR – Taped and Reeled

While TE has made every reasonable effort to ensure the accuracy of the information in this data sheet, TE does not guarantee that it is error-free, nor does TE make any other representation, warranty or guarantee that the information is accurate, correct, reliable or current. TE reserves the right to make any adjustments to the information contained herein at any time without notice. TE expressly disclaims all implied warranties regarding the information contained herein, including, but not limited to, any implied warranties of merchantability or fitness for a particular purpose. The dimensions in this data sheet are for reference purposes only and are subject to change without notice. Specifications are subject to change without notice. Consult TE for the latest dimensions and design specifications

Mouser Electronics

Authorized Distributor

Click to View Pricing, Inventory, Delivery & Lifecycle Information:

[TE Connectivity:](#)

[LR0204F47R](#)