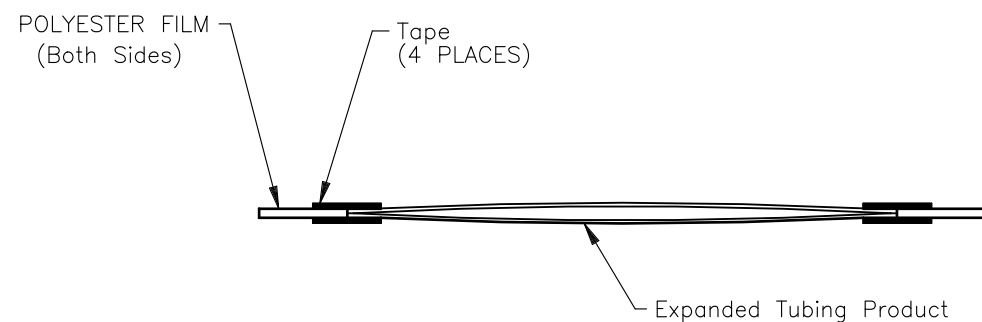
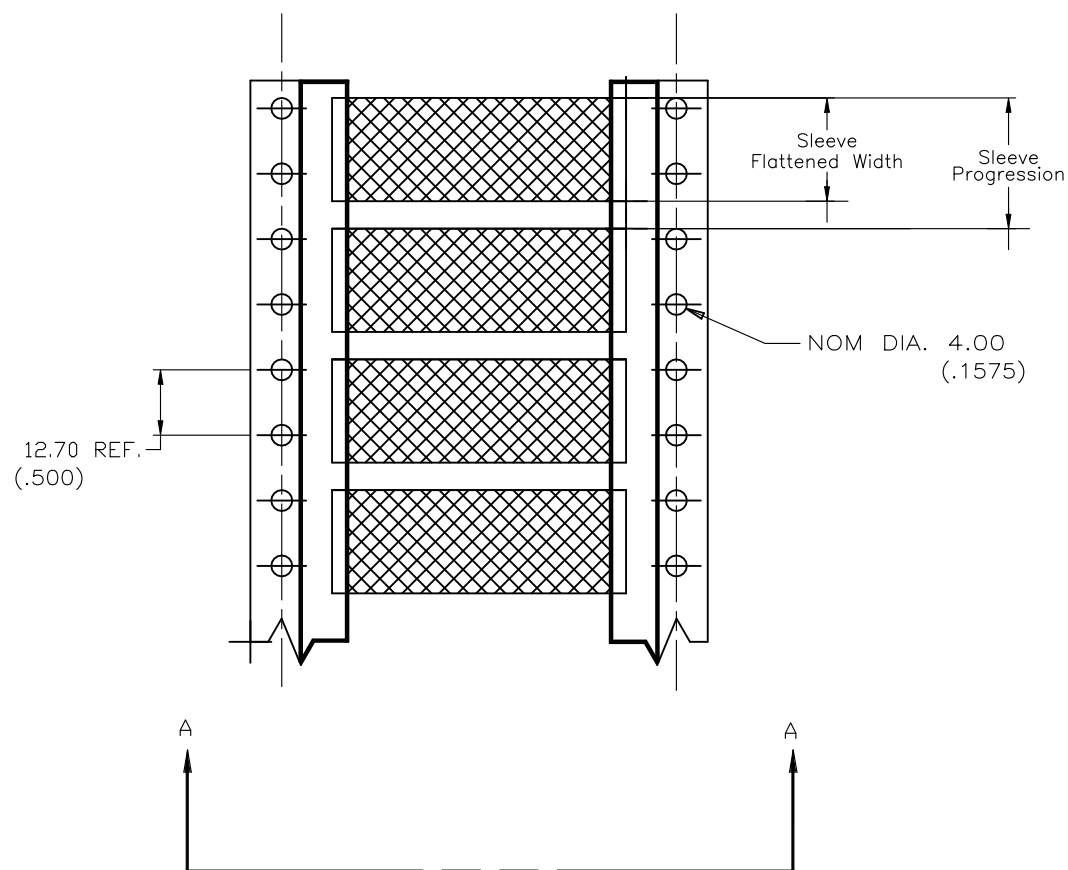
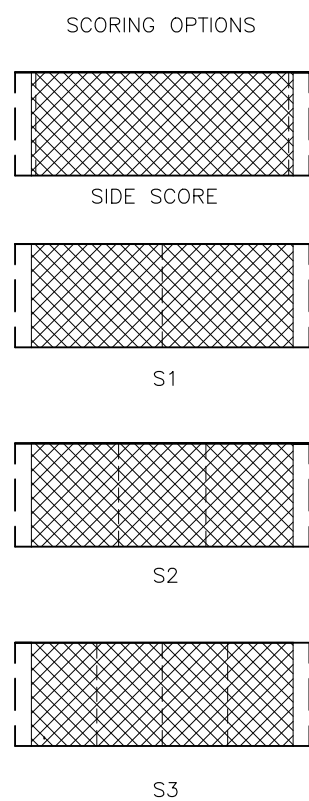
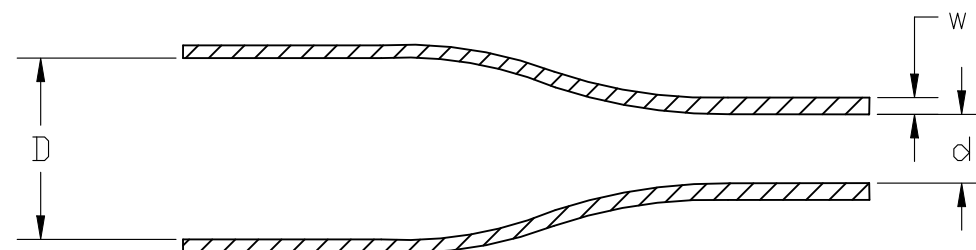


REVISIONS					
P	LTR	DESCRIPTION	DATE	DWN	APVD
	D1	REVISED PER ECR-24-216887	06AUG2024	GH	AK


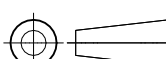


SECTION A - A

Product Size	3/32	1/8	3/16	1/4	3/8	1/2	3/4	1
Nominal Sleeve Flattened Width	4.32 (.170)	5.84 (.230)	8.00 (.315)	10.67 (.420)	15.49 (.610)	20.45 (.805)	30.78 (1.20)	40.39 (1.59)
Nominal Sleeve Progression	12.70 (.500)	12.70 (.500)	12.70 (.500)	16.94 (.667)	25.40 (1.00)	29.64 (1.17)	42.34 (1.67)	50.8 (2.00)
"D" Minimum Supplied I.D.	2.36 (.093)	3.18 (.125)	4.75 (.187)	6.35 (.250)	9.53 (.375)	12.70 (.500)	19.05 (.750)	25.4 (1.00)
"d" Maximum Recovered I.D.	1.17 (.046)	1.57 (.062)	2.36 (.093)	3.18 (.125)	4.75 (.187)	6.35 (.250)	9.53 (.375)	12.7 (.500)
"w" Recovered wall ±0.08 (±.003)	0.51 (.020)	0.51 (.020)	0.51 (.020)	0.64 (.025)	0.64 (.025)	0.64 (.025)	0.76 (.030)	0.89 (.035)



NOTE:
1. SIDE SCORE ALSO AVAILABLE WITH S1, S2, & S3

THIS DRAWING IS A CONTROLLED DOCUMENT.		DWN AFK08NOV2013		<div>TE Connectivity</div>							
DIMENSIONS: mm		TOLERANCES UNLESS OTHERWISE SPECIFIED:		NAME							
		CHK —		TMS—SCE—2X — —							
		APVD —									
		PRODUCT SPEC —									
		APPLICATION SPEC —									
MATERIAL CROSSLINKED POLYOLEFIN		FINISH —		SIZE A3		CAGE CODE 06090		DRAWING NO C=MCD160008		RESTRICTED TO —	
CUSTOMER DRAWING						SCALE 1:1		SHEET 1 OF 1		REV D1	

Mouser Electronics

Authorized Distributor

Click to View Pricing, Inventory, Delivery & Lifecycle Information:

[TE Connectivity:](#)

[9-1191845-6](#)